



**PROGRESSIVE POLICIES.**  
THREE strong and distinct aims stand out as objects in the operation of the First National Bank.

- 1—Build Up the Community.
- 2—Develop Farming and Business.
- 3—Promote the Practice of Thrift.

Now YOUR "Nationalized" bank account assists us in making those aims become accomplishments.

**DIRECTORS:**  
JOHN MORGAN, C. J. EDWARDS,  
A. W. BUNN, R. C. LAMB,  
HENRY ROGERS, W. J. KIECHERS,  
C. A. MCGHER

**The First National Bank**  
TILLAMOOK, OREGON

**Dr. E. L. Glaisyer,**  
**VETERINARIAN,**  
County Dairy Herd Inspector

BELL PHONE, MAIN 3. MUTUAL PHONE

**ALEX. McNAIR & CO.**

**GENERAL HARDWARE**  
Kitchen Ranges and  
Heating Stoves.

THE BEST STOCK OF HARDWARE IN  
THE COUNTY.

See Us for Prices Before Ordering Elsewhere.

**LAMB-SCHRADER CO.**  
WHOLESALE AND RETAIL

**CEMENT LIME, PLASTER, LATH AND  
BRICK; DOMESTIC STEAM AND  
SMITHING COAL.**

WAREHOUSE AND OFFICE—  
COR. FRONT AND 3RD AVE. WEST, TILLAMOOK, OR.

**NOTICE.**

Have sold my interest in the Tillamook Transfer Co. and have bought into the City Transfer Co., and all of the old customers who wish me to do their work will find me on the Job.

Prices Right.

\*\*\*

**H. BROOKS.**

**City Vulcanizing and Tire Shop.**  
Expert Tire Service.  
Vulcanizing and Retreading.

All Work Guaranteed.  
Let Me Keep You Out of Trouble. I carry a Stock of Goodrich Tires, Tubes and Tire Accessories.  
Your Patronage Solicited.

J. C. HOLDEN, 2nd STREET, OPPOSITE O.P., TILLAMOOK.

**DR. J. E. SHEARER**  
DR. A. C. CRANK.

DRs. Shearer & Crank  
Medical & Surgery.  
National Building.  
Tillamook - - - Oregon.

**Political Band Wagon.**

**Announcement.**  
I hereby announce myself as a candidate for the Republican nomination for representative in the legislature from the 14th Legislative District embracing Yamhill and Tillamook Counties.

Frank A. Rowe.

**Announcement.**  
I hereby announce myself as a candidate for County Judge at the next primary election. My motto, "100 per cent efficiency for every taxpayer's dollar."

W. L. Campbell.

To The Voters of Tillamook County.

I hereby announce myself as a candidate for County Clerk, on the Republican ticket, subject to the approval of the voters at the primaries next May.

H. S. Brinahl.

**Announcement.**  
I hereby announce myself a candidate for the office of County Treasurer of Tillamook County, on the Republican ticket.

Alexandria Rock.

**Announcement.**  
I hereby announce myself as a candidate for the office of County Treasurer of Tillamook County, for reelection, on the Republican ticket.

Kathleen Mills.

To The Voters of Tillamook County.

I hereby announce myself a candidate for the office of County School Superintendent of Tillamook County, subject to the approval of the voters at the coming primary election.

G. B. Lamb.

**Announcement.**  
Upon the advice of a large number of leading citizens of Tillamook County, I have decided to announce myself as a candidate for the office of County Clerk, subject to the approval of the Republican voters at the primaries to be held in May.

If nominated and elected I will perform the duties of said office to the best of my ability, and will devote my exclusive time in looking after the interests of said office and the taxpayers of Tillamook County affected thereby.

Dated this 14th day of January, 1920.

J. C. McClure.

To The Republican Voters of Tillamook County.

I am a candidate for sheriff in the Republican Primaries.

I am a deputy in this office at present, have had several years experience there, and I submit my record as an officer for your consideration.

Should I be nominated and elected, I will endeavor to serve you efficiently, honestly and impartially.

John Aschin.

To The Voters of Tillamook County.

I want the Republican nomination for sheriff at the primary election next May. To get it I have to have enough Republican votes. All who have faith in me, and vote for me, I thank in advance.

Frank Hannenkrat.

**Announcement.**  
Owing to the fact that a large number of tax payers in different parts of the county have asked me to make the race for County Judge, and believing that with my previous experience in County business, I am qualified for the office, I hereby announce myself as a candidate for the office of County Judge, subject to the approval of the Republican voters at the coming Primary Election.

Homer Mason.

**Announcement.**  
I am a candidate for re-election on the Republican ticket, at the primary election, May 21, for the office of County Assessor.

Economy, efficiency, and a business system in handling the work of the office, combined with careful courteous treatment to all, has been my policy in the past, and will be my policy in the future.

C. A. Johnson.

Secretary Daniels says that one reason we went into the war was to vindicate the rights of small people to self government, and inquires: "Shall America alone fall before America pledges her blood and treasure to sustain the theory that every kindred, tribe and tongue should have a nation all its own, of which the United States Government itself is a standing denial, Josephus might ask our ally Great Britain to try it on the dog in Ireland and Egypt."

The Cincinnati Enquirer objects to the number of investigations the present congress has authorized, and in view of the disclosures as to the way in which a Democratic national administration conducts public business, you can't blame the Enquirer as a Democratic organ, for objecting at all.

# Jerseys for Sale.

Place a purebred Jersey Sire at the head of your Herd!

By doing so you increase the quality and quantity of TILLAMOOK CHEESE.



Katy of Shady Lawn Farm. No. 330122. Age 4 years.



Hermit's Pussy Fancy.

This is a chance for the dairymen of Tillamook County to head their herds with a pure bred Jersey sire. My cows will start to freshen Feb. 29, 1920. I am offering for sale only Male Calves from my pure bred Jerseys. The dams of some of these calves have an official record as follows:

Katy of Shady Lawn Farm—No. 330123, age 2 years, 3 months, 397.67 lbs. fat.  
Orinda's Blossom—No. 329164, age 3 years, 473.44 lbs. fat.

Have others on test that will complete their year in May, 1920, they will make some excellent records. These cows are bred to Golden St. Maves Rosalie No. 161026 who won the blue ribbon at the Pacific International. His dam is Golden St. Maves Waltz Rosalie No. 299384 who has a record of 559.30 lbs. fat, being milked only twice daily. If milked three times daily she is capable of making seven or eight hundred lbs. fat. His grand dam, St. Maves Poppy No. 219992 on his sire's side has a record of 952 lb. fat. He is one of our great herd bulls, his daughters in the Junior Calf Class won 1st and 2nd at the Tillamook County Fair and "third" in a class of twenty junior calves at the Pacific International. We often hear dairymen say they would like to see the result of a purebred sire in my herd. I started using him in 1912. His first daughter freshened in 1915. Will give the figures of each month's cheese factory test for 1914 and total amount of fat per year before any of the pure bred sire's daughters were in milk and the same for 1919:

1914—No. of cows 56.	
Month	Test
January	3.5
February	3.5-3.8
March	3.5
April	3.5-3.6
May	3.5-3.4
June	3.6-3.7
July	3.7-3.6
August	3.7-3.8
September	4.0-4.1
October	4.1-4.2
November	4.5

December	4.7
Total lbs. milk	277,610
Total lbs. fat	10,392.77
1919—No. of cows 57	
Mo.	Test
January	4.5
February	4.4-4.3
March	4.2-4
April	4.0-4.0
May	4.2-4.3
June	4.3-4.3
July	4.4-4.4
August	4.5-4.5
September	4.5-4.6
October	4.7-4.9
November	5.1-5.3
December	5.5-5.3
Total lbs. milk	332,021
Total lbs. fat	14,933.97

This shows an increase of 4,541.20 lbs. fat valued at approximately 82 cents average price for 1919 or \$3,723.78. Compare the two different years and I am sure the figures will convince you that it does pay to have a pure bred sire at the head of your herd. One can readily see that the pure bred sire increased the fat and milk production and also increased the quality of our Tillamook cheese. It doesn't require any more effort to produce a high grade milk than it does a low grade milk and these figures which show you that it increases your bank account wonderfully. I am offering heifer calves for sale from my grade cows. Some of these cows have made a record of nearly 600 lbs. fat and several above 400 and a very few below 300. They are bred to my herd bulls Golden St Maves Rosalie and Riolar of Rock Ridge. We have been breeding dairy stock for over fifty years and you are sure to get the best if you select from this herd, the herd that has always, until this year, produced the largest cheese check in the county for any one month and this year the herd was divided into two farms; some of the largest checks for the two were \$2700 (twenty seven hundred).

Every cow is on test; come and look the herd over and get first choice.

**DON MEADOWS JERSEY FARM Since 1867.**  
**JOE DONALDSON, Prop., Tillamook, Ore.**

## Are You Insured?

**IF NOT THE WOODMEN OF THE WORLD.**

**Giant of the West With a Reserve Fund of \$8,356,000 offers secure Benefits as follows:**

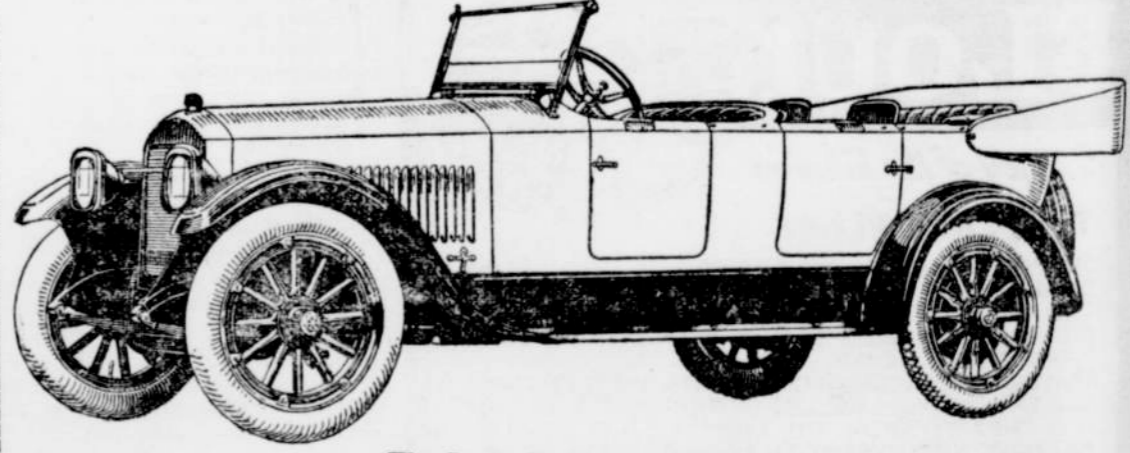
Ages	\$500	\$1000	\$2000	\$3000
18 to 22	35	70	1.35	2.05
23 to 25	40	75	1.45	2.20
26 to 29	40	80	1.60	2.30
30 to 31	45	85	1.70	2.55
32 to 33	45	90	1.80	2.70
34 to 35	50	95	1.90	2.85
36 to 37	50	1.00	2.05	3.05
37 to 38	55	1.05	2.15	3.20
38 to 39	60	1.15	2.25	3.40
40 to 41	60	1.20	2.35	3.55
42 to 43	65	1.25	2.50	3.70
43 to 44	65	1.30	2.60	3.90
44 to 45	70	1.35	2.70	4.05
45 to 46	70	1.40	2.80	4.20
47 to 48	75	1.45	2.95	4.40
48 to 49	75	1.50	3.05	4.55
49 to 50	80	1.60	3.15	4.75
50 to 55	85	1.65	3.25	4.90

Multiply above rates by 12 and you have the cost for one year.  
To the foregoing add 50 cents per month for camp dues which gives you all the privileges and benefits of a fraternal organization.  
These rates are far lower than for "Old Line" insurance. This order has been in existence nearly 30 years and every claim is promptly paid.  
Join now and help boost the District Convention which will be held in Tillamook the third week of May.

**Admission Fee, \$5.00**  
For a Short Time Only.

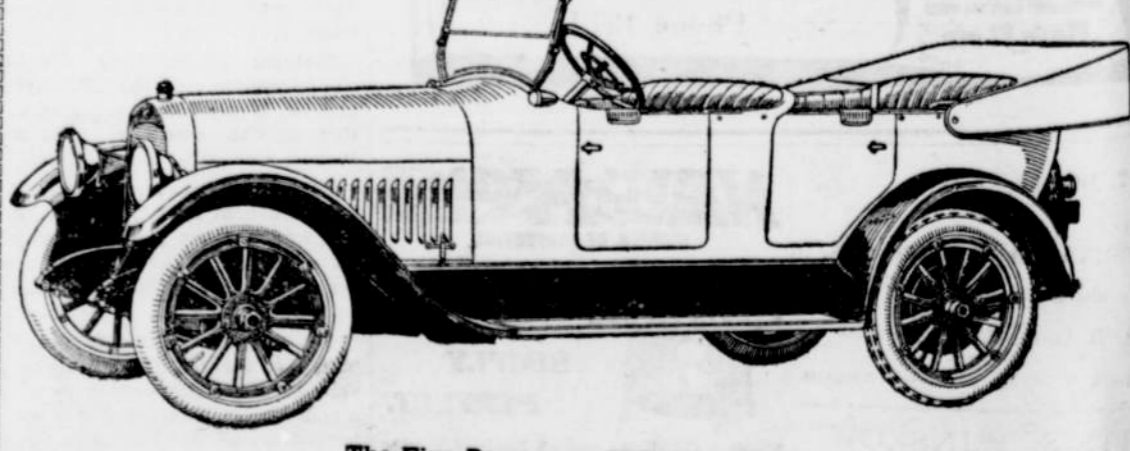
For further information and application card apply to either F. H. Matthews, C. C. or Thomas Coates, Clerk Alder Camp No. 219 Tillamook

## The Seven-Passenger BIG-SIX



**The Seven-Passenger BIG-SIX.**  
A car of 126-inch wheelbase, with 60-horsepower Studebaker-designed and Studebaker-built demountable-head motor with two-range carburetor, shock absorbers, artistic straight side slanting windshield with ventilator base and integral corner lights, jeweled eight-day clock, tonneau lights with extension cord, Gypsy top with rectangular plate-glass window in rear, 33 x 4 1/2 inch cord tires, weight 3,125 pounds.

## The Five-Passenger SPECIAL-SIX



**The Five-Passenger SPECIAL-SIX.**  
A car 119-inch wheelbase, with 50-horsepower Studebaker-designed and Studebaker-built demountable-head motor; improved carburetor with "hot-spot" intake manifold; cowl lights at corners of windshield; outside and inside door handles; tonneau light with extension cords; 32 x 4 inch cord tires.

PRICES ON APPLICATION.  
**See GEO. WILLIAMS, Dealer.**

Oregon.  
The camp meets every Thursday night in W. O. W. Hall, National Building. Visiting neighbors always welcome.

The Philadelphia Review wants to know what's the matter with William G. McAdoo for President. The paper scarcely prevents telling it all.

Why is it that in spite of the apparent balance of trade in favor of the United States in our transactions with Europe, the exportation of goods from the United States to Europe shows a heavy increase?