

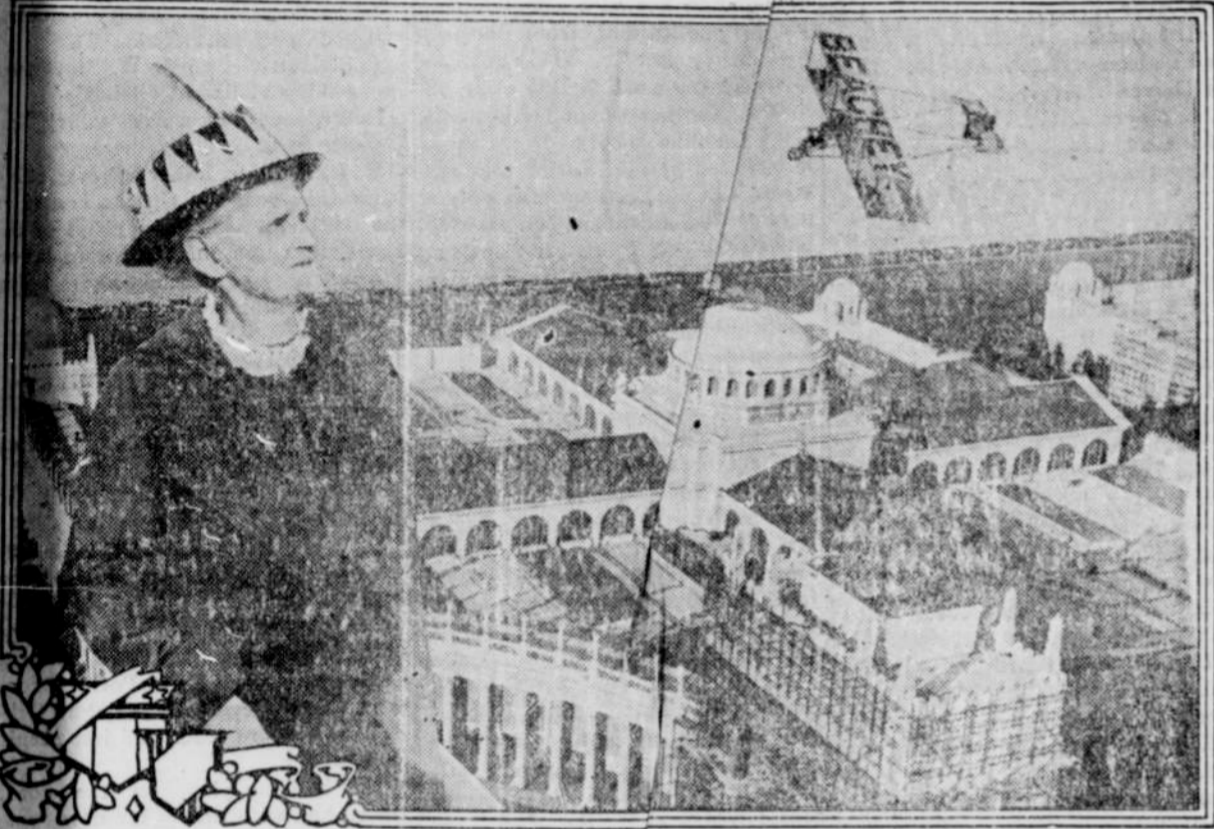
Wonderful Exhibits From All Lads Show the World's Best Progress

From Beginning to End Magnificent Panama-Pacific International Exposition Will Abound With Superb Educational and Entertainment Features.

By HAMILTON WRIGHT.
THE construction of the vast Panama-Pacific International Exposition at San Francisco was 95 per cent completed three months before the opening day, on Feb. 20, 1915. The early installation of thousands of tons of rare and costly exhibits from all parts of the globe and the participation of forty of the world's great countries have assured a celebration that will be unrivaled in its splendor, magnitude, interest and comprehensiveness.

Francisco in a single day, and, far in advance of its opening, the Exposition had created an unprecedented interest throughout the world, and its opening was eagerly awaited.

The work will, for example, see in the Palace of Mines an exhibit three-quarters of an acre in extent, illustrating the manner in which the largest steel corporation in the world is carrying out and plans to still further advance the welfare of its employees. In the Palace of Education exhibits portraying the results of the world's best efforts in recent years. The wonderful Exposition, presented at an outlay of more than \$90,000,000, celebrates a contemporaneous achievement, the building of the Panama canal, and all exhibits that are entered for competitive award will be those that have been originated or devised since the great Louisiana Purchase Exposition at St. Louis ten years ago. The possible exception to this rule will be where earlier exhibitors



Photograph courtesy San Francisco Examiner.
THE MOTHER OF LINCOLN BEACHEY, FROM THE TOWER OF JEWELS, 435 FEET ABOVE THE EARTH, AT THE PANAMA-PACIFIC INTERNATIONAL EXPOSITION, WATCHES HER SON LOOP HIS ONE THOUSANDTH LOOP.

When Lincoln Beachey, a son of San Francisco, on the occasion of his homecoming after breaking all world records as a daredevil looper of 999 loops, performed two entirely new and death-defying stunts over the completed palaces of the Panama-Pacific International Exposition it was his aged mother who for the first time waved him on to fresh achievements. Mrs. Beachey held a place of honor, 435 feet up in the air, on the tip-top of the wonderful Tower of Jewels. From this aerial she was able to watch every erratic move of her daredevil son. She cried out only once. That was when he wrote the figures "1000" against the clouds, high above the two miles of completed exhibit palaces, significant of the looping of his one thousandth loop.

ama canal is today open and doing business on a far vaster scale than was predicted for it, and the Exposition, which celebrates the opening of the canal, is today revealed as the greatest manifestation of national achievement in American history. Here will be a neutral ground where even nations engaged in warfare will display on a scale never before equaled their progress in the arts, industries and sciences of peace.

shown to illustrate the evolution of the processes of manufacture—as, for example, a display of a model of the first cotton gin in connection with the marvelous equipment into which it has evolved.

congress, at which its distinguished chairman, Colonel George W. Goethals, will preside.

The foreign participation will be notable. The nations are not attempting to show everything that they produce, but will lay especial emphasis upon those products in which they excel. In the Danish display, for example, will be shown products of the Royal Danish porcelain factory at Copenhagen. Japan in her exhaustive exhibit will display priceless works of art, loaned by direction of the imperial household and many of which could not be duplicated. From Italy will be shown historic paintings of the old masters, hitherto never exhibited in America in the originals. From China there have reached San Francisco selections of exhibits collected under the supervision of the governors of the Chinese provinces. Rare silks and satins, carvings, inlay work in the precious metals, exhibits of the transportation methods employed in the old China and the modern methods used in the awakening republic will be shown.

New Zealand will make a marvelous exhibit of its rare woods, of its fleeces, of its superb scenic charms. A large number of rare giant tree ferns from New Zealand will be found growing on the Exposition grounds.

The Argentine Republic early set aside a larger sum than any ever appropriated by a foreign nation for representation in an American exposition. The modern cities of Argentina, the schools, churches, libraries, the great live stock and agricultural interests will be extensively portrayed, and the mutual interests of South America and North America will be emphasized in almost every conceivable manner. From South Africa will be shown diamond exhibits and methods of extraction. The magnificent Canadian displays will review not only the widely known agricultural wealth, but will illustrate the scenic charms of the great Dominion, of snow clad mountain peaks, of far-reaching forest, of inland lakes in chains of silver and rushing mountain streams.



"THE END OF THE TRAIL," PANAMA-PACIFIC INTERNATIONAL EXPOSITION, SAN FRANCISCO, 1915.

This photograph shows James Earle Fraser's superb piece of statuary, "The End of the Trail," at the Panama-Pacific International Exposition. More than 800 beautiful sculptures are shown at the Exposition, the works of many sculptors of the day. In addition to the sculptures shown out of doors, thousands of beautiful works of art are presented in the great Palace Fine Arts.

UNDER-SEA RAIDERS HELD FOR MURDER.

ptured Crews will Get no Honors. London, March 8.—The Admiralty announces that it is not justified in awarding honors to the captured crews of German submarine boats, taken by their methods, and that it is ordered to segregate them under strict restrictions, pending their conviction, pending their conviction, pending their conviction.

the crews of German submarines is in answer to the demand of Admiral Lord Charles Beresford, retired, and others, that such men be tried for murder, and the Admiralty statement indicates that the Government has this in mind.

probability that she has been guilty of attacking and sinking unarmed merchantmen and firing torpedoes at ships carrying non-combatants, men, women and children. In particular, the steamer Oriole is missing, and there is grave reason to fear that she has been sunk with her crew of 20.

praise. Meantime persons against whom such charges are pending must be subject to a special restriction and cannot be accorded the distinction of their rank or be allowed to mingle with other prisoners of war."

Firemen Hold Meeting.

Pursuant to a call of Fire Chief Coates, the members of the Tillamook Hose Co. met in special session on Wednesday, March 3rd, 1915, at the City Hall, but the City Council being also in special session the meeting was adjourned until Friday, March 5th.

The meeting being open for discussion suggestions were made by Mr. Dwight, O'Donnell and others to the effect that the matter of keeping a good live fire company was incumbent upon the property holders of the city and also upon the Insurance Companies represented here.

Poultry Men Organize.

February 27 a few of the poultry men of Tillamook County met in the Commercial Club rooms. Professor A. G. Lunn, Instructor of Poultry Husbandry at the O. A. C. was present and gave a very interesting lecture, illustrated with stereopticon slides; his subject being "Poultry Work at O. A. C."

Fairview Literary Society.

The next regular meeting of the Fairview Literary Society will be held Saturday evening March 20, 1915. The following program will be given:

STRENGTHEN YOUR KIDNEYS

This Treatment is Guaranteed by the
CHARLES I. CLOUGH CO.

If the kidneys are sluggish in their action, general ill health usually results. Skin affections arise, due to the extra work thrown upon the skin in removing poisons which should be excreted by the kidneys; heart affections, caused by the pressure of fluids dammed back by the sluggish kidneys; eye diseases, nervousness, chronic headaches and other ailments.

These are often done in great measure to the poisonous action of matter left in the body.

We want you to try Rexall Kidney Treatment if your kidneys are out of order. We feel the utmost confidence in this treatment, which is especially designed to strengthen the kidneys, restore their normal functions and help in rebuilding the general health.

C. I. Clough Co.
 Reliable Druggist
 Wier Sprechen Deutsch.

Two World Expositions Now Open.

Reduced fare round trip tickets, permitting stop-overs at all points in either direction, to the Panama Pacific International Exposition, San Francisco, and to the Panama-California Exposition, San Diego, on sale every day to November 30th.

Via the
Pacific Railway & Nav. Co.

Three Fine Trains from Portland Daily.
 Shasta Limited: San Francisco Express: California Express.

P.R. & N. Trains make direct connection at Portland.

Stop-overs on One Way Tickets

Ten days' stop-over will be allowed at San Francisco and Los Angeles on one way tickets sold to Eastern Cities when routed via the Southern Pacific.

"California and It's Two World Expositions."

A new booklet describing the trip from Portland to San Diego including the two Expositions, the scenic beauties of Oregon, the Siskiyou and Shasta Mountains, San Joaquin Valley and Yosemite National Park. Free on application to nearest Agent.

PACIFIC RAILWAY & NAV. CO.
 John M. Scott, General Passenger Agent, Portland, Ore.

TIGER ARN'T YOU TICKLED?

RESOLVED THAT WE NEVER SPRING ANYTHING ON OUR CUSTOMERS UNLESS WE KNOW IT IS RIGHT.

Grocery Specials This Week

Royal Club Solid Pack Tomatoes No. 3 can 2 for 25c.
 Royal Club Solid Pack Maine Corn 2 cans for 25c.
 Royal Club Summer Pack Pineapple 9 oz. can, 2 cans for 25c.
 Royal Club Early June Peas, 3 cans for 40c.

RAY & CO.
 GROCERIES, SMOKED MEATS, FRUITS, VEG ETABLES, HAY, GRAIN, FEED.
 TILLAMOOK, OREGON

Morgan, By Society.
 "The Farmers' Club." By Society.
 Song, By Society.
 Program committee, Miss Lorpabel, Miss Shrode and Mrs. Crawford.

Notice to Farmers.

The Tillamook Lime Products Co. is ready to furnish ground lime stone to the farmers. The lime stone is ground so as to pass a 1-6 inch wire screen. The lime stone will cost \$3.00 per ton in sacks at the plant. A charge of 1 cents per sack or 6c. per ton extra will be made for the sacks unless sacks are furnished by the customer. Only grain or meal sacks with a close weave should be brought as the fine dust or powder will all be lost if the sacks have a coarse weave leaving only the coarse grains of limestone in the sacks.

A set of new grinding rollers are being installed to increase the capacity and produce a finer product.

Address all communications to U. G. Jackson, Box 413, Tillamook.