

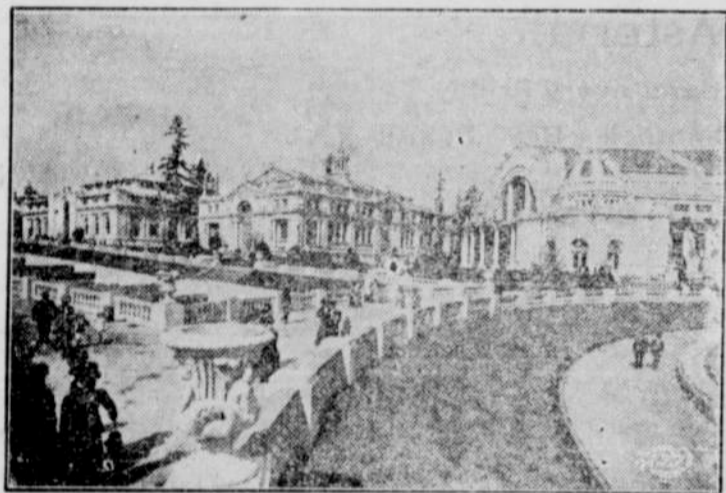
WHERE WORLD'S WORKS OF ART WILL BE HOUSED AT A.-Y.-P. EXPOSITION, SEATTLE.

In this building will be exhibited many priceless paintings. The display will represent the art galleries of the world, for many of these pictures will be the work of the old masters, including rare art exhibits from the Corcoran in Washington, the Art Museum in New York, the Chicago Art Institute and from a large number of private galleries of wealthy men in the United States and Europe, who have for years made the collection of famous old paintings their hobby. Paris and London have made large loans.

At the Alaska-Yukon Pacific Exposition the selection of pictures will be limited to the works of men who have been recognized in the great art competitions in all parts of the world. Many American artists will be represented in the display in the Fine Arts Palace at the Exposition and arrangements have already been made for the shipping of these valuable paintings from art institutes of this country to Seattle.

G. L. Berg, art director of the Exposition, has visited all of the leading galleries of the United States, collecting the pictures suitable for display at Seattle, and writes that the pictures already loaned will constitute one of the greatest art displays assembled for international exhibition.

The Fine Arts Building is a fireproof structure and was one of the first buildings completed on the Exposition Grounds. It cost more than \$200,000 to erect the building.



PANSIES AND POSIES EVERYWHERE AT A.-Y.-P. EXPOSITION.

In the foreground of the picture is shown the bank which slopes up from Geyser Basin at the Alaska-Yukon-Pacific Exposition, Seattle. Upon it have been planted 300,000 tufted pansy plants, and close up to the ballustrades high-growing plants of bright blossom.

Above Geyser Basin can be seen the banks of the Cascades, and around these are growing 100,000 rose bushes, so selected that there will be a rotation of blooms throughout the Exposition.

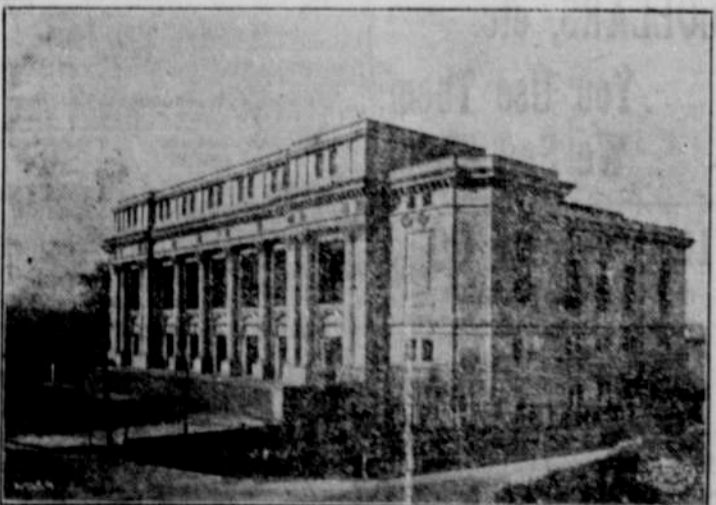


THE HAWAIIAN BUILDING, A.-Y.-P. EXPOSITION, SEATTLE.

The building erected at the Alaska-Yukon-Pacific Exposition for the exclusive use of the Hawaiian Islands, occupies a prominent position on the Court of Honor next the central government structure.

Hawaii has prepared a more extensive and comprehensive exhibit of its marvelous resources than for any other world's fair. It will show all of its native fruits and vegetables; will offer an aquarium of live fish, and in various other ways interest the fair visitors. Fruits will be served by native girls and native orchestras and singers will be always on hand. A tank in the center of the structure will show the islands they rest in the Pacific Ocean.

Upwards of \$100,000 has been expended in assembling Hawaii's display.



THE AUDITORIUM AT A.-Y.-P. EXPOSITION, SEATTLE.

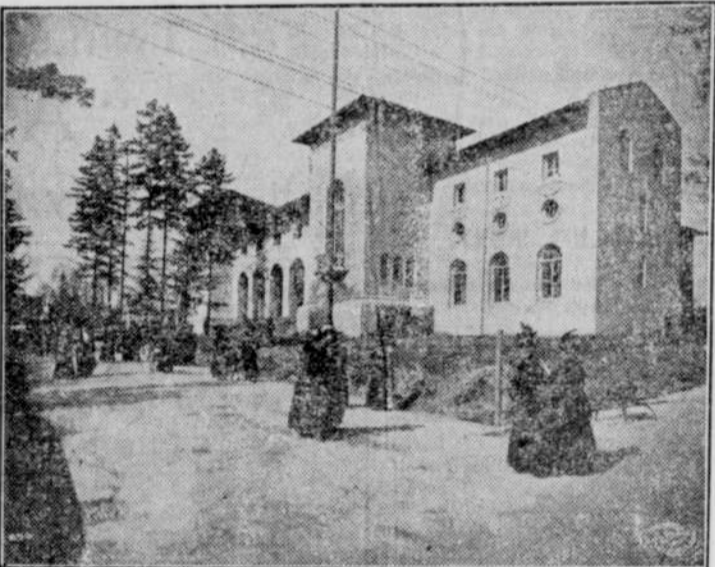
Probably the most striking structure on the grounds of the Alaska-Yukon-Pacific Exposition is the Auditorium. It is built of reinforced concrete, steel and brick and is a part of the rich legacy which is to be handed down to the State University when the Fair is over.

The Auditorium stands upon an eminence overlooking the main entrance to the Exposition Grounds. It is now in use as a lecture room by the University Law School and for all assemblies of students. It has a seating capacity of close to 3000, which can be greatly increased.



SCENE ON THE COURT OF HONOR, A.-Y.-P. EXPOSITION, SEATTLE.

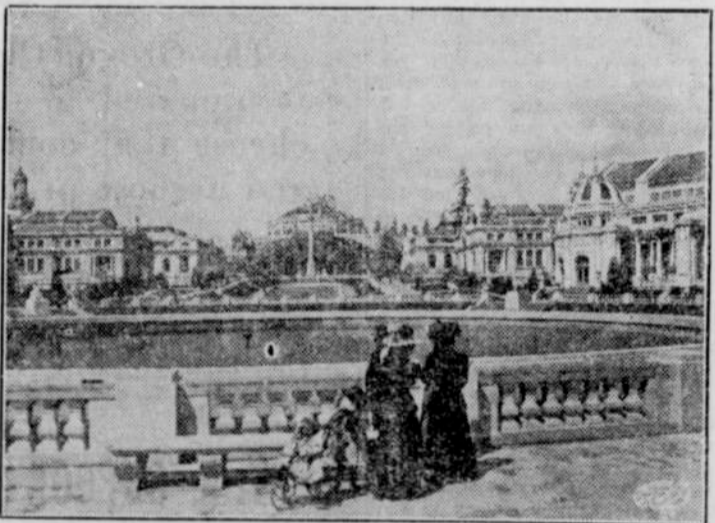
In constructing its group of five buildings, the United States Government had regard for the type of architecture followed generally in the buildings of the Exposition proper. The Exposition structures are in the modern French renaissance and the Government in the modern Spanish. The two styles tie in nicely together and make an harmonious whole. On the right of the picture is the Alaska building, one of the Government group. In the center is the European Exhibits Palace. On the left is a facade of the Palace of Agriculture. The last two named are in the French renaissance and were completed before December 1, 1908. The Alaska building was completed April 15.



THE CALIFORNIA BUILDING AT A.-Y.-P. EXPOSITION, SEATTLE.

California's handsome building is one of the very striking structures on the grounds of the Alaska-Yukon-Pacific Exposition. It is in the old Spanish Mission type of architecture encountered so frequently in Southern California, and the detail of its front has attracted the attention of artists and architects from all over the country.

In the building every county of the golden state will have an exhibit. California, from Siskiyou to San Diego, has shown as much enthusiasm for the Exposition as has Washington itself.



A VIEW OF THE COURT OF HONOR, A.-Y.-P. EXPOSITION, SEATTLE.

All of the principal buildings of the Alaska-Yukon-Pacific Exposition are grouped in close compass around the Cascades and Geyser Basin and the flower beds which line each.

The picture shows a view from the lower side of Geyser Basin, directly up the Court of Honor. On the right are seen the Palace of Manufactures, the Oriental and Hawaiian Buildings. On the left are the European Exhibits and Alaskan Buildings. In the far center is the Central Government, which shows its incomplete front as it looked on April 15. On that date this was the heaviest piece of construction to be finished before the opening day of the Exposition and the contractors estimated that it would take them ten days to do the work.

Geyser Basin is in the foreground, and just beyond it show the steps in the Cascades.



A SUNNY DAY ON YUKON AVENUE, A.-Y.-P. EXPOSITION, SEATTLE.

Yukon Avenue is one of the many ways leading to the Court of Honor of the Alaska-Yukon-Pacific Exposition. It leads from the Cascades down to one of the many entrances to the Pay Streak and directly to the "caf  center" of the Fair Grounds.

On the left of the picture a facade of the European Exhibits Building shows. On the right is a corner of the Palace of Agriculture. In the distance, and across the Cascades, is to be seen the Oriental Building.

All of these structures were completed before December 1, 1908. They are of the conventional exposition type of construction—plaster staff over heavy wooden framework.

Personal Interest.

"O, yes, I believe in temperance
And its advocates, grand and true,
Shall ever have my sympathy
In the work they are trying to do,
But with me, you see, its this way:
My children are all grown up you know,
And not one of my boys could be tempt-
ed
Inside a saloon to go.
They have no use for tobacco,
And as for a cigarette
There's nothing to them more disgusting,
So you see, I've no need to fret,
For my boys are all safe;
And the girls? O, they,
In truth, are too firmly grounded
To ever be let astray.
So, while I believe in temperance,
And its advocates grand and true,
Shall ever have my sympathy
In the work they are trying to do;
Real, personal interest I do not feel:
For, thanks to the training they've had,
My children are safe, and at last for me
There's nothing to go but be glad."
Ere a year passes by, with heart rend-
ing sobs
That glad song of triumph is hushed;
For home to that mother they carried
her boy,
Her firstborn—all mangled and crushed;
How came it? 'Twas drink, the curse of
our land;
And tho' his lips it never passed,
It cut him down in fair manhood's morn;
It murdered that boy at the last,
'Twas the tragical story, repeated so oft
Regarding it little we think—
A railway disaster, the fault of some one
Under influence of drink!
Time passes swiftly, but sadly away,
In that home where once was all joy;
And a fresh sorrow comes, harder still
to be borne
Than ever the death of her boy.
A beautiful daughter, light of the home,
Entrusts her sweet life unto one
Who promises well to be noble and true.

But, ere long, by the drink is
Another sad story, so common,
The details I hardly need tell
Of a soul in its struggle with
Surrounded by strong holds of
Of a soul at last conquered,
hood bereft
Of a heart broken wife loving still
Trying bravely to save a once
Ere a drunkard's grave he shall
O, parents, as long as this demon
Of drink is abroad in our land
Our children are not safe, and
and I
Unprepared for the battle ere
Let us put on the armor, and
in Him,
Who will be to us wisdom and
Let us ne'er lay it down until
the foe,
That threatens our home every
MAMIE ELLIOTT

Chamberlain's Cough Remedy
the Best on the Market
"I have used Chamberlain's
Remedy and find it to be the best
market," says E. W. Tardy,
The Sentinel, Gainsboro, Tenn.
baby had several colds the past
and Chamberlain's Cough Remedy
always gave it relief at once and
in a short time. I always recom-
mend when opportunity presents itself
sale by Lamar's Drug Store.

Sore Nipples
Any mother who had experienced
this distressing ailment will be glad
to know that cure may be effected
applying Chamberlain's Salve
the child is done nursing. Wrap
with a soft cloth before allow-
babe to nurse. Many trained nurses
this salve with best results. For sale
Lamar's Drug Store.

Could Not Be Better
No one has ever made a salve
ment, lotion or balm to compare
Bucklen's Arnica Salve. It is the
perfect healer of Cuts, Corns,
Bruises, Sores, Scalds, Blisters,
Eczema, Salt Rheum, For Sore
Cold Sores, Chapped Hands,
Infallible for Piles. Only 25c. at
Clough's.

Centrally Located. First Class
HOTEL RAMSEY,
Tillamook, Oregon.
The Only First Class Hotel in Tillamook,
A Modern Hotel. Traveling Men's Home. Tourists' Headquarters.
J. F. RAMSEY, Pro.

Pacific Navigation Co.
STEAMER SUE H. ELMORE,
The ONLY Freight and PASSENGER
Boat making regular trips between
TILLAMOOK AND PORTLAND.
FREIGHT, \$3.00 PER TON.
CHEESE, Tillamook to Portland:
Twins, 12½ Cents per C
Trips, 15 " "
F. P. BAUMGARTNER, Agent Couch Street Dock, Portland, Ore.
B. C. LAMB, Agent, Tillamook, Oregon.

PURITY
above everything distinguished
WEINHARD'S BEER
From the Common
Used on the family table it turns a dry lunch
into an enjoyable sustaining meal, makes home
cheerful, keep the men at home and offers
effective aid to real temperance.
Orders should be Sent to the
Columbia Bottling Co.
Astoria, Oregon.
Agents for the H. Weinhard Brewery, Manufacturers of
Tillamook Rock Brand Carbonated Beverages.
Agents for the Bartlett Spring Mineral water.

MONEY LOANED
ON REAL ESTATE.
LONG TIME, EASY PAYMENTS,
RELIABLE REPRESENTATIVES
WANTED.
The Jackson Loan & Trust Co.
Fort Worth, Texas; or Jackson, Mississippi.