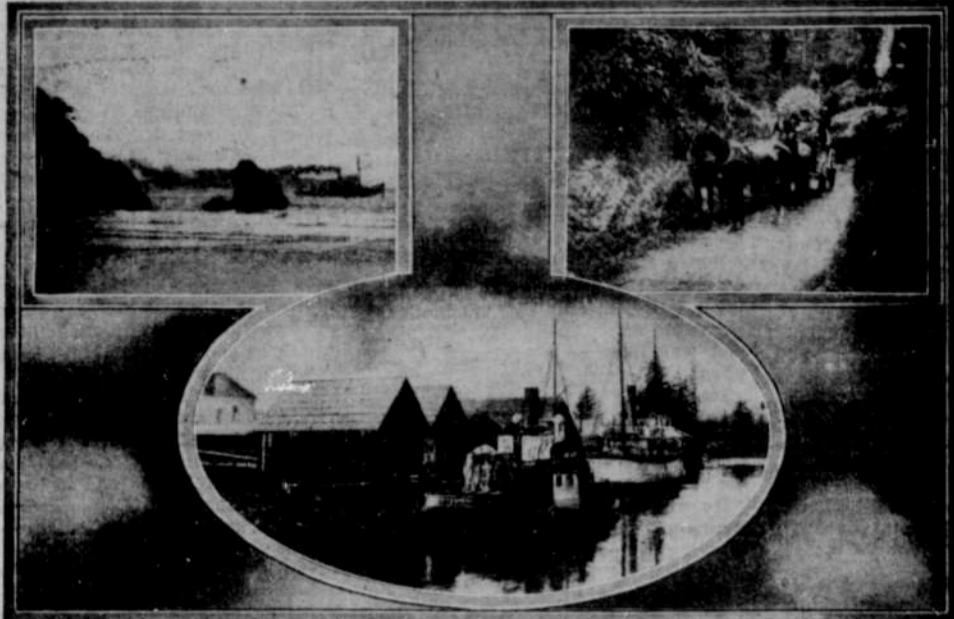
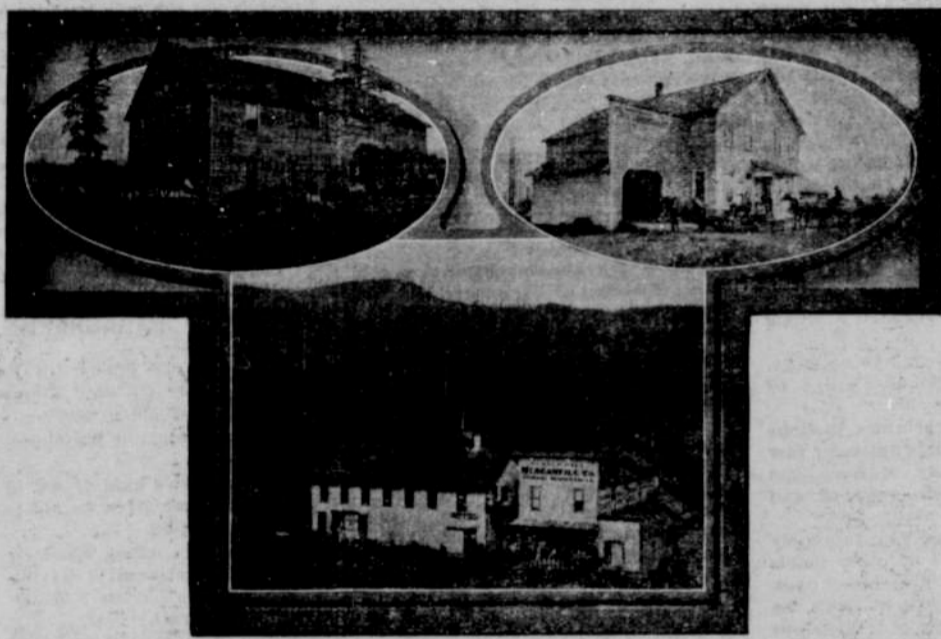


VIEWS OF TILLAMOOK COUNTY.

A Country with Wonderful Resources and Possibilities will have Industrial Boom.



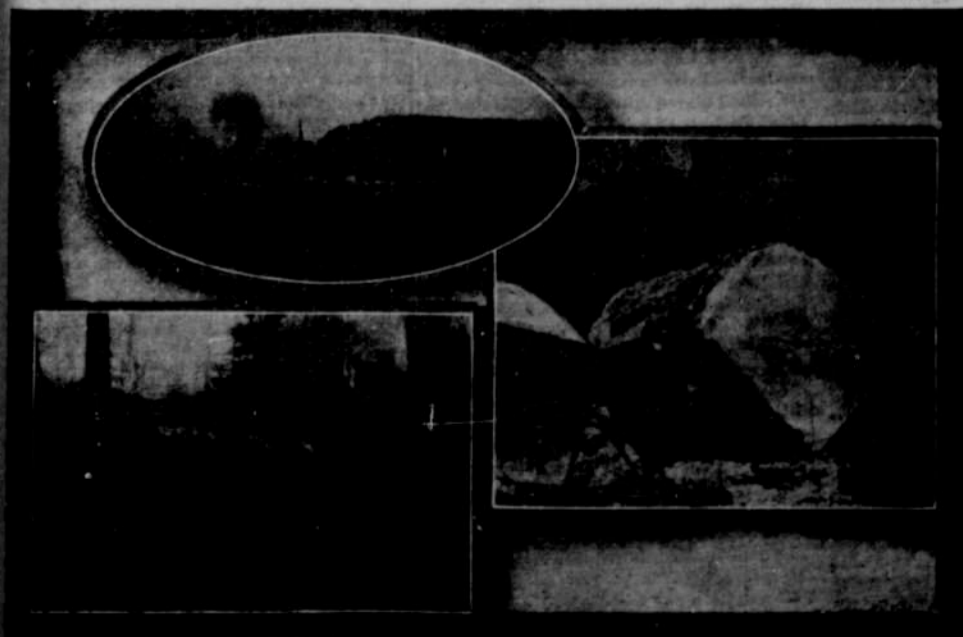
Crossing Tillamook Bar, Water Front at Tillamook City and Stage Line.



Maple Leaf Creamery, Cloverdale Factory, Fairview Creamery.



Hunting and Fishing.



Logging and Loading Lumber at Hobenville.

Plenty of Openings for Capital and Manufacturing Industries.

CONTRACT FOR LYTLE ROAD LET

Calls for Completion of Twenty Miles by December 1.—Will Cost About Half a Million Dollars.

PORTLAND, May 1.—Approximately \$25,000 a mile, without equipment, is what it will cost the Pacific Railway & Navigation Company to construct its line from Tillamook to a point twenty miles north, according to a contract for the work signed yesterday. Robert Wakefield was given the contract and he bids on various kinds of work, the total to about \$500,000.

It is stipulated that the work must be completed by December 31, and it is to start immediately. There is considerable rock work in the twenty miles, and it includes one 300-foot tunnel in addition to three steel-span bridges. Under the direction of Chief Engineer George Davis, the company has prosecuted work in the vicinity of Tillamook, covering the line from the city up the Miami River to the mouth of Foley Creek. But the grade was not completed, and it has been turned over to the contractor.

It is stipulated in the agreement that besides doing the grading the contractor shall lay the track and all connections in that stretch, and shall surface and ballast it, in readiness for trains to operate. Another contract was signed by President E. E. Lytle a few days ago with McCab Brothers for boring a rock tunnel just out of Buxton. This will require about five months to complete. As soon as the cross-sectioning of the line beyond the tunnel is ended, another contract for 20 miles will be awarded, saving but 32 miles of the main line to be let next year. The latter stretch is expected to prove the most difficult, and will demand the expenditure of a large sum. The outlook is that through communication will be established between Tillamook and the Willamette Valley by December, 1918.

In the right of way and terminal contracts about Tillamook, it is stipulated the first twenty miles of the line from the coast will be laid by December 31, and if the progress anticipated is realized, there will be a good service established by that time. A better route has been found for the Salmonberry line, and work will also be started there when surveys are completed.

For going down in the Panama zone with the big stick, the Monroe doctrine and a spade Mr. Olney accuses Uncle Sam of trying to be the "mandatory of civilization."

Mr. Gladstone predicted that by the end of the present century the United States would have a population of 600,000,000 and be more prosperous on account of the increase. If that number of people can govern themselves successfully the rest will be likely to ask to hitch on, or follow the example.

In speaking of Arbor day the governor of Connecticut says: "The teachers of our schools are urged to impress upon their pupils the lesson suggested by the proclamation, and to stimulate in them a love of our song birds. The kindness to bird and animal is akin to love of humankind." This talk is better than some of the political sort.

In order to exterminate an insect pest, Germany proposes to replant some of its vineyards with American varieties. This view of a m'crobe trouble is quite a novelty at Berlin.

It is said that though New York has voted \$30,000,000 for good roads and is spending some of the money, it has not yet settled the questions of proper construction and maintenance. Road improvement will make no headway with the cart before the horse.

Relief from rheumatism pains.
Among the troubles the most annoying kind of rheumatism is one of the most aggravating. "I suffered with it for over two years," says Mr. Roland Curry, a patrolman, of Key West, Fla. "I sometimes it settled in my knees and lamed me so I could hardly walk, at other times it would be in my feet and hands so I was incapacitated for duty. One night when I was in severe pain and lame from it my wife went to the drug store here and came back with a bottle of Chamberlain's Pain Balm. I was rubbed with it and found the pain had nearly gone during the night. I kept on using it for a little more than two weeks and found that it drove the rheumatism away. I have not had any trouble from that disease for over three months." For sale by Clough's Drug Store.

Timber Claim for Sale
On Nehalem Bay in Sw. 1/4 of Sw. 1/4 of sec. 11, N. 1/2 of R. 14 and Sw. 1/4 of N. 1/4 Estimate 4,955,000. Price \$2,000. Owner Geo. F. Hays, Rooms 1-2, McBlk, Bellingham, Wash.



Exhibit of Tillamook Cheese.



Log Drive Containing 10,000,000 Feet of Lumber.



The Pacific Ocean.



Small Tillamook Dairy Farm.

Come to Tillamook and Grow up with this Wonderful Country.