

GREAT IS THE AMERICAN FARMER.

GUY ELLIOT MITCHELL.

Secretary Wilson's report to the President on the present condition of the American farmer and of the work of his Department is the most remarkable statement of a great people's prosperity since it has probably ever been issued since time began. The Secretary says that it is a most grateful task to present to his Chief and thus to the American people a pen picture of the American farmer as he is today, to make clear the pre-eminent position of the farming industry, its wonderful productiveness, and its large contributions to the general prosperity of the country.

His report also points out some of the more important work by which his Department seeks to benefit the farmer.



SECRETARY WILSON, OF THE DEPARTMENT OF AGRICULTURE.
The value of the dairy cow does not come to the farmer until the estimate of the value of dairy products for 1905 reaches \$685,000,000. The farmer's hen competes for precedence with wheat, poultry products aggregating half a billion dollars in value.

Value of Farm Animals.
The value of horses and mules on farms exceeded last winter \$1,452,000,000. Milch cows are advancing in numbers and are worth \$482,000,000. The value of all other cattle is estimated at \$662,000,000.

Great Amount of Exports.
During the last fiscal year, exported domestic farm products were valued at \$827,000,000. During the last sixteen years the domestic exports of farm products have amounted to \$12,000,000,000, or \$1,000,000,000 more than enough to buy all the railroads of the country at their commercial value, and this

Plant Diseases and Plant Breeding.
The Bureau of Plant Industry is organized into eleven offices and employs over 500 persons, about 60 per cent. of whom are engaged in distinctly scientific work.

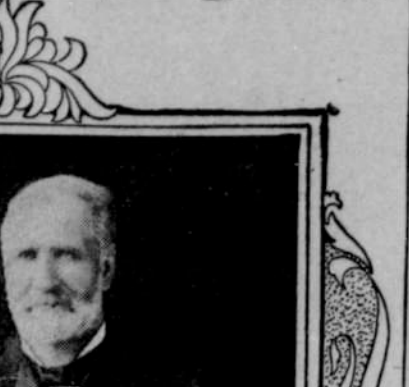
Growth of the Forest Service.
An important achievement in Forestry during the past few years has been to enlist the sympathy and cooperation of lumbermen and forest owners, and the Secretary urges that the work of education continue until

Beneficial Insects Introduced.
Work has been done by the Bureau of Entomology in the introduction of the fig fertilizing insect of South Europe, the introduction of a parasite of the black scale so injurious to citrus and olive crops in California from South Africa, and the introduction with success in the Southern States

Chemical Investigations.
The Bureau of Chemistry has conducted important investigations relat-

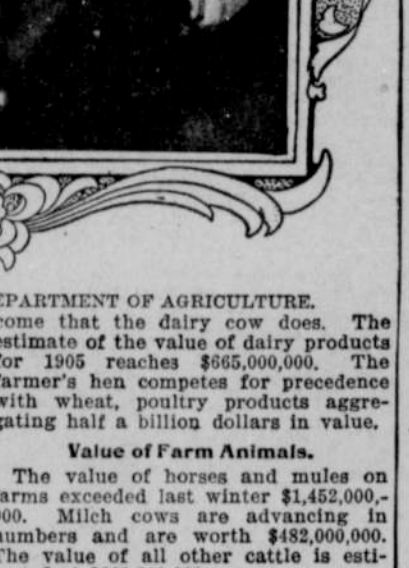
able increases in bank deposits in agricultural States and the increase in the number of small country banks are directly and indirectly because of the profits that have come to the farmers.

Weather Bureau Work.
The report presents the work accomplished by the Weather Bureau for



ASST. SECRETARY HAYS.
The benefit of the farmers, mariners, and manufacturers, and points out that with all the development of this work the average per annum increase in the cost of the service for the past ten years is but 4.41 per cent.

Suppression of Diseases of Animals.
Of the Bureau of Animal Industry the Secretary says that the work of fighting contagious diseases of animals has been unremittingly carried on. The report refers in detail to the principal diseases which have been made the subject of study, and concludes that in every case the efforts of the Bureau have been attended with a more satisfactory control or complete eradication. He commends highly the skill



MR. PINCHOT, CHIEF OF THE BUREAU OF FORESTRY.
and energy which characterized the suppression of foot-and-mouth disease in the New England States in 1902 and 1903.

Plant Diseases and Plant Breeding.
The Bureau of Plant Industry is organized into eleven offices and employs over 500 persons, about 60 per cent. of whom are engaged in distinctly scientific work.

Growth of the Forest Service.
An important achievement in Forestry during the past few years has been to enlist the sympathy and cooperation of lumbermen and forest owners, and the Secretary urges that the work of education continue until

Beneficial Insects Introduced.
Work has been done by the Bureau of Entomology in the introduction of the fig fertilizing insect of South Europe, the introduction of a parasite of the black scale so injurious to citrus and olive crops in California from South Africa, and the introduction with success in the Southern States

Chemical Investigations.
The Bureau of Chemistry has conducted important investigations relat-



DR. HOWARD, Chief of the Bureau of Entomology.
public opinion will not tolerate heedless waste or injudicious loss. In the saving of waste the Service has added vastly more to the National wealth than its total expenditures during its entire history. The control of the forest reserves, embracing property worth in cash at least \$250,000,000, has been transferred to the Forest Service. The Service continues to afford important aid to private forest owners.

Chemical Investigations.
The Bureau of Chemistry has conducted important investigations relat-

Beneficial Insects Introduced.
Work has been done by the Bureau of Entomology in the introduction of the fig fertilizing insect of South Europe, the introduction of a parasite of the black scale so injurious to citrus and olive crops in California from South Africa, and the introduction with success in the Southern States

Chemical Investigations.
The Bureau of Chemistry has conducted important investigations relat-

ing to our cereal products and prepared meats. The latter included a systematic examination of canned goods. Its practical experiments have developed the fact that, without exception, the addition of the ordinary preservatives to foods is prejudicial to health. The Secretary argues the need of protecting the public from these evil effects by legislation.

Soil Surveys and Soil Studies.
In spite of the activity of the Bureau of Soils, there are on file at the present time requests for mapping 215 counties in 40 States and territories. The surveys already made aggregate 63,000,000 acres in 44 States and territories. The soils adapted to spe-



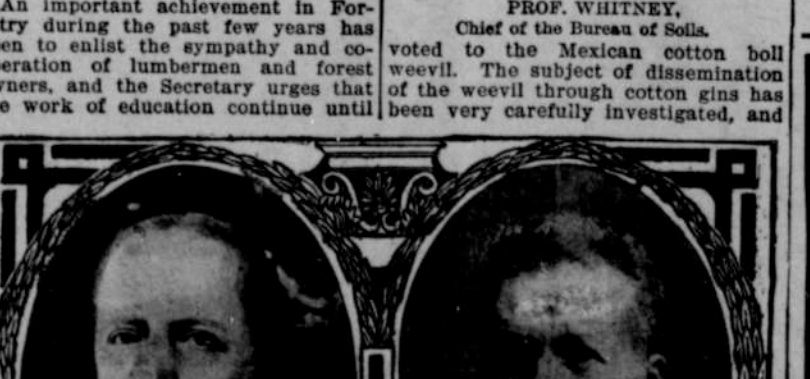
PROF. GALLOWAY, Chief of the Bureau of Plant Industry.
cial crops such as the grape, the apple, citrus fruits, the sugar beet, alfalfa, rice, corn, cotton, etc., have all been made subjects of special study based on the field surveys. The investiga-



DR. MERRIAM, Chief of the Bureau of Biological Survey.
important results have been obtained, resulting in recommendations to the ginners calculated to greatly reduce this danger.

Beneficial Insects Introduced.
Work has been done by the Bureau of Entomology in the introduction of the fig fertilizing insect of South Europe, the introduction of a parasite of the black scale so injurious to citrus and olive crops in California from South Africa, and the introduction with success in the Southern States

Chemical Investigations.
The Bureau of Chemistry has conducted important investigations relat-



DR. MERRIAM, Chief of the Bureau of Biological Survey.
important results have been obtained, resulting in recommendations to the ginners calculated to greatly reduce this danger.

Beneficial Insects Introduced.
Work has been done by the Bureau of Entomology in the introduction of the fig fertilizing insect of South Europe, the introduction of a parasite of the black scale so injurious to citrus and olive crops in California from South Africa, and the introduction with success in the Southern States

Chemical Investigations.
The Bureau of Chemistry has conducted important investigations relat-

Beneficial Insects Introduced.
Work has been done by the Bureau of Entomology in the introduction of the fig fertilizing insect of South Europe, the introduction of a parasite of the black scale so injurious to citrus and olive crops in California from South Africa, and the introduction with success in the Southern States

Chemical Investigations.
The Bureau of Chemistry has conducted important investigations relat-

STOP YOUR RUNAWAY

None Genuine Unless Stamped
LIES UNDER AND BUCKLES' CROWN PIECE OF BRIDLE.
THE GEER SAFETY REIN
You Can Do It EVERY TIME With A GEER SAFETY REIN
PRICE, COMPLETE, \$5.00
Expressage Prepaid
No more Smash-ups; No more Lives Lost; Can be buckled on, in a minute, to any Bridle.
WORKS INDEPENDENTLY OF THE DRIVING REINS.
Write for descriptive circular, free on application, to
THE GEER MANUFACTURING CO.,
47 EXCHANGE PLACE, NEW YORK.
Will Stop any Horse or Money Refunded.

of a parasite of the San Jose scale from China.

Life Zones and Crop Zones.
The work of the Bureau of Biological Survey includes the determination of the boundaries of the natural life zones of the United States and the corresponding crop zones. The chief purpose is to ascertain the boundaries of natural life zones with a view to adding the farmer in selecting crops best adapted to his locality and in avoiding crops unsuited to it.

Studies of Birds.
One section of the Biological Survey is engaged in the study of birds and their various relations to man, especially to determine whether birds damage crops, whether they protect insects either injurious or beneficial, and to what extent they feed upon weed seeds. Thousands of birds' stomachs are examined in gathering facts on this subject.

Publications of the Department.
In the Division of Publications more than twelve million copies of publications have been distributed by the Department during the past year, nearly 45 per cent. of which were distributed through the Senators and Representatives in Congress.

Need of Government Crop Reports.
Referring to the work of the Bureau of Statistics, the Secretary says that the development of organizations to fix prices, and in some cases to force temporary changes giving unnatural advantages to price manipulators, has led to the need of a strong and impartial agency to make comprehensive reports of actual facts relating to prospective crops and yields, that all concerned may know how to buy and sell.

The Improvement of Public Roads.
The work of the Office of Public Roads is primarily educational in character. Its province is to detail experts to give information and advice. In many communities it is found advisable to supplement advice by practical demonstration of effective road building. These roads have been built in thirty-eight States.

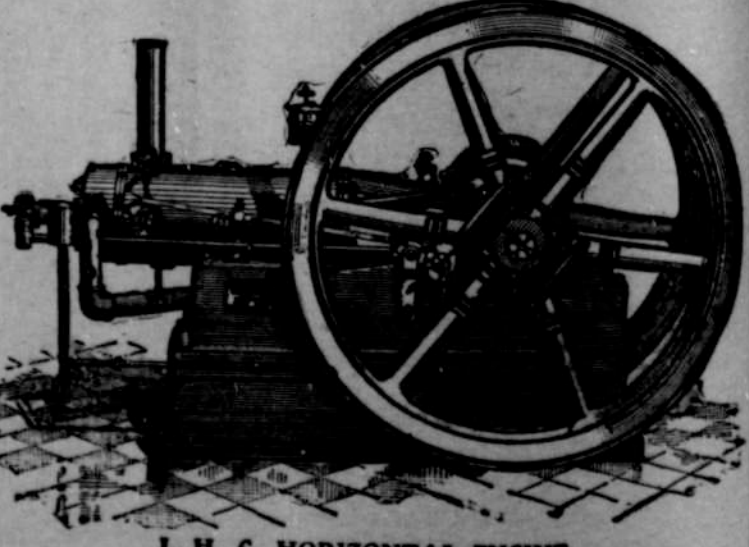
Speaking of the growth of the Department, the Secretary reports the number of persons on the rolls July 1, 1905, to be 5,446. Of these, 2,326 are rated as scientists and scientific assistants. This shows an increase since July 1, 1897, of 3,003 persons on the rolls of the Department.

Gleanings in Bee Culture
teaches you about bees, how to handle them for honey and profit. Send for free copy. Read it. Then you'll want to subscribe. 6 month's trial 50c. Don't delay but do it to-day.
A. I. Root Co., Medina, Ohio.

Kirk's AMERICAN CROWN SOAP
is a green soap, consistency of paste, a perfect cleanser for automobile machinery and all vehicles; will not injure the most highly polished surface. Made from pure vegetable oils. If your dealer does not carry American Crown Soap in stock, send us his name and address and we will see that your wants are supplied. Put up in 2 1/2 lb. and 50 lb. pails.
James S. Kirk & Company CHICAGO, ILL.

International Harvester Co. GASOLINE ENGINES

When equipped with an I. H. C. gasoline engine, the farm, the dairy, the mill, the threshing machine, or the husker and shredder can be operated more economically than with any other power. Farmers who have water to pump, wood to saw, feed to grind or corn to shell, can do this work at a minimum cost with I. H. C. engines.



I. H. C. HORIZONTAL ENGINE
I. H. C. gasoline engines are made in the following sizes: 2, 3 and 5 H. P., vertical type, stationary; 6, 8, 10, 12 and 15 H. P., horizontal type, stationary; and 6, 8, 10, 12 and 15 H. P., horizontal type, portable.
WRITE FOR GASOLINE ENGINE BOOKLET.
International Harvester Co. of America
(Incorporated)
7 Monroe Street Chicago, Ill., U. S. A.

What More Acceptable CHRISTMAS REMEMBRANCE

Could you send to your friends? It Costs Ten Cents It is Worth Ten Dollars WHY? BECAUSE

Every Woman's Life is a Problem of HOW TO MAKE A LIVING or HOW TO MAKE A HOME and ONE HINT OR SUGGESTION from ONE WHO KNOWS is oftentimes OF VALUE INCALCULABLE to the WORKER OR HOUSEWIFE How to Save Time How to Save Steps How to Make a Home

What it ought to be IS TOLD BY ONE WHO KNOWS in

MAXWELL'S Homemaker Magazine

An Illustrated Monthly Edited by Amy Clisbee Maxwell which will be sent to you ONE WHOLE YEAR FOR ONLY

TEN CENTS
Send a dime or five two-cent stamps to

MAXWELL'S HOMEMAKER MAGAZINE
1405 Fisher Building CHICAGO, ILL.