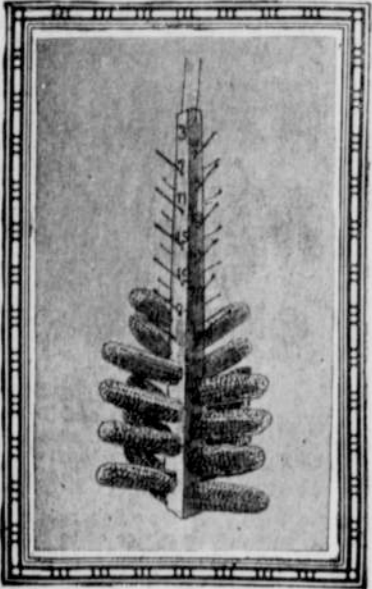


KING CORN.

How the Farmer Can Double His Great American Crop.

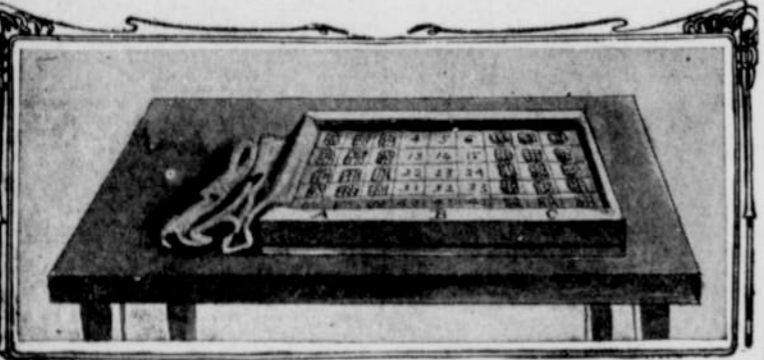
Corn planting time! The United States this year will have over 90,000,000 acres planted to this king of crops. For this enormous acreage 15,000,000 bushels of seed will be required. Probably but little thought is given by the average farmer to the germinating quality of the seed used, for he has so long been accustomed to getting a "stand" under ordinary favorable conditions, varying from 60 to 85 per cent, that many have come to think a more complete stand impossible. Yet experiments have shown that barring unfavorable weather at planting time, the work of germs, wire-worms, and the like, there is no reason why a stand of corn should be less than 95 per cent. Of recent years, however, conditions have much improved, and never before has there been such a demand for seed corn of high vitality. Some of our best farmers are beginning to realize that one of the greatest factors in profitable corn production is the use of seed which will show a high per cent of germination.

If each corn grower would give a little time during the early spring to the testing of the seed, the vitality of each individual ear of corn intended for planting could be readily determined. The poor ears could then be discarded, and the millions of bushels of seed corn which fall to grow each spring could be very profitably converted into pork and beef. Of the 15,000,000 bushels of seed corn which will be planted this year, it is almost certain that from two to three million bushels, or nearly 20 per cent, of the corn first planted, will fall to grow as a result of the low vitality of the seed. Thousands of acres will have to be replanted either in their entirety or in part, and many thousands more will grow to maturity with an imperfect stand.



TESTING RACK.

It seems incredible of realization, that the average yield of corn in the United States in 1905, when the total production was the largest in our history, was only 28.8 bushels of shelled corn per acre. It is still more surprising to know that the average production per acre is practically the same to-day as it was forty years ago. In fact, the average yield per acre for the ten years from 1866 to 1875 was 26.07 bushels as compared with 25.2 bushels for the ten years from 1896 to 1905. While there are several rea-



A SIMPLE GERMINATING BOX.

sons for this, the principal reason is probably carelessness in the use of seed of low vitality.

To Test Each Corn Ear.

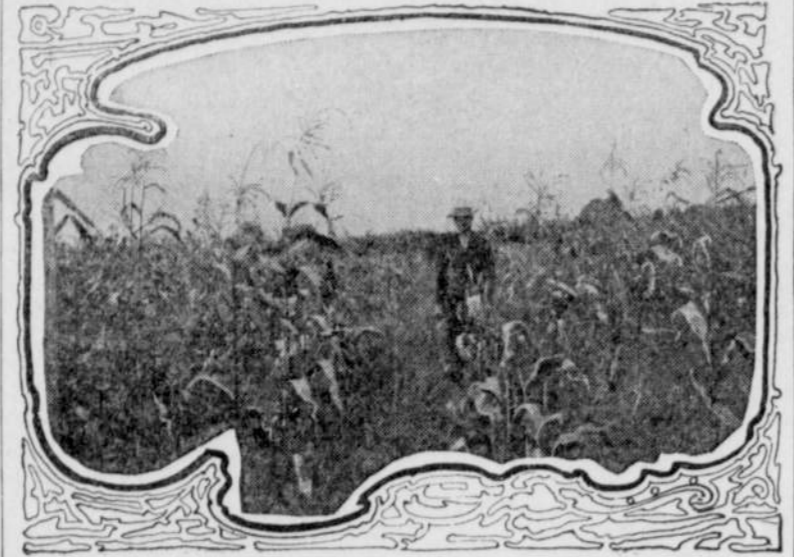
The statement is made by officials of the Department of Agriculture that while corn breeders have achieved marked success in the production of improved types of corn during the last decade, unless the farmers take better care of their seed corn and test each ear separately, preparatory to planting, the chances are that the average yield of corn per acre in the United States will not be materially increased.

In our principal corn-growing States, corn is planted in hills 3½ feet apart each way, giving 3,566 hills per acre. In most sections three stalks to the hill is considered a perfect stand; in some States, two is the standard. Yet if each hill would produce but one medium sized ear, 6 or 7 inches in length and weighing a trifle more than 9 ounces, the yield for each acre would be 28.8 bushels, the average yield per acre in the United States in 1905.

A single ear of corn to the hill the size shown as A in the illustration would give an average of 28.8 bushels to the acre; a single ear shown as B would give 30 bushels per acre; an ear such as C would produce 40 bushels per acre; an ear such as D would yield 45 bushels per acre; while an ear like E, which weighs a trifle less than a pound, would yield 50 bushels of shelled corn per acre, counting only one such ear for each of the 3,566 hills. There are, however, very few farmers who raise as much as 50 bushels of shelled corn per acre. Yet every corn grower can probably produce many ears which are larger than that shown as E in the cut. Eliminating, however, both ears D and E and granting that every farmer could harvest from each hill two such ears as the one shown as C, an ear which is less than 8½ inches long, and weighs 12.6 ounces, the yield would be 80 bushels of shelled corn per acre. Are

there any corn growers who can not produce the equivalent of at least two such ears to every hill? How many grow 80 bushels of shelled corn per acre?

The time required to test individual ears for vitality is very small when it is considered that 12 or 15 ears will furnish enough seed to plant one acre. Experiments have shown that if a few kernels (preferably six) are taken from different parts of an ear of corn and all are found to germinate well—that is, to produce good healthy sprouts—practically all of the kernels on that ear will likewise show strong vitality. On the other hand, if the part of all of



WHAT MAKES THE CORN AVERAGE LOW.

the kernels tested fail to germinate or show only weak sprouts, the proportion will be the same for all of the kernels on such ears. And the experienced corn grower will be not a little surprised to find many a fine looking ear of corn among his selected seed, the kernels of which will not sprout at all.

Better Now Than Not at All.

Germination tests should be made five or six weeks before planting time, but even if it is necessary to stop the plow in the field, it is far more profitable to have a good stand of corn on 19 acres than it is to have a poor stand on 20 acres, thereby saving the time and labor necessary to prepare the ground and to plant and cultivate the additional acre. Yet many farmers are every year planting and cultivating 3 or 4 acres in every 20, for which they receive comparatively no returns.

In making the tests it is essential that each ear tested should be given a number and all kernels taken therefrom given a corresponding number so that after the tests the faulty ears may be thrown out. Many kinds of germinating boxes and methods for testing seed corn have been described in various publications, but the Department of Agriculture has designed a simple box which is believed to combine most of the advantages, and give good results in the hands of almost any operator. The box would be about 1½, or 2 inches deep inside and the length and width such as to suit the needs of the individual farmer, but it should not be made water-tight. Instead of filling the box with sand, soil, or sawdust, as is commonly recommended, the seed bed is made of heavy cotton flannel or similar ma-

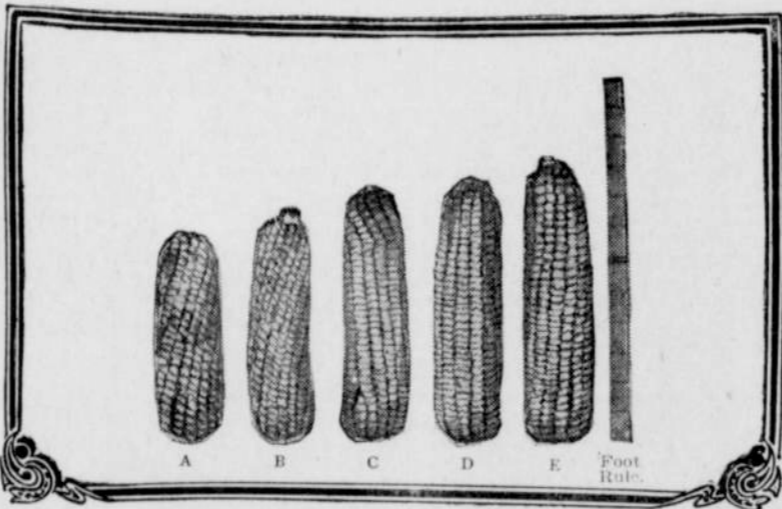
terial, using two or three thicknesses of cloth in the bottom of the box and one or two thicknesses of cloth for covering the kernels after the frame has been filled. The cloth at the bottom should be marked off into squares 2 inches each way, and numbered, each one of which is to be filled with kernels from ears which are given a number corresponding to the square used.

A Very Simple Test. For use, first wet the cloth thoroughly by soaking in water, and then place the half cloth, double thickness, which has been marked in squares, in the bot-

tom of the germinating box. The kernels from ear No. 1 are then placed, germ side up, in square No. 1 and so on. When all of the squares have been filled, fold the other end of the cloth carefully over the kernels. If during the sampling the cloths have become dry, sprinkle them well with water

suspended in some suitable place and there need be no fear of the ears being mixed while the germination test is in progress.

The kernels in the testing box should begin to germinate freely about the third or fourth day, but the counting should not be done until the sixth or seventh day, or until most of the shoots or stems are from 1 to 1½ inches long. This part of the testing must be done with considerable care and requires good judgment, as kernels will be found in all stages of development. If the six kernels in any one square in the germinating box show six good healthy sprouts, the ear



CAN NOT YOU GROW TWO EARS LIKE "E" TO EACH CORNHILL?

which they represent should be taken for seed. There will also be cases in which all six kernels have germinated, but will be lacking in vigor. While these kernels might produce a good ear of corn, the chances are that they will never develop, or else will produce but a barren stalk. It is only necessary to remember that all ears showing dead kernels or weak or poorly developed sprouts must be discarded and only those used for seed in which every kernel tested has given a good healthy sprout. The ears which have shown a perfect germination are now ready to be butted and tipped and shelled for planting. In order to insure further uniformity in planting it is advisable to sort the ears before planting into two or three grades, according to the size of the kernels. This grading may also be done by screening, if more convenient.

Remarkable Results of Government Tests.

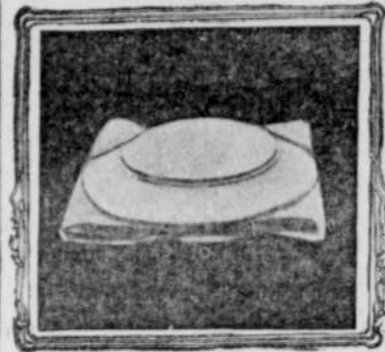
The Department of Agriculture recently made tests of seed corn furnished by farmers in the corn producing States, and of the 3,322 ears tested, 1,906, or the startling percentage of more than one-half, were unfit for seed. These samples were taken from ears picked for seed by good, careful farmers, and are evidently much above the average. The average germination of the 1,906 poor ears was only 77.7



FROM "FARMING." A BUNCH OF FINE SEED.

per cent, while the average germination of both the good and the poor ears, the seeds of which would ordinarily have been used for planting, had not these tests been made, was 86.2 per cent, showing that 13.7 per cent was gained by discarding ears of low vitality. Granting, however, that the

samples tested are representative of the present supply of seed corn, the testing of every ear and the subsequent rejection of poor ears will increase the stand 13.7 per cent. This increased stand would mean an increased yield of 298,140,695 bushels, with a value of \$100,739,912.91 calculated on the basis



COMMON DINNER PLATE FOR SEED TESTERS.

of the average yield and price for the last ten years.

A full description of how to make tests is found in Farmer Bulletin No. 253, by J. W. T. Duvel, which can be had from Members of Congress or the Secretary of Agriculture.

WOMAN'S ADVICE TO FARMERS.

Miss Edith Urme, an Iowa hospital specialist, states that many of the inmates of eastern insane asylums are sons and daughters of the farmer pioneers. They have been brought up to lives of illness and luxury or suffered from monotony of country surroundings. In either case the direct cause for mental derangement is the lack of diversified work for body and mind. The pioneers of the country had no time for brooding over imaginary troubles and were happy. But they neglected to map out the proper courses for their children and in treating them with kindness have paved the way to insanity.

The cities present numerous cases of physical and mental wrecks of young persons brought on by dissipation and strenuousness in the battle for commercial supremacy. Farmers warn their sons and daughters of the dangers that lie in their paths when leaving the farms, but often forget to correct the evils at home. They give their children all the benefits of schools and colleges and leave out the essential fundamental principles of life. Too many are left to remain in idleness because they are taught in

schools and at home that manual labor is not honorable. There is no reason why farm life should become monotonous to any one residing within the boundaries of ordinary civilization. The rural mail carries the daily papers and magazines to the farm door yard; telephones place the farmer in direct communication with the outside world; railroads open the channels of trade to every commercial port; yet there is a life of monotony on many farms. The places are not improved, the owners follow the fashions of their forefathers, they do not adopt new methods in any line and their children become discouraged.

OLDEN DAYS OF WHALING.

The days of the old-time whaling fleets when more than two hundred full-rigged ships sailed out of New Bedford harbor on three and four-year voyages to the most distant and dangerous seas, were over more than half a century ago. The right of Greenland whale of the Arctic waters with his mouth full of whalebone and his cousin, the sperm whale of tropical waters, bearing in his head the precious spermaceti, were practically exterminated by those all-daring, iron-nerved, keen-eyed Yankee skippers. Their splendid ships, the Annie B, the Mary Jane, the Blue-Eyed Susan, great lovers of their wives and sweethearts, were this race of gentlemen adventurers—rotted at the wharves or were degraded to service as coastwise and with them vanished a world of romance and adventure. No men, in no time, more truly than they, "went down to the sea in ships."

Don't Die That Way

Millions Die Every Year from Mere Ignorance of Nature's Laws of Health. Ask yourself the question: "Is Life Worth Living?" And the answer will be: "It depends on your health." Then why not have good health? If you are sick it is because some simple, natural law of health has been violated. Nature is a Stern and Inexorable Judge, and Grants No Pardons When Her Laws are Broken. Better Learn Those Laws. You can't learn them too soon. You can't learn them all at once. Begin right now, and Learn a little every month.

Send a dime or five two-cent stamps to 1405 Fisher Building, Chicago, for one whole year's subscription for Maxwell's Homemaker Magazine, and read the Department of Health. Read it every month—year in and year out—and learn all about Nature's Laws of Health, and save Doctors' Bills and Drug Bills, and you will enjoy many years of Life and Health, and you are assured or cremated doesn't so much matter, it's the living part that counts. Train "Good Health" as your faithful body-guard to kick old "Grim Death" from Maxwell's Homemaker Magazine.

NOTE—If you do not wish to cut the coupon out of your paper, you can send in your subscription on a separate piece of paper.

ONE YEAR FOR 10 CENTS. Subscription Price to Chicago and Foreign Addresses, 25c. Per Year. Cut out this subscription blank, write name and address on lines below, and send us month for twelve months. Don't delay, but send at once.

Name _____
 Box or Street No. _____
 Postoffice _____ State _____
 Enclosed find _____ for _____ years' subscription. State whether a new or old subscriber.

You can subscribe for one, two, three or five years at 10 cents for each year. Better send 50 cents and have five years good reading coming to you. This is the BEST MAGAZINE for the money, ever published in America. Address in full.

Subscription Dept. MAXWELL'S HOMEMAKER MAGAZINE, 1405 Fisher Building, CHICAGO, ILL.

If you wish to have THE HOMEMAKER MAGAZINE sent to friends, use a separate piece of paper for name and address, and enclose 10 cents for each yearly subscription.

JOURNALISM IN CHINA.

Dialect Newspapers Increase Gulf Between Provinces.

United States Consul Anderson, at Amoy, has made a report on journalism among the Chinese. He says: "It is rather surprising, in view of the comparatively small population of foreigners in China, how many large publications there are in foreign languages. The prices they obtain for their publications and their work probably explain the situation. Shanghai has five daily newspapers, three morning and two evening papers; one is French. It has six foreign weeklies, one German. It also has four Chinese dailies and a large number of Chinese weeklies. 'Practically all of the foreign papers sell for 4½ cents gold per copy. The subscription price is about \$15 gold per annum, postage extra. The Chinese dailies sell for about ½ cent gold per copy. In addition to these publications there are many religious papers, mostly in Chinese, published by the mission authorities.

"In the south Hong Kong dominates the publication business, and as it is a British colony, English publications might reasonably be expected to lead, but on the face of the record the Chinese predominate. There are four English dailies, the Post, the Press, both morning papers, and the Telegraph and the Mail, both evening papers.

"There are six Chinese dailies, and, as in the case of Shanghai, there are a large number of publications designed to fill various wants in South China, a Portuguese weekly and the Government Gazette being among them. In nearly every port of importance in China there is an English publication of some sort.

"The publication houses, as a rule, both newspaper concerns and concerns for general printing only, are fairly well equipped for their work. Some of them attempt work in the line of high grade magazine and book publishing, and while it is not always an unmitigated success from a technical typographical standpoint, it demonstrates that the Chinese workmen, who do most of the work under foreign supervision, will in time acquire considerable merit in this line of effort.

"It is rather interesting to note that China at present seems to be passing through much the same process with its newspapers and other publications that many parts of the United States have passed through. All over the empire native newspapers are being started in the colloquial dialects, and are more or less local in character.

"It is unfortunate in many respects that the publication of newspapers in the several local dialects has developed so generally. While such publications will afford means of educating the people of the empire in some lines, they also furnish the means for deepening the gulfs, dividing the several provinces which differ in dialects. Each newspaper center, if it performs its natural mission, will develop its own language in its own field to the exclusion of a language which might in time become common to all China."

BICYCLES ON THE WANE.

Over Three Times as Many Factories in 1900 as at Present. Statistics furnished by the Census Bureau at Washington show a marked decrease in the manufacture of bicycles. Since 1900 the business has fallen off 65 per cent, the number of establishments being reduced from 312 to 97.

Formerly there were 2,034 salaried officials and employees of the factories where now there are only 360. The falling off in the number of wage earners was 81 per cent. The capital invested in 1900 was \$29,783,659, whereas in 1905 it was \$5,847,803.

The production in 1900 amounted to nearly 32,000,000 bicycles and was reduced in the five years to little over 5,000,000.

In contrast with these figures, the motor cycle factories increased from 159 to 2,289.

New Zealand exports annually \$85,000,000 worth of kauri gum. It is used in the manufacture of varnish.

THIS BOOK FREE

How to select a good Turnover, No. 48 Leader Steel Turnover, No. 49, 50, 51, 52, 53, 54, 55, 56, 57, 58, 59, 60, 61, 62, 63, 64, 65, 66, 67, 68, 69, 70, 71, 72, 73, 74, 75, 76, 77, 78, 79, 80, 81, 82, 83, 84, 85, 86, 87, 88, 89, 90, 91, 92, 93, 94, 95, 96, 97, 98, 99, 100. Other stock, Write, Ross Waring & Vest Co., 744 Tacoma Bldg., Chicago.

FREE BASEBALL OUTFIT!

YOUR EXACT SIZE. SHIRT, handsome gray flannel, with broad shoulder, collar, full at arms, very long, three button front, double breasted, shapely and durable. PANTS, padded or unpadded (as you wish), double breasted, very strong. Pajamas, pants thoroughly quilted, full and very comfortable. Socks, knee elastic. Every piece top long value. HELM, New style, bright colored, has patent nickel buckles.

Send your name and address for only 25 packages of RETURN, to ask for \$1.10 cents a package. Return our \$1.10 certificate from the store and we will immediately send you this splendid outfit and give complete satisfaction. We need nothing but RETURN. Write for details to BLUE NINE MFG. CO., The Old Reliable Firm, 143 Mill St., Concord Junction, Mass.

FREE THIS MANILA BRACELET

from the Philippine Islands, green or white mountings and heart hangings. Write for details to BLUE NINE MFG. CO., The Old Reliable Firm, 143 Mill St., Concord Junction, Mass.

10c

will bring to you by mail a 2oz. box of BUTLER'S FLAVORING CRISTAL'S SUGAR to any 2c bottle of liquid extract (unchangeable in cooking and non-alcoholic). Vanilla, smooth, orange, almond, clove-cinnamon, ginger and nutmeg flavors. Indorsed by U.S. Commission at Paris Exposition. Your money back if you want it. Send 10c to-day to

Jos. Butler Co., 12 Battery Place, N. Y. City

5 Year SOLID GOLD Filled Watch \$5

An Honest Watch at an Honest Price. One of a pair of solid gold containing a pair of diamonds, and is warranted to run for five years. They are made in the U.S. and are guaranteed to run for five years. Filled with the finest jewels and are guaranteed to run for five years. Send your name and address and we will send you a watch of your own choice for five years. This before paying a cent. If you consider this the greatest bargain ever offered, send us your name and address and we will send you a watch of your own choice for five years. Write to-day to

Address: H. C. FARRAR & CO., 414 Broadway, N. Y. City

MINERAL HEAVY REMEDY CURES HEADACHES

Only Sure Cure. Positive and Permanent. Absolutely Pure. \$1.00 Package cures any ordinary case. \$3.00 Package cures any case of chronic headache.

Sent postpaid on receipt of price. AGENTS WANTED. Liberal terms.

Mineral Heavy Remedy Co., 414 4th Ave., Pittsburg, Pa.

Dashboard Line Holder

Quickly adjustable to side or top of any dashboard. Keeps lines from under horse's feet while standing. Lines secured instantly while stepping from vehicle. Prevents tripping and soiled lines. Saves trouble, time and temper. You need one unless you drive an automobile. 20c—ts postpaid.

KANCOY SUPPLY CO. BOX 316 WASHINGTON, D. C.

YOU Can Save a Lot of Money!

Can Save a Lot of Money! Can Save a Lot of Work! Can Increase Your Comfort! Can Increase Your Profits! If you are interested in those things we'll send you our new book about

ELECTRIC STEEL Wheels and the ELECTRIC Handy Wagon

More than a million and a quarter are in use and several hundred thousand farmers say that they are the best investment they ever made. They'll save you more money, more work, give better service and greater satisfaction than any other metal wheel made—because They're Made Better. By every test they are the best. Spoked wheels to the hub. If they work loose, your money back. Don't buy wheels nor wagon until you read our book. It may save you many dollars and it's free.

ELECTRIC WHEEL CO., Box 203 Quinoy, Wis.

ELECTRIC

Send a dime or five two-cent stamps to 1405 Fisher Building, Chicago, for one whole year's subscription for Maxwell's Homemaker Magazine, and read the Department of Health. Read it every month—year in and year out—and learn all about Nature's Laws of Health, and save Doctors' Bills and Drug Bills, and you will enjoy many years of Life and Health, and you are assured or cremated doesn't so much matter, it's the living part that counts. Train "Good Health" as your faithful body-guard to kick old "Grim Death" from Maxwell's Homemaker Magazine.

NOTE—If you do not wish to cut the coupon out of your paper, you can send in your subscription on a separate piece of paper.

ONE YEAR FOR 10 CENTS

Subscription Price to Chicago and Foreign Addresses, 25c. Per Year. Cut out this subscription blank, write name and address on lines below, and send us month for twelve months. Don't delay, but send at once.

Name _____
 Box or Street No. _____
 Postoffice _____ State _____
 Enclosed find _____ for _____ years' subscription. State whether a new or old subscriber.

You can subscribe for one, two, three or five years at 10 cents for each year. Better send 50 cents and have five years good reading coming to you. This is the BEST MAGAZINE for the money, ever published in America. Address in full.

Subscription Dept. MAXWELL'S HOMEMAKER MAGAZINE, 1405 Fisher Building, CHICAGO, ILL.

If you wish to have THE HOMEMAKER MAGAZINE sent to friends, use a separate piece of paper for name and address, and enclose 10 cents for each yearly subscription.