

NEW STOCK OF ELEGANT HOUSEHOLD FURNITURE.

Wall Paper and Linings.

Furniture, etc., Sold on the Installment Plan. Easy terms. Call and Investigate.

We are Headquarters for
HOUSEHOLD FURNISHING GOODS,
 CARPETS, MIRRORS, BEDROOM SUITES,
 MATTING, OIL CLOTH, LINOLEUM,
 LACE CURTAINS, TABLE LINEN, TOWELING,
 STOVES, RANGES, CROCKERY, GLASS,

Sewing Machines.
 Undertaker's Supplies.

Now's the time to furnish your homes. Call and Inspect our Goods. Prices are low for First Class Furniture.

OLSEN & CO., The Tillamook House Furnishers.

MAIL ROUTES IN TILLAMOOK
 Syndicate Contractors Knocked Out--Free Delivery of Mail on Star Routes.

The post office department has called for proposals for performing service on all the mail routes in Tillamook county. The contract is for four years, from July 1st, 1892, and the bids must reach the second assistant postmaster general at Washington, D.C., by 3rd of December, 1901. As the proposals contain a number of new features which are of special interest to the general public, it will not be out of place to acquaint our readers of the contemplated improvements.

Must Reside Contiguous to Route.

There is one thing connected with the new proposals for carrying mail which all will gladly appreciate, that of debaring a syndicate from securing a contract for carrying the mail for the purpose of subcontracting, for in future no bid submitted will be considered unless the bidder shall agree that in the event of the service being awarded to him he will reside on or contiguous to the route, so we are glad to see the pernicious system of making mail routes a matter of trade and barter knocked in the head. It was not conducive to good mail service, and the post office department acted wisely in putting in a provision which disarms the syndicate. Those who want to peek Uncle Sam's mail will not be scared about putting in bids now, for they would rather do business direct with the department than with contractors who gobbled up the routes for the purpose of gain.

Free Delivery on Mail Routes.

In addition to carrying the mails to the various post-offices on the star routes, the carrier on each route (except where otherwise specifically stated) will be also required to deliver mail into all boxes and hang small bags or satchels containing mail on cranes or posts that may be erected along the route, under the following conditions:

Any person living on or near any star route herein described, and not within the corporate limits of any town or within 80 rods of any post-office, who desires his mail deposited at a given point on the line of the route by the carrier on said route may provide and erect a suitable box or crane on the roadside, located in such manner as to be reached as conveniently as practicable by the carrier without dismounting from the vehicle or horse, and such person shall file with the postmaster at the post-office to which his mail is addressed (which shall be one of the two post-offices on the route on either side of and next to the box or crane) a request in writing for the delivery of his mail to the carrier on the route for deposit at the designated point, at the risk of the addressee. The small bag or satchel above described, as well as the box or crane, must be provided by the person for whose use it is intended without expense to the Department.

It shall be the duty of the postmaster at every such post office, upon a written order from any person living on or near the star route, to deliver to the proper mail carrier for that route any mail matter--placing in the respective satchels, where such are used, the mail for the persons to whom such satchels belong--with instructions as to the proper mail box or crane at which said mail matter shall be deposited; but registered mail shall not be so delivered unless expressly requested by the addressee in his written order. No mail matter so delivered to a carrier shall be carried past another post office on the route before being deposited into a mail box or hung on a crane or post.

The carrier on the star route will be required to receive from any postmaster on the route any mail matter or private mail satchel that may be entrusted to him, outside the usual mail bag, and shall carry such mail matter or private mail satchel to and deposit it into the proper mail box or hang it on the proper mail crane placed on the line of the route for this purpose; such service by the carrier to be without charge to the addressee.

The mail carriers must be of good character and of sufficient intelligence to properly handle and deposit the mail along the routes.

The Department does not prescribe any particular design of box or satchel

to be used for this service, but the person providing either should see that it is of such character as to afford ample protection to his mail. If there is a lock attached to the box, a key is not to be held by the carrier, as he is expected to deposit the mail without the necessity of unlocking the box. The box or crane should be so located on the roadside that the carrier can deposit the mail without leaving his vehicle or horse, and yet not where it will obstruct public travel.

The carrier is not required to collect mail from the boxes, but there is no objection to his doing so if it does not interfere with his making the schedule time. The law provides that every carrier of the mail shall receive any mail matter presented to him if properly prepaid by stamps, and deliver the same for mailing at the next post-office at which he arrives, but that no fees shall be allowed him therefor.

Delivery of mail by star-route carriers will not be permitted over such portions of star routes as may have in operation the rural free-delivery service, except as an additional or supplemental service when shown to be necessary and practicable.

The Mail Routes in Tillamook.

Below we give a list of the mail routes to be let in this county, which in most cases gives the amount of money that contractor receives for carrying the mail as well as what the subcontractor receives. As each of these routes will be made free delivery under the above conditions, this is a move in the right direction and will benefit a large number of people along the line of route.

From Blaine to Beaver, 8 miles and back, three times a week.
 From May 1 to September 30, in each year.

Leave Blaine Tuesday, Thursday and Saturday at 9 a.m.

Arrive at Beaver by 11:15 a.m.

Leave Beaver Tuesday, Thursday and Saturday at 11:45 a.m.

Arrive at Blaine by 2 p.m.

From October 1 to April 30, in each year.

Leave Blaine Tuesday, Thursday and Saturday at 8 a.m.

Arrive at Beaver by 11 a.m.

Leave Beaver Tuesday, Thursday and Saturday at 11:30 a.m.

Arrive at Blaine by 2:30 p.m.

Bond required with bid, \$400. Present contract pay, \$79 for twice a week service.

From Emma to Neskowin, 6.25 miles and back, twice a week.

Leave Emma Tuesday and Saturday at 8:40 a.m.

Arrive at Neskowin by 12 m.

Leave Neskowin Tuesday and Saturday at 1 p.m.

Arrive at Emma by 4:20 p.m.

Bond required with bid, \$300. Present contract pay, \$76.09.

From Dolph, by Oretown, to Neskowin, 14.25 miles and back six times a week.

Leave Dolph daily, except Sunday, at 7 a.m.

Arrive at Neskowin by 12 m.

Leave Neskowin daily, except Sunday, at 1 p.m.

Arrive at Dolph by 6 p.m.

Bond required with bid, \$1,500. Present contract pay, \$449.56 subcontract pay, \$367.74.

From Hebo, by Cloverdale, to Woods, 8 miles and back, six times a week.

Leave Hebo daily, except Monday, after arrival of mail from Grandronde, but not later than 10 p.m.

Arrive at Woods in 4 1/2 hours.

Leave Woods daily, except Monday, at 5 a.m.

Arrive at Hebo by 9:30 a.m.

Bond required with bid, \$1,000. Present contract pay, \$312; subcontract pay, \$262.

From Hobsonville to Garibaldi, 3.25 miles and back, six times a week.

Leave Hobsonville daily except Tuesday, after arrival of mail from Tillamook and Nehalem, but not later than 12 m.

Arrive at Garibaldi in 1 hour.

Leave Garibaldi daily, except Tuesday, at 9 a.m.

Arrive at Hobsonville by 10 a.m.

Bond required with bid, \$500. Present contract pay, \$156.

Arrive at Hobsonville by 2 p.m.

Leave Hobsonville daily, except Sunday, at 10:15 a.m.

Arrive at Nehalem by 7:15 p.m.

Bond required with bid, \$1,700. Present contract pay, \$2,490 for 45.25 miles and back six times a week service.

From Spruce to Sandlake, 9 miles and back, three times a week.

Leave Spruce Tuesday, Thursday and Saturday, at 11:30 a.m.

Arrive at Sandlake by 2:30 p.m.

Leave Sandlake Tuesday, Thursday and Saturday at 3 p.m.

Arrive at Spruce by 6 p.m.

Bond required with bid, \$500. Present contract pay, \$128.99; subcontract pay, \$140.

From Tillamook to Netarts, 7 miles and back, three times a week.

Leave Tillamook Tuesday, Thursday and Saturday at 7 a.m.

Arrive at Netarts by 12 m.

Leave Netarts Tuesday, Thursday and Saturday at 1 p.m.

Arrive at Tillamook by 6 p.m.

Bond required with bid, \$500. Present contract pay \$199.

From Tillamook, by Riverdale and Bay City to Hobsonville, 8:50 miles and back, six times a week.

Leave Tillamook daily, except Tuesday, at 6:30 a.m.

Arrive at Hobsonville by 10 a.m.

Leave Hobsonville daily, except Tuesday, on arrival of mail from Seaside, but not later than 1 p.m.

Arrive at Tillamook in 3 1/2 hours.

Bond required with bid, 1,100. Present contract pay \$312.

From Tillamook to Barnegat, 10.50 miles and back, twice a week.

Leave Tillamook Monday and Friday at 6:45 a.m.

Arrive at Barnegat by 11 a.m.

Leave Barnegat Monday and Friday at 11:30 a.m.

Arrive at Tillamook by 4:45 p.m.

Bond required with bid, \$500. Present contract pay \$282.87; subcontract pay 222.35.

Delivery of mail into boxes not required on this route.

From Grandronde, by Dolph, Hebo, Beaver, Spruce and Nestocton to Tillamook, 44 miles and back, six times a week.

Leave Grandronde daily, except Sunday, on arrival of mail from McMinnville.

Arrive at Tillamook in 20 hours.

Leave Tillamook daily, except Sunday, at 6 p.m.

Arrive at Grandronde in 23 hours.

Bond required with bid, \$5,000. Present contract pay \$1,683.

From North Yamhill, by Fairdale and Trask to Tillamook, 43 miles and back, six times a week.

Leave North Yamhill daily, except Sunday at 8 p.m.

Arrive at Tillamook next days by 4 p.m.

Leave Tillamook daily, except Sunday at 6 p.m.

Arrive at North Yamhill next days by 2 p.m.

Bond required with bid, \$5,000. Present contract pay \$2,500; subcontract pay \$2,300.

Administrator's Notice.

Notice is hereby given that Mrs. A. L. Donaldson has filed her final account as administratrix of the estate of Jos. Donaldson, deceased, and Tuesday, the 5th day of November, 1901, has been set for hearing the same.

Dated, September 10th, 1901.

A. L. DONALDSON.

Yellow Fir Lumber Co.'s Prices.

Below will be found the Yellow Fir Lumber Company's price list for lumber.

PRICES FOR LUMBER AT THE MILLS: Per 1000 ft.

Rough lumber \$6 50

Sized lumber 7 50

Ship lap 8 00

Dressed lumber, flooring & rustic 14 50

PRICES AT TILLAMOOK CITY. And delivered anywhere along the main road from the mills:

Rough lumber 8 00

Sized lumber 9 00

Ship lap 9 50

Dressed lumber up to 16in. wide. 15 00

Flooring and rustic 16 00

Dressed pickets from 1 to 3 inches wide, 1/2 in. per lineal foot.

Above prices are for lumber less than thirty feet long. Leave orders at the saw mills or with

E. G. E. WEST, President; PETER BRANT, Secretary.

Dallas College, Dallas, Oregon.

HEALTHFUL LOCATION.

Complete Courses in

ACADEMIC STUDIES, BUSINESS, ENGLISH, CLASSICS, SCIENCES, PHILOSOPHY, MUSIC, ART, ETC., ETC.

THOROUGH INSTRUCTION.

Athletic, Literary and Religious Organizations. EXPENSES REDUCED TO THE MINIMUM.

First Term Begins September 25th, 1901.

Second Term Begins January 2nd, 1902.

Third Term Begins March 21st, 1902.

For further information and catalogue address.

C. C. POLING, President.
 DALLAS, OREGON.

Where Do You Trade?

It is natural to suppose where you can do the best. We can duplicate San Francisco prices on

HARDWARE, FARMING MACHINERY, Tools, Groceries, Feed and Provisions.
 CARRY THE LARGEST STOCK IN THE STATE.
FOARD & STOKES CO., Astoria, Ore.

"C." BEN RIESLAND,

FOR
DAIRY FARMS, TIMBER CLAIMS,
 Life and Fire Insurance,
 Financial Agent,
 Tillamook City, Oregon.

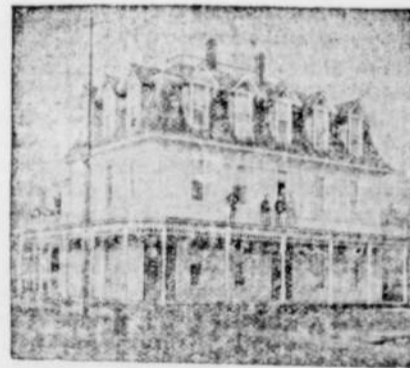
Allen House,

J. P. ALLEN, Proprietor.

First class accommodation at second class rate.

BEST MEALS IN THE CITY.

Tillamook, Ore



BANK OF C. & E. Thayer.

General Banking and Exchange business. Exchange on England, Belgium, Germany, Sweden, and all foreign countries
TILLAMOOK, ORE.

CHAS. PETERSON,



SHAVING, HAIR CUTTING, SHAMPOOING,
Hot and Cold Baths.

EVERYTHING STRICTLY FIRST CLASS

C. A. BAILEY,

DEALER IN
STUDEBAKER WAGON OSBORNE MOWERS,
 Buggies, hay rakes, plows, and other farm machinery. You can save money by dealing with me. Special Prices on Buggies and Spring Wagons.
 C. A. BAILEY, Tillamook, Ore.

THE RED SHOE STORE.

Just received a neat and well selected Stock of foot ware of summer goods. For Gentlemen, Ladies', Misses and Children Shoes direct from Chicago. It will pay you to examine my GOODS and PRICES before purchasing elsewhere.



MOOSE SKIN SHOE.

PATENT No. 20,070.
 NOTICE—No charge for sewing rip or nailing soles of shoes that get loose bought of me.

P. F. BROWNE, Salesman.

McINTOSH & McNAIR,

Dealers in

HARDWARE, TINWARE and CHINA.

STOVES, RANGES and HEATERS.

Headquarters for Dairymen's Supplies.

Agent for CHARTER OAK STOVES. Western Washing Machines. Large Stock of Paints, Oils, Varnishes and Glass.

The Most Reliable GROCERY STORE in Tillamook.

LUMBER AT TILLAMOOK.

J. A. TAFT CO.

HAVE ON HAND

DRY FLOORING, CEILING,

Finish Rustic, Wainscoting, Mouldings and Ship Lap. Also all Sizes of ROUGH LUMBER.