

Table with columns for various items and prices, including flour, sugar, and other goods. Includes a note: 'Table is for Dry Docking Bar, not for Tiltamook Bar...'.

Table is for Dry Docking Bar, not for Tiltamook Bar... of level of average waters, to which the soundings from the Coast survey charts.

OFFICIAL DIRECTORY. UNITED STATES.

Benjamin Harrison, Levi P. Morton, Charles D. Walcott, William Windom, J. W. Noble, Rufus H. French, B. F. Tracy, John W. Sawyer, J. B. McMillan, Jeremiah Rusk, etc.

THIRD JUDICIAL DISTRICT.

Chief Justice: F. A. Moore; Clerk: R. E. Bohrer; District Attorney: G. G. Brigham; Tiltamook County: W. M. Stilwell, etc.

SOCIETY DIRECTORY.

Tiltamook Lodge No. 57, A. F. & M. meets on 1st Saturday night of each month... Corinth Post G. A. R. meets first Wednesday of each month...

CHURCH DIRECTORY.

Tiltamook Charge, M. E. Church, Sunday in the month, Long Prairie 10:30, Pleasant Valley 11:30, etc.

Presbyterian Church.

Rev. H. B. Robinson, Pastor. Will preach at Tiltamook on 1st Sunday of each month...

Methodist Episcopal Church.

Services every Sabbath at 11 a. m. and 7 p. m. A cordial invitation extended to all.

EAST AND SOUTH VIA SOUTHERN PACIFIC ROUTE.

SHASTA LINE.

Express trains leave Portland daily. South | North. 7:00 p. m. Leaves Portland Arrives 9:35 a. m. Albany Ar 6:22 a. m. 10:15 a. m. Ar San Francisco Lv 9:00 p. m.

Above trains stop only at following stations: North of Roseburg, Roseburg, Prineville, Woodburn, Salem, Albany, Tulelake, S. Elsie, Halsey, Harrisburg, Junction City, Irving, Roseburg.

ROSEBURG MAIL DAILY.

8:00 a. m. Lv Portland Ar 4:30 p. m. 12:30 p. m. Lv Albany Ar 12:00 a. m. 5:45 p. m. Ar Roseburg Lv 6:10 a. m.

WHEAT LOCAL, DAILY (EXCEPT SUNDAY).

4:00 p. m. Lv Portland Ar 9:30 a. m. 10:00 p. m. Lv Albany Ar 5:00 a. m.

LOCAL PASSENGER TRAINS DAILY (EXCEPT SUNDAY).

2:06 p. m. Lv Albany Ar 9:25 a. m. 3:25 p. m. Ar Lebanon Lv 8:40 a. m. 10:20 p. m. Ar Lebanon Ar 4:35 p. m.

Buffet Sleepers. SLEEPING CARS.

Recommendation of Second Class Passengers, attached to Express Train.

The West Side Division. GREEN PORTLAND AND CORVALLIS.

MAIL TRAIN DAILY (EXCEPT SUNDAY). 10:00 a. m. Lv Portland Ar 5:30 p. m. 12:30 p. m. Lv Albany Ar 12:00 a. m. 5:45 p. m. Ar Roseburg Lv 6:10 a. m.

EXPRESS TRAINS DAILY (EXCEPT SUNDAY).

4:00 p. m. Lv Portland Ar 9:30 a. m. 10:00 p. m. Lv Albany Ar 5:00 a. m. 7:30 p. m. Ar McMinnville Lv 5:45 a. m.

Through Tickets. TO ALL PORTS. EAST AND SOUTH.

For tickets and full information regarding rates, maps, etc., call on our agent at Portland, Ore.

are free from... The county is... The ocean steamer Truckee very often carries out 500,000 feet of lumber over the bar.

For hospitality the people of this county have no superiors. Strangers are always courteously received and generously entertained.

The red cedar is found in many places and is valuable for doors, windows and shingles. Insect pests of all kinds have failed to find this country. The salt sea breeze is against them.

Sheep-raising is profitable in the Nestsucca country. They are seldom bothered by coyotes or wolves.

Tiltamook is a well-kept center for grasses. All kinds grow most luxuriantly. The wild grasses on the hills are excellent feed for cattle, Timothy, red top, etc.

There are no traps here, and there are no families depending on charity for sustenance. People in this county live well and there are few idlers.

There are no regular first-class tourist's hotels on the beach yet, but excellent accommodations are offered for a limited number of boarders at the Bar View House near Garibaldi.

There is sure to be a great advance in the value of all kinds of real estate as soon as work on the railroad begins.

A company of local capitalists has secured a franchise to boom Tiltamook river. It has been cleared of obstructions and made safe for logging ditches.

It is easy to make a living in this country if you have enough means to enable you to own a small farm, or to improve a piece of government land.

The landscape here presents a green appearance throughout nearly all the year. The hills are not browned by a scorching summer sun or blackened by cold wintry blasts.

There are a few of the Tiltamook Indians yet in the vicinity of the bay, but they are fast dying out, and ere long there will be no full-blooded Indians left.

There are a few of the Tiltamook Indians yet in the vicinity of the bay, but they are fast dying out, and ere long there will be no full-blooded Indians left.

There are a few of the Tiltamook Indians yet in the vicinity of the bay, but they are fast dying out, and ere long there will be no full-blooded Indians left.

A community, like an individual, derives its prosperity from its resources. A man seeking a new home, naturally desires to establish himself among a people who have the present means or the possibilities of wealth.

The farming and agricultural resources of our county are elsewhere referred to in this issue, yet we can not but again insist upon their great and paramount importance.

Our timber is estimated at twenty billions of feet, an estimate probably entirely too small. This will yield to our citizens a stampage, at five cents per thousand feet, of \$1,000,000.

The cut above represents G. W. Fearnside's store buildings and residence. Mr. Fearnside is a pioneer in the merchandise business in Tiltamook, and has been here 37 years.

There are about 200 settlers on unsurveyed lands in the county, but the government is making additional surveys and before long it will all be open to entry under the U. S. land laws.

The total assessment last year (1896) was \$574,000. Considerable was added to this by the sheriff afterwards. When the assessment roll is completed this year, it will show an increase of nearly 100 per cent.

The rainfall in the winter season here is not so bad and oppressive as in the Willamette valley as there is an absence of foggy, murky days here. These used to be common.

It takes the small steam schooners six hours when the weather is favorable to make the trip from Tiltamook bay to Astoria.

There are no disastrous floods here, as the streams all have very deep channels except on the tide lands where the high tides and back waters rise so low that no damage is done.

There were only twenty six bridge licenses issued in the county during 1896. This is a sign of good times, especially as a young people are too busy to think of getting married.

The steamer Gen. Garfield does freighting and towing on the bay and ascends the streams as far as tide-water extends.

For the past fifteen years the firm of Cohn & Co. have been one of the leading business houses of Tiltamook County.

There is no use going to the Cascades or sierras for scenery. What is more quaint and picturesque than the arched rocks in the surf at Netarts, or 'old hawk' at the entrance of Nestsucca bay?

There is not a settlement in the county but what has its school house, no matter how remote or isolated the locality.

There is a great deal of fine, rich bottom land on the fall length of this river, and there are vast bodies of fine timber every where adjacent to it and the logging business will be carried on extensively on this stream.

There is a great deal of fine, rich bottom land on the fall length of this river, and there are vast bodies of fine timber every where adjacent to it and the logging business will be carried on extensively on this stream.

The Nestsucca country has a great number of fine streams and a large amount of timber. There is probably not a region in the Northwest that has more varied and important resources than Nestsucca.

Mr. E. K. Scovel contributes the following regarding Nestsucca: Of the resources of that portion of Nestsucca country that lies within Tiltamook county much has been written and but little said.

Half as many more would find employment in raising vegetables, hay, and with the usual number of women and children a population of about 5000, or more than as many again as there are in the entire county at present.

Polley Valley. This valley is really a tributary section to the Nestsucca river, and the valley has all the advantages and excellencies of Nestsucca proper, except it is smaller in area.

Miami. The head-waters of the Miami and Polley are near together, but the Miami empties into Tiltamook bay at Garibaldi.

Netarts will soon be the center of attraction for pleasure seekers in this county. The bay is about three miles long and is situated about five miles south of Cape Meares.

Netarts will soon be the center of attraction for pleasure seekers in this county. The bay is about three miles long and is situated about five miles south of Cape Meares.

Netarts will soon be the center of attraction for pleasure seekers in this county. The bay is about three miles long and is situated about five miles south of Cape Meares.

Netarts will soon be the center of attraction for pleasure seekers in this county. The bay is about three miles long and is situated about five miles south of Cape Meares.

Netarts will soon be the center of attraction for pleasure seekers in this county. The bay is about three miles long and is situated about five miles south of Cape Meares.

Netarts will soon be the center of attraction for pleasure seekers in this county. The bay is about three miles long and is situated about five miles south of Cape Meares.

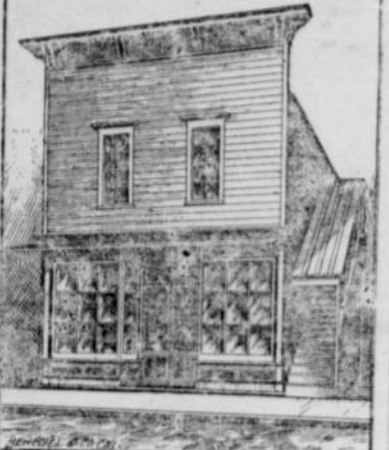
Netarts will soon be the center of attraction for pleasure seekers in this county. The bay is about three miles long and is situated about five miles south of Cape Meares.

Netarts will soon be the center of attraction for pleasure seekers in this county. The bay is about three miles long and is situated about five miles south of Cape Meares.

Netarts will soon be the center of attraction for pleasure seekers in this county. The bay is about three miles long and is situated about five miles south of Cape Meares.

Netarts will soon be the center of attraction for pleasure seekers in this county. The bay is about three miles long and is situated about five miles south of Cape Meares.

Netarts will soon be the center of attraction for pleasure seekers in this county. The bay is about three miles long and is situated about five miles south of Cape Meares.



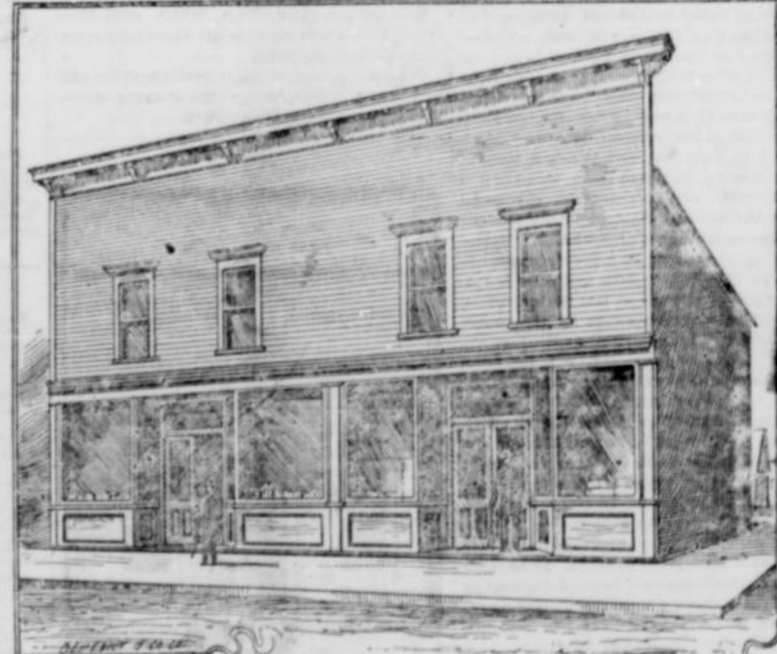
C. & E. THAYER'S BANK.



G. W. FEARNSIDE'S STORE.



W. H. REYNOLDS RESIDENCE.



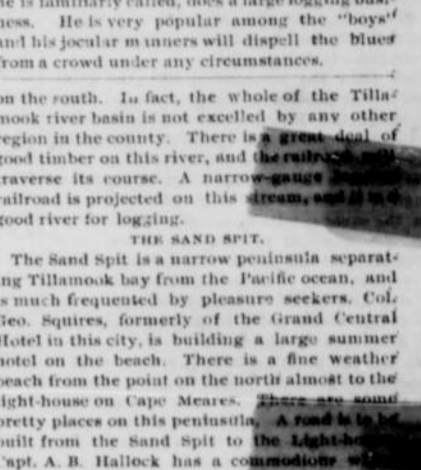
COHN & CO'S STORE.



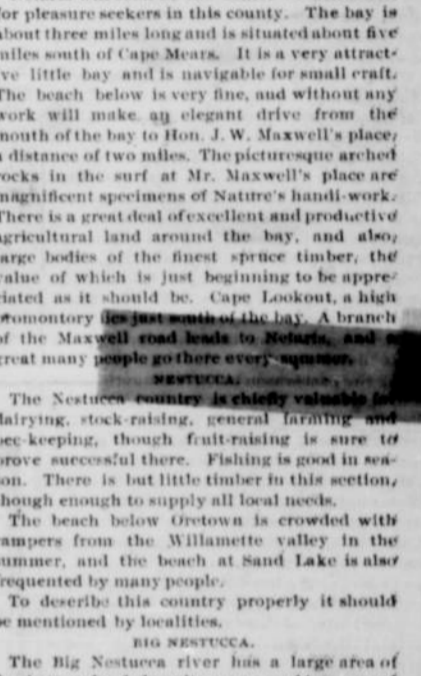
A. F. WILSON'S RESIDENCE.



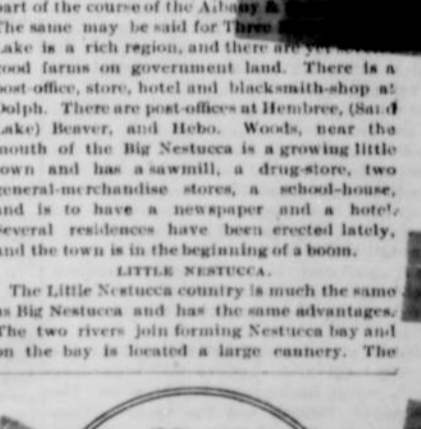
D. C. BOWERS' RESIDENCE.



THE SAND PIT.



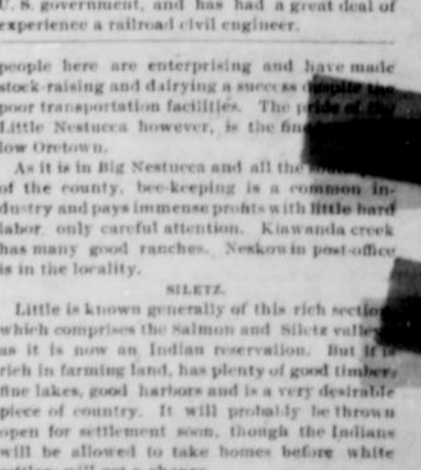
NETARTS.



LITTLE NESTSUCCA.



A. F. WILSON'S RESIDENCE.



SILETZ.