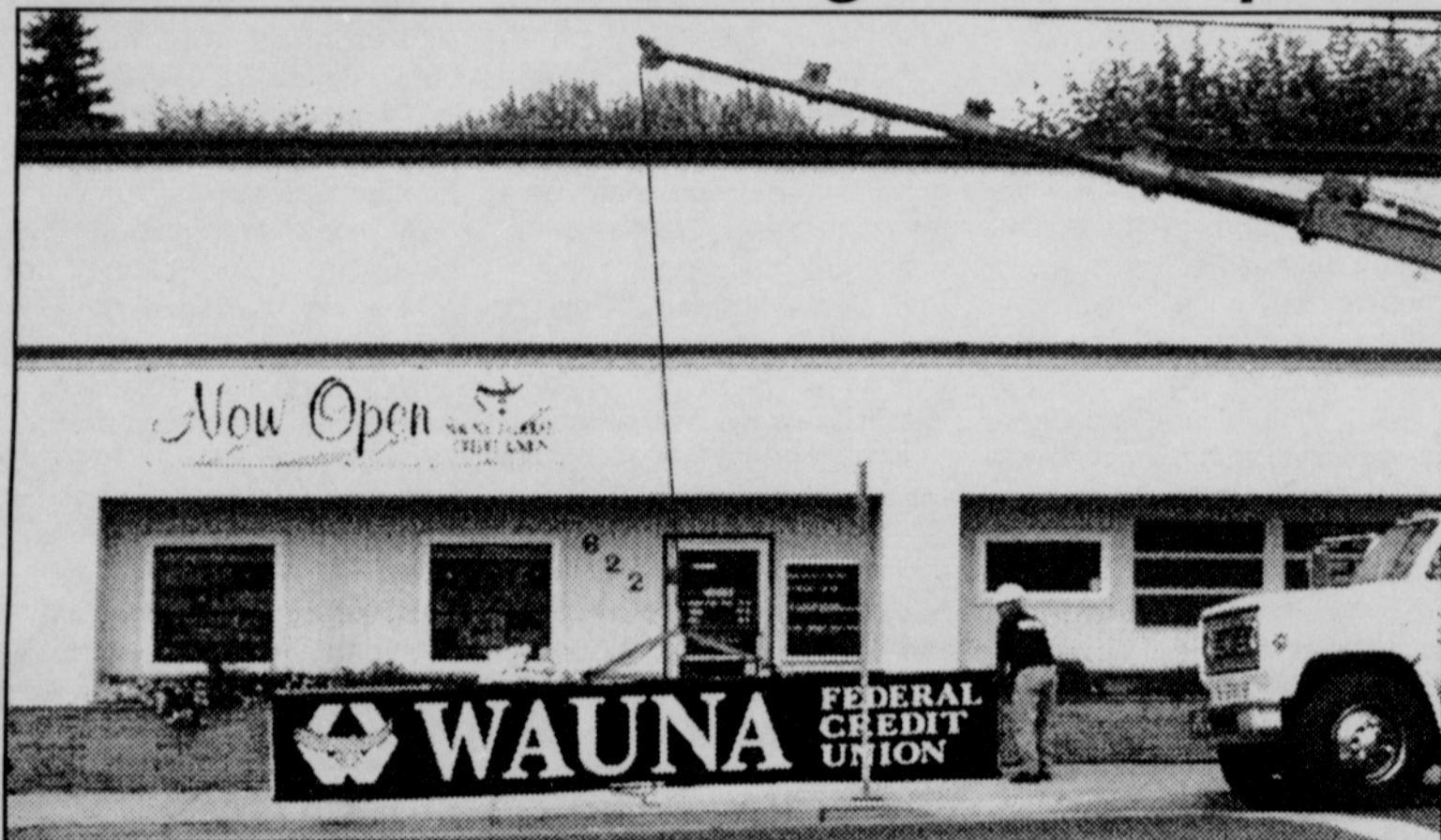


Business Notes

New Credit Union sign now in place **Mist Fire Chief Dave Crawford completes national training course**



With a sparkling new sign, shown here during installation, the presence of Wauna Federal Credit Union has become more apparent in the building that formerly housed the Vernonia Federal Credit Union. Still to come is an ATM that will be available 24 hours.

Hyde is guest speaker at local Republican picnic

The Columbia County Republican Party will hold a summer potluck picnic in Vernonia's Anderson Park by the beautiful Nehalem River on Saturday, August 23, beginning at 2:00 p.m. Speakers will follow the meal. Drinks will be provided.

County Commissioner Tony Hyde will speak on local issues and answer questions. Jason Meshell will discuss running against David Wu.

For more information, call Mike and Pat Powell at 503-728-3548, or Bob and Nancy

Tosh at 503-728-3583.

Update on Lewis & Clark Bridge

The full nighttime closures of the Lewis and Clark Bridge scheduled for August 18-22 were canceled because WSDOT is waiting for delivery and installation of new materials and equipment needed for deck panel replacement. This will allow work to continue using the recently redesigned process.

Last Sunday's 12-hour extended closure did not go as planned due to mechanical problems with the crane system that transports and lowers the deck panels, so crews were unable to replace the panel. Crews will attempt it again during another extended nighttime closure.

The next scheduled full nighttime closure will be Sunday, August 24, starting no earlier than 5:30 p.m., with the bridge reopening at 5:30 a.m. Monday, August 25. The last extended closure has not yet been scheduled, but will take place on a Sunday night. The public will receive at least two weeks notice when this extended closure is scheduled.

The extended nighttime full closures are necessary for crews to remove and replace three deck panels located next to two expansion joints on the bridge. These panels are attached to the deck in a more complex way than the other panels and require more time to replace.

During full nighttime closures, the bridge is closed to all traffic, including bicycles and pedestrians. During single lane closures, flaggers guide traffic, one direction at a time, with a maximum delay of 20 minutes.

To obtain a full schedule showing upcoming closures of the bridge, use numbers below.

Contact numbers for Lewis & Clark Bridge

- Toll Free Lewis & Clark Bridge Deck Replacement Project Hotline: 1-866-427-4630

- Project Web Page: (Follow the Project Update link to the monthly calendar)

www.wsdot.wa.gov/projects/lewisclarkbridge

- Lewis & Clark Bridge Deck Replacement Project E-mail: lewisclarkbridge@wsdot.wa.gov

Fire Chief David F. Crawford of the Mist-Birkenfeld Rural Fire Protection District completed the National Fire Academy's Leading Community Risk Reduction in Emmitsburg, Maryland, on August 15.

As part of the Executive Fire Officers Program, this course provides senior fire executives with strategic perspectives on comprehensive risk management with an emphasis on fire prevention.

Course participants are required to formulate a comprehensive risk-reduction plan using a simulated environment for risk to be assessed and mitigated.

Through the programs offered by the United States Fire Administration's National Fire Academy and the Emergency Management Institute, the Federal Emergency Management Agency (FEMA) promotes the

professional development of our nation's emergency professionals.

FEMA's training goals are to enhance the capability at the community level, and to better prepare for emergencies by improving technical competence and public policy perspective of key emergency managers and staff.

County seeks person for solid waste panel

The Columbia County Board of Commissioners is seeking applicants for appointment as public representative on the County Solid Waste Advisory Committee.

Interested citizens may call the Board of Commissioners office at 503-397-4322 for more information.

Applications must be received by September 30, 2003.

SOIL AMENDMENT!*

***Soil (n.)** 1. the portion of the earth's surface consisting of disintegrated rock and humus.

***Amendment (n.)** 1. the act of amending

2. a change made by correction, addition or deletion

A horse by any other name:

"Boardman's Best" "Tillamook Topsoil" "Super Grow"

➔ is still a horse!

We Have Soil Amendment Products To Suit Your Every Need...

2 Way Blend

Consisting of Steer Compost & Sandy Loam.

Excellent for Lawns & Gardens

\$19.00 yd. or
\$120.00 unit

3 Way Mix

Consisting of Sand, Compost & Fine Bark

Excellent for Shrubs & Flower Beds

\$19.00 yd. or
\$120.00 unit

Canby Blend

Consisting of Fine Compost, Topsoil, Sand & Mushroom Compost

Excellent for Gardens & Flower Beds

\$21.00 yd. or
\$122.00 unit

*above prices do not include delivery

We have a huge selection of decorative rock, concrete products, flagstone, lawn ornaments & barkdust

Come on in and kick a rock or two!

Open: Mon-Fri 7 am - 4:30 pm, Sat 8 am - 4:30 pm, Sun 10 am - 4 pm

Scappoose Sand & Gravel Co.

503-543-8821