

# Brewer is Columbia County Logger of the Year for second year

For the second year in a row, Gregg Brewer of Taylorville won the All-Around Logger Title at the 2003 Vernonia Logging Show. He will be awarded a gold-plated axe at the beginning of the 2003 show. The golden axe is sponsored by Wilcox & Flegel of Longview, Washington.

Three competitors kept Brewer on his toes all day - Matt Samuelson of Elsie, earning 25 points, Jeremy Chalk of St. Helens, earning 18 points and Jim Horn of Longview, who earned 16 points, to Brewer's 31 points.

Brewer also won the title of 2003 Columbia County Logger of the Year, by accumulating the most points at logging shows in Clatskanie, Rainier, St. Helens and Vernonia. For this title, Brewer took home a new Husqvarna chain saw sponsored by Triple S Saw Shop of Vernonia and the four county shows.

Unlimited Bucking: Andrews/Pellham, Pellham/Horn, Flatz/Horn.

Choker Setting: Jeremy Chalk, Matt Samuelson, Marvin Johnson.

Women's Bucking: Mary Ann Martin, Margie Ragsdale.

Kids' Axe Throw: Ryan Flatz, Cody Ford, Derek Berezo.

Pole Walk & Snip: Gregg Brewer, Kennedy Ragsdale, Matt Samuelson.

Steeple Chase: Matt Samuelson, Gregg Brewer, Jim Horn.

Pole Fall: Denny Flatz, Jim Horn, Jeremy Chalk.

Boom Stick Run: Jeremy Chalk, Matt Samuelson, Gregg Brewer.

Pole Walk: Gregg Brewer, Jim Horn.

Women's Hard Hat Toss: Mary Ann Martin, Alisha Reaney, Margie Ragsdale.

Kids' Choker Setting: Jeremy Martin, Cody Ford, Derek Berezo.

## Placings for '03 Vernonia show

Placings for each event in the 2003 Vernonia show are as follows:

Axe Throw: Matt Samuelson, Gregg Brewer, Jim Horn.

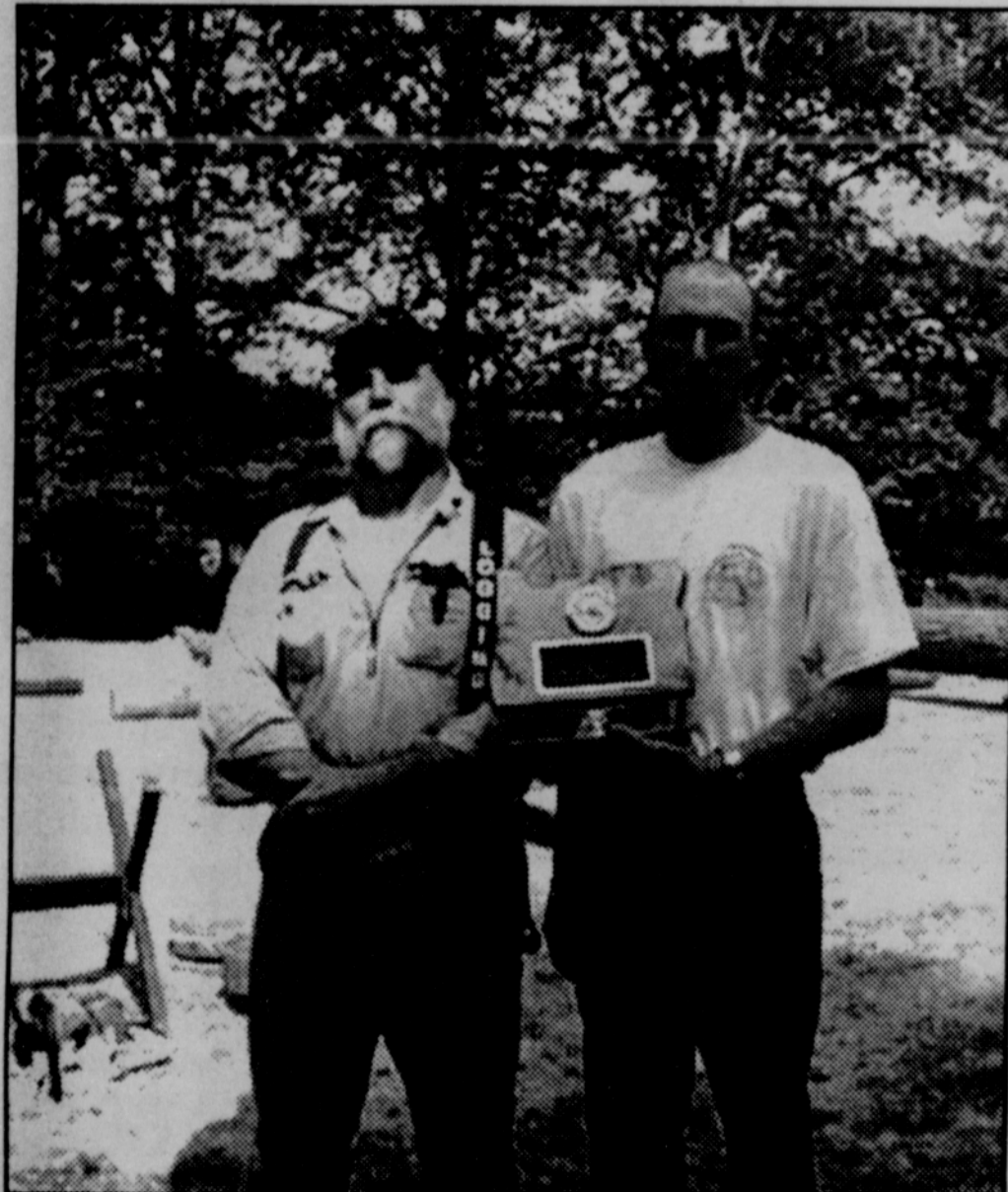
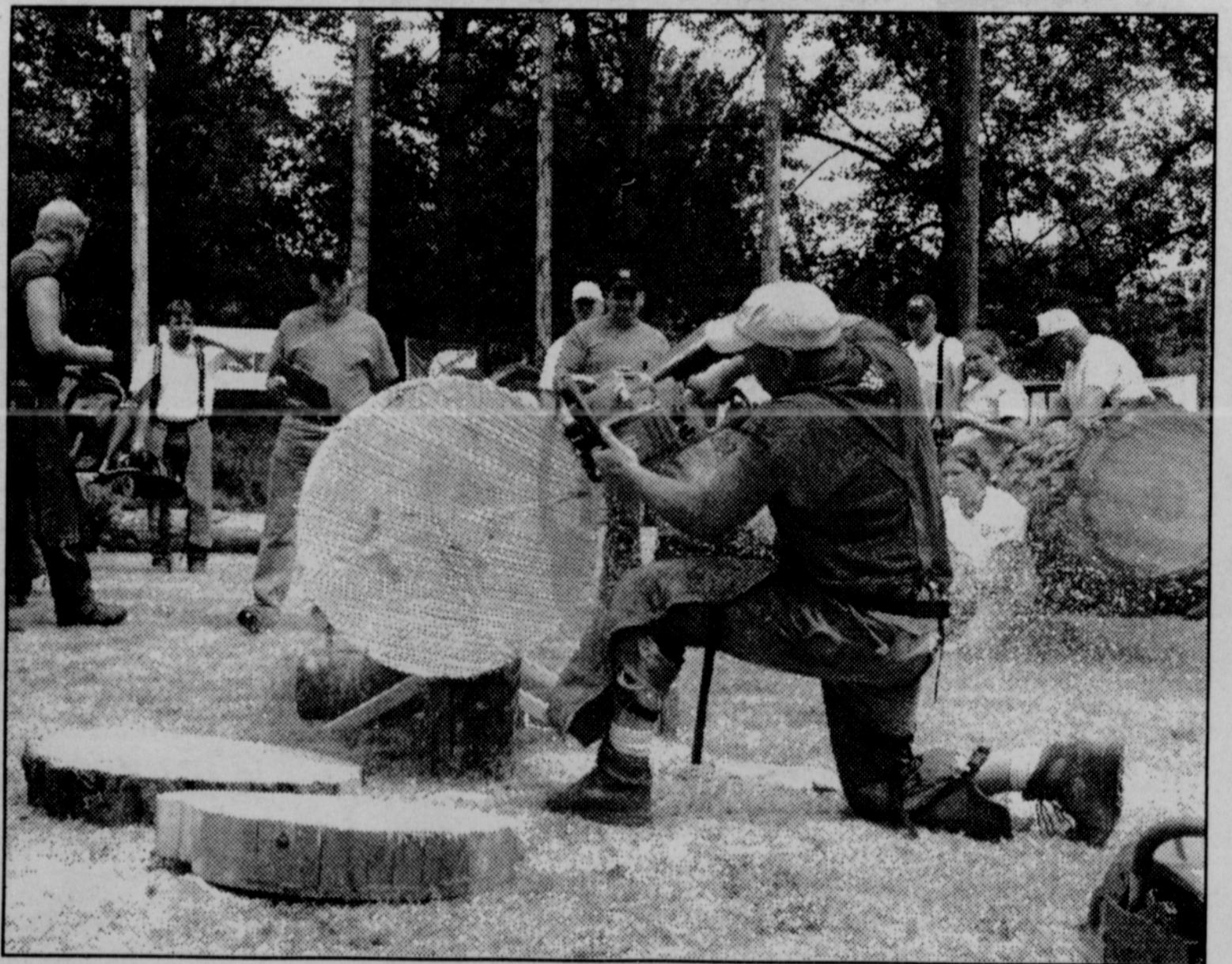
Working Saw 4-5 ci: Gregg Brewer, Matt Samuelson, Rick Kyser.

Working Saw 5-6 ci: Gregg Brewer, Rick Kyser, Denny Flatz.

## Sword award goes to Shane Holum

Shane Holum of Clatskanie, was honored with the Max Sword Memorial Sportsmanship award for 2003.

Officials of the Jamboree Logging Show select the winner of the sportsmanship award.



Top: Gregg Brewer receives trophy for Columbia County Logger of the Year. Above: Jim Horn with his unlimited saw. Left: Bill Woolsey presents Shane Holum with the Max Sword Memorial Award.

Next page - Top left: Pole Walk & Snip requires balance, agility & strength. Top right: A different view of pole falling. Center left: Working saw 4-5 ci. Center right: Axe throw. Bottom left: Steeple Chase looks simple but often leaves competitors frustrated. Bottom right: Unlimited slices through.