

**Introducing
the "Team"**



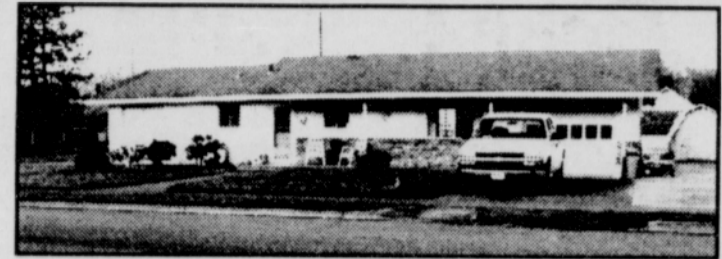
Rose Patty Diane

Century 21 All Professionals Real Estate
17455 SW Farmington Rd., Ste 25A, Beaverton, OR 97007
Business: 503-259-2100 • Fax: 503-259-0533

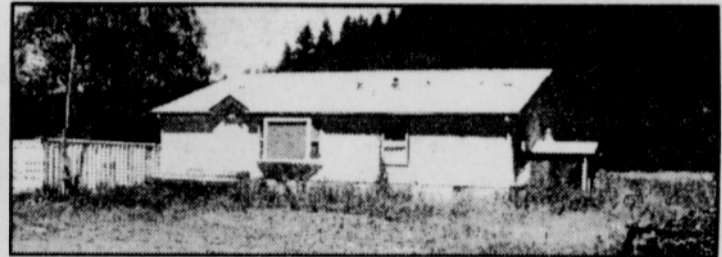
Your Local Vernonia Specialists with Integrity

Patty Fogel, Associate Broker, Dir: 503-704-1381
Hm Ofc: 503-429-1305
Rose Foster, Associate Broker, Hm Ofc: 503-429-3902
Diane Ruby, Associate Broker, Dir: 503-720-3090
Hm Ofc: 503-429-4671

**Stop by our Century 21 Booth during
Jamboree on Saturday, Aug 3rd (next to
Beer Garden) for Free Gifts & Prizes!**



921 State Avenue – Where else but in Vernonia! Very affordable & move-in ready 4BD, 2BA, 1320 SF ranch home! Arched entries! Detailed accents! Woodstove on custom hearth! Ceiling fan! French doors! All on a 100x100 level corner lot! \$129,900 Call Patty 503-704-1381



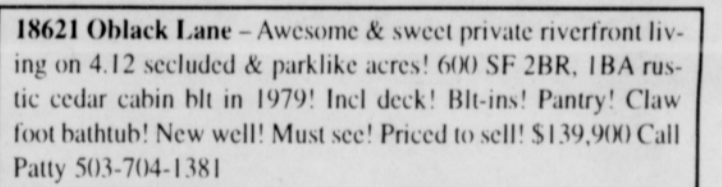
61786 Nehalem Hwy. N – Potential horse property! 23.40 acres! Includes beautiful 1620 SF 3BR, 2BA tri-wd MF hm! Vaulted ceilings! Coved entries! Must see to appreciate! \$259,900 Call Patty 503-704-1381



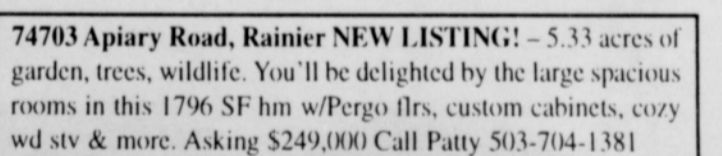
12701 Keasey Rd. – Ideal for hunters or nature lovers! 6.02 true country riverfront acres + 1050 SF 2BR, 2BA sing.wd MF hm! Newly planted cedar & fir seedlings! Woodstv! Kit nook! Garden tub! 20x46 shop w/cement flr! \$189,900 Call Patty 503-704-1381



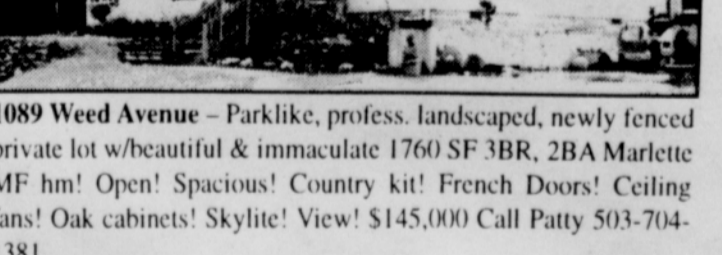
1194 Roseview Heights – Beautiful & move-in ready 3BR, 2BA, 1152 SF dbl-wde MF hm on private .43 acre lot! New cabinets, pergo floors! New paint! Blt-ins! Seasonal Creek! Wonderful location! \$124,900 Call Bonnie 503-888-6355



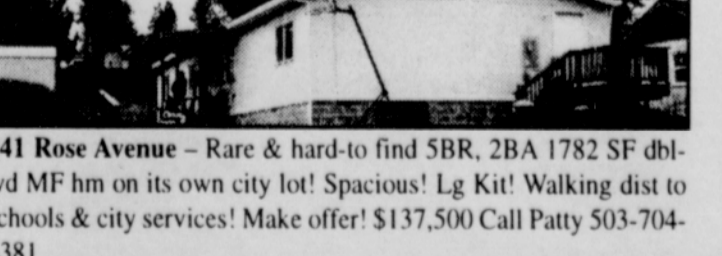
18621 Oblack Lane – Awesome & sweet private riverfront living on 4.12 secluded & parklike acres! 600 SF 2BR, 1BA rustic cedar cabin blt in 1979! Incl deck! Blt-ins! Pantry! Claw foot bathtub! New well! Must see! Priced to sell! \$139,900 Call Patty 503-704-1381



74703 Apiary Road, Rainier NEW LISTING! – 5.33 acres of garden, trees, wildlife. You'll be delighted by the large spacious rooms in this 1796 SF hm w/Pergo flrs, custom cabinets, cozy wd stv & more. Asking \$249,000 Call Patty 503-704-1381



1089 Weed Avenue – Parklike, profess. landscaped, newly fenced private lot w/beautiful & immaculate 1760 SF 3BR, 2BA Marlette MF hm! Open! Spacious! Country kit! French Doors! Ceiling fans! Oak cabinets! Skylite! View! \$145,000 Call Patty 503-704-1381



841 Rose Avenue – Rare & hard-to find 5BR, 2BA 1782 SF dbl-wd MF hm on its own city lot! Spacious! Lg Kit! Walking dist to schools & city services! Make offer! \$137,500 Call Patty 503-704-1381



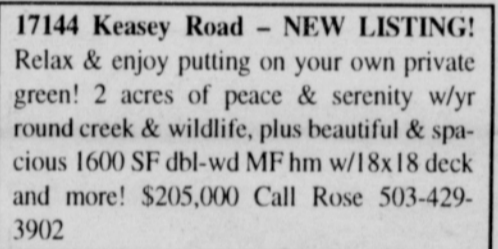
875 Madison Ave. – Delightful 1900s cottage filled with old fashion charm & character! Covered front porch! Covered back deck! 2BR, 1BA 1600 SF incl. basement for hobbies? All appliances stay! Move-in ready. \$124,900 Call Patty 503-704-1381



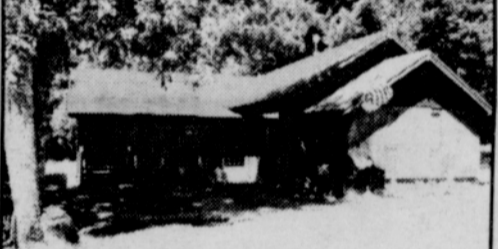
1050 Riverside Drive – Priced to sell! Riverfront .89 Jr. acre lot + 1626 SF 2BR, 1BA remodded hm! Oak cabinets! Wainscot! Ceiling Fan! RV parking! Deck! Fenced! Private! Country living in city limits! \$144,900 Call Patty 503-704-1381



56959 Nehalem Hwy., S. – Unique dome home! Very roomy & open! 2BR, 2BA! 2400 SF! Cedar Sided! Hot tub off master in its own building on wrap-around deck! One of a kind home on 10.60 beautiful acres! Must see! \$325,000 Call Richard 503-307-5857



17144 Keasey Road – NEW LISTING! Relax & enjoy putting on your own private green! 2 acres of peace & serenity w/yr round creek & wildlife, plus beautiful & spacious 1600 SF dbl-wd MF hm w/18x18 deck and more! \$205,000 Call Rose 503-429-3902



226 "C" Street – Charming 2BR 1BA, 1570 SF ranch hm on 3 city lots! 150x100! Hm incl Den! Country kit! Gas stove in DR! Large rms! 20x40 shop! Motivated sellers, must see! \$146,500 Call Nikki 503-539-8390



174 "C" Street – Great starter or investment! 2BR 1BA 960 SF bungalow on 100x150 dividable lot! (check w/City!) Woodstove! Lg kit! Make offer \$89,000 Call Diane 503-720-3090



1125 Ruth Avenue – NEW ON MARKET! Priced to sell! Beautiful & open 1450 SF 3BR, 2BA home. Blt 1997. Must see all this home offers. \$129,900 Call Patty 503-704-1381



50 "B" Street – Country living in City limits! 1780 SF 2BR, 2BA rustic hm on 1.75 AC (15 lots)! Private! Secluded! Parklike setting! Trees! Wildlife! Hm incl. free-standing FP! Vaulted Ceilings! Loft! True lodge feeling! Prop may be divided! Check w/City. Make offer! \$275,000 Call Patty 503-704-1381



379 Arkansas – Rustic country living in City limits! 1820 SF 3BR, 2BA, LRw/lg stone FP, vaulted ceilings! Exposed beams! Spacious country kitchen! Woodstove + more! Priced well under assessed value! \$129,900 Call Patty 503-704-1381

DIRT FOR SALE

Call Patty 503-704-1381

2nd Ave. & Cougar – Country living in City limits! .68 buildable view acre for your dream home! All city services available! Contract terms available! \$68,000

2nd Ave. past Clatsop – Build your home & enjoy the peace, quiet & wildlife on this extra lg buildable city lot complete w/country atmosphere! Make offer \$40,000

Riverside Drive – Hard-to-find affordable buildable riverfront lot w/all city services available! Make offer \$34,900

18619 Oblack Lane – Awesome country living! Relax & listen to the river from this quiet & secluded, parklike 4.52 acres! \$109,000

Elsie/Seaside – Elsie Cemetery Road/Hwy 26 – 38.09 buildable acres! Nestled in Coast Range! Private & secluded tree farm! Marketable timber! Cruised 1989! 45 min to Hi-Tech Hillsboro...30 min to beach! Make offer \$244,900



MORTGAGE MARKET INC.
an FIBC company

Dreams Approved Daily™

100% Financing Program

for Information, call Char Edwards 503-968-3115