

Vernonia Realty

Phone: 503-429-6203

Toll Free 1-800-6203 • Fax 503-429-2770

Associate Broker: Carol Ostrander, GRI, 429-6425

Sales Associates: Ken & Helen Bateman, 429-1032 • Nancy Dailey, 429-3703 • Nancy Santoro, 429-7013



& Insurance Center

953 Bridge St, Vernonia, OR 97064

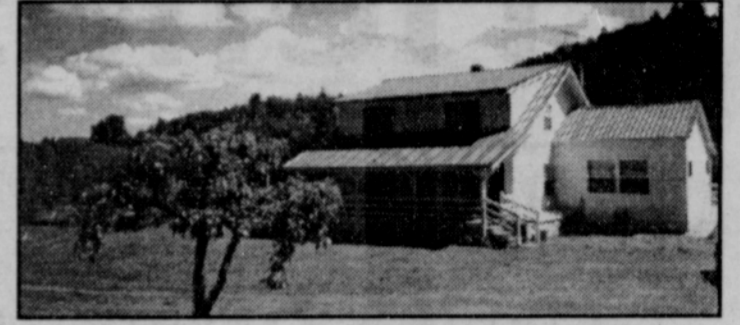
Vernonia's locally owned & operated
Real Estate and Insurance Company



\$440,000 VERY SECLUDED, ONE OF A KIND fabulous marble, hdwd & tile deluxe custom-blt 2 level, 4BD, 3BA cedar & stone home. Barn, corral, nice 2-story studio/shop on 5+ AC. Hwy 47 frontage just minutes to Hwy 26.



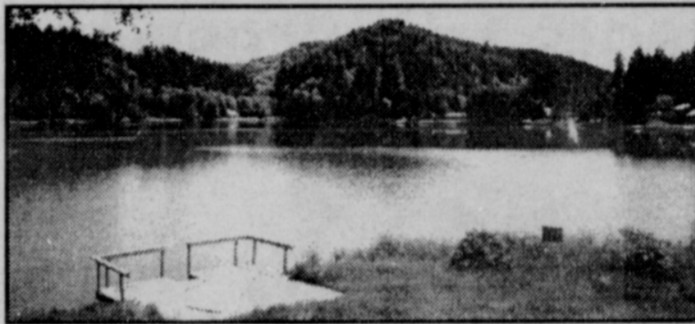
\$367,000 EXCEPTIONAL HOME, FANTASTIC 20+ AC. Over 3600 SF, 3-level, 3BD, 3.5BA contemporary w/2 gas fireplaces, security syst. & auto gate. Storage galore, Heated 48x31 shop w/1/2BA.



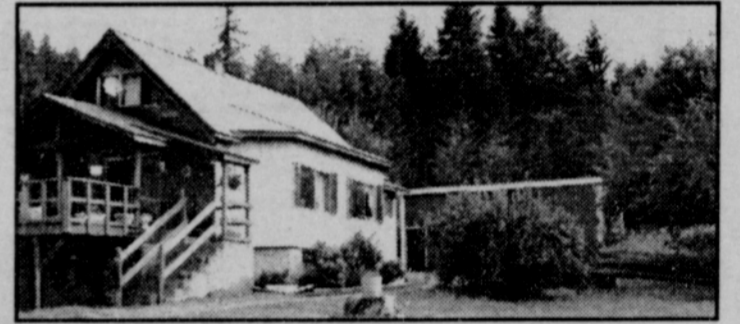
\$297,500 AWESOME RIVERFRONT HORSE PROPERTY! 4BR, 2BA farmhome w/lg. country kitchen, bonus rm, 36x40 2-story shop, 40x84 barn, river frontage on 13.88 AC. Add'l 10+AC available for package price of \$335,000.



\$274,500 EXECUTIVE MINI-ESTATE 3BD, 2BA home w/pond, horse stalls, corral, huge deck, 6-seat spa, 40x60 shop w/220 wiring, gas fireplace. Landscaped 1.41 AC in prestigious Heather Park!



\$199,900 A RARE FIND! Lakefront property at prestigious 75 acre Fishhawk Lake! 5BD, 3BA, 3652 SF home w/3-car att. garage, pellet stove and wood stove, family room w/dance floor, country kitchen.



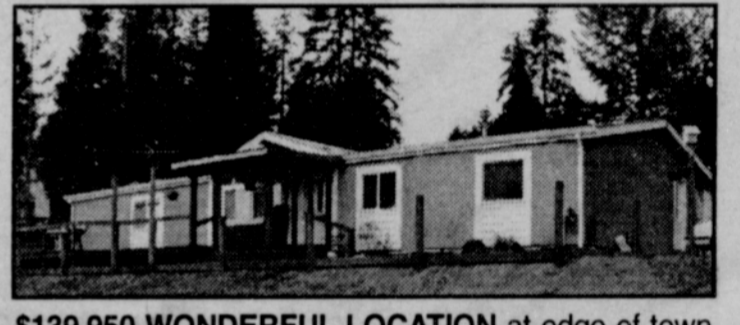
\$219,500 NICELY REMODELED 3-LEVEL FARM HOUSE on 15.4 AC. 4BD, 1BA, Large deck in front, 30x30 barn and 25x31 shop. Beautiful setting w/Douglas fir and fruit trees, some pasture.



\$199,500 WONDERFUL LIGHT & BRIGHT open plan w/lg custom kitchen, 3BR, 2BA on 2+AC. Fireplace, gas heat, city water. Small hair salon in back of dbl garage. Country living in town!



\$154,900 PEACEFUL SURROUNDINGS OFF THE BEATEN PATH. Immaculate 1998 3BD, 2BA & den manu. home. 24x24 shop w/14' door, on .98 AC on spectacular Rock Creek. Many extras!



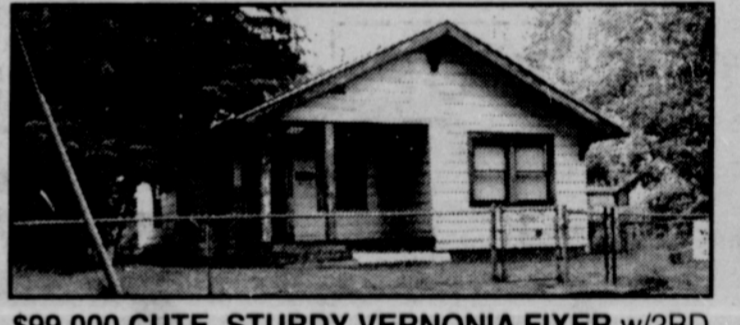
\$139,950 WONDERFUL LOCATION at edge of town w/view! 6-seat cal spa stays on large deck! 4BD, 2BA, 1782 SF manuf home has skylights, kitchen nook, fruit trees, master suite & more. Priced to sell!



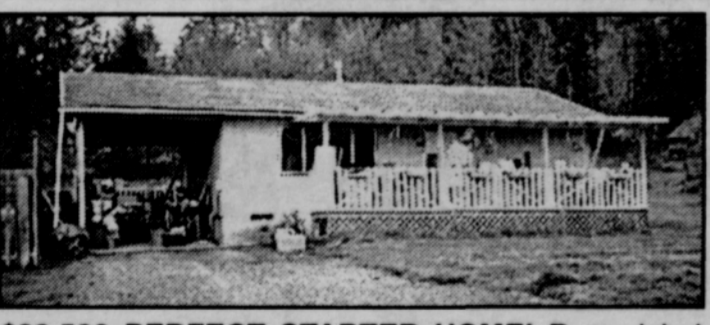
\$127,000 PARK-LIKE .55 AC w/remodeled 2BD cottage, Nehalem River frontage, garden area, detached garage w/shop and tall cedar trees.



\$102,900 CLOSE TO VERNONIA LAKE! Remodeled 3BR, 1BA home w/country kitchen, large deck, garden area, RV parking, fenced yard on 2 City lots.



\$99,000 CUTE, STURDY VERNONIA FIXER w/2BD on 3 City lots in nice, high area. Room for another home.



\$89,500 PERFECT STARTER HOME! Remodeled 2BD all gas home w/all appliances. Large covered porch and car port.



\$89,500 PRICED BELOW APPRAISAL 2BD, 2BA manuf home w/nice floor plan, gas fireplace & heat, fenced yard, 100x100 lot in private, wooded setting.



\$76,500 1BD, 1BA BUNGALOW w/9x12 bonus room, covered front porch, lg. deck. Easy walk to schools and downtown core.

More Homes and Building Sites

\$185,000 - COUNTRY LIVING on 3 tax lots. 2BD remodeled cottage, Nehalem River frontage, small barn & shop. Possible building sites w/County permits.

\$149,900 - BEST BUY! 3BD, 2BA ranch style home w/bonus room + possible 4th BD in daylight basement. Fireplace, gas heat, two garages.

\$139,500 - HIGH IN ROSEVIEW HEIGHTS, this 3BD, 2BA, spacious dble-wide has big family room & 2 level deck overlooking large yard.

\$129,500 - EXCEPTIONAL RIVERFRONT PROPERTY

in town. 4BD, 2BA home w/country kitchen, gas fireplace, extra room for office or? Easy walk to schools.
\$125,000 - CEDAR-SIDED CUTIE! 2BD, 1BA home w/separate cottage on .65 AC nestled along the East Fork of the Nehalem River.

\$99,950 - VERY SPECIAL 3 BD, 1 BA, 1200 SF home. 26x32 shop and oversized corner lot. Gas furnace, vinyl siding, wood burning fireplace insert.

\$127,900 - 6.4 BUILDABLE ACRES. Nehalem River frontage, new well, septic approved, close to golf

course.
\$94,500 - 2.12 COUNTRY ACRES on Stoney Point Rd. Small creek, septic approval furnished by seller.

\$65,000 - JUST LIKE COUNTRY! 1.5+AC w/Nehalem River frontage. All City services available.

\$49,950 - SERENE BUILDING SITE, pristine Rock Creek frontage, community water system

\$40,000 - FOUR CITY LOTS, 640 SF truck shop, City water.

\$24,500 - HIGH & DRY 50x100 treed lot, great for stick built or manuf. home.



Need health or life insurance, or insurance for your auto, home, boat, RV, business, log truck or logging equipment? Call us! As your Independent Insurance Agents we represent many companies and can offer a variety of protection for you, your family and your business. We may be able to save you some money, too. Call or drop by for your free, no obligation quote.
Ken & Helen Bateman, Agents