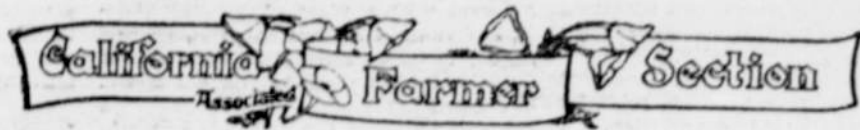


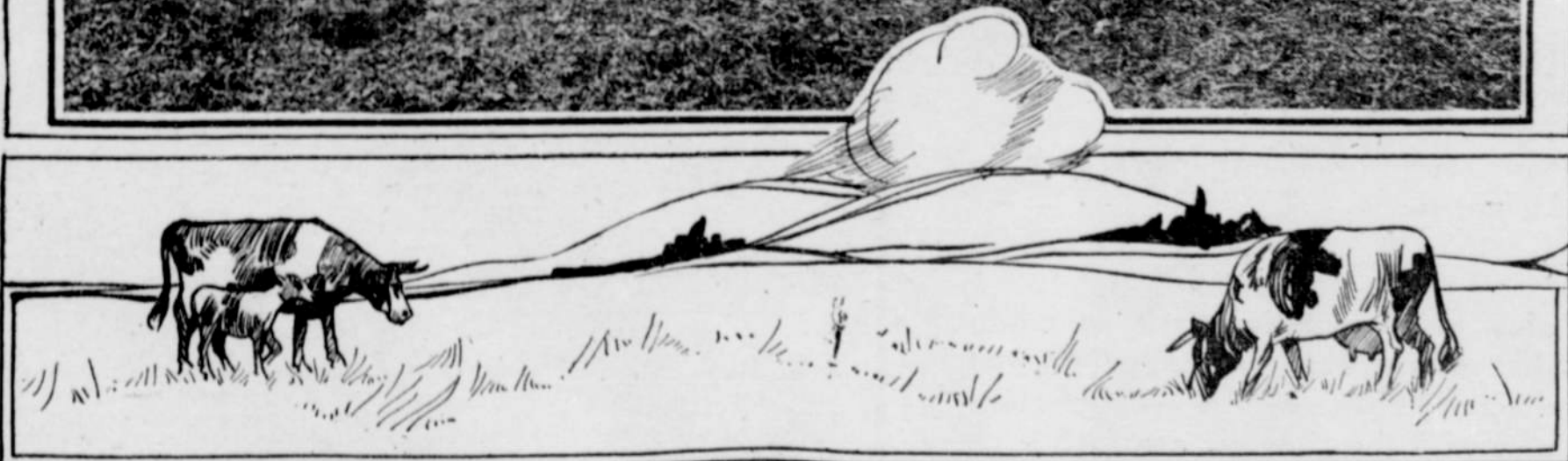
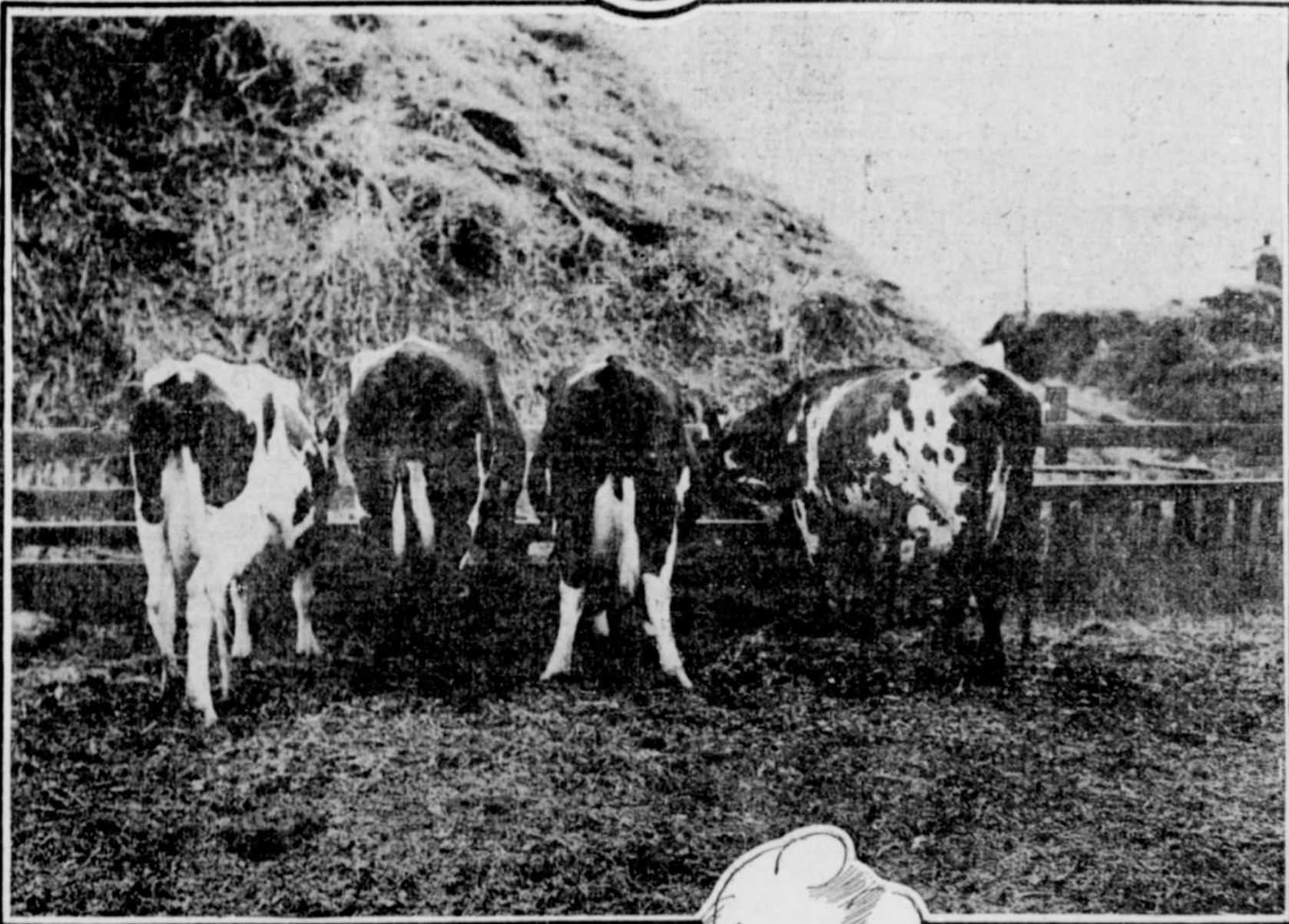
KLAMATH REPUBLICAN



KLAMATH FALLS, KLAMATH COUNTY, OREGON, THURSDAY, JANUARY 15, 1914.

FARM SECTION

HIGHLY BRED AND WELL-KEPT HOLSTEINS



The picture above, showing four fine Holstein cows feeding at the hayrick and the growing stack of hay beyond the fence, are evidences of a prosperous and well-managed farm. It is easy to believe that all departments of a farm might be kept up to the degree of excellence shown in the picture by the use of proper methods and avoiding the rock that wrecks many a farm enterprise which is "too large an acreage for best results." We are indebted to the Patterson Irrigated Farms Co. for loan of photo.