

Humor and Philosophy

By DUNCAN H. SMITH

PERT PARAGRAPHS.

A bore is a man who isn't in the least interested in what you are enthusiastic over, but is enthusiastic over some thing for which you don't care a straw.

When it comes to American hettresses of course the woman pays every time.



Taking the conceit out of a man ought to be synonymous with putting some sense in him, but it isn't.

The only difference is that some of us are a little more indirect and tactful than others in trying to get the best of the other fellow.

The man who has a pressing engagement should not complain if in the end he finds he has been squeezed dry.

Any kind of ready to eat living looks good to the perfectly harmless chap who has to make his own living.

Probably the reason why there are so many unhappy marriages is because the girl does not think that the young man as husband lives up to all that is implied in a solitary engagement ring.

Keeping still is merely an imitation of being wise and sometimes is just as effective as the real thing.

A girl who treats her suitors badly ought to be severely dealt with for contempt of court.

Primitive Aerial Navigation.
The cyclone season is at hand.
And very soon throughout the land
The natives will be treated to
As fine a breeze as ever blew,
And they will see, to their surprise,
Their household treasures in the skies.

A cloud no larger than a hand
Will very suddenly expand
Until it looks as large, we'll say,
As some account you cannot pay.
And its playful onward flight
Will pick up everything in sight.

The barn before this master grip
Will from its firm foundations slip
And like a modern airship will
Go sailing over yonder hill
And, evolving wide and neat,
Will settle in a field of wheat.

To follow in its train of course
Will be a buggy and a horse,
Some cattle and a drove of swine
And other critters in that line.
To come down scattered far and wide
As with the cyclone's whim they ride.

The cyclone is a playful sprite,
For things inanimate take flight
When it displays the busy sign
And sends its forces down the line.
You never know what it will do,
So do not let it play with you.



Met Some Hard Words.

"How did he come out in the civil service examination?"
"He had a bad spell."

Daybreak.
The silvery gleam
Of the rippling stream
The halting eye caresses,
And the golden ray
Of the waking day
The joy of life confesses.

But the morning bright
Brings no delight,
Though the joys of morn are thronging,
For they find me far
From the place you are,
And the day grows pale with longing.

Possibilities.
"Got a recommendation from your last place?"
"Sorry to say I have not."
"Why not?"
"I don't know. When I left the boss was running after me, perhaps to give me one, but I did not wait to see."

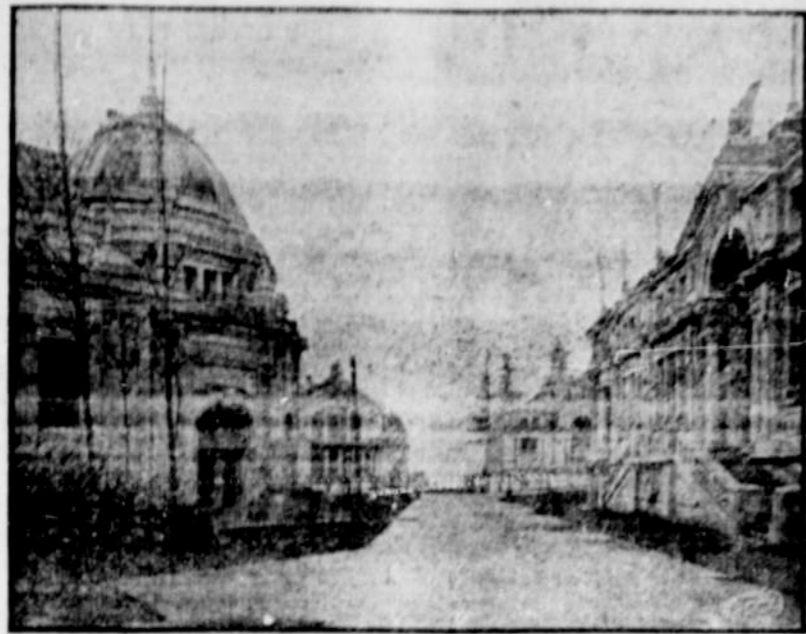
Depended.
"Doctr, what shall I do to remove this superfluous flesh?"
"Exercise."
"What form—hoing in the garden or golf?"
"How much money have you got?"

Sounded Good.
"You are all run down."
"What shall I do?"
"Try nature's remedies."
"Would going to the ball game do?"

Did What He Could.
"Does he lose much at poker?"
"Not a great deal. You know, he only has a small income."

Unclassified.
No, building castles in the air
May not be architectural
Nor should, nor would you swear
That it was intellectual.

Just a Guess.
"Her fee is her fortune."
"What's her business—rat exterminator?"



LOOKING DOWN YUKON AVENUE.

One of the most traveled highways of the Alaska-Yukon-Pacific Exposition will be the street which has been given the name of Yukon Avenue. Yukon Avenue makes its way across the exposition grounds from west to east, and the ends are represented by Klondike Circle near the entrance, and Nome Circle on which fronts the classic Forestry building. It crosses the roaring Cascades on oriental bridges of handsome design, and from its central part the buildings of Hawaii and Alaska, backed by the enormous federal structure, are directly to the north.

Just to the west of Klondike Circle the Pay Streak winds in a general direction from north to south, and at the eastern end the land gives way precipitously to the shores of Lake Washington. It is on this beautiful shore of the lake the natural amphitheatre is located, and nature has so quaintly formed this delightful spot, that small effort has been required of man to transform it into as perfect an exhibition place as is possible. Its curving, sloping sides complete a semi-circle, and from its tiers of towering seats 30,000 spectators may witness the entertainments with no possibilities of occupying a single undesirable seat.

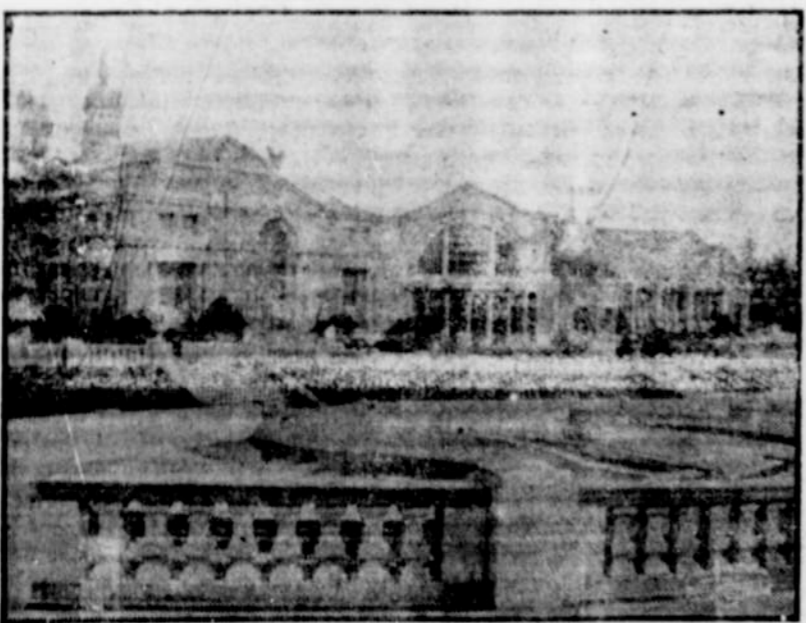
A wonderful variety of architectural display is shown by the many buildings through which Yukon Avenue passes, and during its course the visitor passes from man-made monuments through parts of magnificent forests whose grandeur has never been marred by the destructive craft of Mammon's disciples. From every side the line of horizon is defined by mountains whose lines are delineated in perpetual snow, and stretching away as far as the eye can travel rest the waters of Puget Sound.



THE AUDITORIUM.

The Alaska-Yukon-Pacific Exposition at Seattle, occupying 250 acres of the campus of the University of Washington, will result in benefits for Washington's seat of learning that the University could not have hoped to secure in many years, had not the great fair of 1909 been planned. So the exposition that will exploit Alaska, Hawaii and the Philippines and emphasize the importance of the growing trade with the Orient will leave, after its gates have closed, a large number of permanent structures to constantly remind the people of the Northwest of the Alaska-Yukon-Pacific Exposition and the place it will occupy in the history of the Pacific as the medium through which one-half of the world was brought in such close touch with the other and a tremendous impetus to commercial intercourse given.

Seven buildings on the exposition grounds will be left for use of the University and the auditorium, one of the finest of this group, cost the State of Washington more than \$300,000. While the exposition is in progress this building will be used for conventions, congresses and conferences, and its hundreds of seats were in place and the building turned over to the exposition management three months before the opening date of the fair.



ORIENTAL PALACE AND MANUFACTURERS BUILDING.

The Palace of Oriental Exhibits and Manufacturers Building have a frontage on Cascade Court and Geyser Basin and look across at Foreign Exhibits and Agricultural Palaces; Yukon Avenue separates these magnificent display buildings, and in the back ground the state buildings of Oregon and California are located.

Construction work on these buildings was completed last year and exhibits are being received and placed in position. The Oriental Palace will house the most valuable collection of Far Eastern art that has ever been sent from the Orient, and will present displays from Japan, China, India, Ceylon, Straits Settlements, French Indo China, Borneo, Java and all the eastern countries of Asia.

The Manufacturers building encloses a vast amount of exhibit space and every foot of this has been engaged for display purposes by domestic and foreign manufacturers. The interest manifested in this department of the Alaska-Yukon-Pacific Exposition is world-wide and competitive displays will be general and comprehensive. Exhibits are being daily received and the heavy work of installation is rapidly being accomplished.

Warehouse and
Mill Sites at
MIDLAND
Will Be
On Sale May 15th
See
D. B. CAMPBELL

SUMMONS

In the Circuit Court of the State of Oregon, for the County of Klamath.

W. A. Turner and W. P. Rhoads, Partners under the firm name of Turner Bros. & Rhoads, Plaintiffs, vs. J. Frank Adams, Martha Adams and F. O. Pierce, Defendants.

Suit in Equity to Foreclose a Lien. Summons.

To the above named defendant, F. O. Pierce:

In the name of the State of Oregon, you are hereby required to appear and answer the complaint filed against you in the above entitled suit, on or before the 6th day of May, 1909, that being the date of the last publication of summons, and the last day within which you are required to answer, as fixed by the order of publication of this summons; and if you fail to appear and answer, the plaintiffs will apply to the court for the relief demanded in said complaint.

Said suit is brought to foreclose a certain material-man's lien on a certain 1 1/2 story barn, of which you are the owner, situated on the following described land to-wit:

The E 1/2 of the NE 1/4 of Sec. 7, Tp. 41 S., R. 11 East of Willamette Meridian in Klamath County, Oregon; which said lien is for materials furnished by said plaintiffs to you to be used, and which were used, in the construction of said barn, and for which materials said lien was there after filed with the county clerk of said county, within thirty days from the time the said materials were furnished, and was for the sum of \$109.33 with incidental costs to the amount of \$6.80; and for an order to sell said barn to satisfy the amount of said lien, together with reasonable attorney's fees, costs and disbursements.

That unless you appear and answer on or before the 6th day of May, 1909, the plaintiffs will apply to the court for the relief demanded in said complaint.

This summons is published in the Klamath Falls "Republican," a weekly newspaper printed and published at Klamath Falls, Oregon, by order of Hon. George Noland, Judge of said court, dated the 23rd day of March, 1909; the first publication to be made on the 25th day of March, 1909, and the last publication to be made on the 6th day of May, 1909.

H. W. KEESSE,
Attorney for Plaintiff.

NOTICE FOR PUBLICATION.

(Not Coal Land)

U. S. Land Office at Lakeview, Oregon, April 8, 1909.

NOTICE is hereby given that EMERY A. PLUMB, of Klamath Falls, Oregon, who, on December 3, 1904, made Homestead Entry No. 3325 (Serial No. 01123), for SE 1/4, Section 29, Township 37 S., Range 10 E., Will Meridian, has filed notice of intention to make Final Commutation Proof, to establish claim to the land above described, before County Clerk, Klamath Co., at his office, at Klamath Falls, Oregon, on the 29th day of May, 1909.

Claimant names as witnesses: Tom Patterson, Berry Stiles, Henry Meyers, John Hibberts, Jasper Hibberts, all of Klamath Falls, Oregon.

J. N. WATSON,
4-15 5-27 Register.

SUMMONS.

In the Circuit Court of the State of Oregon, For the County of Klamath.

Suit in Equity for Decree of Divorce. Jackson N. Stiles, Plaintiff vs. Flora F. Stiles, Defendant.

To Flora F. Stiles, the above named Defendant:

In the Name of the State of Oregon, you are hereby required to appear and answer the complaint filed against you in the above entitled suit, on or before the 27th day of May, 1909, that being the day of the last publication of summons, and the last day within which you are required to answer, as fixed by the order of publication of this summons. If you fail to appear and answer, the plaintiff will apply to the court for the relief demanded in said complaint. Said suit is brought to secure dissolution of the bonds of matrimony existing between yourself and plaintiff.

This summons is published in the Klamath Falls "Republican," a weekly newspaper printed and published at Klamath Falls, Oregon, by order of Honorable George Noland, Judge of said court, and dated April 12, 1909; the first publication to be made on the 15th day of April, 1909, and the last publication thereof on the 27th day of May, 1909.

BENSON & STONE,
4-15 5-27 Attorneys for Plaintiff.

FOR SALE OR EXCHANGE.

320 acres of cattle or fruit ranch—plenty of fine water. Inquire at this office. 3-111f

FINAL ACCOUNT NOTICE.

Notice is hereby given that the undersigned has filed her final account and report as administratrix of the estate of Ebenezer N. Colson, deceased, and that ten o'clock in the forenoon of Friday, May 7th, 1909, at the County Court room of Klamath County, Oregon, in Klamath Falls, Oregon have been appointed and set as the time and place for hearing objections thereto and for settlement of the same.

MARY E. COLSON,
Administratrix of estate of Ebenezer N. Colson, deceased.

FOR SALE CHEAP.

3 3/4 freight wagons with beds.
6 3/4 freight wagons with beds.
5 3/4 freight wagons with beds.
2 logging trucks.
2 buggies.
1 8 passenger thoroughly braced stage.
1 set buggy harness.
1 set hack harness.
300 pounds chain.
Complete blacksmith outfit.
1 pair Studebaker 3 1/2 truck wheels.
Inquire of G. W. McIntire at Farmers Implement and Supply House. 4t

If You Own Any Farm

land, or know anybody who does, you ought to get in touch with the steps farmers in all parts of the country are taking to protect themselves from some of the commission men who have been robbing them almost ever since they were boys.

If you don't own any, but want the best short stories printed this month, get the

JUNE EVERYBODY'S

For Sale By
F. E. ANKENY
AMERICAN CONFECTIONERY