

# Spring Building Continues On Active Basis Here

## REMODELING HEADS WEEK'S PERMIT LIST

Klamath's spring building program continued on an active basis in the past week, with remodeling jobs featuring the week's new permits issued from the office of Building Inspector Harold Franey.

Completion of the Tower Theatre on South Sixth street was the building highlight of the week. Good weather brought progress on other jobs, both large and small and both in and outside of the city.

C. S. Robertson, 522 Lincoln street, remodel residence, \$2000.

R. E. Wattenburg, remodel business building at 622 Main street.

H. E. Hauger, remodel Buick Garage on Main street, adding to stock room and office, \$600.

J. R. Newman, business building on Market street, lot 9A, block 8, Railroad addition, \$3000.

Bert Paulson, remodel residence at 1320 Lakeview street, \$45.

A. C. Steward, remodel residence of G. T. McDonald, 426 Michigan avenue, \$40.

Cecil Green, remodel Buster Brown Shoe store, 633 Main street, \$300.

A. C. Erickson, double garage, 2041 Front street, \$200.

Klamath Iron Works, Spring street, remodel foundry, \$500.

F. A. Cook, 928 Tunnel street, garage, \$150.

J. R. Stevenson, reroof Earl Whitlock building, Sixth and Pine streets, \$75.

L. A. Whittenburg, remodel residence at 2145 Applegate avenue, \$75.

Axel Florin, residence, Darrow, addition, lots 4 and 5, block 305, \$3700.

## Soft Shoulder on Road Causes Crash

Kenneth Aust, 19, Seattle, Wash., reported to the motor vehicle office that a car he was driving struck a soft shoulder on highway 97 about 15 miles north of the city Sunday, hit a post, swerved across the highway and came to rest in the ditch. No one was injured, Aust said, but the car was damaged to the extent of \$250.

Pop Green of Modoc Point reported his car struck a workman on a highway construction job north of Klamath Falls Wednesday after a flagman had given "the all clear signal." Green said he stopped after the car hit the workman who stepped in front of it, but the man refused to be taken to a hospital, saying he was all right.

## Fire Razes House On Miller Ranch

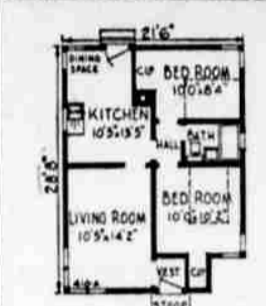
TULELAKE—Fire of undetermined origin, discovered by passerby about 9 o'clock Tuesday evening completely destroyed a frame house on the line between Siskiyou and Modoc counties.

Occupants of the house, whose names were withheld by authorities here, had moved out at noon on the day of the blaze and electric power to the building had been shut off, it was said. No information was released as to whether there was insurance on the building.

## SPECIAL CEMENTS

Ordinary linoleum cements should not be used when applying fiber board interior panels to smooth surfaces. Use only the special acoustical cements, Fir-Tex technicians say.

## The Treasure



The tiling may be laid in any direction desired.

Usually a better appearance can be obtained by starting the application of tiling in the center of an area, rather than at one end.

Building engineers recommend the use of sizes best adapted to the particular job, but in odd-sized rooms it is often impossible to come flush at the end of an area.

If the application of tiling is started in the center, the ends can be matched, resulting in a generally improved appearance.

## Lay Fibre Tiling With Furring Strips

When furring strips are used, interior fiber tile should be laid with long edges paralleling the furring strips. Fir-Tex technicians advise. When application is being made to a solid surface,

## DRIVE NAILS HOME

All nails should be driven home, but not with a nail set, when redecorating interior finish fiber boards. Each nail head and hole should also be treated with Swedish putty. Fir-Tex decoration experts advise.

## Zone Determination Eased For Builders, Says Franey

By HAROLD FRANAY, City Building Inspector

To determine the zone of the lot and block in which the proposed structure will be constructed, or the zone in which an occupancy is or is not permissible or the fire zone involved, a control map is available to the public in the office of the building inspector or a call will be welcomed to give you this information.

Class I—Residential District (a) ALLOWED USES

In a Class I residential district there may be erected, altered, and maintained, single family dwelling and uses accessory to a dwelling and property may be used for gardening.

(b) LOCAL OPTION USES

In such a district a building may be erected, altered and maintained and property may be used when local option approval is obtained (see Section 8) for the following uses: two family dwellings or duplexes, churches, public schools, private schools, public parks, public park structures, and public playgrounds, and buildings not conforming to regulations as to size, etc.

(c) PROHIBITED USES

In such districts there is prohibited all uses not included in paragraphs (a) and (b), except existing non-conforming uses which may continue under the provisions of section 7.

(d) SET BACK REGULATIONS, ETC.

In such a district the following set back regulations shall apply to all buildings except accessory buildings hereafter erected, enlarged or moved:

(1) Distance from building to front lot line not less than twenty (20) feet, unless the set back line has already been established in the particular block by two or more buildings at a greater or lesser depth than twenty (20) feet, in which case any new building shall be set back to conform.

(2) Distance from building to street side of lot not less than ten (10) feet from building to side line of lot not fronting on a street four (4) feet.

(3) Distance from dwelling or

## BUILD WHILE BUILDING GOOD, SAYS EXPERT

While lumber and other building materials prices maintained a practically level movement during March and the first week of April, prospective home builders are advised by Western Homes foundation of rising emergency defense demands that may affect supply of materials in the next four months, a period which William S. Knudsen has declared "might be crucial in the whole history of the world."

"Latest estimates from the office of production management for total military and merchant marine lumber requirements amount to 8,500,000 board feet, in contrast to 6,000,000 feet used for the same purposes in the World war," states W. C. Bell, foundation chairman. "From 28 to 34 new army cantonments are projected. Seventy two thousand and eight hundred and three defense housing units have been allocated. Seven hundred and eighty four defense industry plants are in various stages of expansion. Shipyard building is being rushed, to complete the scheduled construction of 3400 ships in the shortest possible time. A great number of these are wood ships, including 210 minesweepers requiring Douglas fir keel timbers 106 feet in length. In all these and many other projects lumber is a 'must' material, and they represent tremendous demand for other materials."

"The moral for the renting family is 'build now,' while materials are readily available and prices are good. The labor department's index of wholesale prices for the week ending April 5 shows a rise of only 0.3 point in the previous month for building materials, while two other major necessities of everyday life rose 4.5 and 4.6 points in the same period. Lumber price decreased in the week ending April 5. This was in the face of the rapidly expanding defense demand coupled with normal spring increase in private building. The tens of thousands of local units of the U. S. building industry will continue to make every effort to maintain a level price movement and to supply low-cost housing, but this industry with others must give national defense priority."

The "Treasure" home pattern is offered by Western Homes Foundation this week as another in its series of minimum-cost home designs. These were created by the building industry to serve in the defense housing program. The exterior charm and interior convenience of the Treasure home are visualized in the illustrated elevation and floor plan. Note how cleverly corner windows have been provided for every room. Like others in the series, this pattern may be easily adapted by local retail lumber dealers to meet

## Racket Discovered On Traffic Tags

City police were irate Friday when they discovered a traffic ticket had been stolen from one car, information substituted and the name of a traffic officer forged on the stub.

The present system of "fix-less" tickets makes it possible for officers to trace the original source of the tickets, and persons found switching the tags to other cars will find themselves prosecuted to the fullest extent of the law, police said.

Try the Classified Ads

## Tips From Garden Notebook

By A Klamath Gardener

Now is the time when most garden-minded folk are visualizing their summer gardens. And a little planning now will save disappointment later. A really pretty spring garden is a difficult job for the amateur gardener, and no snap for a lot of us who consider that we have had sufficient experience to get better results. So many times it seems that something is bound to happen in our climate to spoil our fondest hopes for spring garden effects.

This year a lot of us rushed the season a bit when we had those lovely days early in March, and seeds planted then, unless they had diligent care, did not do much. I have heard complaints that perennials that should be looking much better than they are, just seem to be standing still. I think probably the reason for this is that we have depended on the moisture that we should have had, and which we usually get, but which did not come this year. I have heard discussions on the spring flowering bulbs, especially tulips, to the effect that they seem to bud and start blooming before they are more than a few inches high. Have a number like this myself, and have found that the cause is probably because the spring season has been so dry, and then those cold windy days did not help a bit.

In protected places, the bulbs that have received sufficient moisture seem to be as lovely as ever. We can't all have the protected spots so then the idea would be to bring about these conditions ourselves, and the most important item is water. I know most of us have had the habit of depending on the weather, but this year even if it has been cool and cloudy those spring bulbs should be watered, as should also all the other plants that have lived in the garden all winter.

This is a good time to plan for different garden effects and make some notes, so that another spring will find us with suggestions, and bare spots may be taken care of so that the effect can be remedied this fall when it is time to plant spring flowering bulbs.

Spring is a period of bareness and high lights. The reason for this seeming high pitch is because the trees and shrubs are bare. They cast no shade and do

not satisfy individual tastes and needs.

A post-card request to Western Homes Foundation, 364 Stuart building, Seattle, Wash., will bring "Two Answer Books" on home building.

FHA Title II requires or to sat-nod absorb any of the light. Unless a spring garden is so arranged there is not the contrast of light and shadow that makes a summer garden so charming. To bring this charm to spring gardens shadow must be provided one way or another, not only as a contrast and foil to the high lights but as a background.

As evergreens and other plants keep their shadows at all times, it is a good idea to plan to have something of this sort. They may be used effectively as background material whether a high or low effect is desired.

Usually a natural effect is much more charming in a spring garden than a more formal effect. Also there is much more satisfaction in grouping types so that there are masses of color here and there, rather than a half dozen of one kind in one place and another little dab some place else so that larger patches of something else and background growth will over-balance the color effects.

## Vacation School Opening May 26

MERRILL—May 26 has been set as the opening date for the annual vacation school for children of St. Augustine's church with daily classes to continue for a two-week period, it was announced Friday by Father James O'Conner, pastor.

Classes for both primary and older children will be taught.

Members of a family in Nice, southern France have been born bald and remained hairless all their lives for the past 150 years.

## 36 FFA MEMBERS HONORED AT MEET

CORVALLIS, April 26 (AP)—Thirty-six boys were announced Friday as qualifying for the state farmer degree at the thirteenth annual convention of the Future Farmers of America.

Superior records plus oral examinations at the convention were considered for qualification. At the same time it was announced that 21 of the state's 53 chapters met the rigid requirements for keystone classification. The state farmers represent 24 chapters with Salem, Gresham, Albany and Scappoose leading with three winners each.

The state farmers include: Jerry Lehman, Newberg; Frank Harding, Rainier; Harvey Toftle, Dale Hoeker and Lloyd Sipe, Gresham; Yasu Teramura, Charles Dougherty, Oregon City; Joseph Beno, Louis Oester, Carl Larsen, Scappoose; Gene Stockhoff, McMinnville; Bill Hillbrand, Corvallis; Dale Hengstad, Amos Furness, Silverton; Harry Thienes, Eugene; Scott Wheeler, Lebanon; Dave Damsayer, Vernon Johnson, Loyis Satter, Salem; Robert Magee, Dayton; Homer Brewer, Adrian; Boyd Shelton, Halfway; Elden Wagenblast, The Dalles; Warren Cooley, Bob Ohling, Willis Buck, Albany; Willis Bailey, Keith Searles, Enterprise; William Roner, Cottage Grove; Duane Clauson, Wallowa; Frank Trigg, Kenneth Anderson, Myrtle Point; Bill Duff, Pendleton; Richard Baum, Union.

The keystone chapters include:

MODEX  
The Modern Casing Paint  
Washable—Self-cleaning  
GOELLER'S  
230 Main Phone 6704

Adrian, Albany, Amity, Conby, Corvallis, Cottage Grove, Dayton, Dufur, Enterprise, Eugene, Lakeview, McMinnville, Myrtle Point, Nestucca, Newberg, Nyssa, Pendleton, Salem, Scappoose, Silverton and Wallowa.

LIGHT SANDING  
When refinishing interior panels with oil paint or varnish, sandpaper lightly between coats for best results, Fir-Tex advises.



## Workmanship

Quality materials combined with genuine craftsmanship results in satisfaction. That's Home Lumber and Supply Company's guarantee — quality throughout, and satisfaction. Call on us for building supplies and services.



## Home Lumber and Supply Co.

2324 So. 6th Phone 3140

## The SPRING INVASION OF FLIES Is On!

Are You Prepared with Screen Doors - Window Screens - Screen Hardware

Call us for all your screen needs. Complete stock Lowest Prices

### KLAMATH VALLEY LUMBER CO.

1940 S. 6th - Just over the viaduct Phone 4816

## FOR BETTER LAWNS

Use CALIFORNIA BRAND BLACK TYPE PEAT MOSS From Modoc County

In Packages 15c - 35c - 75c - \$1.60 Bale - \$3.25

### Murphey's Seed Store

422 Main St. Phone 4455

## CHECK-UP

It's Time To Re-Build, Remodel Repair!

- ★ Roofing
- ★ Flooring
- ★ Siding
- ★ Insulation
- ★ Millwork
- ★ Paints
- ★ Cements

Whether you're remodeling, repairing or re-building, get your supplies from Home Lumber. You will get high quality at low cost and credit is easily arranged!

Call HOME LUMBER and SUPPLY CO.

2324 So. 8th Phone 3148

## Enjoy Life

BIG BASIN LUMBER CO. CAN SHOW YOU HOW!

Strange as it may sound, you'll really Enjoy Working around A Home of Your Own

An attractive new house adds zest to living . . . and makes you want to keep it looking its best always.

### Borrow to Build — Pay Rent to Yourself

FHA Loans

Are available through Big Basin Lumber Company. You need only 10% Of the total cost for Down Payment

Even though you need pay only about \$1.00 a day on the loan for a \$5000 home, you are building up an equity that is worth dollars to you if you should decide to sell.

### BIG BASIN LUMBER CO.

Spring and Main Streets Phone 3144