

# Markets and Financial

## BUYERS ALOOF AS WAR NEWS DIMS STOCKS

NEW YORK, April 21 (AP)—The stock market today looked as though it was pretty well "sold out" but many potential buyers again were kept in the waiting column by the pessimistic tenor of the war news.

The turnover of approximately 400,000 shares was helped by two 200,000-share blocks of Commonwealth and Southern, unchanged at 1.

That the market may have done a lot of discounting of unpalatable foreign happenings was thought to have attracted bidding.

While business progress was viewed as fairly satisfactory, tax and labor worries remained as speculative handicaps.

Today's quotations:

Air Reduction	36
Alaska Tuna	41
Al Chem & Dye	149
Am Car & Dye	23 1/2
Am Rad Sta San	6
Am Roll Mills	12 1/2
Am Smelt & Ref	34 1/2
Am Tel & Tel	156 1/2
Am Tob "B"	68 1/2
Am Water Works	41
Am Zinc L & S	53
Anaconda	23
Armour III	41
Atchison	24
Aviation Corp	21
Bald Loco	121
Bendix Avia	32 1/2
Beth Steel	69
Boeing Airp	123
Borden	19 1/2
Borge-Warner	16
Callahan Z L	51
Callum Hec	51
Canada Dry	12
Canadian Pacific	38
Cat Tractor	43
Celanese	118 1/2
Ches & Ohio	37 1/2
Chrysler	57
Col Gas & El	38
Com'l Solvents	91
Comm'n'w'ith & Sou	7 1/2
Consol Aircraft	216
Consol Edison	19 1/2
Consol Oil	51
Con'l Can	34
Corn Products	43
Crown Zellerbach	113
Curtis Wright	7 1/2
Doug Aircraft	64 1/2
Dupont de N	140 1/2
Eastman Kodak	127 1/2
El Pow & Lt	11
General Electric	30
General Foods	13 1/2
General Motors	37 1/2
Goodrich	11 1/2
Goodyear Tire	16 1/2
Gt Nor Ry pfd	23 1/2
Greyhound	10 1/2
Illinois Central	61
Insp Copper	9 1/2

## Carload Potato Shipments

Day of Month	Season of 1940-41			Season of 1939-40		
	Apr.	Daily	Apr. to Date	Daily	Apr. to Date	Season to Date
1	35	35	8322	27	27	6488
2	18	51	8338	37	64	6525
3	49	100	8387	35	99	6580
4	35	135	8422	27	126	6587
5	47	182	8469	33	159	6620
6	3	185	8472	35	194	6655
7	47	232	8519	3	197	6658
8	34	266	8553	21	218	6679
9	45	311	8598	29	247	6708
10	34	345	8632	27	274	6735
11	36	381	8668	25	299	6760
12	40	421	8708	19	318	6779
13	0	421	8708	17	335	6796
14	30	451	8738	5	340	6801
15	37	488	8775	17	357	6818
16	42	530	8817	3	360	6821
17	30	560	8847	8	368	6829
18	33	593	8880	14	382	6843
19	28	621	8908	16	398	6859
20	0	621	8908	9	407	6868
21				3	410	6871
22				12	422	6883
23				13	435	6896
24				10	445	6906
25				12	457	6918
26				14	471	6932
27				19	490	6951
28				4	494	6955
29				14	508	6969
30				6	514	6975
31						

Shipments by Truck	227	
Grand Totals	741	7202

Int Harvester	44	Pullman	231
Int Nick Can	26 1/2	Radio	31
Int Tel & Tel	2	Rayonier	12
Int Pap & P pfd	61 1/2	Rayonier pfd	231
Johns Manville	55 1/2	Republic Steel	17 1/2
Kennecott	32	Richfield Oil	84
Lib O Ford	32	Sears Roebuck	68 1/2
Lockheed	19 1/2	Shell Union	12 1/2
Loew's	29 1/2	Socony Vacuum	8 1/2
Long-Bell "A"	23	Sou Cal Edison	24
Montgomery Ward	33	Southern Pacific	9 1/2
Nash-Kelv	3 1/2	Sperry Corp	29 1/2
Nat'l Biscuit	16 1/2	Standard Brands	5 1/2
Nat'l Dairy Prod	12 1/2	Stand Oil Calif	19 1/2
Nat'l Dist	19 1/2	Stand Oil Ind	27 1/2
Nat'l Lead	14 1/2	Stand Oil N J	35 1/2
N Y Central	11 1/2	Stone & Webster	5 1/2
No Am Aviation	12 1/2	Studebaker	5
North Amer Co	13 1/2	Sunshine Mining	7
Northern Pacific	5 1/2	Texas Corp	36 1/2
Ohio Oil	7 1/2	Trans-America	4 1/2
Otis Steel	7 1/2	Union Carbide	63 1/2
Pac Amer Fish	7 1/2	Union Oil Calif	131
Pac Gas & El	26	Union Pacific	76 1/2
Packard Motor	21	United Airlines	104
Pan Amer Airways	10	United Aircraft	34 1/2
Paramount Pic	11	United Corporation	11 1/2
Penney (J C)	79 1/2	United Drug	3 1/2
Penna R R	23 1/2	United Fruit	62 1/2
Phelps Dodge	26 1/2	U S Rubber	20 1/2
Phillips Pet	38	U S Rubber pfd	88
Proctor & Gamble	53 1/2	U S Steel	50 1/2
Pub Svc N J	24 1/2	Vanadium	23 1/2
		Warner Picture	3 1/2
		Western Union	9 1/2
		Westinghouse	88 1/2
		Woolworth	29



Sears employee this week received their annual statements on their profit-sharing and pension fund. This showed a large increase in company participation. Here T. R. Thompson hands out the statements to employ members.

## WHEAT MARKET IN CONTINUED SLUMP

CHICAGO, April 21 (AP)—The wheat market today resumed the slow retreat which began with the Balkan invasion. Losses of more than a cent at times carried prices to levels 4 to 5 cents below the highs reached about two weeks ago.

War news, weakness of securities and failure of temperatures in the southwest to fall as low as had been expected Saturday were largely responsible for the selling. Buying which stimulated a recovery of about half the loss was associated with heavy overseas shipments of wheat and flour from North America and reports that Spain was after more Argentine grain.

Wheat closed unchanged to 1/4 cent lower compared with Saturday, May 90 1/4-1/2c, July 88 1/2-1/4c; corn 1/2c off to 1/2c up, May 87 1/2c, July 68 1/2c, Oats 1/4c lower to 1/4c higher.

## Portland Produce

PORTLAND, April 21 (AP)—BUTTER—Prima A grade 20c lb. in parchment wrappers; 2 1/2c in cartons; B grade 20c in parchment wrappers; 2 1/2c in cartons.

CHEESE—Selling price to Portland retailers, Wisconsin triplets 2 1/2c lb.; best 2 1/2c lb. triplets to wholesalers 19 1/2c lb.; best 2 1/2c lb. triplets to retailers 19 1/2c lb.; best 2 1/2c lb. triplets to retailers 19 1/2c lb.

LIVE POULTRY—Selling prices: No. 1 grade Leghorn broilers 1 1/2 to 2 lbs., 17 1/2c; fryers under 4 lbs., 16c; springers 4 to 4 1/2 lbs., 20c; roasters over 4 lbs., 21c; colored hens over 4 lbs., 18c; hens 4 to 6 lbs., 18c; Leghorns under 2 1/2 lbs., 18c; over 2 1/2 lbs., 19c; old roosters 7c lb.

ONIONS—New California was \$2.25 imp. 31-35; Florida \$2.00 per 50-lb. crate; new California long white No. 1, \$1.60; B grade 78-80 per 50-lb. bag; Old Spanish No. 1, \$1.25-1.40; sweet Deschutes brand \$1.45; Klamath \$1.35-1.40 (total); select Idaho \$1.50.

## POTATOES

LOS ANGELES, April 21 (AP)—USDA—Potatoes: 6 cars California, 15 Idaho, 1 Oregon arrived; 44 unbroken, 16 broken cars on track; by truck 19 cars California, 2 Utah, 1 Idaho, 1 Nevada arrived; market slightly weaker on old stock, steady on new; Oregon Burbanks No. 1, \$1.35; Oregon Klamath district Russets No. 2, 80c.

SAN FRANCISCO, April 21 (AP)—USDA—Potatoes: 7 cars California, 8 Oregon arrived; 15 unbroken, 13 broken cars on track; market dull; Oregon Klamath district Russets No. 1, \$1.15-1.30, occasional car \$1.40; combination grade washed 90-95c.

CHICAGO, April 21 (AP)—USDA—Potato arrivals, 217; on track 552; total US shipments 653; supplies, old stock rather heavy, demand for Idaho Russets fair, market slightly weaker, for Western Triumphs demand light, market about steady, for northern stock all variety demand slow, market dull and weak; Idaho Russet Burbanks US No. 1, \$1.42-1/2-60; new stock, supplies rather heavy, for Texas Triumphs demand good, market steady, for California Long Whites demand light, market about steady.

## Three Redding Newspapers Joined in Consolidation

REDDING, April 21 (AP)—Redding's three daily newspapers today were consolidated into one, with morning and afternoon editions.

This followed fast on the heels of an announcement by Walter H. Fink, owner of the long-established Searchlight, morning, and Courier-Free Press, afternoon, that his properties had been sold to the John P. Scripps newspapers, publishing the Record, afternoon daily established in October, 1938.

Paul C. Bodenhamer, editor, and Harry O. Bostwick, Jr., business manager of the Record, said that the Searchlight would be continued under that name as a morning edition of the Record.

The Courier-Free Press circulation will be consolidated with that of the Record and its name carried as secondary title line of the afternoon edition.

The Courier-Free Press, founded as the Shasta Courier in 1852, is one of the oldest newspapers in California. Mr. Fink will remain with the newspapers, writing a daily comment column.

The purchase included the names, circulation and goodwill of the Fink papers, the former owner retaining most of the plant and equipment. The Record did, however, acquire one large, modern typesetting machine. In addition to the dailies, the transfer included a weekly publication, the Shasta Courier.

The consolidated papers have both morning and evening memberships in the Associated Press.

## PORTLAND LIVESTOCK

PORTLAND, Ore., April 21 (AP)—USDA—Hogs: salable 2,000, total 2800; market slow, 25-35c lower; good-choice 170-213 drive-ins \$9.35-50; few selected lots \$9.60; carloads mostly \$9.50; 230-280 lb. butchers \$8.75-9.00; light lights \$8.50-9.00; packing sows mostly \$7.75-8.25; lightweights to \$8.50; feeder pigs 25-50c higher; good-choice grades \$10.00-25; few to \$10.50.

Cattle: Salable 2600, total 2200; calves salable 125, total 150; cows, heifers and early sales steers steady; liberal supplies medium-good steers unsold; some bids 25c lower; bulls steady; choice vealers steady; others weak to 50c lower; few loads fed steers \$9.75-10.75; off head to \$11; fed heifers \$9.50-10.40; common-medium heifers \$6.75-8.50; canner-cutter cows \$5.00-6.25; fat dairy cows \$6.75-7.50; good beef cows \$8.00-75; medium-good bulls \$8.00-9.00; cutters down to \$6.75; good-choice vealers \$11.50-13.00; common-medium grades \$7.00-10.50.

Sheep: Salable 18000, total 2800; market steady; good-choice spring lambs mostly \$11.00; medium grades \$9.50-10.00; medium-good shorn lambs \$8.00-25; good-choice grades \$8.50-9.00; shorn ewes \$4.00-5.00; common grades down to \$2.00.

## S. F. LIVESTOCK

SOUTH SAN FRANCISCO, (AP) (Fed. State Mkt. News)—Hogs: Salable 600. Around 10c lower; bulk 185-225 lb. butchers \$10.00, two loads Idaho \$10.10, few package medium \$9.85, odd heavies \$9.50; packing sows \$8.00 down.

Cattle: salable 300. Steers steady, active, one load 944 lb. fed Idaho \$11.25; top; two loads 015-1084 lb. \$10.75-11.00; about load medium \$9.75-10.25; package fed Idaho 630 lb. heifers \$10.00, steady; around two loads medium 985-1108 lb. grass cows \$8.00-10, first of season; canners and cutters \$5.00-50; bulls \$8.00-50. Calves: Salable 50. Steady; about 25 head 280 lb. vealers \$13.00; good calves \$9.00-11.00.

Sheep: salable 200. Around 1 deck 77 lb. spring lambs \$10.75; shorn ewes mostly \$5.00 down.

\$8.00-25; good-choice grades \$8.50-9.00; shorn ewes \$4.00-5.00; common grades down to \$2.00.

## UNIVERSITY PANEL DISCUSSIONS SET

A symposium group of speakers from the University of Oregon will give two panel discussions Tuesday, April 22, on "Women's Careers in the Modern World." The first discussion will take place in the Bonanza high school gymnasium at 2 o'clock sponsored by the high school and the PTA.

The second discussion will be held at the Bonanza city library at 8 p. m. and sponsored by the Women's club. The public is invited. It is hoped that many will avail themselves of this opportunity. The panel discussion group has won favorable comments throughout the state and will prove interesting to the men and women of the community.

## PTA Groups Issued Invitations to Visit Local Health Unit

Special invitations have been issued to officers and members of the PTA in Klamath county to attend the open house at the county's health department, corner of Eighth and Pine streets, on Thursday afternoon when the department's work and equipment may be seen and demonstrated.

This open house will be the most interesting feature of the Early Diagnosis campaign, sponsored by the Klamath County Public Health Association. Chairman is Mrs. Robert Hart, and Mrs. Mahr Reymers in charge of the open house to which the entire public is invited.

In connection with the Early Diagnosis, R. Paul Roberts, president of the health association, points out that tuberculosis among persons over 50 years of age constitutes one of the largest public health problems in this country.

"For many years, it was commonly believed that persons over 50 were immune to tuberculosis. This is not true," said Roberts. "But even now the prevalence of the disease among elderly persons is not generally realized. Many instances of tuberculous infection in children may be traced directly to contact with grandparents who are not even aware they have the disease. They call it bronchitis or asthma."

Roberts emphasized that the anti-tuberculosis campaign cannot afford to neglect this part of the population.

## AFRICAN BELIEFS

Some African savages still believe that white men are the ghosts of black men, that all deaths from disease are caused by evil spirits, and that apes are a race of human beings.

Roberts emphasized that the anti-tuberculosis campaign cannot afford to neglect this part of the population.

## Our Home Town

### A Reputation for Fair Prices

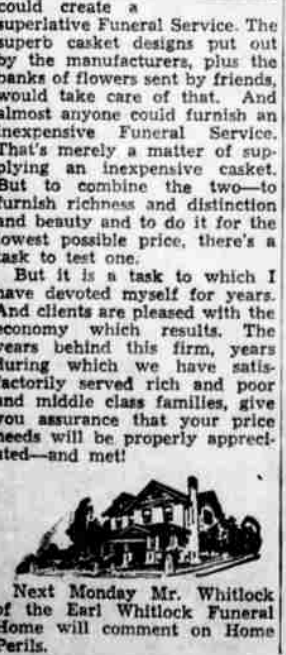
By EARL WHITLOCK

Hardly a week goes by without some patron exclaiming, "Well, really, I had no idea that such a beautiful service as this could be bought for so little."

Now statements of this sort naturally make me feel pretty happy. Because I have always felt that, unless I could create the most beautiful Funeral Service AND do it for less, I was falling down on my knees.

You see, almost anyone could create a superlative Funeral Service. The superb casket designs put out by the manufacturers, plus the banks of flowers sent by friends, would take care of that. And almost anyone could furnish an inexpensive Funeral Service. That's merely a matter of supplying an inexpensive casket. But to combine the two—to furnish richness and distinction and beauty and to do it for the lowest possible price, there's a task to test one.

But it is a task to which I have devoted myself for years. And clients are pleased with the economy which results. The years behind this firm, years during which we have satisfactorily served rich and poor and middle class families, give you assurance that your price needs will be properly appreciated—and met!



Key to the City

THE WHOLE BUNCH

Who wants what key to what city? A whole bunch, and from San Francisco! That's the Fairmont's offer. Opening the joyful joys of the Terrace Swimming Pool and Sun Terrace. Keying into the goodfellowship of the Circus Lounge cocktail hour. Unlocking savory delights in the Venetian Dining Room. Magnificent view, etc., etc., etc. . . and with what service! Only four minutes to shops and theatres.

Rates from \$4.00 per day Garage in building Geo. D. Smith, Gen. Mgr.

FAIRMONT HOTEL SAN FRANCISCO

JOIN . . .

the 2650 Savers and Enjoy Better Returns and Insured Savings!

FIRST FEDERAL SAVINGS AND LOAN ASSOCIATION OF KLAMATH FALLS

Member Federal Savings and Loan Insurance Corporation Sixth at Main Dial 5195

Save 20% On Memorials

By Calling at Klamath Falls Marble and Granite Works—116 So. 11th St.—and Making Your Own Selection.

TUESDAY LAST DAY!

We invite you to avail yourself of meeting

MISS BLANCHE JONES

Formfit

FASHION EXPERT AND FIGURE ANALYST

here to counsel with you on your figure needs and to bring you up-to-date with fashion.

MONDAY AND TUESDAY - APRIL 21 - 22

LaPointe's