

COAST TIMBER FIRMS ATTAIN HEAVY OUTPUT

SEATTLE, March 11 (AP) — A combination of large order files and an open winter has had the effect of expanding west coast logging and lumber manufacture to more than the estimated capacity of the industry, the West Coast Lumbermen's association said Monday.

Its monthly statement on the condition of the market said small portable operations have multiplied and some mills with one-shift rating have been operating two shifts. As a result the lumber production reached an exceptional peak in February.

The report said: "The sustained heavy volume of west coast orders is due to the continued expansion of defense construction, ranging from shipyards to industrial housing, from new army camps in the states to defense buildings of many types in Alaska and other national outposts. Defense requirements represent from 40 to 50 per cent of the current demands on west coast mills."

"The retail yard trade is experiencing its usual seasonal slump from the late-winter slow-up in home construction. In several sections residential and farm building has been practically stalled by severe weather. Shipments to the Atlantic coast remain slack because of space shortage."

The report said the weekly average of west coast lumber production in the four weeks of February was 167,196,000 board feet or 105.0 per cent of estimated capacity. Orders averaged 165,056,000 board feet; shipments 158,602,000 board feet.

The weekly averages for January were: production 150,095,000; orders 147,930,000; shipments 151,365,000.

In the first nine weeks of 1941 the cumulative production amounted to 1,419,261,000 board feet and during the same period in 1940, 1,125,901,000.

COME AND GET IT

CARROLLTON, Mo., (AP) — The first whistle of the night Wabash train brings two dozen dogs, barking excitedly, on the run to the depot.

Roy Mack, dining car chef, started saving bones for some Carrollton families. Now he has a noisy list of steadily growing customers every time the train stops here.

A New Britain, Conn., cat is raising three mice. Nothing like stocking your own larder.

Some of the books that are bound today ought to be gagged.

Simple Squares Make An Heirloom



Household Arts by Alice Brooks

Crocheted Square Forms Scarf Pillow Cloth Spread

Dahlia

PATTERN 6933

Here's a dahlia that will win you prizes at any show! So start crocheting this quickly memorized medallion now — add its beauty to your home in a lovely accessory. Pattern 6933 contains instructions for making medallion; illustrations of it, and

stitches; photograph of medallion; materials needed. To obtain this pattern send 10 cents in coin to The Herald and News, Household Arts department, Klamath Falls. Be sure to write plainly your NAME, ADDRESS and PATTERN NUMBER.

Water Shortage Here Shows Little Cause for Concern

While other sections of southern Oregon are a little worried over the prospects of a late season irrigation water shortage, officials of the US reclamation bureau here say there is no need for concern on this side of the mountains.

A check late Monday reported snow conditions in the local water shed slightly improved over last year however officials do not anticipate as great a runoff as in 1940 in view of the fact that March was far above normal last year and future conditions this year will be "normal." There has also been an earlier run-off this year.

At Annie Springs there is now 103.5 inches of snow with a water content of 39.9 inches, as compared to 105.1 inches of snow and 38 inches of water content in 1940.

Other comparative figures were given for this section by the US weatherman:

Chemult, 1941, 26.1 inches of snow, 8.4 inches water content; 1940, 23.2 inches of snow, 8 inches water content.

Clear lake country on Crowder flat, 1941, 6 inches of snow, 3 inches water content; 1940, trace.

Lake o' the Woods, 1941, 17.3 inches snow, 5.6 inches water content; 1940, 10.2 inches snow, 2.8 inches water content.

Quartz Mountain, 1941, 23 inches snow, 6.2 inches water content; 1940, 8 inches snow, 3.1 inches water content.

Summers rim, head of the Sy-

can, 1941, 42.3 inches snow, 13.6 inches water content; 1940, 47.6 inches snow, 12.6 inches water content.

MEDFORD, March 11 (AP) —

Unless snow conditions improve more than is normally to be expected, a late season irrigation water shortage in the Medford, Rogue River and Talent Irrigation districts could occur, it was stated Friday in a report issued by R. A. Work, associate engineers of the federal soil conservation service.

Earlier surveys indicated a plentiful supply of irrigation water this year, but conditions changed radically in February when both snowfall and precipi-

tation fell below normal, the report says.

Emigrant dam near Ashland is full, but other reservoirs supplying the Medford-Ashland farm areas have only from 19 to 47 per cent of capacity.

First Twins Born For Year 1941 In Klamath Falls

Twin boys — first twins of 1941, were born to Mr. and Mrs. Carl F. Woods of 4634 Crosby street, Monday at Hillside hospital. Twin No. 1 arrived at 12:30 p. m. and weighed in at 5 pounds 61 ounces. Twin No. 2 arrived at 12:40 p. m. and tipped the scales at 6 pounds 11 ounces.

The boys are sons of a well known Weyerhaeuser employe.

Alliance Will Pick Delegates For Convention

Members of the Klamath local of the Culinary Alliance will vote Thursday for delegates to the National Alliance convention which will be held April 21-27 in Cincinnati, Ohio, G. C. Tatman said Tuesday.

The convention, called a Golden Jubilee, will mark the 50th anniversary of the alliance's founding.

GOLD DIGGERS

RISING SUN, Ind., (AP)—Add effects of war:

Since scrap metal prices went up, many treasure hunters have been digging junked automobiles out of the Ohio river bank here to sell.

Mayor A. B. Cooper had to threaten arrests and make them stop.

Watch For "K" 4 9

Snap Your Fingers

AT EVERY DAY INVESTMENTS!

Insured Savings - -

And better returns on your savings dollar—with Southern Oregon's largest institution of its kind—is safe, sure and profitable!

FIRST FEDERAL SAVINGS AND LOAN ASSOCIATION OF KLAMATH FALLS

Member Federal Savings and Loan Insurance Corporation Sixth at Main Dial 5195



New Liner To Be Named As Tribute to American Press

Named as a tribute to a free and vigorous American press, the United States Lines motorship, "American Press" will be launched with elaborate ceremonies, March 11 at the Western Pipe & Steel company in South San Francisco.

It will be christened by Camilla Chandler, 15 year old daughter of Norman Chandler, chairman of the newspaper publishers committee and president of the Los Angeles Times. The 12,875 ton motor ship, "American Press" will join its sister ships, "American Leader", "American Manufacturer", "American Builder" and a fifth ship not yet named, in the American Pioneer Lines service to the Orient.

Kenneth Dawson, vice president in charge of Pacific coast operations for the United States Lines explained the naming of the new C-1 cargo ship, "To maintain a democracy," he said, "it is imperative that its citizens be informed. We have seen democracies and human freedom disappear in Europe only after the sources of information in a free press were destroyed. It is fundamentally because of its uncensored newspapers that the American public can remain free, protected against tyranny and injustice. It is therefore

WAITRESS' DANCE TO BE SATURDAY

Plans Tuesday were virtually complete for the annual Waitress' dance of the Klamath Falls local union which will be held Saturday, March 15, at the armory.

Ten per cent of dance receipts will be given to the Greek War

Relief fund, G. C. Tatman of the Culinary Alliance said Tuesday.

Approximately half a billion fence posts have to be replaced in the United States every year.



COMING—PELICAN

Advertisement for Cream of Kentucky Bourbon. Includes text: 'NOW... TRY Cream of Kentucky THE DOUBLE-RICH BOURBON'. Price: PINT \$1.00. 'THIS WHISKEY IS 4 YEARS OLD'. 'STRAIGHT BOURBON WHISKEY, 90 PROOF • SCHENLEY DISTILLERS CORP., N. Y. C.'

Akard's Stock Goes OUT! And out IT MUST GO -- Here's HOW It Goes-- Starting Wednesday--Women's Shoes--2 Pairs for the Price of 1!



It's 2 pairs for the price of 1 pair!

2 for 1 SHOE SALE FOR WOMEN!



Hurry! These bargains won't last long!

SALE STARTS WED. 9 a. m. at Akard's Shoe Store



Arbuckle-King and Company has purchased the Akard Shoe Store... while it is not good business to sell shoes for less than wholesale cost, we must dispose of this fine, new stock immediately. So, right now, at the start of the Spring season, we bring you PETERS SHOES, VELVET STEPS and QUEEN QUALITY SHOES at TWO PAIRS for the price of ONE! Ladies, don't delay! Here is real opportunity to save on footwear of outstanding quality for Spring!



Reg. 3.95 SHOES - Now 2 Pairs - - 3.95 Reg. 4.95 SHOES - Now 2 Pairs - - 4.95 Reg. 5.85 SHOES - Now 2 Pairs - - 5.85

NATIONALLY ADVERTISED "QUEEN QUALITY"

Reg. 6.75 "Queen Quality" Shoes Now 2 Prs. 6.75 Reg. 8.75 "Queen Quality" Shoes Now 2 Prs. 8.75

2 For 1 For WOMEN!



PLEASE SHOP AS EARLY IN THE DAY AS POSSIBLE... FOR BETTER SERVICE

Right Now - - When You Need Them Most 2 for 1

IF YOU CAN'T USE TWO PAIR YOURSELF, BRING A FRIEND AND SPLIT THE BILL!

New Spring Styles in Quality Footwear 2 for 1



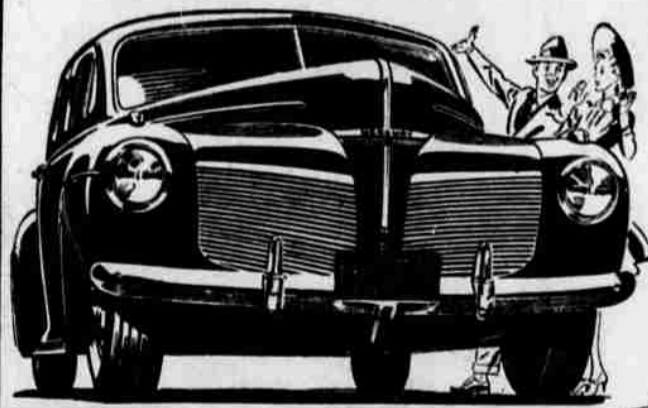
A SMALL DEPOSIT WILL HOLD YOUR PURCHASE

akard's

YOU'LL KNOW IT BY THE CROWDS! 717 MAIN STREET

A New And Different Kind Of Car

Alone In Its Class With V-8 Performance!



- 1 MORE POWER PER POUND—Mercury is built to aircraft principles with more power per pound than most other cars—for unusual big-car performance at low cost.
2 MORE ROOM—There's plenty of room in Mercury's spacious interior! Seats are extra-wide so big passengers can stretch, rest and relax in comfort—without crowding.
3 MORE RUBBER ON THE ROAD—Mercury's new, larger tires with wider tread put more rubber on the road for added grip in starting and stopping—greater stability on curves.

MERCURY is the only car in its price class that gives you the fleetness and power of a rugged V-8 engine. That's one reason this big, nimble car gets away faster—and stays out in front! Mercury is built to aircraft principles, with more power per pound than most other cars. Because it has no superfluous weight, Mercury combines brilliant performance with unusual stamina and economy. Owners report up to 20 miles per gallon. Deep-cushioned seats, slow-motion springs and double-acting shock absorbers provide a new high in riding comfort. Balanced weight distribution and new, wider tires give Mercury unusual road-hugging stability.

MERCURY 8 DRIVE IT 50 MILES THEN DECIDE

BALSIGER MOTOR CO.

Main and Esplanade

Klamath Falls, Ore.