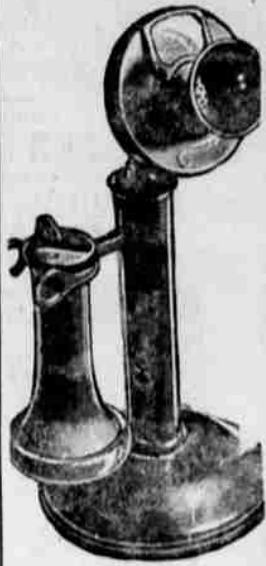


Want-Ads Bring Results Phone Yours to 1900



12 Room and Board WANTED—Roomers and boarders... 13 Furnished Apartments... 14 Furnished Houses... 15 Unfurnished Houses... 17 Real Estate For Sale... 19 Automotive... 19a Markets... 20 Miscellaneous For Sale... 21 SACKS... 22 Livestock and Feed... 23 Financial... 24 Business Opportunities... 25 Necessities for Work... 26 Work for Necessities... 27 Personal... 28 Situations Wanted... 29 Furnished Rooms...

Klamath Business Directory

Doctors: R. I. Hall, M.D., Physician and Surgeon... Music: Z. Peters—Piano, Violin... Optics: Glasses fitted, Soule Sanitarium... Turkish Baths: Massage, Colonic Irrigation... Typewriters: School Trained Mechanics... Work for Necessities: Middle-aged man and wife want work on ranch... Hogs Higher on Frisco's Market: South San Francisco, Sept. 14 (AP)—Hogs—700, including 240 direct, about 100 pigs for government purchase...

National, Local Markets

BUTTER MART IN GENERAL WEAK TONES

PORTLAND, Sept. 14 (AP)—In line with the general weakness of the butter market, prices declined locally. Butterfat dropped 3c, effectively today, to 19c Portland delivery and 17c at country delivery points. The produce exchange lowered extra 2c to 20c, standards 1 1/2c to 19 1/2c, prime grade 1c to 19 1/2c and firsts 3/4c to 18c. The coast market has a general undertone of weakness. Coast storage holdings stand at the huge total of 10,821,000 pounds compared with 6,654,272 pounds at the same time a year ago. Holdings were declined but little from a week ago when they totaled 10,869,537 pounds. Eggs Unchanged. The lower prices and cooler weather along the coast should have a stimulating effect on the retail movement and give the primary market a better tone. Egg values were unchanged. The market here looked about steady, 24c on extras and 31c on standards. Large and medium supplies were reported in good demand. Local and outside buying were both reported to maintain a consistent volume. No material changes have taken place in the cheese market locally. Prices were unchanged and the market fully steady. Storage holdings at coast points total 4,748,882 pounds as compared with 3,711,630 pounds a year ago. Market Steady. Eugene cents arrived on the market in quantity and were offered fully steady at 90c to 11c the crate. The trade had some supplies of Tokay grapes for offering at \$1.25. Other kinds were unchanged. Prospects were for excellent quality celery from the Troutdale section. It is running in good supply. Receipts were moderate and retail demand moderate. Prices generally unchanged. BOSTON WOOL MARKET BOSTON, Sept. 14 (AP) (U.S. Dept. Agr.)—Trade in domestic wool is more active and practically all grades are having some sale. Medium qualities are very strong while the finer grades show a strengthening tendency. Fine Ohio belton wool has been sold at a fraction above 33 cents in the grease. French combing 64s and finer Ohio and similar fleeces bring 28-29 cents in the grease. Twelve months Texas wools bring 75-75 cents scored basis for average lines and 79-80 cents for good stuff. The Prince of Wales is an amateur magician and is particularly good at sleight-of-hand and card tricks.

Stock Market Quotations

NEW YORK, Sept. 14 (AP)—Spurred by a revival of inflationary psychology, stocks galloped higher today. The market was buoyant and displayed indications of resuming the recent advance. The forward movement met some resistance, although mining issues and some specialties maintained a rather buoyant tone. The close was firm. Approximately 2,900,000 shares changed hands. With leading foreign exchanges again moving up against the dollar, and grains and other commodities exhibiting renewed life, demand for equities developed early. Most stocks were strong and around their peaks at the close. Homestake Mining shares got up about 19, U. S. Smelting & Cerro de Pasco, American Smelting, International Silver and Howe Sound gained 2 to 3. National Distillers, U. S. Industrial Alcohol and American Commercial Alcohol held advances of 1 cent. Gains of 1 to 3 points were retained by American Telephone, Chrysler, Case, Deere and Allied Chemical. The rails were just about even, while the utilities were somewhat heavy. Consolidated Gas, Public Service of New Jersey and North American sagged fractionally to a point or more. Today's closing prices: Air Reduction 105 1/2, Alaska Juneau 30, Al. Chem. & Dye 140 1/2, American Can 92 1/2, American For. Pow. 43, A. T. & T. 131, American Tob. B 19 1/2, Anaconda Copper 95 1/2, Eastman Kodak 48 1/2, Atlantic Ref. 30 1/2, Bendix Aviation 19, Bethlehem Steel 39 1/2, Borden Co. 26 1/2, Burr. Adding Machine 18 1/2, California Pack 28, Canada Pacific 10 1/2, Case, J. I. 80 1/2, Caterpillar Tractor 45 1/2, Eastman Kodak & Ohio 48 1/2, Chrysler Motor 17 1/2, Col. G. & E. 17 1/2, Commercial Solvents 20, Commonwealth Southern 22, Continental Can 60 1/2, Corn Products 88, Curtiss Wright 3, Drug Inc. 42 1/2, Dupont & De N. 43 1/2, Eastman Kodak 48 1/2, Elec. Auto Lt. 28 1/2, E. I. Pow. & Lt. 29, General Electric 34, General Foods 25 1/2, General Motors 34 1/2, Gillette Razor 15, Gold Dust 23 1/2, Homestake Mining 31 1/2, International Harvester 41 1/2, International Nickel 20 1/2, I. T. & T. 108, Johns Manville 37, Kennecott Con. Cop. 27 1/2, Kroger Grocery 37 1/2, Libbey-Oxyden 32 1/2, Liggett & Myers B 97, Liquid Carbide 35, National Brands 23 1/2, Lorillard Tob. Co. 23 1/2, Monty Ward 25 1/2, National Motor 24 1/2, National Dairy Products 18 1/2, National Distillers 107 1/2, National Pack & Lt. 13 1/2, National York Central 208, North American 61 1/2, Pacific Gas & Electric 21 1/2, Packard Motor 47 1/2, Penney, J. C. 49 1/2, Penn. R. R. 37 1/2, Phillips Pet. 35 1/2, Public Service New Jersey 35 1/2, Pullman Co. 61, Radio Corp. 98, R. K. O. 98, Rem. Rand 54, Reynolds Tob. B 59, Sears Roebuck 44 1/2, Shell Union 30 1/2, Southern Pacific 21 1/2, Standard Brands 23 1/2, Standard Oil California 42, Standard Oil New Jersey 42, Studebaker Co. 61, Texas Corp. 24, Texas Gulf Sul. 29 1/2, Union Carbide 49 1/2, Trans-American 74, Union Pacific 133, United Aircraft 39, United Corp. 74, United Gas Imp. 17, U. S. Indus. Alcohol 77 1/2, U. S. Rubber 158, U. S. Steel 152, Vanadium 262, West. Elec. & Mfg. 45 1/2, Woolworth 39 1/2

WHEAT RALLIES TOWARD FINISH

CHICAGO, Sept. 14 (AP)—Sufficient selling pressure to wipe out early gains in wheat prices developed late today, but rallies ensued at the finish. The late selling was attributed largely to sources northwest and appeared to result from hedging against purchases of rural holdings in that section. Something of an offset was seen when demand from eastern mills, 550,000 bushels being taken by one eastern miller interest alone. Wheat closed unsettled, 1c to 1 1/2c above yesterday's finish; corn unchanged to 1c lower; oats unchanged to 1c up, and provisions at 10c to 35c advance. CHICAGO GRAIN CHICAGO, Sept. 14 (AP)—Wheat, No. 2 hard 89 1/2c to 90c; No. 2 mixed, 89c to 89 1/2c; No. 2 yellow, 49c to 49 1/2c; No. 2 white, 50 1/2c to 51 1/2c; Oats, No. 2 white, 37 1/2c to 38c; No. 3 white, 36c to 37 1/2c. Rye, no sales. Barley, 48c to 75c. Timothy seed, per cwt., \$5.25 to \$5.50. Clover seed, per cwt., \$5.00 to \$10.25. Lard, \$5.77. Bellies, \$5.75. PORTLAND GRAIN PORTLAND, Sept. 14 (AP)—Wheat—Open High Low Close May .79 .79 .79 .79 September .69 .70 .69 .70 December .74 .74 .74 .74 No. 1 Big Bend bluestem .79 Cash wheat Dark hard winter, 12% .79 Dark hard winter, 11% .71 Soft white .69 Western white .69 Hard winter .69 Northern spring .69 Western red .67 Oats, No. 2 white, \$22.50. Corn, No. 2 yellow, \$23.50. Millrun standard, \$17.00. Today's car receipts: Wheat, 51; flour, 13; corn, 1; oats, 11, hay, 3. Stock Averages (Copyright 1933, Standard Statistics Company) Thursday .81 52.6 52.7 52.6 Prev. day .78 52.5 52.5 52.3 Week ago .75 50.2 50.2 50.2 Year ago .68 39.3 39.7 39.3 3 years ago .67 109.0 101.0 101.6 High, 1932 .75 52.8 52.8 52.8 Low, 1932 .72 51.8 51.8 51.8 High, 1932 .72 51.8 51.8 51.8 Low, 1932 .62 47.4 49.3 47.4

Portland Produce

PORTLAND, Sept. 14 (AP)—Butter, prints, extras, 21c; standards, 20c. Buttermilk, Portland delivery, A grade, 19c per lb.; farmer's door delivery, 17c per lb.; sweet cream, 5c higher. Eggs, Pacific poultry producers' selling prices: Overstated, 26c; extra, 24c; standards, 21c; medium, 21c; pullets, 14c per dozen. Buying prices by wholesalers: Fresh extras, 21c per dozen; mediums, 17c per dozen; undergrades, 13c; pullets, 13c per dozen. Cheese, 92 score Oregon triplets, 11c; loaf, 12c per lb. Brokers will pay 1c below quotations. Milk, contract price, 4%. Portland delivery, \$1.70 per cwt. B grade cream, 37c per lb. Country meats, selling price to retailers, country killed hogs, best butchers, under 150 lbs., 7c to 8c; vealers, 70 to 100 lbs., 7c to 10c; spring lambs, 10c to 11c per lb.; yearlings, 4c to 5c per lb.; heavy swine, 2c to 3c per lb.; medium cows, 2c to 3c per lb.; canner cows, 2c to 3c per lb.; bulls, 4c to 5c per lb. Mohair, buying price, 1923 clip, 15c per lb. Casaca bark, buying price, 1923 peel, 32c. Hops, nominal, 1923, 40c to 45c per lb. Live poultry, Portland delivery, buying prices, colored fowl, 4 to 6 lbs., 13c; over 6 lbs., 12c; spring pullets, under 3 1/2 lbs., 14c; roosters, over 3 1/2 lbs., 14c; Leghorn fowls, over 3 1/2 lbs., 8c; under 3 1/2 lbs., 8c; broilers, 13 to 2 lbs., 15c; 2 lbs. and up, 14c; stage, 8c; roosters, 6c; pkin ducks, 10c; colored ducks, 6c; geese, 6c. Onions, Walla Walla, \$1.35 to \$1.40 per cental. Potatoes, local white and red, \$1.35 to \$1.50 per cental; Yakima, \$1.50 to \$2.00. Cantaloupes, Dillard standard, \$1.00 to \$1.25; Yakima standards, 75c to 90c per crate; Dalles, 75c to 90c per crate. Wool, 1923 clip, nominal. Willamette valley, 22c to 25c per lb.; Eastern Oregon, 16c to 21c per lb.; Southern Idaho, 16c to 20c per lb. Hay, buying price from producer, alfalfa, No. 1, new crop, \$17.00; clover, No. 1, \$14.00; Willamette valley timothy, \$15.00; Eastern Oregon timothy, \$15.00; oats and grain, \$15.00 per ton. Chicago Livestock CHICAGO, Sept. 14 (AP) (U.S. Dept. Agr.)—Hogs: 45,000; active, unevenly steady to 10c higher; good to choice 180-230 lbs. \$4.80-4.70; top \$4.75; some \$2.90-3.50. Cattle: 5,500; fed steers and yearlings steady to strong; instances 10-15c higher; heifers firm to shade higher; cows more active, medium weights 7-9, largely \$5.25-6.25, market heifers to \$6.10 and light offerings \$6.25; good and choice vealers \$3.00-4.50. Sheep: 18,000; practically none doing; sellers asking steady prices and refusing to even and rather lower early bids, extreme top early 75c; bids \$7.50 downward; sheep slow.

Lost and Found

STRAYED OR STOLEN—Two cows, one branded diamond on right side. From Altamont Thursday afternoon. Notify M. O. Bates, care Pelican Bay Lumber Co. 0990

General Notices

Peoples Warehouse Furniture and Household Goods Storage—Packing—Crating—Shipping. "If Storable, We Store It" 0723

Painting

PAINTING, decorating, papering, estimates on any job, large or small. Phone 107. J. L. New man. 3309

Radio Service

RADIO SERVICE of all kinds. Wm. Long, 1406 Lookout St. Phone 1525. 818

Personals

JOHN HIEPICH—I would like to hear from you if you are still in Klamath Falls. Please send your address. Bill J. Hiepich, 248 Main St., Watsonville, Cal. 0726

Madam Maza

MADAM MAZA—Readings daily. Klamath Falls Auto Park, cabin No. 3. 1036

Readings

READINGS daily—521 Oak St. 06c

Transportation

Travel By Stage Shortest Route to PORTLAND \$5.90 one way SEATTLE, \$7.90 one way SPOKANE \$4.00 one way Via Bend and Wapinitia. Leave Greyhound Depot at 12:30 p. m. daily. Phone 1530.

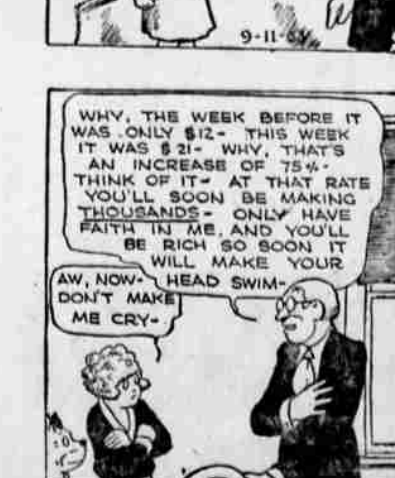
Situations Wanted

WOMAN wants any kind work or plain sewing in or out of town. 1575 Portland. 1194

Furnished Rooms

FURNACE HEATED bedroom in modern home. Phone 8152. 1034

LITTLE ORPHAN ANNIE



Hogan, Stoddard Capture Honors In Golf Tourney

PORTLAND, Ore., Sept. 14 (AP)—Medalist honors in the annual Oregon golf association championship that opened here yesterday were divided by the long driving Eddie Hogan and Max Stoddard, both of Multnomah club, Portland, with par 72's. Hogan blazed his way around the Portland golf club course in 34-38 while the youthful Stoddard, just out of the junior ranks, had a pair of 36's. J. Wilson Johnson, Eugene, Ore., was right behind the leaders with 38-35 for a 73 and one over par and was followed by the veteran Rudie Wilhelm who chalked up 37-34 to tie with James Crowell, Columbia club, Portland. Two former Walker cup stars came right behind, Dr. O. J. Willing with a 75 and Don Moe scoring a 76.

Lindberghs Delay Return To U. S.

STOCKHOLM, Sweden, Sept. 14 (AP)—Colonel Charles A. Lindbergh said today that he and Mrs. Lindbergh probably will remain two more days in this country and then sail for the United States. The Colonel will make a final report on a proposed air route across the North Atlantic by way of Greenland, after reaching New York.

Held in Murder of Jeweler



Bearcats Start Practice Friday For O.S.C. Tilt

SALEM, Sept. 14 (AP)—A speedier attack with alternating backflips—proving material is available—is the gridiron plan of Coach Ray S. "Spec" Keene of Willamette University. Practice starts tomorrow. Connors and Welser at tackle, Kaiser at end and Grannis at center are regular linemen from last year's return. Oravec, Frantz and Olson are regular backfield men returning, together with Williams and Cannady, who saw considerable action last year. Several other reserves will be on hand. The Bearcats open their schedule against Oregon State at Corvallis Sept. 22, leaving only a week for preparation. In addition to its regular northwest conference schedule, Willamette will play Southern Oregon Normal, Oregon Normal of Monmouth and Columbia University of Portland.

Cinema Star

Cinema Star puzzle section including a crossword puzzle grid and clues.