

MONTGOMERY WARD TO OPEN

Employees of Store Named By Manager; Doors to Open Today

This morning at 8 o'clock, Montgomery Ward and Company store, located in its temporary location, 226 South Sixth, will open for business, carrying a stock to exceed \$100,000.

H. A. Newman, manager, with several officials of the company and some thirty capable sales people, will greet the public.

E. H. DeVore, general superintendent for the Portland territory; H. D. Barber, superintendent of display and equipment; I. Gravelot, auditor out of Chicago headquarters; William Wade, head of transportation and adjustment; K. Ward, field superintendent and A. Schaefer, card writer, will remain for the opening today.

In the basement, where more than 500 square feet of space is utilized, one of the main departments is that of automobile accessories and tires, yesterday a carload of tires were being arranged on tire racks at the rear of the large room.

Other departments of the basement floor include plumbing, electrical fixtures and accessories, hardware and sporting goods.

The furniture department, one of the largest departments of the chain stores, will not be complete in the present location, because of lack of space, however stoves, washing machines, radios and many other furnishings are to be found.

"Anything a customer might wish to have on order from our main branch can be handled through the office," Mr. Newman, manager, stated.

On the main floor, which covers 5000 square feet, attractively arranged, carrying out the Montgomery Ward style, are found men's furnishings, shoes, hosiery and lingerie; notions, dry goods and toiletries; house furnishings and numerous other departments.

Chain stores of the company located in Oregon include: Klamath Falls, Eugene, Corvallis, Salem, Astoria, Pendleton, La Grande, Baker, Roseburg, Portland, with leases about to be closed on several other locations in towns throughout the state.

With the opening of the local store, the chain has grown to 24 since started less than two years ago. This store is one of the territorial chain of Oregon, Washington, Idaho and Montana.

Mr. Newman, manager, announced the following sales force, which is made up almost entirely of Klamath Falls men and women.

Mason in Charge.
George C. Mason, experienced clothing man, will have charge of the men's furnishing department for the store with Arthur Foglar, Loren Calhoun and Jack Campbell as salesmen.

Mr. Palmer in Charge.
Mr. Palmer in the hardware department along with Phillip Wood and Walter Shearer.

Reg. Thomas will serve as shipping clerk for the entire store.

Effie A. Meyer takes charge of the house furnishings department. Maude Mason will be saleslady in this department.

H. L. Clerin, coming from the Portland house, will be acting assistant manager to H. A. Newman, manager.

For Frigidaire, see E. H. Jefferson, 422 S. 6th St., phone 3552, adv.

Moose to Form Male Chorus

For the purpose of selecting officers and completing final plans for the organizing of a male chorus, which is to be known as Moose Male Chorus, a meeting has been called for Monday evening at eight o'clock in the chamber of commerce.

Mrs. Minerva Brown, teacher of voice will direct the chorus. Mrs. W. D. Cofer will be accompanist.

Recently a dozen or more men interested in the forming of the chorus met at the home of Mr. and Mrs. L. E. Brown on Lincoln to discuss plans.

It is not necessary for a member to be affiliated with the Moose Lodge in order to be active in the chorus.

of the main departments on the first floor, J. D. Fosket will be manager. Dutch Caldwell will be in this department to greet customers, along with George A. Gesme and A. A. McDonald.

Wanatah Coons is to have charge of hosiery and lingerie. Others in this department will include Mae Fleming and Amelia Tidwell.

Leah White will have charge of notions. Agnes Carlisle and Thelma Gunn are also salesladies of this department.

Hattie Evans has been named as manager of the dry goods and toiletries departments. Myrtle Ackerman and Mable Dunn will also assist in these departments.

Office Force.
The office force includes: Catherine Ackerman, office manager; Clara Ellis, cashier; Lillian Kincaid, cashier.

Mrs. E. A. Newman, wife of the manager, Genevieve Palmer and Omega Peak will also serve as cashiers tomorrow.

Robertson Has Ties.
Delmar Robertson takes charge of the auto accessories and tires in the basement. He is being trained for this department under William Wade, traveling tire adjuster.

With Mr. Robertson in this department, Melbourne Post, J. R. Henry and A. F. Stutz will serve as salesmen.

C. A. Wright will have charge of the plumbing department.

J. U. Melges is to be in the sporting goods department, which carries a complete line of sportsmen's outfitting.

P. L. Palmer, experienced hardware man of Portland takes charge of the hardware department. He will also serve as general manager of the basement.

Rufus Guillen will work with Mr. Palmer in the hardware department along with Phillip Wood and Walter Shearer.

Reg. Thomas will serve as shipping clerk for the entire store.

Effie A. Meyer takes charge of the house furnishings department. Maude Mason will be saleslady in this department.

H. L. Clerin, coming from the Portland house, will be acting assistant manager to H. A. Newman, manager.

For Frigidaire, see E. H. Jefferson, 422 S. 6th St., phone 3552, adv.

New Funeral Car of Klamath Undertaker Arrives in City



Beautifully upholstered in Chase's velour mohair, the motor funeral car of black and dustproof gray, recently purchased by the Earl Whitlock funeral home, Pine avenue at Sixth, arrived in Klamath Falls Thursday evening.

Wilton carpet covers the floor of the beautiful car. The flower tray, tilting and removable, is of solid walnut. High grade hardwood and walnut window moldings produce a handsome interior. The model is a straight eight

with Continental Red Seal, 80-horsepower motor, Stromberg carburetor, other standard units and with Watson rubber flow stabilizers. The Lockheed hydraulic 4-wheel internal expanding brakes are used.

The car length is 17 feet, six inches; width overall, 5 feet nine inches; height, 6 feet 11 inches. The rear compartment depth, 7 feet, nine inches; width, 50 inches and height 53 inches. Rear door opening, 34 inches. Height to sillings produce a handsome interior. The model is a straight eight

Klamath High News Notes

The following articles, special to the Klamath News, are written by the students in journalism at Klamath Union High School.

Alidene Harris, Editor This Week

TYPING CONTEST TO BE AT ASHLAND

Klamath high school will be well represented Saturday, April 19, at a district commercial contest to be held at Ashland.

There will be four groups represented: first year typing students, second year typing students and first and second year shorthand students. Each group will be represented from K. U. H. S. by two students, respectively.

There has been chosen three students for each group, one of which will be eliminated next week in an exhibition before the student body assembly.

Those participating in the elimination contest are: Advance typists, Frances Palmer, Marlow Smith and Thelma Teare; advanced shorthand, Mabel Moore; beginning typing, Helen Cofer, Eleanor Motz and Josephine D. Harbide; beginning shorthand, Anne Noll and Verne Zatzman.

STAGE EQUIPMENT TO BE PURCHASED

Equipment for the high school stage will be bought with the money from the senior play, it was decided by the class, at a meeting held last Wednesday.

A committee was appointed to select different articles to be presented to the class for approval.

There was also much discussion as to whether the seniors should wear caps and gowns for graduation, but it was finally decided that they would not.

The proceeds from the senior play given April 5 and 6 were \$196.

FASHION SHOW HELD AT SCHOOL

A fashion show featuring the latest models in dresses for girls and women was given before the girls' league of the high school yesterday afternoon.

Amena Elliott Webster of Marshall Field's department store in Chicago, talked on "Fashions and Fabrics of the Spring," while Gertrude Lindry, Lillian Mathers, Alidene Harris and two outside mannequins displayed the beautiful frocks.

RESULTS TOLD OF STUDENT ELECTION

Harold Robertson, of the conservative party, was elected

Old newspapers for sale at the News office.

Drink enough milk - eat enough milk desserts

YOU can't have your full share of vitality without milk, and the children can't grow without it. A quart a day for children, a pint a day for grown-ups—so you serve the tall cool glassfuls.

Then if you are ingenious, you stir a little milk over a fire and make delicious custard... you put ice cream on your menu... you whip up a delicious chocolate drink at times.

Some time try Chocolate Froth. This takes a level teaspoon of sugar, mixed in the bottom of the glass with 1½ teaspoons of cocoa and a few drops of milk, till smooth. Then add a few drops of flavor, fill the glass to the brim with milk, and shake the whole delightful drink in a jar or shaker.

The sugar blends the chocolate and milk flavors—just as it blends the flavors of other combinations of healthful foods. It is an ideal flavor itself—the best-liked in all desserts. Use sugar to induce your family to take their full portion of milk, cereals, and fruits. The best cooks are generous with sugar. The Sugar Institute.

ROSE RANDALL IS SENTENCED

Given Five-Year Term in Prison, Paroled on Conditions

Conditional freedom faces Rose Randall, attractive young woman, who pleaded guilty yesterday to the charge of larceny.

Mrs. Randall, whose husband, William Miles Randall, received a sentence of three years in the penitentiary, was sentenced to five years in the state penitentiary by Judge W. M. Duncan and then paroled to Mrs. Clara J. Upton, Salem, connected with the Pacific Protective Society.

"You are paroled," stated Judge Duncan, "on the condition that you remain away from Klamath county during the parole period, and on the further condition, that you report, once each month, to Mrs. Clara Upton of Salem."

The young woman heard the sentence silently and then without other than a melancholy shrug of her shoulders, returned to the county jail in the custody of Jailer Ed Rae.

Mrs. Randall and her husband carried on bad check operations in Klamath county using a photostatic stolen from a Klamath lumber company. They had been arrested and convicted in Walla Walla, Wash., on the same charge before coming to Klamath.

REHEARSALS START FOR SACRED CONCERT

Rehearsals are already underway for the Sacred Concert to be given at The First Christian church on the evening of May fifth, which is the first day of National Music Week.

The concert is to be given by the students who will have charge of city affairs next Monday.

STUDENTS WORK FOR BETTER GRADES

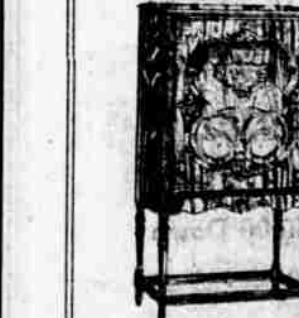
The high school is sponsoring many different activities to aid students to get better grades. The largest organization is the honor society. In order to be inducted into the honor society, a student must carry a semester average of "A".

There is a pennant given to the room which has the highest average at the end of each six weeks' period. The room which receives it keeps it until they leave another room ahead of it. Then there is also "King Solomon" a silver cup, given to the class which shows the greatest increase in grades.

Aside from all this, "The Krater," the school paper, has a column called the honor column, and in this are placed the names of students who have done exceptionally good work in their classes.

The various teachers also have methods of encouraging students to get better grades. E. R. Derry, instructor in biology and general science, says the best method he knows to get a student to do good work is through competition.

Airline RADIO



Light Socket Operated One Dial—8 Tubes CASH PRICE \$137.00

Without tubes, ready to attach. No batteries, no trouble. Beautiful Spanish cabinet. Super Dynamic Speaker in cabinet shown. Fine tone, selectivity, distance.

OPENING DAY FEATURE Good Quality Brooms

MONTGOMERY WARD & CO.

225 S. Sixth St. Klamath Falls, Ore.

the choir of The First Presbyterian, First Baptist, First Methodist, Mormon and First Christian churches.

Numbers will be rendered by the individual choir. The numbers by the combined choir will also be heard.

For results see News Class Ad.

Let's Go Fis hin'



NOW take an Old Timer's advice... good lures are needed to "make the big ones strike, and good lines to hold 'em. Come to Ward's and prepare yourself for some real sport. Here's exclusive high quality fishing tackle at an extremely low cost.

VISIT Montgomery Ward & Co. Temporary Store SATURDAY, April 13th 8 a. m. 8:30 p. m.

FISHING TACKLE

What a battle he puts up when he's caught "oh boy! But that let's go to Ward's and get some good fishing tackle, while we get the best for less.

New Precision Level Winding Reel, \$3.65
Quadruple multiplying, chromium plated. A \$4 value.

New "Sturdi-Bilt" Tackle Box \$2.98
A popular two-tray box at an unusually low price.

Black King Casting Line
You cannot buy a better hand-braided, water-proof Japan silk line at any price.

Test 1 Spool 2 Spools
14 lbs. \$.89 \$1.78
26 lbs. 1.45 2.90
39 lbs. 1.66 3.30

A large assortment of other quality tackle carried in stock at exceptionally low prices.

Quality Split Bamboo Fly Rod, \$1.85

4-piece rod, complete with bag. Usually retails for \$1.00.

Gasoline Camp Stove \$9.15

The finest three-burner camp stove made. Small and convenient when folded, large and spacious when set up. Well made of quality material.

Royal Coachman Wet Flies, 3 for 25c

Numbers 7 and 10 Black Gnat Proffer, Brown Hackle and other popular flies.

Camp Cot \$3.60

Easiest and quickest to set up or fold away. Full 76x27 in. size, brown duck top, hardwood frame, joints reinforced with steel plates.

MONTGOMERY WARD & CO.

225 Sixth Street Phone 670 Klamath Falls, Ore.

Every-Day Prices

on HARDWARE and Household Necessities

- 6-inch Heavy Strap Hinges with screws, per pair 30c
- 8-inch Heavy Strap Hinges with screws, per pair 40c
- Long handle, round point Shovels, Each \$1.50
- Garden Rakes, 14-inch, Each \$1.00
- Buck Saws \$1.50
- O'Cedar Mops Small 65c
- O'Cedar Mops Large \$1.25
- O'Cedar Polish 12-oz. 45c
- 48-inch Ideal Poultry Netting, 10 rods \$5.25
- 36-inch Hex Netting, 1-inch mesh, 150 feet \$6.65
- Mortise Door Locks, brass or copper finish 70c
- 3 1/2 x 3 1/2 regular Door Butts 25c
- Crown Bottle Caps, gross 25c
- American Gas Lanterns \$6.50
- 14-in. Stillson Pipe Wrench \$1.20
- 8-inch Adjustable Wrench, same as Crescent. 65c
- All Copper Wash Boiler No. 8 \$4.55
- Betty Bright Self-Wringing Mops, Each \$1.00

Roberts & Harvey HARDWARE 422 Main St. Klamath Falls, Ore.

RIVERSIDE Tires

Guaranteed for 16,000 Miles

Don't Buy 'Conversation' BUY MILEAGE—definite and assured

Before you buy your next tire, be sure what protection you get. What assurance you have that the tire you buy will deliver the full mileage you expect. When you buy "Riverside" you actually buy a guaranteed number of miles. If you don't receive them, you get a new tire and are charged only for the actual mileage received.

| Tire Size | Guaranteed for | Tire Price | Molded Circle Tubes |
|-----------|----------------|------------|---------------------|
| 28x1.40 | 16,000 miles | \$ 6.15 | \$1.25 |
| 28x1.75 | 16,000 miles | 8.85 | 1.50 |
| 30x1.50 | 16,000 miles | 7.10 | 1.40 |
| 30x1.75 | 16,000 miles | 8.85 | 1.55 |
| 30x2.00 | 16,000 miles | 8.85 | 1.60 |
| 30x1.50 | for | Prices | Tubes |
| 30x1.50 | 16,000 miles | \$ 9.25 | \$1.49 |
| 30x1.75 | 16,000 miles | 12.00 | 1.80 |
| 30x1.75 | 16,000 miles | 12.95 | 2.15 |
| 31x1.75 | 16,000 miles | 12.60 | 1.85 |
| 32x1.60 | 16,000 miles | 11.10 | 2.25 |
| 32x1.60 | 16,000 miles | 14.95 | 2.30 |

RIVERSIDE Tire and Tube Combination For Chevrolet and Ford Cars 29x1.40 Balloon Tire with Molded Circle Tube BOTH FOR \$7.25 30x1 1/2 P.O.S. Clincher Tire with Molded Circle Tube BOTH FOR \$8.45