

Automatic Windshield Swipe a Necessity



Unless you desire a bath every time you drive in the rain, it is advisable to equip your cars with an automatic windshield cleaner. The need for such a device is shown in the above photographs from the Western Auto Supply company.

The obscuring of the windshield by drops of water during a rain makes driving dangerous and hazardous and gives the driver a feeling of helplessness.

If the car is equipped with an automatic windshield wiper such weather holds no terror for the winter driver as the cleaner keeps the glass free from moisture and renders clear vision through the windshield.

The necessity for such a device is recognized by the majority of car manufacturers for automatic windshield cleaners are now appearing on most cars as standard equipment. Yet there are thousands of cars not equipped with such a device, according to L. R. Hiatt, local manager of the Western Auto Supply company.

"Automatic types that operate from the intake manifold are very popular, as such cleaners can be

set in operation to run fast or slow, according to weather conditions at the will of the driver," says Mr. Hiatt. "With the automatic cleaner it is not necessary to even remove the hand from the steering wheel once it is turned on. The problem of keeping both halves of the glass clean has been solved through the use of a double electric cleaner that sweeps complete half-circles and cleans the entire shield at one operation."

Check Over Spring Bolts More Often

It is a good practice to go over all the bolts and nuts of the car's springs about once a month and tighten any which have become loose. Many a "rattle" or "squeak" will be prevented by doing this. No matter how good the locking devices used to pre-

vent the nuts from turning, these bolts will loosen, as, because of the constant pounding to which they are subjected, they will stretch a little.

Exports Increase
United States automobile exports to Australia have increased 110 per cent in the past five years, according to the National Chamber of Commerce.

Tire Is Inflated While Car Runs

AKRON, Ohio, Nov. 26.—Will automobile science eventually devise means to inflate tires while running, with a gauge on the instrument board to record tire inflation, similar to gasoline and oil gauges? Such speculation is inspired by a device that inflates tires and keeps them at the required pressure while being tested for power transmission at the factory in Akron, where Miller tires are made. While running a tire at high speed on this machine, called a dynamometer, air is forced into the tire by the mere turning of a valve.

On a convenient instrument board, a gauge keeps accurate record of the air pressure in the tire. It is necessary to hold tires under test in this machine at a certain pressure that most accurate results may be obtained in determining power transmission. These laboratory tests are far more severe than every-day tests in actual service. In order to make tests deliver the greatest constructive information, conditions are made very exacting.

The purpose of these tests, according to Miller engineers, is to employ science to make even better tires. On the dynamometer tires show the amount of power, generated by an automobile engine, that is transmitted to the road at various speeds. Tires slip slightly at each revolution and friction results. Dynamometer tests show the amount of friction caused and the effect on the tire.

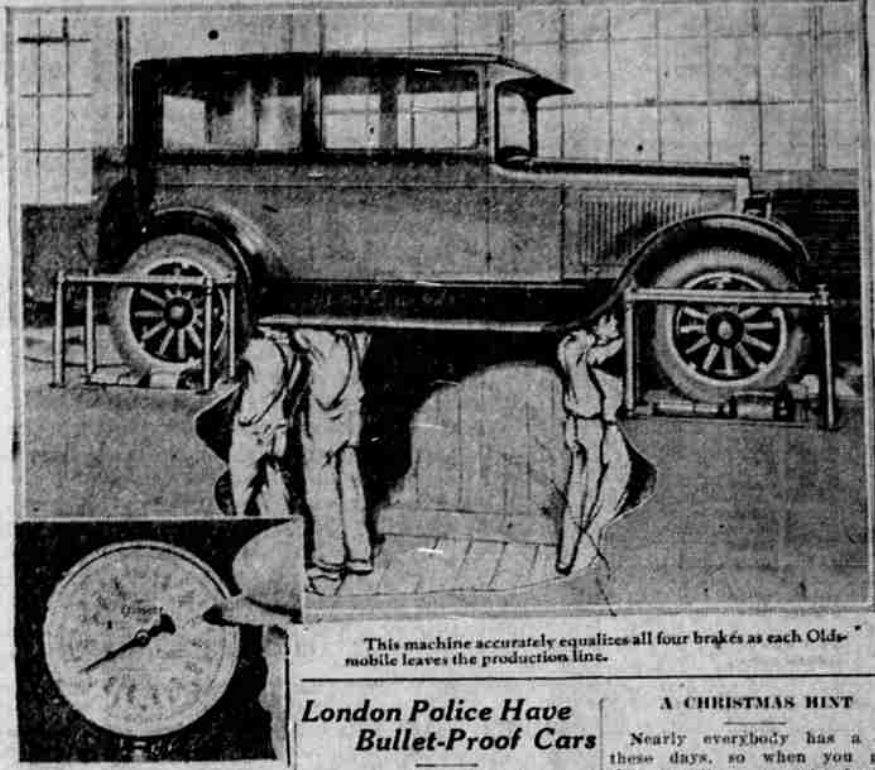
REPLACE THE FLAP

If the tire flap is cracked when the tube is removed a new flap should be installed, advises the Western Auto Supply company. The break will chafe the inner tube or pinch it causing a leak.

TO BEAT RECORD

Harry A. Miller, famous for his racing cars, has designed an engine that, he says, will exceed the record of 201 miles an hour established by Major Segrave.

Why Oldsmobile's 4 Brakes Act As One



This machine accurately equalizes all four brakes as each Oldsmobile leaves the production line.

Recently a visitor was inspecting the Oldsmobile factories. His tour ended in the shipping department, where part of the day's production was lined up in two rows a block long, separated by a 10-foot passageway. He and his guide, one of the engineers, were talking about one of the last inspection operations, that of adjusting the four-wheel brakes.

"Come with me," said the engineer, who escorted the visitor to the last car in one of the rows. They entered the car and the engineer lined it up at the end of the passageway. He accelerated to 35 miles, speeding down the line formed by the new automobiles. Nearing the end he removed both hands from the steering wheel and applied the brakes full pressure.

The car came to a graceful stop without swerving a fraction of an inch to either side.

"That would have been risky only a comparatively short time ago," remarked the engineer. "That was when brake adjustments were made by mechanics using gauges to determine the clearance between brake band and drum. Absolute accurate adjustment of all brakes was practically impossible."

"The brakes of every Oldsmobile are adjusted by means of the Cowdrey dynamic brake tester, which definitely and precisely indicates the exact braking effort developed by the brake at each wheel, thus enabling the mechanics, in making adjustments, to attain absolutely correct distribution of braking effort among the four wheels and perfect equalization between the right and left front wheel brakes."

"The brake tester is an electric motor driven dynamometer with a complete unit for each wheel. The four units are imbedded in the floor and each consists of an operating motor, speed reduction gears, driving roll and weighing mechanism."

"Each Oldsmobile as it leaves the production line is driven on the testing machine so that each wheel rests on a pair of the corrugated iron rolls which are used to transmit the power of the electric motor to the tire tread. The surface of the rolls produce the same co-efficiency of friction as a good concrete road and rotate at a slow speed to avoid taking advantage of the high self-energizing characteristics of Oldsmobile brakes, and to make sure that readings will not be inaccurate because of deceptive temperature rise of brake lining or drum."

"After driving the car on the rolls, the operator places the transmission control into neutral position, stops the engine and depresses the brake pedal a distance of 3 1/2 inches, here it is held by a gauge block. This distance is equal to 75 pounds pedal pressure."

"Under these conditions, with the road surface literally being pulled under the tires, the dial on the weighing scales of the respective units register accurately the pounds of 'road pull' created by the resistance of the engaged brakes. Four mechanics, working in a pit beneath the car, quickly and easily adjust each brake to the required figure, as indicated on the dial, insuring perfect equalization between the brakes at the left and right sides of the car."

"After the adjustment is made the brakes are released and the dial again read to make sure that none of the brakes drag on the drum."

"As a result, upon application of the Oldsmobile four-wheel brakes the car does not 'drag' to left or right and all four brakes build up to the point of maximum braking value simultaneously. That is why there was no danger of turning into either line of new Oldsmobiles when we applied the brakes after leaving the steering wheel free."

Windshield Rubber Must Be Replaced

If the rubber in the windshield has shrunk, it should be replaced at once, according to the National Automobile Club. Attempting to drive while rain is clouding the glass is a dangerous undertaking.

AUTOMOBILES INCREASE
Automobiles in Great Britain now total 1,756,000. This is an increase of 176,000 over the total of last year.

Guaranteed Used BUICKS

1926 Buick Sedan \$1050.00

1925 Buick Master Touring with glass enclosure and heater \$750.00

1926 Buick Coach \$900.00

1925 Buick Touring \$650.00

1926 Hup Sedan \$900.00

1925 Flint 40 with glass enclosure \$425.00

BUICK GARAGE

London Police Have Bullet-Proof Cars

A new fleet of bullet-proof automobiles equipped with radio receiving sets is being placed on the streets of London, England, at night to combat motor bandits. The cars of the "night-flying squad" will be able to communicate among themselves and with headquarters while on a chase.

KEEPS OUT THE RAIN

Closed car wings are a great help to winter drivers, according to information from the Western Auto Supply company. The windows may be kept open when the wings are adjusted to keep out the rain and wind.

For results use News Class Ads.

A CHRISTMAS HINT

Nearly everybody has a car these days, so when you give auto supplies, not only do you give useful gifts that are lasting reminders of your thought but also give pleasure to the entire family.

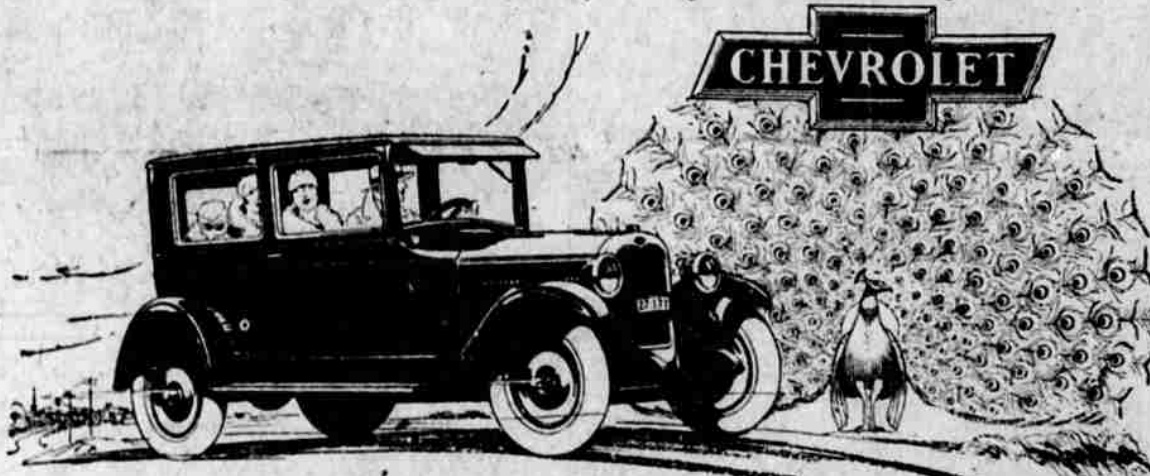
TWO BILLION A YEAR

The 400 manufacturing concerns comprising the Motor and Accessory Manufacturers' association employ 200,000 persons and have an aggregated output of about \$2,000,000,000 a year.

HOLD ANNUAL SALE

The second semi-annual "Week of Special Values" sale is being held at all Western Auto stores during the week of November 12-19.

for Economical Transportation



The World's Most Amazing Combination of Beauty, Performance and Low Price!

Offering the distinction and elegance of bodies by Fisher... exquisitely beaded and paneled, and finished in ultra smart colors of genuine, lustrous Duco—

—providing the superior performance advantages of a celebrated valve-in-head motor... the same type that has powered the winners of the world's greatest racing classics—

—and carrying the lowest prices ever placed on a modern, quality automobile—

—today's Chevrolet stands out unmistakably as the world's foremost combination of beauty, performance and low price!

Never before could you obtain such unquestioned smartness, such delightful riding comfort and such amazing performance—for such a

small investment. Here, in fact, are all the vital elements you want in a motor car—plus outstanding economy of ownership and operation.

Come in—and see for yourself! Select the Chevrolet model that best meets your requirements—and subject it to every test you know. Compare it with any other car at anywhere near its price—for beauty... for smartness... for elegance. Drive it—and learn the thrill of its performance and riding comfort.

Then you'll know why today's Chevrolet has climbed to unheard-of heights of popularity in every section of the country—shattering every existing record for the sale of gear-shift cars.

Come in today. We have a Chevrolet ready for you to drive!

The COACH \$595

- The Touring or Roadster... \$525
- The Coupe... \$625
- The 4-Door Sedan... \$695
- The Sport Cabriolet... \$715
- The Imperial Landau... \$745
- 1/2-Ton Truck (Chassis Only)... \$395
- 1-Ton Truck (Chassis Only)... \$495

All prices f.o.b. Flint, Michigan

Check Chevrolet Delivered Prices. They include the lowest handling and financing charges available.

LOCKE MOTOR CO.

W. R. LOCKE, Manager

8th and Main

QUALITY AT LOW COST

ATTENTION



We have installed a new Electric Vulcanizing machine and are now prepared to handle—

Vulcanizing and Tire Repair in the most up-to-date method.

We Give Service!

We give the best service and finest work anywhere and only ask you to give us a trial. Our prices are not higher than for ordinary quality work.

Our Seiberling Cord Prices:

30x3 1/2—4-ply Seiberling Cord	\$11.75
30x3 1/2—6-ply Seiberling Cord, extra heavy	15.85
32x4 1/2—8-ply Seiberling Cord, heavy duty	33.20
30x5—8-ply Seiberling Cord, heavy duty	40.00
33x5—8-ply Seiberling Cord, heavy duty	44.15
32x6—10-ply Seiberling Cord, heavy duty	61.30
32x6—10-ply O. S. Heavy Duty	66.55
Oldfield 29x4.40 Balloon Cord	8.40
29x4.40 Seiberling Balloon Cord	12.35
29x4.40 Seiberling Balloon Cord, heavy duty	15.75

Get Our Special Truck Users' Price

Balsiger Motor Co.

Exclusive Seiberling Agency for Klamath County.