

Landing Fields On Ocean To Be Soon Tried Out

WILMINGTON, Del., Oct. 12. (U.P.)—The dream of ocean landing fields strung across the Atlantic may reach a large-scale experimental stage by next spring.

While no contract has been awarded, E. R. Armstrong of the DuPont Company is proceeding with plans for construction of a large model of his floating sea-doms, which he hopes to have in operation before next summer.

Armstrong proposes placing the model in the Atlantic about 500 miles east of New York to study the effect waves and storms will have upon it. In appearance it is a platform lifted above the crest of the largest waves by a framework resting upon submerged pontoons.

Armstrong's plan is to construct about five seadomes and string them at 400-mile intervals across the Atlantic. Ship and bridge building corporations are said to be preparing estimates for construction of the seadomes.

DRIVER FINED FOR FIRING REVOLVER

Accidental discharge of a revolver on Main street near Sixth cost Ed. Sowell, taxi driver, \$5 yesterday.

He was arrested by police and released under \$5 bail.

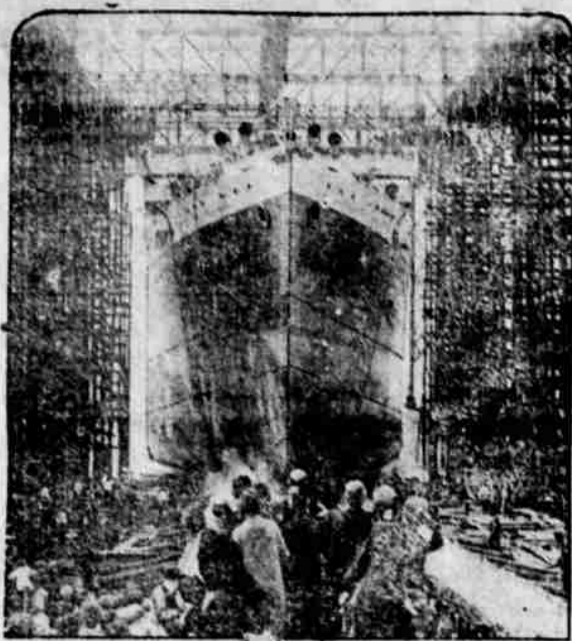
By paying \$100, S. L. Lee, arrested and convicted on a charge of possession of whiskey, won his way to freedom yesterday, after having served several days in jail.

When you have freight for Lakeview call Klamath Falls, Lakeview Stage Lines, care City Transfer Co. Phone 423, 11-61.

Here is the solution to the LETTER GOLF puzzle on page 4.

R	E	N	T
B	E	N	T
B	E	L	T
B	E	L	L
S	E	L	L

Down to the Sea She Slips



One of the largest passenger vessels ever launched in the United States is the S. S. California, here pictured slipping majestically down the ways at the Newport News Ship Building company's Virginia plant. It is to ply between New York and San Francisco through the canal. Sponsor of the California was Mrs. Roland Palmedo (below, left) daughter of P. A. S. Franklin (center) president of the International Mercantile Marine; the skipper is Captain Henry A. Candy (right).

'Despised Man' Seeks Freedom

(Continued from Page One)

conflicting evidence, at a time when the passions of war were at their highest pitch and the world still remembered how vividly nurse Cavell was sacrificed on the altar of patriotism.

Emaciated to the point where his angular body appears lost in the flabby prison clothing, his eyes sunken, his hair gray—Quien may yet lose the stigma that attaches to his name.

M. Roc, prison director at Clairvaux, believes with the league for the rights of man, that Quisen should get another trial.

Since the alleged denunciations of Edith Cavell was condemned to death in September, 1919, he has lived the life of a hounded animal, despised by his fellow prisoners who contend his crime of treachery to a patriotic woman was greater than murder, robbery and rape.

Lawyer Darmon, discussing his efforts to reopen the case, told the United Press:

Need Proof

"We cannot assert definitely that Quisen is innocent but the prosecutor never was able to produce absolute proof of his guilt. The court showed its doubts when, reviewing the case, it dropped the death penalty and substituted 20 years of imprisonment.

"We are now seeking to obtain grace. Later we will ask a revision of judgment."

Warden Roc is one of Quisen's strongest supporters. Convinced neither of the man's guilt nor innocence, he believes Quisen is a changed man and deserves another chance for a living life—not his present life of hell which finds the man shunned even by the lowest felon.

Quisen Weak

Even as he spoke to the United Press correspondent who found him in Clairvaux prison, Quisen was so weak that he slipped across the top of the warden's desk. With an effort he lifted himself and apologized:

"It's my rheumatism; they're getting worse and worse."

The warden's opinion of his man is indicated by the fact that he uses Quisen as a bookkeeper in the prison hospital, although he has been convicted four times for theft, embezzlement and fraud.

"I have just about had all hope, but I am an innocent victim of mistaken identity. I have a double in Brussels who was the real betrayer," Quisen said.

"I am anxious, however, to get a revision of judgment rather

Husband Slayer



Mrs. Lulu Ethel Gruber is on trial in Seattle, charged with the murder of her husband, Charles, who she admits slaying six years ago "in self-defense." For five years she kept the secret, then confessed. Seven married women are on the jury trying her.

CRITICAL OFFICER TO GET CALL-DOWN FROM WASHINGTON

SAN FRANCISCO, Oct. 12. (U.P.)—Major General Charles P. Summerall, chief of staff of the United States army, was suddenly ordered to Washington today, and it is believed in army circles here that he will be "spanked" for his utterly frank denunciation of the housing conditions of the army in southern California.

The sudden order to report to Washington comes on the heels of General Summerall's speech at San Diego Monday, in which he said that the housing conditions at the army posts in southern California were "disgraceful" and hardly better than "American troops would have encountered in German prison camps."

TO DECIDE POLICY

LOS ANGELES, Oct. 12. (U.P.)—Whether organized labor's policy on Boulder Dam is to be decided by the 400 delegates in session or by the 11 members of the executive council, will be determined at the American Federation of Labor convention here tomorrow.

Take advantage of the new Shelton permanent wave special at Alaine's Beauty Shoppe. Miss Morin permanent wave specialist. Work guaranteed.

JOINS REVOLUTION

PHOENIX, Ariz., Oct. 12. (U.P.)—Unofficial messages received in Mexican circles here tonight stated that General Gustavo Salinas, with a force of 600 men, was advancing upon the town of Nuevo Laredo, Tamaulipas, after burning two bridges on the Mexican National railway line south of that town.

Salinas, former head of aviation under President Calles of Mexico, is now associated with the revolutionary movement.

than grace to clear my name in memory of my parents who died heartbroken."

For Sale
Rod Locomotives
Meeting Government Requirements
Reasonably priced. Write or wire for specifications and prices.
DALLAS MACHINE & LOCOMOTIVE WORKS, Dallas, Ore.

SON BORN TO WIDOW

DALLAS, Texas, Oct. 12. (U.P.)—A son was born today to Mrs. William P. Erwin, widow of Captain Erwin, who lost his life in an attempted trans-Pacific flight to Honolulu in the Deto air race.

The child has been christened William P. Erwin, Jr.

TEACH CHILDREN

WASHINGTON, Oct. 12. (U.P.)—Principles of sex should be taught to children as young as six years, according to Robert C. Dexter, secretary of the department of social relations of the American Unitarian association, which is holding its biennial convention here.

GAIN IN SMARTNESS by NOVEL STITCHERY

From the robes of queens—
—from rare tapestries and ancient panels came the inspiration for this new and interesting stitchery on cuffed Kayser Gloves.

Kayser

SEE OUR WINDOWS!
BARNHART'S

LADIES' READY-TO-WEAR
McCarthy Bldg.—No. 118 North 7th

Commission Will Hold 1st Meeting

MEDFORD, Oct. 12.—(U.P.) John H. Carlin, speaker of the Oregon house of representatives, announced today that the first meeting of the recently appointed state finance commission would be in Salem, Oct. 17.

The commission, authorized by the last legislature to investigate property-tax relief and other state finance subjects, is composed of representative men from all sections of the state.

Junkers Seaplane To Hop Off Today

LISBON, Oct. 12.—(U.P.)—Junkers seaplane F-1230, piloted by Frederick Loose, planned to leave at dawn today for New York.

Aboard the plane besides Loose will be a crew of three and Lillie Dillenz, Viennese actress. The D-1230 was forced down near Lisbon last week on a flight from Amsterdam to the Azores. The original plans were to fly to New York with stops at the Azores and St. Johns, New Foundland.

MONTAG

CIRCULATOR

So wonderfully easy to keep clean and beautiful

Only a soft damp cloth is needed to keep the dust wiped off.

You cannot scratch the fine rich walnut grained finish any more than you can scratch a porcelain plate. It has three coats of baked-on porcelain enamel. And because the casing is of cast iron, instead of pliable sheet metal, it doesn't bend under ordinary conditions, and isn't subject to cracking.

That's all the result of Montag care and extra quality materials used in manufacture.

Montag knows from long years of experience here in the west, the extraordinarily rough usage,—the big banging chunks of coal or wood,—that any heating plant out here is liable to.

And that isn't all—

The inside of the Montag Circulator is designed and constructed scientifically to produce a larger volume of heat at less cost, to last indefinitely.

In the Montag Circulator, the modern heating principle of circulating warm air is adapted to a good-looking heating plant—that is portable, and think of what that means!

- No basement required—it fits right in with the living room furniture.
- No heavy installation cost to add to price.
- May be stored away in summer time if desired.
- Take it right along with you, should you move to another house.
- For farm or town homes without basements, and already built, it is ideal. Even in building a new home the expense of building a basement is not necessary.
- And its heating capacity is really remarkable, because the warmth is distributed by a current of air put into slow motion by the Circulator heater itself, throughout the entire home.

Outstanding improvements

- The inside—firepot, radiating dome, and ash pit—is of cast iron furnace construction, fitted together with self-sealing cup joints.
- The famous Montag oval firepot (17½ to 19 inches long at the grate) burns coal or wood with a greater efficiency and at lower cost than other types.
- The corrugated dome nearly doubles the radiating surface.
- The baffle plate keeps the heat from rushing up the chimney—increases the "fire travel", gives more heat from the same fuel.
- The fire and ash pit doors are ground to fit tightly, making it possible to hold fire for 24 hours or longer.
- The humidifier is scientifically placed, allowing sufficient moisture for healthful warmth without overburdening the air with vapor. It is easy of access and of ample capacity for 24-hour service without refilling.
- Large ash pan means less frequent need for emptying.
- Ash pit is unusually deep,—allowing unrestricted draft.
- Smoke screen keeps smoke from rising when door is open for fueling or for a "hot spot" of direct heat to warm cold hands or dry damp stockings feet.
- Extra large fire door accommodates large chunks of coal or wood.
- And with all its big heating capacity—the slight free air space between dome and casing prevents overheating of the outer surfaces. This extra clearance allows the ascending column of air (taken off the floor) free circulation in large volume—free the circulator from any tendency to become "air-bounding".
- The cost of the Montag Circulator is low. Made in the west, excessive freight charges are eliminated, giving a larger measure of quality and lasting value.

Easy Terms

You Mr. Barber, you Mr. Candy, you Mr. Paul Hall, you Mr. Storekeeper, and you Mr. Homeowner who have no basements, we have a size for your particular requirements. Call and see them at your convenience. They are now on display.

Claud H. Davis, Furniture
"The House of Quality"
McCarthy BLDG. PHONE 581-W

Your money back instantly at your grocer's if you don't like Schilling's best. Your statement is enough. You keep the coffee. We pay the grocer.

Wings of the morning
wings of aroma from your cup
wings of flavor to your taste
wings of zest to your spirit

Schilling Coffee

Baking Powder + 19 Spices + 31 Extracts + Tea

Coffee Schilling