

### Chevrolet Making Tour of Western National Parks

To show motorists how easily and economically the great national parks of the west may be toured by automobile the Chevrolet Motor company recently sent out an imperial landau to go from one scenic playground to the other and gather data as to road conditions, hotel and camp accommodations and the wonderful natural attractions rewarding those who make the trip either wholly or in part.

Up to date the car has visited Zion national park in southwestern Utah, the Grand Canyon, Pipe Springs national monument, the great Kaibab national forest, Bryce canyon, Etes park, Colorado Springs, the Royal Gorge and Mesa Verde. It will soon head for Yellowstone and Glacier national parks, and proceed thence to Ranier national park, Crater lake, Mt. Lassen, Lake Tahoe, Yosemite and other wonderlands.

Early travel to all the resorts is said to indicate that this summer will mark the heaviest touring season ever known. The park-to-park tour of the Chevrolet has revealed that better road conditions than ever before will be encountered by tourists this season, with better accommodations as well. Ample rain-falls are reported to have put the parks of southern Utah and northern Arizona into their most favorable state for travelers.

In California the desert road is said to be in excellent condition; Nevada has improved its section of this road in very creditable manner. The short strip through the triangle of Arizona and north of the Colorado river is said to be in good shape at present, but with federal aid will be improved at an early date. In Utah road improvement is particularly noticeable, although detours will be necessary near the entrance to Zion park for another month, owing to road work.

Bryce canyon will eventually be made a national park, it is said. With its thousands of pinnacles of vari-colored limestone, it is described as ranking in beauty with anything in the great open spaces of the west. In the great Kaibab national forest the Chevrolet drove for 50 miles through one of the most splendid virgin forests of the far west. Hundreds of deer fed unconcernedly in the meadows, barely glancing at the passing automobile. Opportunities for camera work of the most delightful character abound on the national park trips.

### Popularity of New Studebaker Grows

The increasing popularity of the four passenger coupe is reflected in the announcement this week of the new Dictator sport coupe by The Studebaker corporation of America. The new model will appeal to motorists who desire a smart, compact yet roomy car for sport or town use. It embodies the intimacy of a two passenger coupe with the additional room offered by a comfortable rumble seat for an extra twosome.

The full-vision steel body is finished in two harmonizing shades of green, croatan green around the upper half and box elder green below, with a belt of blue deftly pin-striped in yellow. The color harmony is carried out in the interior by green mohair upholstery with broadface trim.

Ample comfort for the full quota of passengers is afforded by the wide deeply cushioned front seat, on which three find room without crowding, and the comfortable arrangement of the rumble seat. In both the driver's compartment and the rumble seat there is an unusual amount of leg room.

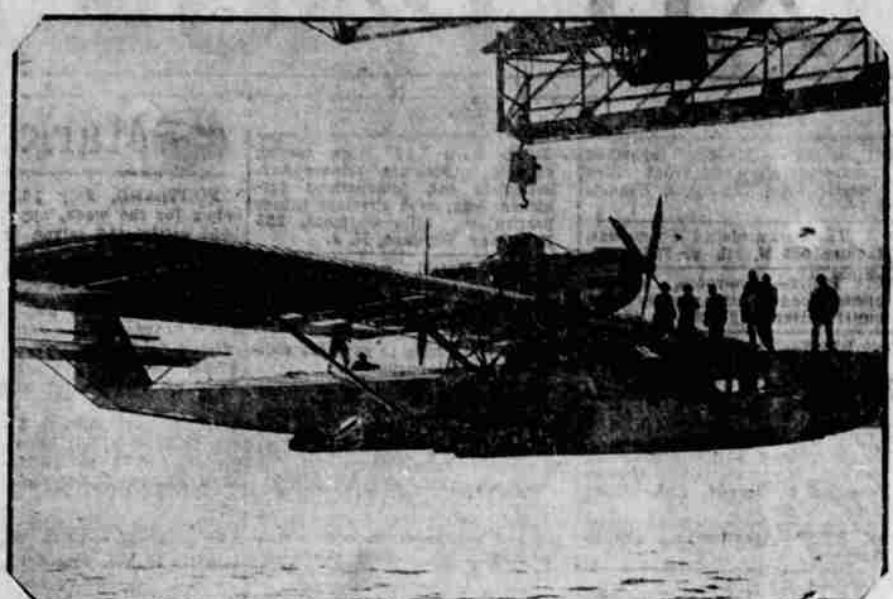
Among the many convenient features that distinguish the new coupe's design are a handy compartment for small parcels, etc., behind the upright cushion of the driver's seat and a storage space for golf bags and light luggage. This compartment is easily accessible through a door opening on the right side of the body just in front of the rear fender.

Other features that show thought on the part of the designers are found in the rear window between driver's seat and rear deck, which can be lowered to permit maximum ventilation or conversation with the passengers in the rumble seat. But one key is required for the coincidental lock for steering and ignition, the doors, spare tire carrier, rear deck, and small door into the storage compartment.

The sport coupe is mounted on the Studebaker Dictator chassis, powered with the famous Studebaker L-head motor. Ratings of the Society of Automotive Engineers show this coupe as the world's most powerful coupe of its size and weight—an assurance of the brilliant performance so much to be desired in a smart sport car.

The value of Studebaker's recognized ruggedness, long life and custom beauty is enhanced by the fact that more than \$100 worth of extra equipment is furnished as standard on the new coupe without increase

### Now Comes the 60-Passenger Flying Boat



The huge new all-metal Dornier "super-Wal" flying boat, with capacity for 60 passengers, is pictured above. The plane was tested recently at Friedrichshafen, Germany. It is capable of maintaining a speed of 180 kilometers an hour, and is equipped with two 500-horsepower Rolls Royce Condor motors in tandem. A plane similar to this will be used by Captain F. T. Courtney, British flyer, in his trans-Atlantic flight, scheduled for the near future.

### Precedent Swept Aside in Approval of New Nash Models

Sweeping aside all precedent in favor of the three entirely new series of Nash cars displayed by dealers throughout the country last week were given the greatest public reception ever recorded in the eleven years' history of The Nash Motors company. Outspoken approval and enthusiasm were voiced by thousands who crowded the Nash showrooms from New York to San Francisco and from Winnipeg to Palm Beach, and the public endorsement was made in the substantial form of record-breaking sales.

The lower and more sweeping body lines, the mechanical refinements, and the stunning new color combinations, were accorded unstinted approval by those who thronged the showrooms, and even greater amazement was expressed over the almost unbelievably smooth performance of the cars by those who had an opportunity to drive them.

"So emphatic and so overwhelming has been the public acceptance of the new advanced six, special six and standard six series," said E. H. McCarty, general sales manager of The Nash Motors company, "that this will be far the biggest July in the history of the company."

Telegrams, voluntary and spontaneous, from distributors, gave authentic reports of the reception on announcement day. These messages, coming in from all sections of the country, soon made it apparent there was no doubt about the public attitude, whether the cars were viewed on Broadway, New York, or Phoenix, Ariz.

"By actual count more than 6,000 people visited our own store today and our dealers also report big crowds," said C. B. Warren, New York distributor for Nash Motors. "This has been the greatest day in Nash history." The Warren-Nash establishment is only one of the 46 Nash sales quarters in metropolitan New York.

In Denver, 500 people visited the showroom before 8:30 o'clock in the

in the list price. Equipment includes nickel-plated bumpers front and rear, oil filter, the exclusive Studebaker no-draft ventilating windshield, four-wheel brakes, rear traffic signal light, hydrostatic gas-line gauge and engine thermometer on the dash, coincidental lock, automatic windshield cleaner, rear vision mirror, and twin beam search headlights controlled from the steering wheel. The Dictator sport coupe lists at \$1585 f.o.b. Klamath Falls.

Another new model announced at this time is the Dictator business coupe, also mounted on the Studebaker Dictator chassis, and listing at \$1485 f.o.b. Klamath Falls.

This new coupe was specially designed for the business man who desires a car of brilliant performance, economical operation, sturdy construction, and utmost riding comfort, without the sacrifice of smart appearance.

The business coupe will seat three comfortably on the wide driver's seat, which is upholstered in fine grain Spanish leather. The full vision steel body is finished in croatan green with a belt of robin's egg blue, pin-striped in yellow.

One of the many features which appeal to the driver who uses the car for business purpose is the unusually roomy rear compartment. It offers storage space of 21 cubic feet for sample cases or luggage, and is protected against dust and moisture.

For Sale—Old papers. Call at Klamath News.

### NAVAL CONFERENCE FAILURE SAYS JAPANESE DELEGATE

GENEVA, Switzerland, July 16, (AP)—The tripartite naval conference can get nowhere, said a Japanese delegate to the correspondent of the Associated Press today, until the British delegation accepts as a basis of discussion a "reasonable" figure for the total tonnage of cruisers and destroyers.

The Japanese spokesman added his delegation was at one with the Americans in this position. He explained further that details, like the sizes of ships and guns, should be discussed afterwards.

The Japanese delegation further announced it was adhering to the estimate of 315,000 tons of cruisers and destroyers combined for Japanese.

The James Nash Motors company reported 2,100 visitors. In Boston the day opened with a rush. At 3 o'clock in the afternoon, C. P. Rockwell, Inc., turned to the telephone company for "first aid" and the wire which went to Kenosha said: "We are practically cleaned out of new models. Please rush additional shipment."

A constant stream of visitors passed through the showrooms in Chicago—city dealers reporting a total of 3,700 the first day with sales of 67 cars. The day following 4,100 people visited the showrooms and on that day 55 cars were sold. The reception accorded by buyers in Los Angeles prompted The Troy Motor Sales Company to predict that the next six months will be "the biggest six months in our history."

Detroit, too, gave the new Nash series a big ovation. The Miller-Judd company, Nash distributor, describes the reception in these words: "Nash showrooms in Detroit crowded with people. Greatest reception Nash ever received. Many compliments on design and prices. Dealers all clamoring for more cars. We are entirely out of many models. Rush shipment."

Sixteen hundred and thirteen people visited the Nash Pittsburgh company's showroom while showrooms of all city dealers there were also crowded. Atlanta, Toledo, Cleveland, Cincinnati, Spokane, Wash., Milwaukee, Charlotte, N. C., and other distributors and dealers in all sections, wrote or wired a report on the enthusiastic reception accorded the new Nash models.



Have Your Broken Automobile Glass Replaced Quickly While You Wait  
BOB RYAN'S AUTO TOP SHOP  
1415 Main St.  
NOTE: See Bobby Ryan about your car awning.

## Money Saving Tire values

More long trips for the hauling company!  
If you want to get the facts about tires, take the word of people who buy tires for business purposes. The additional trips that a set of Silvertowns will give mean plus profit for trucking companies that get paid by the trip. And Silvertowns on your car give more miles at no more cost.



When you look this matter of buying tires "right in the eye"—you know that a standard brand costs least in the long run.

And a lot of times, it costs no more at the start!

We have a large range of standard values in tires—all produced by the tremendous resources of Goodrich.

Come in—name your price—and see us produce a real tire to meet it.

Radiator Hose cut to fit your car.  
Goodrich Quality

FREE REPAIR KIT with every tire Special this week only

Let us do "the dirty work" When you want air in your tires, our courteous attendants do the work while you sit in the car.

We fix Tubes Free This Week! Bring them in—no charge to actual motorists—dealers keep away.

### Cash & Carry Tire House, Inc.

516 Klamath Avenue Phone 1277 Klamath Falls, Oregon



TRY NEWS CLASS ADS—GET RESULTS

# Announcing NEW BEAUTY—NEW COLORS and Surprising Price Reductions!

—made possible by the efficiency and economies of the world's newest and finest motor car factory

Enriched in beauty by new and fashionable color combinations and offering all those amazing qualities of performance and luxury which have sent Pontiac Six popularity to record-breaking heights—

—Pontiac Six is announced today at new low prices on every body type!

This surprising price reduction comes at a time when Pontiac Six Sales have been surpassing all previous records—and is made possible only by the economies of increasing production in the new \$12,000,000 Pontiac Six Plant, which in facilities for efficient quantity production and precision manufacture, represents one of America's industrial achievements. As a result, manufacturing costs on the Pontiac Six have been reduced.

So now at a base price of only \$745 Pontiac Six offers the following features which constitute definite assurance of lasting satisfaction and which are obtainable in no other low priced six: (1)—Bodies by Fisher—with all the Fisher advantages in styling, comfort and safety. (2)—The smoothness, power and snap of the largest engine used in any six priced up to \$1,000. (3)—The endurance and stamling assured by an oiling system which forces 250 gallons of oil an hour through the engine at 35 m. p. h. (4)—The convenience and luxury of such features as tilting-beam headlights with foot control and Fisher VV windshield.

These are four great factors of satisfaction which every buyer of a low-priced six has the right to expect. Yet not one of them is provided on any other six, at or near the new low prices of the Pontiac Six. See this triumph of efficient production and advanced design which makes possible the enjoyment of six-cylinder performance and Fisher body luxury at the lowest price in history!



New Lower Prices on All Passenger Car Body Types  
Coupe - - - \$745 Sport Cabriolet \$795  
Sport Roadster \$745 Landau Sedan \$845  
De Luxe Landau Sedan \$925  
Pontiac Six De Luxe Delivery \$585 to \$720. All prices at factory. Delivered prices include minimum handling charges. Easy to pay on the General Motors Time Payment Plan.

R. R. R. Garage  
Phone 212  
820 Klamath Ave.

# The New and Finer PONTIAC SIX