

Frank Ira White Klamath Booster

With the Northern lines holding property in Klamath Falls for location of terminal facilities, it is expected that construction of the line from Bend to Klamath Falls will be started early in the spring, said Frank Ira White, former manager of the foreign trade department of the Portland chamber of commerce, while on a visit to Portland, says the Oregonian.

White has been in Klamath Falls for about a year, and contemplates placing on the market, as a residential district, his 60-acre farm, which is a short distance from the center of town, and which is near the Klamath county fair ground.

Prospects for the growth and development of the city are excellent, White said, and it is predicted that the population will double in the next two or three years. When data was compiled for the city directory the count showed the population at the end of 1926 to be 12,000.

"Situating as it is in a trade territory of its own, and without competition, Klamath Falls undoubtedly will be the second city in size in the state of Oregon," said White.

"The trade area of Klamath Falls includes some fine timber lands, agricultural lands and some of the best recreational parts of the Pacific northwest—Klamath lake and the famous Crater lake.

"Industrially the city is developing beyond all expectations. The coming of the Southern Pacific has opened the territory, and the advent of the Northern lines will augment the rail service and afford a new market for the Klamath district. At present the industries of the city in order of rank are lumbering and industries allied to wood, the railroad terminal and agriculture.

"With the tendency apparent toward remanufacture of lumber into finished products before shipment, it is apparent that for some time to come the primary industry of the region will be lumbering. The Shaw-Bertram plant is contemplating the installation of a \$110,000 dry kiln so as to be able to cure its lumber throughout the entire year. Plants manufacturing finished wood products are coming into the city now, and inquiries for locations from such plants are increasing daily.

"There is at present a housing shortage in Klamath Falls, and from present indications the building program of this year will equal, if not exceed that of last year. Klamath Falls' building program showed a greater percentage of gain during 1926 than any other city on the Pacific coast, which indicates the growth of the city itself, especially as there are not enough buildings to house the people and industries. The major projects now nearing completion are the Willard and Hampton hotels and a \$350,000 theatre building.

"Another favorable factor is the settlement of the farm lands and the bringing of them into intensive production. Most of the farms are small in size, best suited for one man to operate. Prospects for crops in the dry farming districts for the coming year are excellent, due to the fine rains. In November the rainfall amounted to eight inches, which is approximately one-half the average rainfall. A goodly store of water, in the form of snow, has been laid up in the mountains."

Prospects for the growth and development of the city are excellent, White said, and it is predicted that the population will double in the next two or three years. When data was compiled for the city directory the count showed the population at the end of 1926 to be 12,000.

"Situating as it is in a trade territory of its own, and without competition, Klamath Falls undoubtedly will be the second city in size in the state of Oregon," said White.

"The trade area of Klamath Falls includes some fine timber lands, agricultural lands and some of the best recreational parts of the Pacific northwest—Klamath lake and the famous Crater lake.

"Industrially the city is developing beyond all expectations. The coming of the Southern Pacific has opened the territory, and the advent of the Northern lines will augment the rail service and afford a new market for the Klamath district. At present the industries of the city in order of rank are lumbering and industries allied to wood, the railroad terminal and agriculture.

"With the tendency apparent toward remanufacture of lumber into finished products before shipment, it is apparent that for some time to come the primary industry of the region will be lumbering. The Shaw-Bertram plant is contemplating the installation of a \$110,000 dry kiln so as to be able to cure its lumber throughout the entire year. Plants manufacturing finished wood products are coming into the city now, and inquiries for locations from such plants are increasing daily.

"There is at present a housing shortage in Klamath Falls, and from present indications the building program of this year will equal, if not exceed that of last year. Klamath Falls' building program showed a greater percentage of gain during 1926 than any other city on the Pacific coast, which indicates the growth of the city itself, especially as there are not enough buildings to house the people and industries. The major projects now nearing completion are the Willard and Hampton hotels and a \$350,000 theatre building.

Rigid Enforcement Of Law in Klamath

"There will be no halfway measures in the enforcement of the city ordinance and state law which cover regulation of card playing in pool halls," Chief of Police Keith Ambrose told a few of the pool hall operators Tuesday night when they objected to the tightness of the lid that local police clamped down on gambling over a week ago.

Complaint of the poolroom owners was that since police started enforcing the ban on playing cards either for money or exchange trade checks, they have been losing money and now desire the city administration to allow more liberality in the conduct of their pool halls and card games.

Chief Ambrose, Mayor Tom Waters and Councilmen Van Camp and Olds heard the protests of the licensed pool hall operators. "So far as I am concerned, the city ordinance governing this point will be strictly enforced for at least six months," Mayor Waters declared. "I can't be recalled until that period of time in office has elapsed, and I stand behind Ambrose."

C. M. O'Neill, Mark Hanna and Edward Mathews were principal speakers for the pool hall men at the meeting in the city hall Tuesday night. A. W. Schaupp, city attorney, told them they are now better off than are their brethren in many other cities where even the bingles permitted here are forbidden.

Complaint of the poolroom owners was that since police started enforcing the ban on playing cards either for money or exchange trade checks, they have been losing money and now desire the city administration to allow more liberality in the conduct of their pool halls and card games.

Chief Ambrose, Mayor Tom Waters and Councilmen Van Camp and Olds heard the protests of the licensed pool hall operators. "So far as I am concerned, the city ordinance governing this point will be strictly enforced for at least six months," Mayor Waters declared. "I can't be recalled until that period of time in office has elapsed, and I stand behind Ambrose."

C. M. O'Neill, Mark Hanna and Edward Mathews were principal speakers for the pool hall men at the meeting in the city hall Tuesday night. A. W. Schaupp, city attorney, told them they are now better off than are their brethren in many other cities where even the bingles permitted here are forbidden.

ROCKNE PROMISES TEAM TO PLAY IN BAY CITY

SAN FRANCISCO, Jan. 12, (U. N.)—At a dinner given in his honor here today, Route Rockne, famous football coach, declared that the next westward trip of his Notre Dame team would be to the San Francisco section.

It was taken from this statement that Rockne referred to possible games against either the University of California at Berkeley, or Stanford University at Palo Alto.

BLAZING BARRACKS FRIGHTEN NEW YORK



Picture of army cantonment barracks on fire at Governor's Island, New York, throwing lurid glare over harbor and lower Manhattan at dusk, causing Gothamites to believe a disastrous conflagration was in progress. Four structures were destroyed; eight men were injured. Telephotograph transmitted over A. T. & T. wires to Central Press and rushed by fastest service for publication.

Tule Lake Service Men Hold Meeting

A. D. Street was installed as the new commander for the Leo L. Parrish American Legion Post No. 164, composed principally of Tule Lake ex-service men, Tuesday night at Malin, by a number of local legion members who had charge of the installation ceremonies. He succeeds Karl D. Gentry in the position, and was inaugurated into office along with other 1927 officers of the Tule Lake post.

The members of the local post who went to Malin to conduct the installation, were George Barth, commander; H. E. Getz, past commander; Ted D. Case, H. K. Smith and Lee Crawford, officers and members of the executive committee.

A large crowd of the Tule Lake membership was present for the installation, according to local legionnaires who went down for the rites, and all indications are that the Tule Lake post is forging into a year of unusual activity.

Hill Flower Shop Receives Friends

Shoppers yesterday looked a bit gayer than usual with a lovely Commonwealth rose, a corsage of violets or a regal stalk of carnations pinned on their coats or nestled against their furs.

The flowers were gifts of the Harry Hill Flower Shop which formally opened yesterday afternoon on Main street.

Hill says he is able to fill the demands of a flower loving public as his assortment is as different as it is fragrant.

Builders Favor Five-Day Week

Initial steps toward a possible five-day working week in Klamath Falls, were taken at a meeting of the Klamath Falls Builders' Exchange here last night, when that organization appointed a committee to investigate the practicability of such an institution here.

When the matter of the five-day working week that has been adopted in so many cities of the country and is now under discussion in Portland, was introduced before the Exchange last night, the members were reported to have unanimously favored the proposal that possibilities of inaugurating the plan here, be investigated.

The committee will procure data on the probable success of such a plan if adopted, and if assured of the practicability of a five-day week, will work out a tentative wage scale to suit these conditions. The wage scale would be virtually the same for five days as for the present five and a half day working week, it was stated.

The committee will report back its findings in the near future, when the organization will make a final decision on the matter.

At an election of officers to serve for the coming year, R. M. Butler was elected president, succeeding R. E. Wattenberg; W. D. Cofer was named vice-president, while Ray Pierce was elected secretary to succeed himself. Cofer succeeds J. W. Wright.

Following the business session, members of the Exchange adjourned to the Gray Goose Sandwich Shop where they were served a special supper. Virtually the full membership of some 40 local builders, attended the meeting and supper.

SPRAY RESIDUE REMOVAL IS BELIEVED SOLVED

MEDFORD, Jan. 12, (U. N.)—At a meeting of fruit growers of the Rogue River valley here Wednesday Professor Henry Hartman of Oregon Agricultural college expressed confidence that the problem of removing spray residue from pears has been solved through the dipping or washing of the fruit in a solution of hydrochloric acid.

When the matter of the five-day working week that has been adopted in so many cities of the country and is now under discussion in Portland, was introduced before the Exchange last night, the members were reported to have unanimously favored the proposal that possibilities of inaugurating the plan here, be investigated.

At an election of officers to serve for the coming year, R. M. Butler was elected president, succeeding R. E. Wattenberg; W. D. Cofer was named vice-president, while Ray Pierce was elected secretary to succeed himself. Cofer succeeds J. W. Wright.

Following the business session, members of the Exchange adjourned to the Gray Goose Sandwich Shop where they were served a special supper. Virtually the full membership of some 40 local builders, attended the meeting and supper.

For results use News Class Ads.

Forum Addressed By Railroad Man

A. Phillips, vice president of the Grand Lodge, Brotherhood of Firemen and Enginemen, was the main speaker at the forum luncheon yesterday, when he discussed the Brotherhood movement. Phillips, whose home is in Sacramento, had much to say in regard to the western rail development and the three-fold purpose of the brotherhood of which he is an official.

A. W. Schaupp presided at the luncheon.

The chamber of commerce quarter, including R. E. Patterson, Bert Holloway, Lynn Sabin and W. W. Southwell, accompanied by Mrs. George McIntyre, sang between courses.

Altamont Camp is Being Renovated

Few indications of spring are as poignant as the house cleaning of Altamont camp ground, the first steps of which were taken early this week through turning the little cabins inside out, scrubbing floors, putting up shiny yellow and white checkered curtains and doing every thing that a Dutch housewife would do in the famous Holland spring.

Mr. and Mrs. Fred Garlich, proprietors of the resort which has played the role of host to as many as 700 men, women and children during the height of the tourist season, are now domiciled at the campground ready for the spring trade which is already manifesting itself with the arrival of straggling groups of home seekers and tourists.

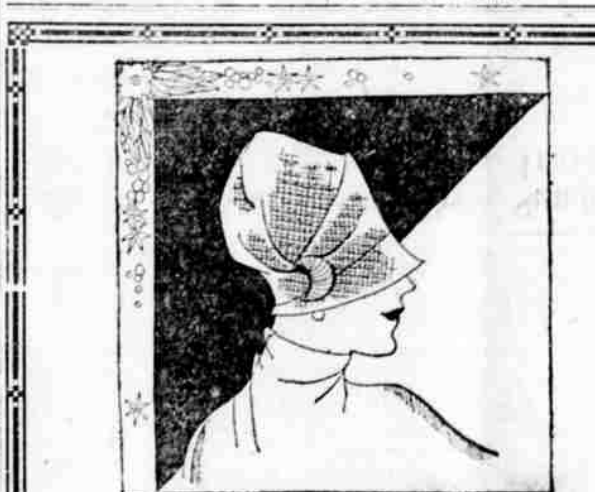
Ninety cabins, as many as many larger city campgrounds boast, are ready for occupancy or are in the making. The paths run like little highways through the cabins and are now being graveled and sanitary conditions are at their best.

The Garlichs have recently returned to a trip in the south where they took note of other campground in hope of giving "professional" tourists something bigger and better than can be found in southern Oregon.

SCHOOL BOARD WILL MEET THIS AFTERNOON

A meeting of the Klamath county school board is scheduled for one o'clock this afternoon in the office of Fred Peterson, superintendent, and a number of interesting subjects are on tap for discussion.

The subject of fuel will be concluded when the bids will be awarded for providing wood to the various school districts.



DO AS THE PARISIENNES DO!—first select your Hat and then build your complete costume around it!

A special grouping of very lovely Spring tones and all the newest Spring shapes are on display here.

FEATURES OF THE MODE: Silk and straw braid combinations are lovely in ripple brims. New Felts, featuring such shades as Monkey Skin, Mother Goose, Tiger Lily, Gooseberry, Athenia and Gentian.

MAKES: Such makes as Cameo, Westover, Catalina, and St. Francis are among our early showing.

PEGGY-CLAIRE

"HATS and THINGS" 103 So. 5th Phone 1048

Winter Garden is Place of Beauty

Invitations were received by numerous men and women in Klamath Falls yesterday bidding them attend the formal opening of the new Winter Garden, formerly Scandia hall, which has been completely transformed into a myriad of colored lights, and a fantasy of flowers and pastel decorations.

The hall has been leased by J. G. Wright, well known Klamath resident who has that rare quality of human nature, a fitness of things. Through Wright's direction, and the able assistance of Bobby Leonard as floor manager, the Winter Garden is scheduled to become the hub of winter activities for the younger set and the old.

So important has the need been felt for a place to dance that is orderly and clean, that with the announcement of new management, a large number of society are planning to attend the initial affair tonight. Dinner parties will precede the affair and little of the former rowdiness that characterized the public dance of several months ago, will prevail.

Wright and Leonard are backed by an orchestra that is partly imported, and partly local, all musicians, however, having had considerable training in the new forms of jazz as well as the modulating tones of beautiful music.

The opening tonight is expected to permit a new gateway to which Klamath residents may flock for amusement of A-1 form.

Invitations were received by numerous men and women in Klamath Falls yesterday bidding them attend the formal opening of the new Winter Garden, formerly Scandia hall, which has been completely transformed into a myriad of colored lights, and a fantasy of flowers and pastel decorations.

The hall has been leased by J. G. Wright, well known Klamath resident who has that rare quality of human nature, a fitness of things. Through Wright's direction, and the able assistance of Bobby Leonard as floor manager, the Winter Garden is scheduled to become the hub of winter activities for the younger set and the old.

So important has the need been felt for a place to dance that is orderly and clean, that with the announcement of new management, a large number of society are planning to attend the initial affair tonight. Dinner parties will precede the affair and little of the former rowdiness that characterized the public dance of several months ago, will prevail.

Wright and Leonard are backed by an orchestra that is partly imported, and partly local, all musicians, however, having had considerable training in the new forms of jazz as well as the modulating tones of beautiful music.

DR. JAYNES ACQUITTED

PORTLAND, Jan. 12, (U. N.)—Dr. S. R. Jaynes, Eugene veterinarian, was found not guilty of having violated the white slave act in a verdict returned by a jury in federal court late Wednesday.

The jurors considered the case for only a short time before reaching the acquittal.

Reliable Painters F. R. OLDS

302 Klamath Phone 192-W

Cooked Food The Ladies of the CHRISTIAN CHURCH

Will hold a Cooked Food Sale, Jan. 15, in the Tri-Cafe Bldg. Next Underwood's.

MEXICAN LABOR ISSUE CALL TO MEMBERS

MEXICO CITY, Jan. 12, (U. N.)—A call to trade unions to unite against "Yankee imperialism" in Mexico and Nicaragua and to inform the countries of the world of the underlying causes of the Mexican-United States impasse has been sounded by the federation of graphic arts.

SHOES REPAIRED

White You Wait
JACK FROST
Marshfield Logger Shoes
WORK GLOVES FOR LESS
119 So. 6th St.

Do You Envy

THOSE WHO OWN HOMES

Why envy those who
Have the courage and
Grit to deny themselves
For a short time for a
Home which gives them the
Ownership to permanent
Happiness in life's real
Joy, as you also could

BUY A LOT, THEN BUILD

Why not save the \$20,
\$30 or \$40, you would
Waste on useless odds
Next two months, which
Spent on a lot, starting
You on the safe route,
Will make home possible,
Dispose of envy, not
Uselessly be spending

Klamath Falls is the bright spot in the United States, center of a section where lies the productive land which brings profitable crops, established and growing lumber industry, where there is work for workers, values that are increased by development—opportunities in every man's life who is here.

OWN A HOME IN KLAMATH FALLS!

Phone 1—Remember It

THE
KLAMATH
DEVELOPMENT CO.
Pine Tree Theatre Building

Women's FOOTWEAR SALE



















100--PAIRS--100

Ladies Fancy Oxfords
Values to \$8.50
Now on sale at
\$5.85

These Values Will
Not Last Long,
Get Yours
Today

**HOUSTON
&
JESTER**

"QUALITY FOOTWEAR"
515 Main St.