

COUNTY COURT PROCEEDINGS

Thursday, December 30, 1926. Court met pursuant to adjournment, all members being present, when the following proceedings were had:

The following claims were allowed and the clerk was instructed to issue warrants on the following funds for their respective amounts:

Market Road Fund Tom Smith, No. 7, \$17.97

Library Fund

Chas. Scribner & Sons, supplies, \$6.75

Baldwin Hardware Co., supplies, \$2.50

Lorenz Co., supplies, \$13.63

J. K. Gill & Co., supplies, \$19.41

Underwood's Pharmacy, supplies, \$3.65

Current Expense Fund

Fern Lundquist, stenographer district attorney, \$125.00

New City Laundry, service court house, \$11.20

Frank Ward, coroner claim, \$1.20

T. S. Richardson, coroner claim, \$1.20

L. I. Low, coroner claim, \$1.20

J. I. Johnstone, coroner claim, \$1.20

Nate Otterbein, coroner claim, \$1.20

E. E. McClay, coroner claim, \$1.20

George Riddle, coroner claim, \$30.70

Adele Williams, coroner claim, \$10.70

Minnie Williams, coroner claim, \$10.70

Eta Williams, coroner claim, \$10.70

C. J. Taylor, coroner claim, \$10.70

Jeff Riddle, coroner claim, \$1.70

Dr. Wm. T. Rogers, coroner claim, \$50.00

Dr. P. M. Roland, coroner claim, \$50.00

Earl Whitlock, coroner claim, \$33.65

Whitman Drug Co., supplies jail, \$25.65

Robert Fryrear, salary and maintenance poor farm, \$901.00

Whitman Drug Co., supplies poor farm, \$39.95

Wright & Linfesty, repairs court house, \$394.43

Porter Construction Co., supplies court house, \$25.47

O. B. Cornish, salary shop supt., \$104.85

Curran Drug Co., supplies court poor, \$2.30

Templar Motor Co., supplies county poor, \$7.00

Burt E. Hawkins, transportation prisoners, \$41.55

Glass & Prudhomme Co., supplies sheriff, \$42.49

Glass & Prudhomme Co., supplies clerk, \$47.50

Glass & Prudhomme Co., supplies clerk, \$30.05

Swan Lake Moulding Co., supplies poor farm, \$41.77

C. H. Asher repairs poor farm, \$20.00

R. A. Emmitt, justice court, \$4.70

G. B. Cozad, justice court, \$1.20

R. A. Emmitt, justice court, \$5.10

R. A. Emmitt, justice court, \$5.30

R. A. Emmitt, justice court, \$3.10

R. A. Emmitt, justice court, \$7.85

G. B. Cozad, justice court, \$6.40

R. A. Emmitt, justice court, \$6.95

Jim Hilton, justice court, \$1.20

R. A. Emmitt, justice court, \$3.85

R. A. Emmitt, justice court, \$5.10

R. A. Emmitt, justice court, \$4.35

R. A. Emmitt, justice court, \$3.45

R. A. Emmitt, justice court, \$4.00

R. A. Emmitt, justice court, \$4.10

R. A. Emmitt, justice court, \$7.45

R. A. Emmitt, justice court, \$5.85

R. A. Emmitt, justice court, \$9.20

R. A. Emmitt, justice court, \$15.25

G. B. Cozad, justice court, \$29.30

R. A. Emmitt, justice court, \$7.60

J. W. Hilton, justice court, \$1.20

George Chalmers, justice court, \$1.70

John Yaden, justice court, \$1.70

Frank Ballard, justice court, \$1.70

C. T. Ross, justice court, \$1.70

R. A. Emmitt, justice court, \$2.85

G. B. Cozad, justice court, \$5.80

R. A. Emmitt, justice court, \$3.60

R. A. Emmitt, justice court, \$9.05

G. B. Cozad, justice court, \$2.20

R. A. Emmitt, justice court, \$5.45

G. B. Cozad, justice court, \$12.20

R. A. Emmitt, justice court, \$3.70

G. B. Cozad, justice court, \$7.40

R. A. Emmitt, justice court, \$5.20

G. B. Cozad, justice court, \$2.10

R. A. Emmitt, justice court, \$5.10

R. A. Emmitt, justice court, \$11.45

G. B. Cozad, justice court, \$7.00

J. F. Maguire, justice court, \$1.20

M. J. Nyhart, justice court, \$1.20

W. T. Taylor, justice court, \$2.00

G. P. Van Riper, justice court, \$1.20

Chas. Ballin, justice court, \$1.20

E. J. Owens, justice court, \$1.20

C. H. Brad, justice court, \$1.70

Joe Swindler, justice court, \$1.70

J. H. Short, justice court, \$1.70

L. O. Shirley, justice court, \$1.70

Road Fund

G. I. Stebbins, shop rent, \$60.50

W. L. Frain, labor, \$11.23

Swan Lake Moulding Co., supplies, \$1.60

Road Bond

Harrison Brown, K. F.-Lakeview highway, \$59.65

F. W. Broadward, K. F.-Lakeview highway, \$5.00

Standard Oil Co., Beaver Marsh section, \$34.07

Whereupon court adjourned to meet Friday, December 31, 1926.

R. H. BUNNELL, County Judge

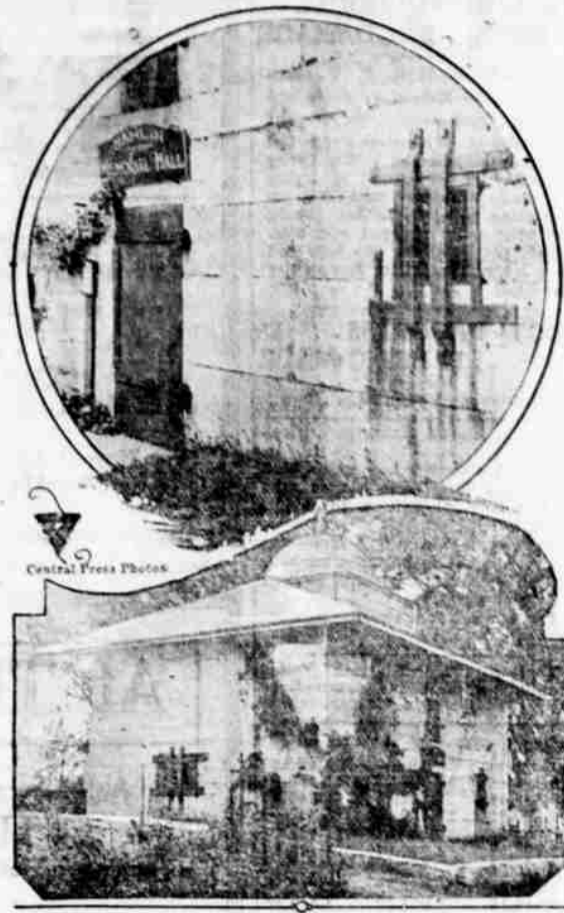
C. J. MARTIN, County Commissioner

BURRELL SHORT, County Commissioner

Friday, December 31, 1926

Court met pursuant to adjournment, all members being present,

No, Not a Jail—But a Library!



Stone walls, iron doors and heavily barred windows do not prison make, for this old county jail at Paris Hill, Maine, now is a public library.

when the following proceedings were had:

The following claims were allowed and the clerk was instructed to issue warrants on the following-named funds for their respective amounts:

Road Bond Fund

Chas. W. Thomas, K. F.-Lakeview highway, \$100.00

B. S. Grigsby, K. F.-Lakeview highway, \$222.00

Balsiger Motor Co., Beaver Marsh section, \$5.76

Union Oil Co. Bly Mt.-Beatty section, \$9.87

James T. Logan, Bly Mt.-Beatty section, \$2,315.51

Road Fund

Tom Dixon, cash advanced freight, \$14.75

Roy Dixon, labor, \$10.35

E. L. Mohler, labor, \$13.47

Harry Dixon, labor, \$26.37

Art Perkins, labor, \$31.14

Baldwin Hardware Co., supplies, \$2.30

Feenaghty Machine Co., supplies, \$11.72

Klamath Hardware Co., supplies, \$32.55

Earl Smith, labor, \$100.84

Waterhouse & Lester Co., supplies, \$23.10

Feenaghty Machine Co., supplies, \$40.60

L. B. Dawson, labor, \$9.49

Balsiger Motor Co., supplies, \$2.30

Union Oil Co., supplies, \$60.00

Union Oil Co., supplies, \$24.97

State Highway Co., supplies, \$28.50

Tom Dixon, mileage roads, \$153.50

Balsiger Motor Co., supplies, 40 cents

Balsiger Motor Co., supplies, \$148.62

Market Road Fund

Roy C. Gilson, No. 1, \$89.85

Wright & Linfesty, No. 1, 50 cts.

Union Oil Co. No. 2, \$1.68

Littrell Jennings Parts, No. 7, \$250.85

Lorenz Co., No. 7, \$2.64

Lorenz Co., No. 7, 90 cts.

Standard Oil Co., maintenance, \$14.45

Acme Motor Co., No. 8, \$2.30

Edna L. Travers, No. 1, \$5.40

Tom Dixon, No. 3, \$2.72

Union Oil Co., No. 1, \$47.01

Ryan Auto Top Shop, repairs to burned trucks, \$240.00

Balsiger Motor Co., No. 8, \$18.00

H. P. Vleury, No. 7, \$2,069.81

Union Oil Co., No. 8, \$21.41

Union Oil Co., No. 1, \$7.95

Union Oil Co., No. 2, \$5.30

R. H. Bunnell, No. 2, \$219.72

Joe Rocco, No. 1, \$965.58

L. F. Irston, No. 8, \$58.50

Current Expense Fund

Mrs. W. C. Burke, care juvenile, \$26.00

Elyses S. Valentine, salary deputy district attorney, \$150.00

Geo. Modrell, wood poor farm, \$90.00

Baldwin Hardware Co., supplies poor farm, \$24.64

A. B. Gilson, services county engineer, \$4.49

Herald Pub. Co., supplies poor farm, \$7.25

The Electric Shop, supplies poor farm, \$7.10

Fern Lundquist, services county court, \$61.00

A. L. Brandt, services district attorney, \$5.00

Drummond Print Shop, district attorney, sheriff, J. P., \$22.75

Irwin Holston Co., supplies assessor, \$20.00

Fruit grocery, supplies poor farm, \$4.65

A. Stuffer, guarding court house, \$52.00

R. H. Bunnell, mileage county judge, \$9.00

State Highway Com., supplies county engineer, \$1.41

Joe Jensen, salary county engineer, \$409.59

Western Union Tel. Co., services district attorney, \$3.47

Union Oil Co., supplies court house, \$43.12

Union Oil Co., supplies, \$60.77

A. C. Yaden, ex. district attorney office, \$1.22

A. C. Yaden, salary deputy district attorney, \$150.00

C. S. Forsion, Triangle Cafe, meals post house, \$25.20

Dona and dated this 31st day of December, A. D. 1926, at Klamath Falls, Klamath county, Oregon

COUNTY COURT OF KLAMATH COUNTY, OREGON

R. H. BUNNELL, County Judge

BURRELL SHORT, County Commissioner

C. J. MARTIN, County Commissioner

THE KLAMATH NEWS

Offers to Every Reader an

ACCIDENT INSURANCE POLICY

For \$1.25 Per Year

How to Get This Policy

Simply fill out, sign and mail or bring in the Application Form with \$1.25 in currency, money order or personal check. Applications can be personally delivered to

THE KLAMATH NEWS

or our representatives in the field.

Your Insurance is in force the minute your signed application with \$1.25 is received

USE THIS APPLICATION

APPLICATION

To JAMES BUCHANAN, Registrar: Date 1926

I hereby apply for the \$7,500.00 Accident Insurance Policy, issued by the Continental Insurance Company exclusively to regular readers of The Klamath News, for which I enclose \$1.25 (premium and registration fee.)

In consideration of receiving said policy, I hereby agree and certify as follows:

Present Subscribers Check Here I am at present a regular subscriber to The Klamath News, and will continue as such during the policy year.

New Subscribers Check Here I hereby enter by subscription to The Klamath News, service to start immediately and to continue during the policy year. I agree to pay your collector or agent the regular subscription price of 50 cents per month in advance.

(WRITE PLAINLY WITH PENCIL—INK WILL BLOT)

NAME AGE

Street Address Apt. No.

City Occupation

R. F. D. Box No. State

A married woman should give her own name, not her husband's; for instance, Mrs. Mary Smith, not Mrs. John Smith

FILL OUT AND MAIL THIS APPLICATION AT ONCE with \$1.25 in currency, money order, or personal check. PAYABLE TO THE KLAMATH NEWS, Klamath Falls, Oregon.

CLIP COUPON CLOSE TO THE BORDER

FITS Amazing New Discovery

Any sufferer from Epilepsy can now be relieved of all attacks by a new guaranteed remedy that has amazed the medical profession. No harmful or habit forming drugs. Write for free plan. Dept. 1353, PHENOLEPTOL CO., Box 71, St. Johns Pl. Sta., Brooklyn, New York.

Look to your health. Epsom Salts is still the best Physic—take it in small flavored tablets.



Mail 10c for copy of new Oh Henry! recipe book showing SIXTY new recipes. Write Williams Candy Co. Chicago