

# ARMORS HIS CAR AGAINST BANDITS

### Placer County Sheriff Has Studebaker That Will Defy Lead Hail

"Chasing the desperate bandit amid a hail of bullets will soon lose some of its hazards if peace officers generally adopt the idea of armor plate and bullet proof windshields for their cars," states Hart L. Weaver, general manager of Chester N. Weaver, San Francisco Studebaker distributor. With the progress made along the lines of protecting with steel armor plate and bullet proof glass for windshields it is going to make it a little more difficult for the bandits to evade capture from their pursuers.

"The first sheriff of Northern California to adopt these safety measures is Elmer H. Gum of Placer county, who through the Studebaker dealer at Auburn, Verne M. Ford, and our accessory department has just completed the armoring of his Studebaker against the onslaught of the desperado's bullets.

#### Well Armor Plated

"This Studebaker has been equipped with steel armor on the front doors, cowl and dash, with the windshield and side wings of bullet-proof glass, on which the bullets will fall without doing any harm. Sheriff Gum has had many exciting episodes with lawbreakers in his section, many of them dealing with automobile bandits. The two main highways traversing Placer county is a natural outlet for desperate characters in gaining the mountains or crossing the state line into Nevada. With his bullet proof Studebaker he is now going to present a fortified and speedy car that will bring grief to the bandits who try to make their escape through his county.

#### Holds High Place

"The Studebaker car holds a high place in the minds of the Western sheriffs, because of the performance it renders where the going is the

## THRILLING RIDE ENDS AT OLDS GARAGE



The passengers in the record-making Oldsmobile sent by the Klamath Valley Motor company through Crater Lake Park to Med-

ford and back by way of Ashland on learning that the park road was open to travel, were just a bit relieved at the end of their thrilling trip. Traveling at an average rate of speed of 45 miles an hour is all

right on the straight-away, but is a bit trying on hairpin curves, they said. But one gets used to anything in time, and they were all quite blasé about it on the last half of the journey.

—PHOTO BY THE PEASLEYS

most difficult and its ability to stand up under the rough usage and hard pounding it receives, particularly through the mountainous and desert sections. It was under just such conditions as these that the Studebaker cars made such an enviable record in the wilds of Arizona in the hands of the sheriffs of twelve counties in that state. In fact, this was the way the Studebaker earned its name for the Big Six five-passenger duplex model. In

Arizona twelve of the fourteen counties furnish the sheriff's office with an automobile, and upon investigation it was found that all twelve of these sheriffs were driving Studebaker cars. In looking for a name for the new Big Six five-passenger duplex Phaeton, officials of the factory, decided to name it in honor of the Arizona sheriffs. In that the car combined all the qualities of power, speed, stamina and long life under the hardest usage.

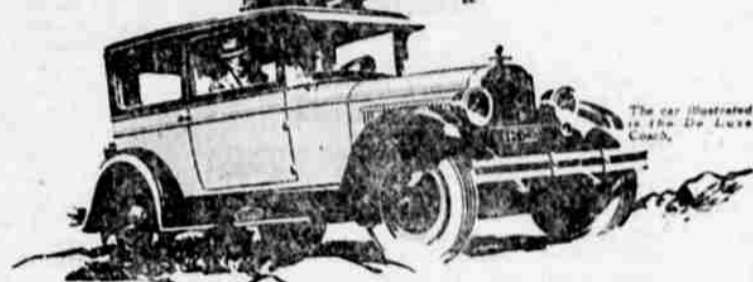
### Engineers Work on Standard Equipment

More than 100 subjects for standardization are now under study by the standards committees and sub-committees of the Society of Automotive Engineers. Among the important problems are head-lamp illumination, leather substitutes, battery sizes, bumpers and enamels.

For results see News Class Ads.

# AT THE WHEEL YOU LEARN THE TRUTH

Thousands of owners publicly confirm our repeated statement... "Oldsmobile ranks as an outstanding performance car of all time." You may, perhaps, wonder how a car so moderately priced can represent the strictest standards of design and manufacture—how it can show such exceptional qualities of acceleration, high gear power and general roadability. But in justice to yourself and your sense of satisfaction, get behind the wheel and learn the truth.



COACH \$1130 DELIVERED

Klamath Valley Motor Co. 7th and Klamath. Phone 668.

## OLDSMOBILE

# New Low Chrysler Prices

### Chrysler Supreme Six-Cylinder Quality and Performance Now Offered at Sensationally Low Prices

## New Chrysler "60" Famous Chrysler "70"

Another Chrysler Achievement

Touring	\$1075
Roadster	1145
Coupe	1165
Coach	1195
Sedan	1295

(All prices f. o. b. Detroit, subject to current Federal excise tax)

### Chrysler Quality and Value in a New Low-Priced Six

In this third great Chrysler Six, first presented only a week ago, are the same quality and value that have won such public acclaim in each of the other Chrysler Sixes.

Sixty miles, and more, per hour; unprecedented acceleration; gas economy of 22 miles per gallon; the striking beauty of Chrysler dynamic symmetry; astonishing riding ease and roadability; the safety of Chrysler four-wheel hydraulic brakes; oil-filter and air-cleaner; full pressure lubrication; seven-bearing crankshaft; road levelizers front and rear; roomy luxurious bodies.

The lower price of the "60"—the lowest price at which a Chrysler Six has ever been sold—is merely a difference of size, of speed capacity, of special performance.

You will find us eager to demonstrate to you the extraordinary Chrysler qualities which make the Chrysler "70" and the Chrysler "60" at these new low prices the most sensational values in all motor car history

# CHRYSLER

HOWIE MOTOR CO. 12th and Main. Phone 379.

Reductions of \$50 to \$200

Coach	Now, \$1395
Phaeton	Now, 1395
Roadster	Now, 1525
Royal Coupe	Now, 1695
Brougham	Now, 1745
Sedan	Now, 1545
Royal Sedan	Now, 1795
Crown Sedan	Now, 1895

(All prices f. o. b. Detroit, subject to current Federal excise tax)

### Changed in No Way—Except Lower Prices

With a production of over 800 cars per day, all of the best for which the name Chrysler stands is now offered you in the Chrysler "70" at sensationally new lower prices which make it the outstanding motor car value of all time. In the accomplishment of these new lower prices there is absolutely no change in the performance, quality, comfort, style, equipment, design, materials or workmanship in body or chassis, which have won such universal preference and admiration among more than 110,000 owners.

Among these thousands and thousands of enthusiastic owners, the Chrysler "70" has an unrivalled record for durability, long life, performance and comfort.

At the new sensationally lower prices these features of supremacy are made even more outstanding—the results of inherent fineness of Chrysler quality of design, materials and workmanship.

# STUDEBAKER Standard Six Coach

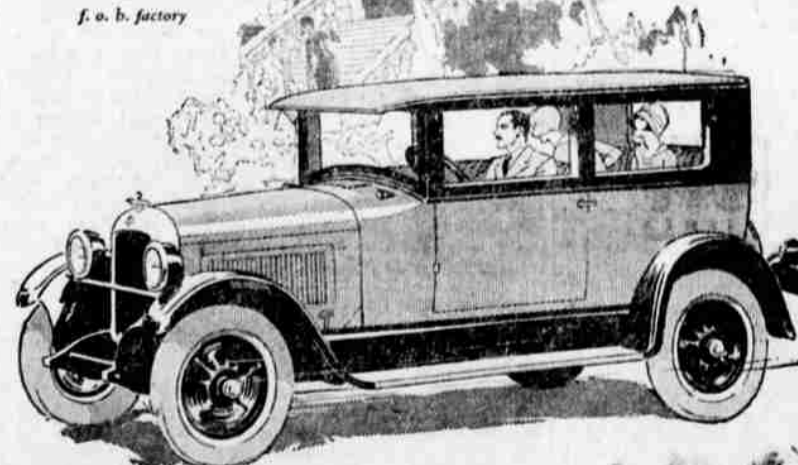
THE engine in this Standard Six Coach is the most powerful in any car of its size and weight, according to the rating of the Society of Automotive Engineers.

And whether you buy this quality Studebaker Coach at \$1195, or the Big Six Studebaker Sedan at \$2145, you buy with the assurance that in quality there is but one Studebaker.

Thus to surpassing power, Studebaker adds superb quality—a combination you'll look far to equal, even in the highest priced cars.

Accept our invitation to drive the Standard Six Coach anywhere—any time.

\$1195 f. o. b. factory



DUNHAM AUTO CO.

Phone 52-W.

403 So. 6th St.