

NEW CHRYSLER'S FEATURES MEET HIGHEST PRAISE

J. E. Howie of the Howie Motor company, Chrysler dealer, drove down from Portland Friday with a new Chrysler "Sixty," the first of this new model to be brought into the city.

Built with a six-cylinder motor in the "Fifty-Eight" chassis, the new model was designed by Mr. Chrysler to set the pace in competition with the growing field of light six cars, according to Mr. Howie. It is, however, not a mere adaptation, as the "Fifty-Eight" chassis is built with far greater strength than its four-cylinder motor required. Of a hundred and nine surprising easy riding qualities, easy handling qualities on turns, fine pick-up and hill-climbing ability.

Perhaps the most noteworthy characteristic of Chrysler cars, according to Mr. Howie, is the great care taken in the design, selection of materials, and particularly the minute precision used in the machine work of the car. Surfaces are frequently machined to a five-thousandths of an inch, he stated, while every refinement in motor and body construction has been provided by what is the oldest group of automobile engineers in America.

Improve Driving By Watching Chauffeur

Sometimes it doesn't pay to get ahead of the other fellow. Nowhere is this better illustrated than in passing a chauffeur-driven car. A good chauffeur is a good man to follow. He drops dozens of tips in the course of a short run down the avenue, but these are lost when one is running ahead of him. It is good practice sometimes to get behind a good driver and watch him. It is worth trying. One's mistakes in driving thus become mistakes in

Reclaimed Rubber Tires Give Service

Use of reclaimed rubber in the treads of pneumatic tires has been investigated by the United States bureau of standards with the result showing that tire tread in which 25 per cent of the normal rubber content has been replaced by reclaimed rubber gave an average service of about 7,000 miles on the road.

Pennsylvania Leads In Taxation Tolls

Pennsylvania led all states last year in the amount paid in fees, drivers' licenses and gasoline taxes, with \$30,279,770. New York was second with \$25,506,245, followed by California, \$22,773,087; Michigan, \$22,762,050, and Ohio, \$22,157,181.

PUZZLE SOLVED

According to Firestone automotive statisticians, the number of families owning more than one car is on the increase. This explains the puzzle of "one car for every eight individuals."

Gardner Wins in Obstacle Race at Seattle Contest

More man may still claim superiority in some fields of sport and business, but every day sees one or more of his long standing claims shot to pieces. The latest is in the matter of motor car driving, and the woman who has upset a lot of old ideas on this subject is Mrs. A. Eddy, of 5203 Sixth avenue, North-east Seattle.

The occasion was the obstacle race recently held by Seattle auto dealers in that city, in which 15 feminine drivers competed. Competition was divided into three classes—for cars under 110-inch wheelbase; for cars from 110 to 125-inch wheelbase; and for cars over 125-inch wheelbase.

The race was held over the four-block course on Eleventh street between Pine street and Denny Way, which was strewn with boxes and barrels placed so as to form a series of sharp S curves. Each contestant was forced to get away from a standing start, then go through a letter S, then a straight stretch, then a letter S in the opposite direction from the first one, then another straight stretch, a turn and back over the same course. An idea of the skill with which Mrs. Eddy drove her Gardner eight-in-line may be had from the fact that she not only walked home an easy winner in her class, but covered the course in faster time than the winners in those classes open only to cars of short wheelbase.

The time of the winner and the runner-up in each class follows: 125-inch wheelbase cars: First, Mrs. A. Eddy, driving a Gardner eight-in-line sedan. Time 1 minute, 26

2,000 Motor Buses Operate in Canada

More than 2,000 motor buses are in service in Canada. The province of Manitoba has taken advantage of the motor bus to provide adequate transportation for its school children, and out of a total registration of 400 buses, 550 are employed for this purpose.

UNCLE SAM BUYS TRUCKS

The postal department, Washington, D. C., after seven years' experience with motor trucks, has decided that it has immeasurable advantages over the horse-drawn vehicle. The department's records show that in one city alone \$30,000 was saved by the motorization of a portion of the letter box collections and parcel post delivery services.

seconds. Second, Miss H. Schuett, driving a Pierce-Arrow. Time 1 minute, 52 seconds. 110 to 125-inch wheelbase cars: First, Mrs. F. E. Griff, driving an Oldsmobile. Time 1 minute, 36 seconds. Second, Mrs. T. H. Patterson, driving a Jewett. Time 1 minute, 37 seconds. Cars under 110-inch wheelbase: First Miss T. W. McDonald, driving a Chevrolet. Time: 1 minute, 29 seconds. Second, Mrs. A. Gamblen, driving a Chrysler four. Time 1 minute, 53 seconds.

All of the races were against time and the contestants were clocked by L. D. Martin, manager of the truck division of Puget Motors, Pierce-Arrow factory branch at Seattle.

The most popular American cars in England are the enclosed type, selling from \$750 to \$1,600.

If you know of any game violations, call phone 584. All information will be strictly confidential.

Overland Coupe Is Expected Here Soon

A new Overland Six model, the coupe, is expected in Klamath Falls within a few days, according to J. P. Brett of the Overland-Knight company. The new coupe is said to be a very attractive "job." Besides the new coupe, the shipment expected will include two Willys-Knight "Seventy" models and an Overland Four touring. Mr. Brett said. Demand for the "Seventy" continues to be far in excess of the supply, as but two of the cars have arrived, to be snapped up at once, while several are on the waiting list for this popular model.

COAST TO COAST

It is now possible to buy a through ticket and travel all the way from New York to San Francisco on a balloon-tired motor bus or motor coach, or to travel from El Paso, Texas, to Portland, Ore. More than 70,000 of these motor buses and coaches are now traversing American highways.

The average expense incurred during 1925 by 6500 Chevrolet dealers throughout the country on repairs and adjustments during the ninety-day guarantee period was less than \$2 per car. A remarkable showing, considering the minor troubles that are apt to develop when a new car is first taken out on the road.

Struthers Shock Absorbers (Snubbers)

Designed and perfected with the development of the balloon tire to meet every requirement and keep every movement of body and springs under proper control.

Before installing any shock absorbers, see the Struthers—study the principle.

There are others, but none like Struthers.

SULLIVAN & HOWARD

Sales and Service.
510 South 6th St.

Get Your SEIBERLINGS TODAY



Don't wait until your old tires are completely gone before you buy your SEIBERLINGS. Many a day that started perfectly has suffered an unpleasant end just because a tire was not what it should have been.

Spare yourself the grief of constant tire trouble. Get a set of SEIBERLING CORDS. They may cost you a trifle more than some tires, but freedom from tire worry is worth far more than the slight additional cost.

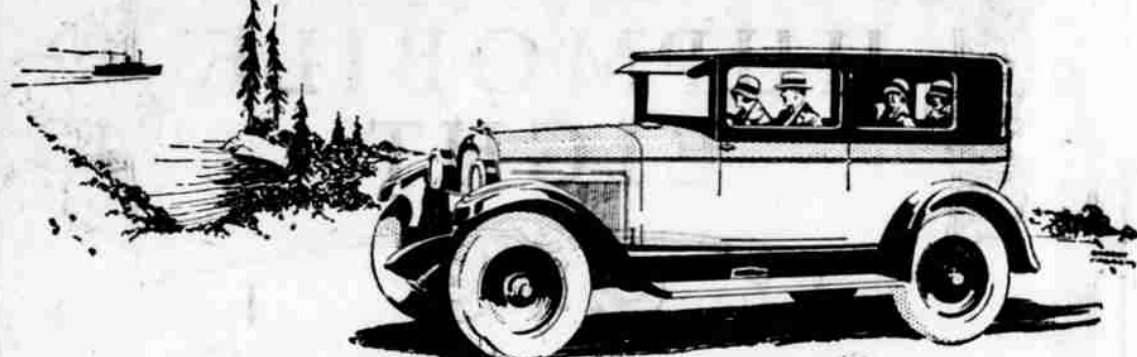
Every SEIBERLING owner is a SEIBERLING booster. Just ask any of them for their honest opinion as to the biggest tire value. We'll bet they'll say "Why, SEIBERLINGS, of course."

Get your set today.

Seiberling Tires and Tubes

30x3 1/2, 4 ply	\$15.95	PORTAGE CORDS	
30x3 1/2, 6-ply	\$21.95	30x3	\$11.25
29x4.40	\$19.95	30x3 1/2	\$11.95
32x4 1/2	\$47.95		
30x5	\$61.95	OTHERS	
33x5	\$65.95	30x3	\$7.75
32x6, Standard	\$75.75	30x3 1/2	\$8.50
32x6, O. S.	\$100.95	30x3 1/2 Cord	\$10.00

The great Power favorite



LIVE, obedient energy from the low swung, gravity balanced motor, makes the Overland Six the great power favorite of the West. It will out-run, out-pull, out-accelerate any other car near its price or size class.

The full motor power is usable, all the time, carried in a straight line from the crank shaft to the rear axle. You feel its real power superiority whenever you make a demand on the engine for more speed, or a quick get-away, or for the last ounce of pull on a steep mountain grade.

Until you have tried this great power plant in competition with others of the same size, you cannot have an idea of how much better it really is.

The low swung, gravity balanced body gives great stability on the road—you can use the power on curves and where the going is rough. At the end of the day's run, this Overland Six will pile up a mileage that will surprise you.

Long springs, the longest wheel base on any car in its class, even distribution of weight, all add to the amazing performance value of this leader among light sixes.

In appearance it is outstanding in its class—a real aristocrat in every line and detail. Drive it—ride in it—learn why it is the great popular favorite. Try it out for yourself.

\$935

F. O. B. FACTORY

The New Willys Finance Plan

Smaller down payments and smaller monthly payments; the lowest credit cost in the industry.

Overland Six

Overland-Knight Sales Co.

Phone 899

4th and Klamath

Balsiger Motor Co.

Authorized Ford Sales and Service

9th and Klamath Ave.

Phone 427