

# LICENSE PLATES INCLUDE MANY COLOR SCHEMES

The color scheme of the license plates used on automobiles in the various states runs the gamut of all the colors of the rainbow. Following is a list of the various states and possessions with the license plate color combinations. The color of the numerals is given first in every case, while the color of the background is given second.

Alabama, white on green; Arizona, black on white; Arkansas, black on white; California, white on blue; Colorado, white on grass green; Connecticut, black on chrome orange; Delaware, bright yellow on blue; District of Columbia, black on chrome yellow; Florida, orange on black; Georgia, white on crimson; Idaho, black on orange; Illinois, white on blue; Indiana, white on bright green; Iowa, white on maroon; Kansas, white on blue; Kentucky, white on maroon; Louisiana (cars under 22 h.p.) maroon on white; (23 h.p. and over) white on blue; Maine, yellow orange on dark blue; Maryland, white on black; Massachusetts, white on medium blue; Minnesota, white on black; Mississippi, white on green; Missouri, black on lemon yellow; Michigan, white on black; Montana, black on white; Nebraska, white on green; Nevada, canary on black; New Hampshire, white on green; New Jersey, white on orange; New Mexico, vermilion on gray; North Dakota, red on gray; New York, white on dark blue; North Carolina, black on orange; Ohio, white on chocolate brown; Oklahoma, black on lemon yellow; Oregon, white on black; Pennsylvania, blue on gold; Rhode Island, white on black; South Carolina, red on white; South Dakota, black on aluminum; Tennessee, white on black; Texas, black on battleship gray; Utah, black on aluminum; Vermont, green on gold; Virginia, orange on blue; Washington, white on green; West Virginia, ivory on blue; Wisconsin, black on cream; Wyoming, white on emerald green; Alaska, black on green; Hawaii (Honolulu) white on green; Porto Rico, black on bronze; Philippine Islands, black on white.

**TIME TO REBORN**  
When the crank case begins to emit smoke on hills through the breather tube or the oil filler pipe, it is a sign that the engine gases are leaking past the rings into the crank case. Motorists are sometimes told that this is due to running on too thin oil, and are misled accordingly.

For Results Use News Class Ads

# Woman Traverses Darkest Africa in Auto



Louise Delingette, adventurous Frenchwoman, is returning to Paris after having traversed the length of Africa in a motor car. Most of the 23,000-mile journey from the Mediterranean to the cape of Good Hope was through roadless country infested with wild animals and savages. Mme. Delingette (inset) is seen in camp in the heart of Rhodesia. She is at right, sewing.

# BUGGY RIDE TO DISPLACE AUTO

Willamette Girls Forbidden to Joy Ride, Drop Back to Horse and Buggy

WILLAMETTE UNIVERSITY, Salem, April 16.—(United News)—“Thanks for the buggy ride,” will be more than the name of a popular song here. It will have a definite meaning, as tonight students were preparing to revert to the pastime of their grandmothers and go buggy riding, as a result of a recent order forbidding the fair coeds from taking pleasure trips in automobiles in company with men.

# PATHS FOR PEDESTRIANS

In Chicago, the chief of police intends to ask aldermen to pass a law compelling pedestrians to obey red and green traffic lights in loop, in the same manner that motorists are forced to obey the lights.

Use signals that everyone can understand.

# Receive 2 Carloads of Oldsmobiles

Natural wood wheels feature several of the new arrivals in the two carloads of Oldsmobiles which came yesterday, consigned to Klamath Valley Motor company, local dealers. The shipment included coupes, coaches and sedans.

Of the eight automobiles in these two cars, a number have already been reserved for purchasers, and the others are expected to be snapped up in a short time. The 1926 models in Oldsmobile line are proving more popular, than even the best of former offerings, according to L. F. Kirkpatrick of the local distributors.

# SHASTA VIEW

The Charles Kinkle family, who have been residing on the Cotton place in Libbey district, have moved to the Ben Pickett place. A. H. Hale has moved all his dairy equipment to his ranch from Klamath Falls. John Caeka is building an addition to his dairy barn. Robert Coffman and family, who have been visiting with Oliver Martins have returned to Butte Falls. Charles Faught and family transacted business in Klamath Falls Friday. Mrs. A. M. Thomas and her mother, Mrs. Weir, left for San Francisco last Monday. They intend to be gone for a month. The Helping Hand old-time dance which was given Friday night by the club members, was greatly enjoyed and a great success. Shasta View boys played baseball with the Libbey boys Friday.

the score being 7 to 31 in favor of Shasta View.

Miss Briacoe spent the week-end with her parents in Fort Klamath.

# OVERLAND SHOWS SALES INCREASE

Reports from all sections of the Pacific coast and Inter-mountain states show that the Overland six, which last year jumped into second place in sales among all light sixes, is this year making such strides forward in public favor that in many sections it is now the leading car of its general class in sales volume.

Competitive tests, hill climbing demonstrations, road speed and general stability in this car have been of such a nature that it is being accepted as the outstanding achievement in light six construction.

While it ranks well down in the price scale of the light sixes, it offers a longer wheel base, larger body and roomier seats for the passengers than any other car in its size range.

Production plans at the factory in Toledo, Ohio, contemplate a very large increase over the figures set for last year, when better than 60,000 were produced and sold at retail, with more than 10,000 unfilled

orders on the books of the factory organization at the end of the year. Announcement is also made of production on a large scale on the new Willis-Knight Six Seventy, the new product of this large manufacturing organization which was introduced early this year.

The initial demand for this car has exceeded anything before known in the history of the factory. Owing to the weather conditions in the Pacific coast territory, preferential shipments are being made, and it is expected that dealers will be furnished with these cars in sufficient numbers during the next few weeks to take care of the huge volume of sales which have been steadily piling up.

This is the car with the motor which develops greater horse-power per cubic inch of piston displacement throughout its entire performance range than any other American built power plant, and which is equalled by but one other motor in the world, that being a Knight type motor built by the Daimler Motor company of Coventry, England.

There are 6,000 women possessing permits to drive automobiles in Paris, whereas some three years ago there were only 600 feminine motorists.

# Motor Stage Bill Sets License Fee

SALEM, April 17.—(United News)—The Oregon Motor Stage association today filed an initiative bill in lieu of the present bus and stage bill which was referred by the stage men.

Fees prescribed in the new bill range from \$517 on the 30-passenger bus to \$120 on the six-passenger bus, and from \$103 on six-ton trucks to \$109 on one-ton trucks.

It is provided that passenger carrying vehicles with a capacity of five passengers or fewer, and all smaller freight carrying trucks under supervision of the public service commission shall pay a fee of \$10 per year.

**THIRTEEN MUST BE LUCKY**  
E. A. McGoldrick, prominent lumber manufacturer of Spokane, Wash., carries on his auto license No. 13,000, and has done so for six years. He declares that since he began using this number he has not been arrested nor had an accident.

Buy your coat this week at Bee Begin's Store and save 10%. A15-18

KLAMATH VALLEY HOSPITAL Beds will be reserved without charge for the expected confinement.

# Your next Tire should be One of these Three!

**FIRST**, because quantity production, done according to very strict specifications that put quality first, will give you a better tire.  
**SECOND**, because the "Western Auto" way of selling, direct through its own stores to you, gives you a better tire for less money.  
**THIRD**, because a "Western Auto" Store is almost always within driving distance—ready and willing to render competent service.

## TIRES MOUNTED FREE



Wear-Well Cords		Western Giant Cords		Western Giant Balloons	
Standard weight and standard oversize in a Cord Tire that equals many standard cords on the market and costs from \$5 to \$12 per tire less, according to size.		HEAVY DUTY—COMMERCIAL TYPE Extra oversize, extra weight, extra mileage. In a Cord built for heavy commercial use, or extra hard passenger car service, at a low price.		A low-pressure tire with high-pressure wearing qualities. Comfortable, rugged, long wearing, economical. Heavy, flat tread means long life, and EVEN wear.	
Size	Price	Size	Price	Size	Price
30x3	\$8.95	36x6	\$88.75	29x4.40	\$16.85
30x3 1/2	\$9.75	33x5	\$47.90	Giant Balloon	\$23.65
Clincher, Reg. Size	\$10.95	33x5	\$45.65	29x4.95	\$24.20
30x3 1/2	\$13.80	Str. Side	\$34.90	Giant Balloon	\$24.75
CL. (Oversize)	\$16.95	33x4 1/2	\$33.85	31x4.95	\$26.80
30x3 1/2	\$17.85	Str. Side	\$32.75	Giant Balloon	\$27.60
SS (Oversize)	\$18.65	33x4	\$25.85	30x5.25	\$31.40
31x4	\$19.45	Str. Side	\$24.65	Giant Balloon	\$36.50
SS (Oversize)	\$25.75	32x4	\$23.45	30x5.77	\$36.75
32x4 1/2	\$26.85	Str. Side	\$16.75	Giant Balloon	\$41.80
SS (Oversize)	\$27.90	31x4	\$14.85	32x6.20	
		Str. Side	\$12.85	Giant Balloon	
		30x3 1/2 Extra		33x6.75	
		Oversize Clincher		Giant Balloon	
		30x3 1/2			
		Reg. Size Clincher			

Extra Special This Week Only  
**30x3 1/2**  
Western Standard Fabric  
**\$7.75**

A good quality fabric tire that will give satisfactory service—(guaranteed 6000 miles). Our price only. **\$7.75**

**THIS WEEK'S SPECIALS**

**Everlastic Patch**  
Outfit includes 30 square inches rubber patch, special metal buffer, and tube of rubber cement—Regular price 35c—This week only **24c**

Large size (72 sq. inches of patch). This week only **41c**

**Tire Cut Filler**  
A small amount of this heavy rubber putty applied to tire cuts will often prevent blow-outs. Handy tube reduced this week only **27c**

Accessories for All Cars

**29x4.40**  
**Wear-Well Balloon**

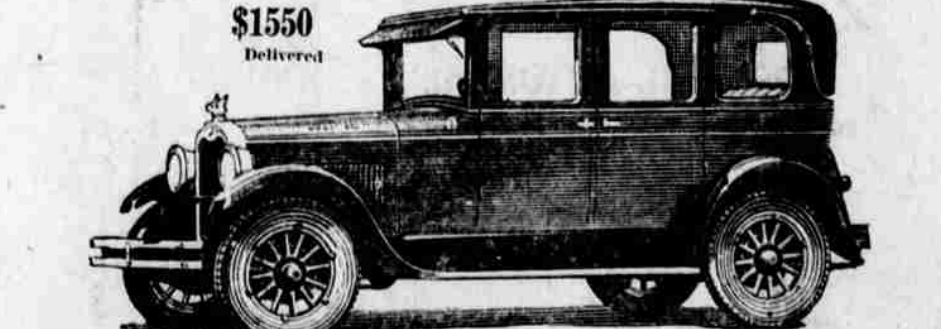
Standard quality—standard weight—standard oversize. Good value and satisfactory service are built into this **\$13.95** tire. Our price only.

**Gray Tube**  
Size to fit above balloon tire **\$3.40**

# What is the secret of this Country-Wide Good Will?

You hear people everywhere praise this new Oakland Six in almost extravagant terms. You hear them speak of it as the outstanding motor car in its field. What is the secret of this favor? What is the reason for a demand that has placed Oakland in the very forefront of the industry? Simply the fact that this beautiful new Oakland Six, with Body by Fisher, offers a combination of speed, power, stamina and smoothness unsurpassed, even by higher priced cars. Simply the fact that it embodies advanced engineering features not combined in any other car, including Air-Cleaner, Oil Filter, Full-Pressure Oiling, Four-Wheel Brakes and Harmonic Balancer. Simply the fact that, at its amazingly low prices, it stands absolutely alone in quality and value.

Oakland Six, \$1025 to \$1295. Pontiac Six, Companion to Oakland Six, \$825. Coach or Coupe. All prices at factory. General Motors Time Payment Rates, heretofore the lowest, have been made still lower.



**\$1550**  
Delivered

**R. R. R. GARAGE**  
831 Klamath

WINNING AND HOLDING GOOD WILL  
**OAKLAND SIX**  
PRODUCT OF GENERAL MOTORS

Make "Western Auto" Your Headquarters For Auto Supplies, Accessories, Tires, Camping Equipment

More than 125 Stores in the West—**Western Auto Supply Co.**  
7th at Pine.

Ask for 1926 Catalog It's Free!  
Stores Open Saturday Night Until 9