

WOMEN TO STRIKE AGAINST STRIKES

LONDON, April 16. — (United News)—In 20,000 British homes Saturday there will be no evening meals awaiting husbands when they return from their day's labor. The beds will be unmade and little evidences of the housewife's touches will be entirely lacking.

The condition of these British homes will be part of a strike against strikes by 20,000 British wives.

This demonstration will be participated in by London women and others from various suburban districts, all determined that the episode of strikes and threatened strikes in England shall end. The protest of these thousands of women, coming as it does when a strike of millions is threatened by the failure of the coal miners and operators to reach an agreement, is attracting attention throughout England.

Scotland Yard has made preparations for extraordinary police protection for the parade and meeting of the women strikers Saturday, due to hints that the unemployed thousands of London will try to break up the demonstration. Labor leaders have opposed the project since it was announced. They claim that the demonstration is a capitalistic effort to hurt the labor cause in England.

"We are going to show the men that women and children are the greatest sufferers from the coal strike, the railway strike, the cab drivers' strike or any of the dozens of other walkouts which have come in the past or are threatened for the future," announces Miss M. E. Waddell, secretary of the guild which will handle Saturday's demonstration.

LONE PINE

Phelps Lewis called at the school house Monday.

Mrs. Henry Seman, Gretchen and Charlie Seman visited with Mrs. E. E. Enman Sunday.

Mrs. Basil Hall, who is visiting relatives near Bly, is on the sick list.

Mrs. J. Tollman and Bessie Tollman are expected home from Klamath Falls this week.

Jackie Taylor visited with his aunt, Mrs. Johns, Saturday.

Mrs. Myron Taylor and Mrs. R. F. Beasley visited Mrs. M. P. Gallard Tuesday.

Fred Sleman, who has been in California visiting his sister, returned to this neighborhood last week.

COST OF ROAD CONSTRUCTION

The average cost of the several types of hard-surfaced road construction in the United States is about \$33,200 a mile, and of gravel roads about \$10,000 a mile.

CHURCHES

THE ALL-IMPORTANT QUESTION

Text, Matt. 27:22. "Pilate saith unto them, what shall I do, then, with Jesus which is called Christ? They all say unto him, Let him be crucified."

This is the question of Pilate, the Roman governor of Judea, at the occasion of the so-called trial of Jesus Christ the Son of God. Pilate without knowing it, was face to face with a crisis in the history of the world. He was facing a situation which would go down to the end of the ages, the decision of which would be either to his credit or dishonor. Jesus Christ is on trial. The evidence is all in, the prosecutors demanded crucifixion, as the manner of his destruction, for they are resolved upon his destruction. The words of this text, are the word of Christ's judge.

The plea of the prisoner is absolute silence, fulfilling the prophecy of Isa. 53:7. "He was oppressed and he was afflicted, yet he opened not his mouth. He is brought as a lamb to the slaughter, and as a sheep before her shearers is dumb, so he openeth not his mouth." The declaration of his judge, is, with all the evidence in "I find no fault in this man." "I find no cause of death in him." He offers a compromise. They choose Barabbas.

In this dilemma, Pilate asks "What shall I do, then, with Jesus?" We notice first: Some truths brought out in this trial, of world-wide, and age-lasting importance. Jesus' life and character and words and works demonstrated that he was superman, "Son of Man" "Son of God." Men on trial, whether innocent or guilty show more or less anxiety at the outcome, but Jesus Christ, with calmness, and without emotion, heard himself maligned, misrepresented and falsely accused. He had said "I lay down my life, for my sheep." He was not guilty of treason, of which he was accused of any kind. Not against the emperor, for he had specifically stated "Render unto Caesar the things that are Caesar's, and unto God the things that are God's."

He was not a trespasser against the law of Moses, for he said "Till heaven and earth pass away, not one jot, or one tittle shall pass from the law till all be fulfilled." "I came not to destroy the law or the prophets, but to fulfill." He was guilty of no crime, unless the gospel of eternal life be a crime—unless granting the forgiveness of sins be a crime—unless the fact that God the second person of the trinity, having taken upon himself a man's fleshly body in order to take upon himself the sins of man, be a crime. He was guilty of no crime, unless his assertion, that he would conquer death, rise from the dead and come

to earth again to receive his own, be a crime. He demonstrated the love and the power and the glory of God, and gave gifts unto men and for this, wicked men said, "Let him be crucified." We are therefore brought face to face with the fact that unbelief was the cause of Christ's condemnation—unbelief creates doubt, rejects evidence, refuses to listen to reason, denies proof, and generates hatred. Unbelief, indulged, produces disbelief. This was without doubt the condition of these Jews, for Jesus had said unto them, "Ye will not come unto me that ye might have life." He thus puts the matter squarely up to their own will. This very fact is still before us. Our will seems deadened by unbelief, until we fear and fail, and refuse to do what our mind and heart, says is right. Unbelief is the only sin which will be checked up against man at the judgment, for Christ died to sin, he canceled all other sin, and by many infallible proofs, proved himself the Son of God. If the Son of God, then the Saviour of men. "He that believeth on the Son hath everlasting life; and he that believeth not the Son shall not see life, but the wrath of God abideth on him." Again, "For God sent not his Son into the world to condemn the world, but that the world through him might be saved. He that believeth on the Son is not condemned; but he that believeth not, is condemned already, because he hath not believed in the name of the only begotten Son of God." Unbelief is jealous of truth, and denies its statements—unbelief takes refuge in excuses, inconsistencies, and sometimes stubbornness and untruth, and sometimes denies its own refutation.

These Jews were unbelievers, in spite of the prophecies of God, and the miracles of Jesus Christ, which were the proofs of his divine Sonship, and without reason or excuse, and receiving no benefit from it, they say "Let him be crucified." Pilate had this stubborn unbelief with its testimony all in, before him and said "I find no fault in this man." The Jews say "Let him be crucified." "What shall I do then crucified?" "Shall I crucify your king?" This was Pilate's dilemma. He had the Son of God as we term it, on his hands. The decision is his: What shall I do with Jesus Christ?

By inspiration this question is brought down to us. It cannot be shifted. We are required to answer "He by the grace of God tasted death for every man." "He that believeth on him, hath everlasting life." What shall I do with Jesus Christ, in our most absorbing question. The benefits of receiving him are all mine. He died for me. That I might be forgiven, born again, a

Southwell Stationery Co.
EVERYTHING FOR THE OFFICE



WE INSTALL BOOKKEEPING SYSTEMS
826 1/2 Main St. Phone 602

Pacific Coast Radio Programs

April 18.
KFO, 428.5 meters, San Francisco—9:45 a. m., undenominational service, Rev. William J. Owen, Ashbury M. E. church; 10:45 a. m., program; 3 p. m., organ, Marshall W. Giselman; 6 p. m., States Restaurant orchestra; 8:33 p. m., Palace hotel orchestra; 8:43 p. m., Fairmont Hotel orchestra.

KGO, 361 meters, Oakland—11 a. m., First M. E. church, Oakland; 3:30 p. m., Grace Cathedral vespers; 7:30 p. m., First M. E. church, Oakland.

KFI, 467 meters, Los Angeles—10 a. m., Los Angeles Church Federation; 11 a. m., Temple Baptist church; 4 p. m., vespers; 6:45 p. m., music appreciation chat; 7 p. m., programs; 8 p. m., organ, Dan L. MacFarland; 9 p. m., 10 p. m., music.

KHJ, 205 meters, Los Angeles—10 a. m., Rev. C. A. Watson, district

superintendent, Free Methodist church; 10:30 a. m., First M. E. church; 4 p. m., Masonic service; 8 p. m., 9 p. m., music programs

KNX, 337 meters, Hollywood—10 a. m., First Presbyterian church, Hollywood; 12:45 p. m., 2 p. m., programs; 4:30 p. m., cinema chat; 6:30 p. m., Unitarian church, Hollywood; 7 p. m., program; 8 p. m., First Presbyterian church, Hollywood; 9 p. m., program.

KGW, 491.5 meters, Portland—Usual Sunday features.

Fresh Radio Batteries, Tubes, and Aerial Materials. Free Radio Programs and Log Sheets.

Earl Shepherd, 507 Main.

child of God, to have everlasting happiness, joy and unspeakable bliss in the mansions of the eternal one. Shall we not say, I will now take Jesus Christ as my earthly hope, as my assurance in death, as my Advocate in the courts of heaven. Let us not say, Let him be crucified.

A. F. SIMMONS, Pastor First Baptist Church.

CROSSES FOR DEATH SPOTS

More than 300 white crosses will be painted or wooden crosses put up on streets and roads in and near Indianapolis, Ind. They will mark the places where persons have been killed in accidents in the last four years.

Another shipment of new summer hats has just been unpacked at Bee Begin's Store. A15-18

ATWATER KENT RADIO



DANCE on a smooth floor with plenty of room—with the people you pick out for the occasion. And dance to the music of the orchestras that are crowding the most popular dancing places in the country.

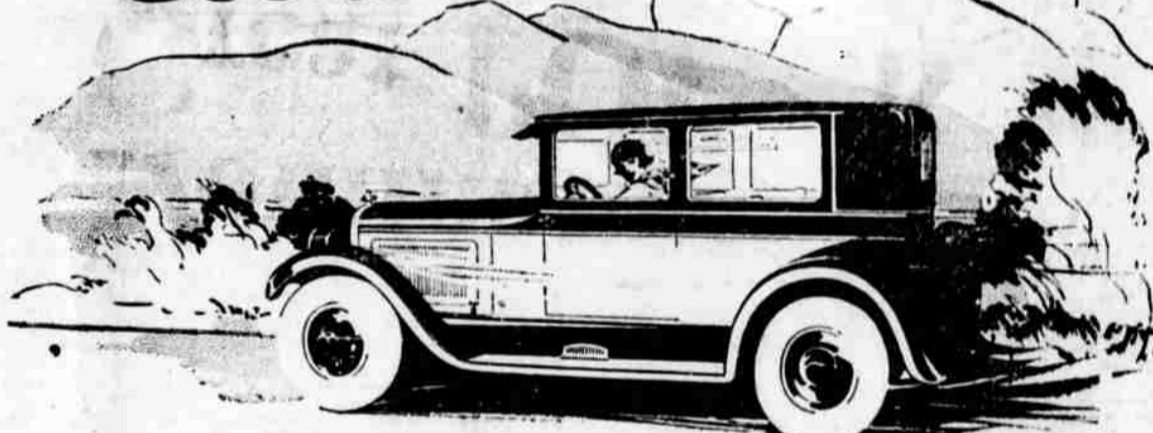
BALDWIN HARDWARE CO.
"The Winchester Store."

SUNDAY CHICKEN DINNER

Man—Man! Some Feed.
—It's the Cook—
WHITE CAFE
BOB PULASKI GEO. W. EVENS
Open 6 a. m. to 1 a. m.
1118 Main St.—Phone 346-J

TRY NEWS CLASS ADS—GET RESULTS

Dominant Great Power



MILE in and mile out—on the longest tours—over rocky mountain roads—up steep winding grades—or swinging along the highway—this Overland Six dominates by its great energy.

The low swung, gravity balanced motor, sending its full power in a straight line to the rear axle, conquers every driving demand—it will out-run, out-pull, out-accelerate any other power plant in anywhere near its price or size class.

The gravity-balanced chassis and body, with the weight kept low to the ground, gives a road stability that affords an unusual feeling of comfort and safety on curves and where the going is rough.

Back in town, the quick pickup, as you open the throttle to get out of the traffic jam, keeps you well ahead of the other cars on the street.

In appearance, the graceful lines, rich color tones, luxurious upholstery and quality finish make this car look fully \$500 better than its price.

Try it out. ~ Learn what gravity balance and real usable power can bring to light six performance.

\$935

F. O. B. FACTORY

The New **Willys Finance Plan**

Smaller down payments and smaller monthly payments; ~ the lowest credit cost in the industry

Overland Six

Overland-Knight Sales Co.

Phone 899

4th and Klamath

TIRES

- 30x3 1/2 Cords \$10.45
- 31x4 Cords 19.50
- 32x4 Cords 20.35
- 29x440 Balloons 14.95

Pre-O-Lite BATTERIES

\$10.95

We will call for your car, wash it, polish it, and thoroughly vacuum the upholstery. It will then be returned to your garage. You'll appreciate this service.

Commercial Rates on Storage.

IMPERIAL GARAGE

The Garage That Never Closes
3rd and Main Sts.
Phone 180.



TWO THINGS TO REMEMBER

By James W. Harrell

1. Remember not to let a woman turn your head.
2. Remember not to turn your head away from this ad until you grasp its saving significance.

STAR CARS

Fours and Sixes

Are still selling like hot cakes.
We are unloading two cars Monday.
Come in and get yours.

Hamaker Motor Co.

"Service Worth While."
Phone 1040. 8th and Klamath Ave.