



Rugged are both the scenery and roads an automobile driver encounters in Switzerland. The accompanying picture shows an American car, a Packard eight, coming down from the Furka pass with the glacier of the Rhone on the left. The picture was taken at a point 2114 meters above sea level.

### Warm Weather Is Found Hardest On Automobile Tires

AKRON, March 13.—The warmer the weather the faster tire treads will wear, according to tire experts here, who have discovered that the rate of wear will increase from 50 to 100 per cent with an increase in temperature from 40 to 80 degrees.

Because of this treads will wear much faster in summer than in winter, while on wet or snowy roads in winter the rate of tread wear is reduced to a very low point, it is declared. Tires wear down much more slowly in cool wet spring, or fall weather than during the hot summer months.

Tire test experts have observed a big difference in the rate of wear in tires that have been driven from a temperate zone to a warmer climate. When driven back to a cooler climate again a lessening of the rate of tread wear is promptly observed.

#### High Speeds Expensive

Furthermore, most wear occurs when the car is being driven at high speeds, the difference being most noticeable at speeds over forty miles an hour. Longest service comes from tires on cars driven by careful drivers.

Differences in the quality of the highway, which have been blamed for a lot of premature wear on tires, are blamed for good reason, it is declared. Various kinds of road surfaces make a difference of 300 per cent or more of tread wear. In arriving at these findings engineers observed tire performance in several million miles of tests.

#### MARK CONNECTING RODS WHEN REMOVING THEM FOR REPAIR WORK

Connecting rods and caps should always be marked when removed for repairs. Always make sure that bearing caps of the connecting rods are placed with all holes facing the direction in which the engine runs. This is especially important with an engine using splash lubrication, because the oil is forced into these holes when the engine is running.

Forest Grove—Masonic and Eastern Star children's home will cost \$32,000.

### Overland Started With 24-lb. Pull

The extent to which motor car engineers can go in reducing rolling friction in an automobile is shown in a recent test made by the Willys-Overland Pacific Company with an Overland Six as the car which was being tried out.

A spring scale was used to determine the actual rolling resistance. This scale was carried between a rope attached to the front axle of the car and a handle held by a woman who was to furnish the motive power to move the car.

The position of the scale showed just how many pounds pull was necessary to start the car and then to keep it moving on a level piece of road.

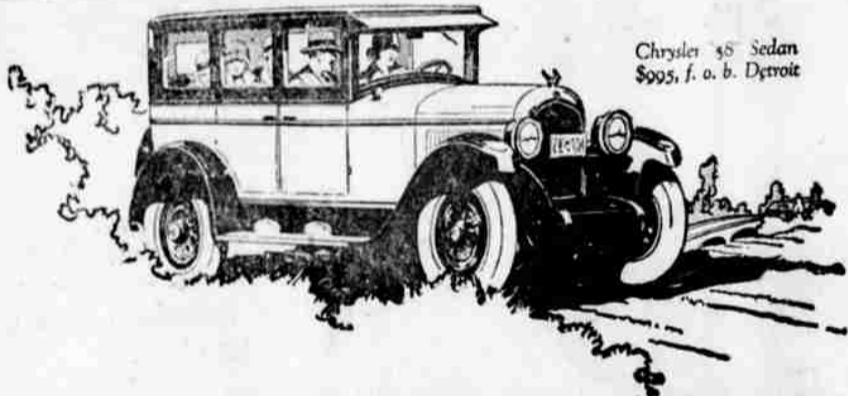
It actually took 24 pounds pull to start the sedan from a stand-

ing position and after it started rolling the springs dropped back until the pull was but 10 pounds and this pull was sufficient to keep it rolling at a walking speed.

Engineers say that one horse power is equal to 500 pounds of the amount of energy required to move 500 pounds one foot in one second. The total horse power of the Overland Six motor is equivalent to 20,000 foot pounds and it takes but a ten pound pull to move the weight of the car itself after it is started.

The statement, which was proven in the test, goes a long way to support the contention of Overland engineers that there is more usable power in this car per pound of weight than in any other light six of its class.

Medford—Building million dollar water system will employ 100 to 200 men.



Chrysler '58' Sedan \$995, f. o. b. Detroit

## PRECISELY THE SAME QUALITY—PERFORMANCE—APPEARANCE—AT ELECTRIFYING NEW LOWER PRICES

Since the Chrysler "58" was announced last June, nearly 10,000 men and women have testified every month by their orders that this wonderful car gives most for the money.

Such striking performance advantages as 58 miles an hour, 5 to 25 miles in 8 seconds and 25 miles to the gallon of gas—combined with many other outstanding superiorities—won for it instant acceptance which caused it to outsell competition everywhere in its own particular price group.

Now the electrifying new lower prices make Chrysler "58" more unmistakably than ever the value supreme in its class.

We are eager to show you that at these new lower prices Chrysler "58" continues to offer precisely the same quality—precisely the same performance—precisely the same fine appearance—precisely the same beautiful body and chassis—which those who know motor car quality agree have placed Chrysler "58" on the topmost value pinnacle.

## CHRYSLER "58"



NEW "58" PRICES  
CHRYSLER "58"—Touring Car, \$1495; Roadster Special, \$1695; Club Coupe, \$1895; Coach, \$2095; Sedan, \$2295. Disc wheels optional. Hydraulic four-wheel brakes at slight extra cost.

CHRYSLER "70"—Phantom, \$1995; Coach, \$2195; Roadster, \$2395; Sedan, \$2595; Royal Coach, \$2795; Brougham, \$2995; Royal Sedan, \$3195; Crown Sedan, \$3395. Disc wheels optional.

CHRYSLER IMPERIAL "80"—Phantom, \$2495; Roadster, (disc wheels optional, standard wheels optional) \$2695; Coach, four passenger, \$2895; Sedan, five-passenger, \$3095; Sedan, seven passenger, \$3295; Sedan-limousine, \$3495.

All prices f. o. b. Detroit, subject to current Federal excise tax.

Dealer is authorized to accept the convenience of time payments. Ask about Chrysler's "Buy Now" plan. Chrysler dealers and superior Chrysler service everywhere.

Chrysler reduced delivered prices give buyers immediate benefit of the new lower tax rate.

HOWIE MOTOR CO.

Phone 370.

12th and Main.

### Uniform Traffic Laws Are Said To Be Needed

Uniformity in state and local vehicle acts and traffic regulations is necessary to safe, economical and practical use of highways. This statement was made by the committee on uniformity of laws and regulations of the national conference on street and highway safety in a report recently. It will be presented at the second national conference this month.

The committee, appointed by Secretary Hoover last year, to study

traffic regulations as they are concerned in safety, drafted a model motor vehicle code consisting of three acts. These acts, which the committee suggested for adoption by the states, provide for motor vehicle registration and certification of title, licensing of operators and chauffeurs and operation regulations, including rules of the road.

Under the license act drivers of school buses would have to be at least 18 years old, and drivers of public vehicles 21. A twenty-mile speed limit for residential sections and thirty-five miles for rural districts were recommended.

### FLASHY COLORED AUTOS

Solid black and dark blue finishes that have prevailed for many years on automobiles, are slowly giving way to colors both inside and outside. The coming spring will show the greatest variety of hues and tints known to the automobile industry.

The increase in number of automobiles in use in the United States last year over 1924 shows an average now of one car for every five persons instead of one in every six as in 1924.



## Spring is around the corner — is your car ready?

You will soon be putting your car to harder use... you will be taking those longer trips you have been planning. Is your car in shape, ready to take you there and bring you back? Now is the time to give it your attention. "Western Auto" salesmen are ready and willing to assist you. Below we list a few necessities at pleasingly low prices. Check your requirements now.



### Tools and Repair Materials

**Wrenches**  
We have wrenches for every conceivable job on a motor car. Our complete line includes such well known brands as Billings & Spencer, Diamond, Stillson, and Wacker, field at prices ranging from 35c to \$1.80.

**Screw Drivers** ..... 10c to 95c  
**Pliers** ..... 20c to \$1.45  
**Punches** ..... 20c to 95c  
**Wheel Pullers** ..... 47c to \$1.25  
**Socket Sets** ..... 85c to \$8.50  
—and every tool necessary for a well equipped tool box.

### Spring-Eez

The lubricant with a penetrating rust solvent.  
3 ounce can 30c, 1/2 pint can 60c, 1 pint can \$1.00.



### Gaskets

—of copper, asbestos filled, accurately made—30c to \$1.60, according to car and model.

### Gasket Cement

2 ounce bottle ..... 20c  
4 ounce bottle ..... 35c  
1 pint can ..... 70c

### Sheet Cork

10c to 95c, according to the thickness and size.

### Valve Grinders

The "Little Sioux" valve grinder automatically advances the valve periodically on its seat. Our price, \$3.35

### "Favorite" Valve Grinder, for Fords

Valve Lifters, 45c to \$2.50 each.

### Valve Compound

"Western," per box ..... 25c  
"Clover," 2 ounce can ..... 30c  
"Volcano," 4 ounce can ..... 25c

### Bearing Scrapers

25c up.  
Soldering Irons 20c to 35c.  
Wire and Bar Solder, 10c to 95c, according to weight.  
Blow Torches, 2 sizes, \$5.75 and \$6.50.

### Are Your Brakes Dependable?



### "Neverburn" Brake Lining

Makes your car safe—always dependable—long wearing. "Neverburn" is made of extra long fibre asbestos and interwoven with base of tough counter wire. It is proof against heat, friction, oil and grease—priced from 25c to 75c per foot, according to size.

### Ford Transmission Set

wire. Set for 1926, \$1.45. 1925 and older models, complete with rivets, \$1.35.

### Solid Rivets

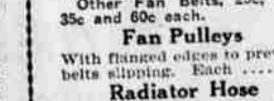
Are copper in 1/2-pound packages in various lengths and thicknesses—per package, 20c.

### Split Rivets

Per box of 100 ..... 23c to 25c

### Brake Wafers

Per box ..... 50c



### Fan Belts and Radiator Hose

The "Cord" fan belts are end-lace—made of several piles of strong fabric scientifically treated. 25c to \$1.90, according to make of car.

### Other Fan Belts, 25c, 30c, 35c and 60c each.

### Fan Pulleys

With flanged edges to prevent belts slipping. Each ..... 75c

### Radiator Hose

Of the very highest quality. 25c to 85c per foot, according to size.

### Belt Fasteners, 15c each.

### Hose Clamps, 7c to 10c, according to size.



### Clean-up Materials

**Chamois**  
Size about 16x26 inches, \$1.15  
Size about 20x32 inches, \$1.80

### Sponges

Small Velvet ..... 25c  
Large Velvet ..... 50c  
Extra quality small wool, 50c  
Large wool ..... \$1.25

### Cheesecloth

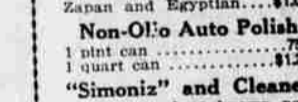
5-yard roll ..... 25c

### "Freeman's" Dust Cloth

Specially prepared—it absorbs the dust and dirt—comes in metal container. Prices, 50c each.

### "Shino" Mitten Dusters 65c each.

Wool Dusters 85c to \$2.25.



### Imperial Polish

Removes the mud and water spots, brings out the beautiful luster of the finish—requires very little rubbing. For all finishes, including Duco, Zapan and Egyptian... \$1.00

### Non-Oil Auto Polish

1 pint can ..... 75c  
1 quart can ..... \$1.25

### "Simoniz" and Cleaner

One of the best known polishes on the market. Per can ..... 50c

### Golden Star Polish

Half pint can ..... 45c  
Pint can ..... 55c  
Quart can ..... \$1.00

### Shine-Brite Body Polish

Pint can ..... 85c  
Quart can ..... \$1.10

### "Western" Top Dressing

Will restore cracked surface and waterproof the top. 1-pint can for Pantosec tops, 65c; 1-quart can, \$1.15; 1-gallon can Khaki for sports tops, \$1.50.

### "Leath-r-nu"

For leather or imitation leather upholstery. 1/2 pints and quarts, 55c, 95c and \$1.40.

### Seat Cushion Dressing

1/2-pint can ..... 40c  
1-pint can ..... 75c

### Varnish, Paints and Enamels

We carry a complete line of the very best quality in a large assortment of shades and colors. The prices are unusually low.

### Spoke Brushes

The construction permits easy access in cleaning either wood or wire wheels. Genuine Hair Bristol brush, 65c.

### SPECIALS FOR THIS WEEK



Lee "Duro-Bilt" Universal—One should be in every tool kit. Saves your clothes, cleaning and laundry bills. Made of good grade khaki in one piece, reinforced at all straining points. Reduced during this week to ..... \$2.98



"Perfection" Wool Dusters—Ideal for automobile and furniture cleaning. The soft, curly, long combed Canadian wool will not scratch the highest finish. Washable. 8-inch handle, 3-inch wood duster. Lowered this week to ..... 65c

More than 125 Stores in the West—  
Stores Open Saturday Night Until 9  
**Western Auto Supply Co.**  
7th at Pine.



Ask for 1926 Catalog It's Free