

Here and There RADIO On the Air



...GIVES FIGURES

the telephone wire from miles away. Similarly, the sound is so concentrated and amplified by radio that the vibration induces the affected ear drum to produce the desired effect.

"Some of the experts say that the best set for a deaf person is one of four or five tubes. A single tube will amplify the vibration 25 times; the second tube increases it about 625 times, and three tubes increase it 15,000 times, and so on.

"Specialists in diseases of the ear say that they have not only known of very deaf persons who heard the radio perfectly, but that the condition of deafness has actually been improved by practice with the radio."

Will Baldwin, Atwater-Kent dealer, tells one that isn't so bad. He says he heard two broadcasting companies recently risk this one:

Ernest—Say, Bill, did you hear what the flea said to the elephant when they were getting on the Ark?

Bill—Why, no, Ernest, what did the flea say to the elephant?

Ernest—Quit shoving, big boy.

WIN SAYS CAN HEAR

of the Baldwin says that radio better than deaf prospects.

"You have not many persons so deaf that they cannot hear," says the man who has made possible the radio reception we know today.

Being non-oscillating, the F-5-M tunes without squeaks and howls or hissing sounds. It is non-rattling and will not interfere with your neighbors' sets.

You'll have reason to be proud of your De Forest, by reason of both its appearance and its performance.

Stewart-Warner Radio Special The set with the "wallop" and Big Full Tone. Ten sets to arrive by express and sell at Ten a month. First payment just right. Earl Shepherd—507 Main St.

RADIOLA 104 IS LATEST ARRIVAL

The latest development in the loud-speaker field, the Radiola 104, has just been received by the Baldwin Hardware company. This speaker, which is described by the manufacturer as being a revolutionary departure both in performance and mode of operation, has only been on the market for about two weeks, and is the first to be received in Klamath county.

The "104" provides distortionless reproduction at volume equal to that of an orchestra or band playing at the broadcasting station, and does this with a marked fidelity of tone.

"Radio Loud-speaker 104 introduces to the listeners an important point not achieved in ordinary types of loud-speakers, namely, faithful reproduction of the base tones of the musical scale," said Will Baldwin, in talking today of this new addition to the R. C. A. family. "It

also reproduces the higher frequencies in the musical scale which are lost entirely in many loud-speakers of the horn type. With this speaker an important fact is that the volume may be varied from a whisper to a torrent of sound without the slightest loss in fidelity or clarity."

SPEAKING OF AMPLIFIERS

What's the world's greatest broadcasting station? The cricket.

When this tuneful insect draws his bow across his fiddle he emits more sound, in proportion to his size, than anything else on earth. He weighs so little that he scarcely weighs anything at all, but his chirp is heard for hundreds of feet. If a man were as noisy in proportion to his stature, he would send forth a roar that could be heard hundreds of miles.

There isn't any moral. This is just a salute to the cricket.

Try a News Class Ad.

Stewart-Warner Radio Special The set with the "wallop" and Big Full Tone. Ten sets to arrive by express and sell at Ten a month. First payment just right. Earl Shepherd—507 Main St.

Radio Program

Sunday, December 6

KPO, 428.3 meters, Hale Brothers and Chronicle, San Francisco—9:45 a.m., non-sectarian church services; 5 p.m., organ recital; 6 p.m., States orchestra; 6:35, 8 p.m., Palace orchestra; 8:30 p.m., Seiger orchestra; 9 p.m., Toscha Seidel, violinist.

KGO, 361 meters, General Electric, Oakland.—11 a.m., 7:30 p.m.,

First M. E. church; 3:30 p.m., KGO Little Symphony orchestra.

M. E. church; 4 p.m., musicals; 6:30 p.m., Arcade orchestra; 7 p.m., organ recital; 8 p.m., program.

KHJ, 405.2 meters, Times, Los Angeles.—10 a.m., Dr. H. C. Culbertson, sermon; 10:30 a.m., First KFI, 467 meters, Earle C. Anthony (Continued on Page Twelve)



AN EXCEPTIONAL RECEIVING SET THE DE FOREST F-5-M

The product of the genius of the man who has made possible the radio reception we know today. Being non-oscillating, the F-5-M tunes without squeaks and howls or hissing sounds. It is non-rattling and will not interfere with your neighbors' sets.

You'll have reason to be proud of your De Forest, by reason of both its appearance and its performance.

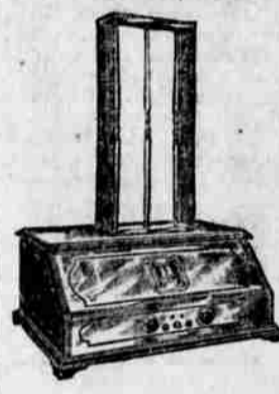
UHLIG'S ELECTRIC STORE
Phone 234 1026 Main Street



Just Arriving

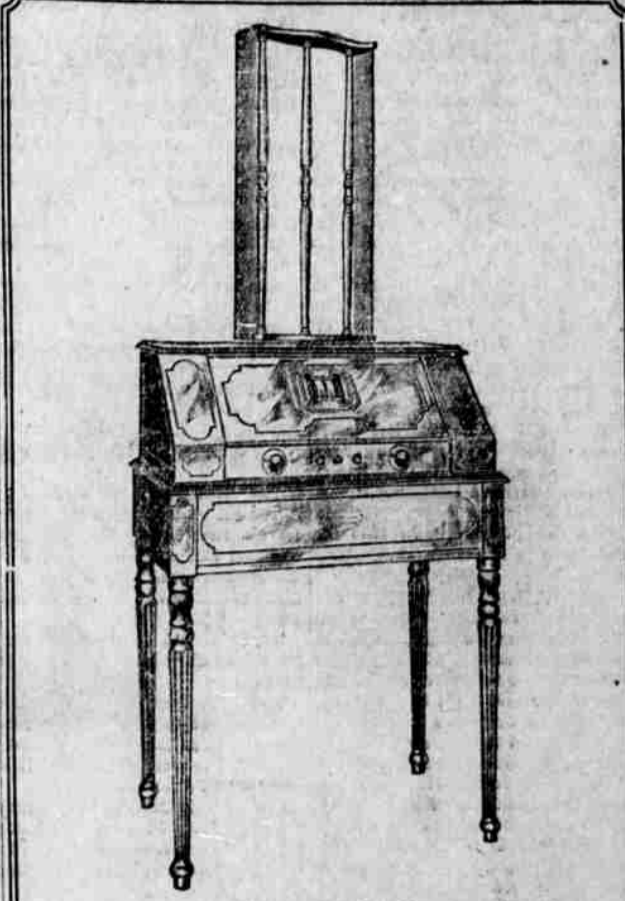
This new style 20 Radiola is being delivered in limited quantities. It has 5 tubes, dry batteries and peculiar type of tuning.

EARL SHEPHERD, 507 MAIN



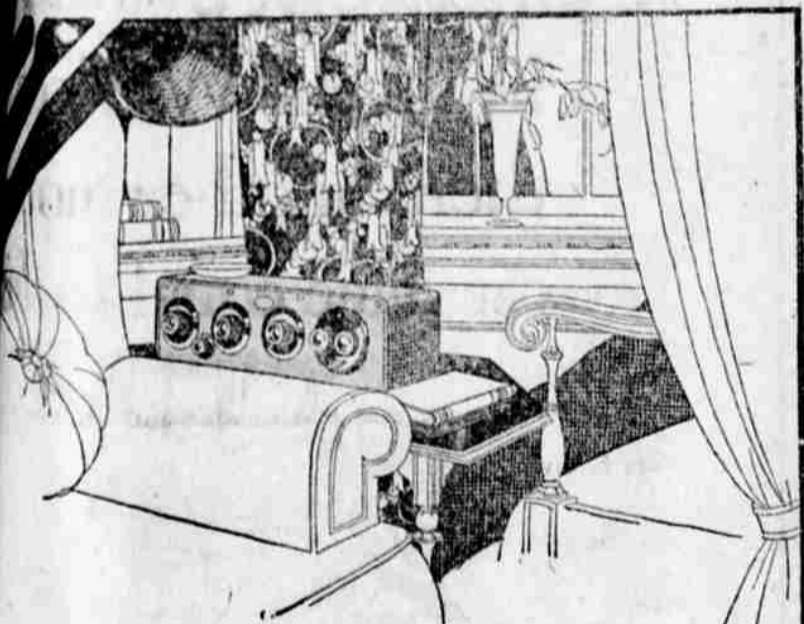
New Six Tube Table Model

This is another Super-heterodyne Radiola with interesting features. On display with 22 other different radios at Earl Shepherd's, 507 Main St. Store.



New Arrival! 8-Tube Superheterodyne Radiola

Among the sets on display at the Earl Shepherd Radio Department is this new arrival. They say it "speaks for itself."



ATWATER KENT RADIO

A RADIO for an end-table!... Let us show you a radio as neat as any other fine electrical instrument, as unobtrusive as a well-trained servant, as small as a row of a dozen books, as dependable for all-round performance as every other Atwater Kent product. The Atwater Kent Model 20 Compact is only 19 1/4 inches long and 6 1/2 inches high! Come in. We are always glad to demonstrate any Atwater Kent Radio.

Baldwin Hardware Co.
"THE WINCHESTER STORE"
Phone 261 416 Main St.

One Dial Magnavox



Stewart-Warner



Stromberg-Carlson



Drawing Room Stromberg-Carlson



Radio— In Infinite Variety

Radio is Music and therefore an important part of our line. A check yesterday revealed 23 different styles of radio embracing seven makes. One reason for the success of the Music Store in radio is the fact that in the past they have sold hundreds of musical instruments, the purchasers of which will return to the Music store for their radio.

The music store is used to and able to sell radio on easy payments, therefore, ten dollars or so a month sells many radios. Demonstrations any evening by appointment. Buy now, avoid the Christmas rush and get your aerial up early.

Earl Shepherd Co.

Pianos, Victrolas, Radios.
507 Main St. Phone 282

Grebe Synchronphase Radio

