

Here and There RADIO On the Air

ARTISTS PROGRESS

of Famous Men Make Radio Easier

for an expression for broadcasting the artists throughout A. Atwater Kent

at the favorable plan to broadcast. The problem of programs has been one. In the first development of every has been so rapid, few precedents to

of radio programs of giving the vast what it wanted and the stations that have so much time and making this question of the best than's

to work out pro- under my and I have out weekly pro- but an easy task. artists of the mus- been enthusiastically included, but the dif- that only a small of the music loving has been able to deal voices. So, it that if a plan could which a worth while best artists in Amer- over the radio, while to try to broadcast.

not altogether an we saw many obstacles, but I found of national, and reputation, were in the air." They that their appear- broadcasting pro- gram sequence in of radio as an part to, and expressed the step to be of music, made the fact, without of the art- have been im-

Program

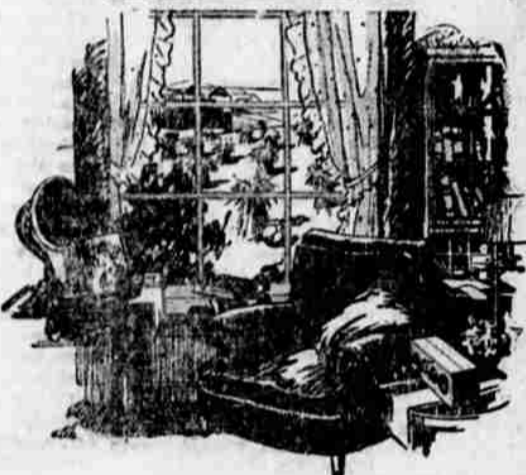
November 22
Hale Brothers
San Francisco—9:45
church services;
6:35 Pal-
1 p.m., Palace or-
1:30 p.m., Seiger's
General Elec-
11 a.m., and 7:45
First Baptist church
11 p.m., KGO Little
Express, Holly-
Presbyterian church
2 p.m., musical

program: 7 p.m., Presbyterian church services; 8 p.m., Ambassador orchestra.
KHL, 405.2 meters, Times, Los Angeles.—10 a.m., sermon Rabbi Maurice R. Toshnor; 10:30 a.m., Methodist church service; 4 p.m., musical program; 6:30 p.m., Arcade orchestra; 7 p.m., organ recital; 8 p.m., program.
KFI, 497 meters, Kaye C. Anthony Co., Los Angeles.—10 a.m., Los Angeles church federation; 4 p.m.,

Vespers; 6:45 p.m., Father Ricard's weather forecast, music appreciation chat; 7 p.m., organ recital; 8 p.m., classic hour; 9 p.m., program; 10 p.m., Packard orchestra.
Monday, November 23
KPO, 428.1 meters, Hale Brothers and Chronicle, San Francisco.—Reg- ular features; 1 p.m., Seiger orches- tra; 2:30 p.m., musical program; 5:30 p.m., children's hour; 6:40 p. m., Status orchestra; 7 p.m., Seiger

orchestra; 8 p.m., organ recital; 8:15 p.m., Wiley Winson talk on "What is Corrective Exercise"; 9 p. m., baritone solos by Austin Black. (Continued on Page Six)
EARL SHEPHERD CO.
RADIO SETS—SUPPLIES
Fresh Radio Batteries
507 Main St. Klamath Falls

ATWATER KENT RADIO



Give thanks for RADIO on Thanksgiving

MILLIONS of homes are thankful, this year, for the stimulation, the entertainment, the inspiration radio has brought into them.
For radio has broadened our horizons. It has brought the best music, the best thought, the most valuable information to those who were lonely and drowsy before.
Select your radio now—and select it carefully.
Choose the set that is carefully made of fine materials for sure, satisfactory, all-round performance; the set that is made in the largest radio factory in the world and therefore sold for far less than the price of other sets as fine; the set that is backed by a reputation built up through a quarter-century of making fine electrical equipment.

In short, select the Atwater Kent.
ON KPO WEDNESDAY
8 to 9 p.m.—Program by the Atwater Kent artists, under the direction of Ernest Ingold, Incorporated:
March from "The Debutante"..... Herbert
"Serenade"..... Drigo
Tone pictures of the North and South..... Bendix
"In a Persian Market"..... Ketelby
Grand Opera Selection "Aida"..... Verdi
March of the "Little Leadon Soldiers"..... Pierre
A Request Number.....
Soprano solos, "Gianna Mia"..... Primi
"Smilin' Through"..... Penn
Hear it Wednesday and you will agree that no finer program goes on the air at any hour of the week.



Model 20 Compact—Price, \$85.00



Model 20—Price, \$85.00



Model 10 (without tubes)—Price, \$40.00



Radio Speakers \$13 to \$30

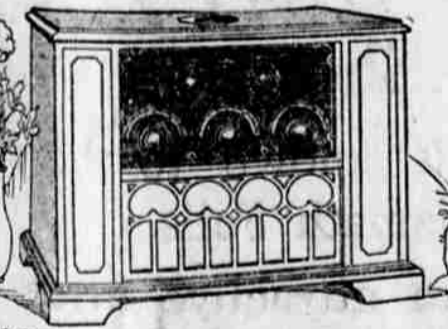
BALDWIN HARDWARE CO.

"THE WINCHESTER STORE" 416 Main St. Phone 261

RADIO Parts and Repairing

Browning-Drake 5 Tube
Best Superhetrodyne 8 Tube
Phone 397-W
For Demonstration In Your Home.

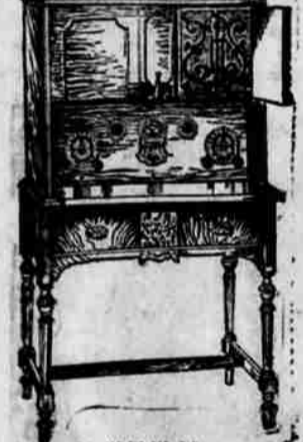
Floyd Henriot Co.
Auto Electricians Willard Batteries
234 Main St.



FOREST F-5-M RADIOPHONE

Self-Contained Batteries and Speaker
precision and skill akin to the watch-making art in nicety of finish, choice of materials and economy of space, produced a receiver of unexampled constancy and uniformity of operation. It tunes in the stations simply and positively. The setting of each of the three dials is practically permanent. Once a station has been located and the settings that station will always be gotten at the same dial settings regardless of the length of antenna or the location the set is used.
F-5 is non-oscillating, and so it tunes noiselessly without squeaks, squalls or hissing sounds. It is also non-radiating and will not disturb neighboring sets.
The owner of a DeForest F-5 may be confident that his home will not suffer by comparison with any set, and that he anticipates the trend of radio development and will be satisfied and satisfactory for years to come.

WHLIG'S ELECTRIC STORE
1026 Main St.



After The Thanksgiving DINNER

—Will there be an evening of enjoyment with your new radio?

Do you realize that a good radio can change your whole home life—bring the news of the day, plays from the theater, music from the great hotels and roof gardens, music from the operas and Symphony Orchestras?

Several of our fine radio sets sell on monthly terms as low as \$12 a month, and the first down payments are within reason.

Fully half of the radio sets sold today are bought without listening to them—the purchaser giving the order to a reliable dealer and selecting the set best suited to his pocketbook.

However, we gladly demonstrate radio any evening by appointment.

Why not order that radio now—today, and give the family still another cause for Thanksgiving?

Earl Shepherd Co.

Pianos, Radio, Victrolas
507 Main St. Phone 282