

### Soprano Is To Sing At Church Musicale

Residents of Klamath Falls who are patrons of music will be happy to learn of the presentation of Miss Elizabeth Spencer, eminent soprano, assisted by Miss Lucille Collette, who will be heard in a unique recital at the Presbyterian church on Saturday evening, November 21.

Miss Spencer is one of the best known sopranos on the concert stage. Her voice is rich and colorful, of genuine soprano quality. With this unusually beautiful voice is linked a personality rarely met with and these qualities combined with splendid musicianship make Miss Spencer a decided favorite in the concert field.

Miss Collette is an artist of considerable reputation, and the concert will undoubtedly prove one of the outstanding features of the musical season here. Admittance will be by card of admission only, which may be obtained from Wirtz music store.

### Buenos Ayres Held Mecca for Battlers

PITTSBURG, Nov. 16.—United News—The A. A. U. voted Monday to send an American boxing team to Buenos Aires to compete in the Pan-American meet April.

The representative team will be chosen after the national amateur championship bouts to be held in Boston, some time before the date set for the Buenos Aires tournament.

The sending of an American team follows for the participation of South American boxers in the last amateur championship tourney held in Boston last May.

The team will be composed of about eight boxers.

### CLUB WORK PROGRESSING DECLARES COUNTY HEAD

Expressing himself as highly satisfied with the activities of Klamath county boys' and girls' clubs, Frank W. Sexton, county club agent, yesterday announced that one more girls' club had been formed. The latest is at Lanel Valley.

There are now five members, all of whom are enthusiastic about the work, Mr. Sexton said. "The girls," he said "have performed excellent work."

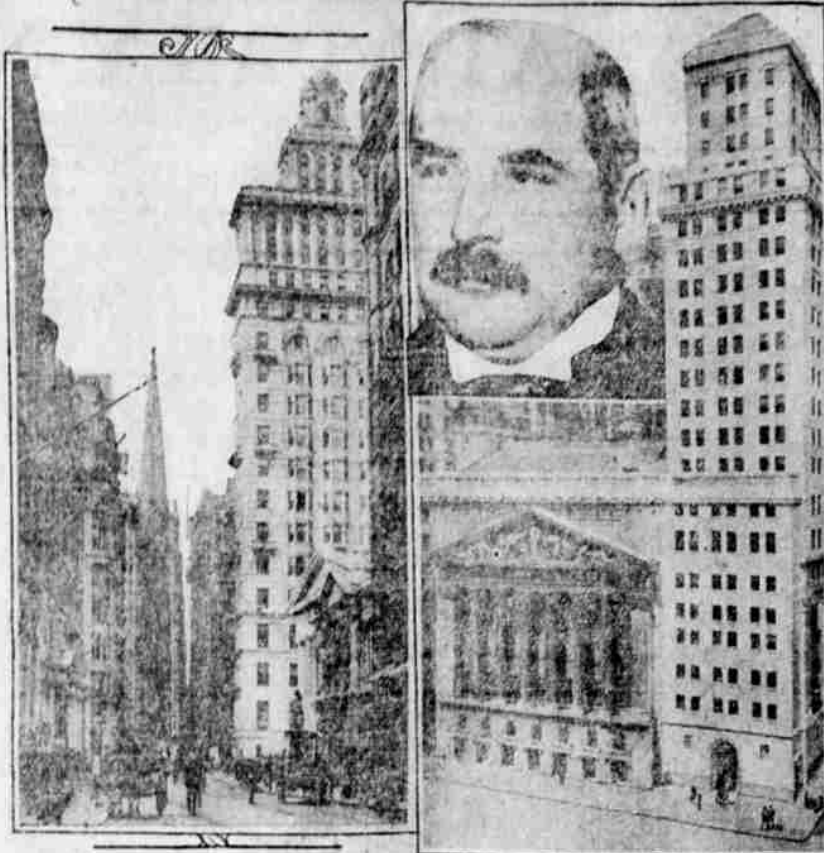
Mrs. Viola G. Dearborn, teacher, was chosen local club leader; Alma Brown was named president; Grace Brown was made vice-president; and Thelma Teare was elected secretary. Virginia Monros and Isabelle Teare are the other two members.

### VOLUNTEERS WANTED

The Klamath Sportsmen's association want volunteers to report to Game Warden Marlon Barnes before Friday morning to investigate conditions in the Tule lake district, with a view to ascertain steps necessary to dispose of the carcasses of ducks in that place. If you can go Friday morning for a three or four day stay phone 554. All arrangements will be made for your supplies.

Select your Christmas cards early at Southwell's. N15-18

### Wall Street Boom Making New Crop of Millionaires



A new crop of millionaires is emerging from the greatest boom in Wall Street in ten years. Leading railroad and industrial stocks are reaching the highest averages in history. Strength and activity of issues which have been financed by J. P. Morgan and Co., account for the characterization of the boom as a "Morgan market." Right, the New York stock exchange. Left, a view of Wall Street. Inset, J. P. Morgan.

### MRS. LEATHA PARKER ASSUMED NEW DUTIES

In the office in the Klamath county courthouse of A. C. Henderson, county agent, and Frank W. Sexton, county club agent, there is a new face.

The face is that of Mrs. Leda Parker, of Klamath Falls, who yesterday assumed her new duties as book-keeper in the office.

Mrs. Parker succeeds Thalia Newcomb, resigned, who has left the city for San Francisco. Mrs. Newcomb's resignation was accepted several days ago.

### BOX SOCIAL AT SWAN LAKE

Although the night was stormy, a large number of people attended the box social given at Swan school last Saturday night.

The pupils from both schools performed in a very creditable way. A special feature was a song "Swan Lake" the words composed by Mrs. Della Nichols, teacher of Lower Swan school. Another feature was an impersonation dance by Theron Swap, lately of Hollywood.

Sixty dollars was realized from the sale of the baskets. This money will be used to purchase a phonograph.

Many good times are planned for the future. The co-operation of these two communities is highly commendable.

Buy your Christmas cards at Southwell's. N15-18

The largest stock of Christmas Cards now on display at Southwell's. N15-18

### SCHOOL BOARD TO MEET ON NOV. 19

The second and final meeting of the Klamath county school board, with its budget committee, is to be held in the office of Fred Peterson, county superintendent of schools, in the courthouse next Thursday morning. It was announced yesterday.

The meeting will be called to order promptly at 10 a. m., it was said. The gathering is to be held in accordance with the law, 20 days after the first meeting.

Following the last budget meeting it was announced that, after there had been considerable slashing, the committee managed to keep within the six per cent tax limitation law.

Items allowed for next year, however, do not include the proposed erection of new structures which, officials say, the rapid increase in school attendance will make necessary. It is predicted that the voters will be allowed to express their sentiments as to a bond issue to take care of the new buildings.

### Radio Program

Tuesday, November 17

KPO, 428.3 meters, Hale Bros. and Chronicle, San Francisco.—Usual features: 1 p. m., Selger orchestra; 2:30 p. m., Patriotism Day talk; 3:30 p. m., Palace orchestra; 5:30 p. m., children's hour, stocks; 6:40 p. m., States orchestra; 7 p. m.,

**Come Early and Avoid the Rush**  
Normandy Bell Ringers at Elks Temple Thursday, Nov. 19 DANCING

m., Selger orchestra; 8 p. m., Danish Singing Society; 9 p. m., musical program; 10 p. m., Cabrera orchestra.  
KGO, 361 meters, General Electric, Oakland.—Usual features: 4 p. m., St. Francis orchestra, San Francisco; 6 p. m., concert; 7 p. m., news, weather, stocks, markets; 8 p. m., Radio Breeze, KCB; 8:10 p. m., Los Gatos high school orchestra.  
KLX, 568 meters, Tribune, Oakland.—7 p. m., news.  
KNX, 337 meters, Express, Hollywood.—Usual features: 1 p. m., garden talk; 2 p. m., mother's hour; 7 p. m., program; 7:45 p. m., health talk, Dr. Robert T. Williams; 8 p. m., programs; 10 p. m., Movie night, West orchestra.  
KHJ, 405.2 meters, Times, Los Angeles.—Usual features: 12:30 p. m., dance music; 8:30 p. m., children's hour; 7:30 p. m., "Dogs," H. M. Robertson; 8 p. m., program; 10 p. m., Hickman orchestra.  
KFI, 467 meters, Earle C. Anthony, Los Angeles.—5:30 p. m., matinee; 7 p. m., Snappy Kid orchestra; 8 p. m., program; 9 p. m., vocal program; 10 p. m., Packard Ballad hour.  
KGW, 491.5 meters, Oregonian, Portland.—10:30 a. m., music, news, weather; 12:30 p. m., Rose City Trio; 7:30 p. m., weather, market, news, sports; 7:45, 8 p. m., educational programs; 9 p. m., concert; 10 p. m., Multnomah dance music.  
KFOA, 454.3 meters, Rhodes store, Seattle.—12:30 p. m., Kiwanis

**EARL SHEPHERD CO.**  
RADIO SETS—SUPPLIES  
Fresh Radio Batteries  
507 Main St. Klamath Falls

**25¢**  
—is the right price to pay for a good tooth paste—  
**LISTERINE TOOTH PASTE**  
Large Tube  
**25¢**

### The EASY Vacuum Electric WASHER

(Electric-driven; Gas-heated)

By All Means See the 1926 Model

Free Demonstration Gladly Given

## IMPORTANT

The initial cost of a washing machine is not the important thing. THE IMPORTANT thing is to select one that will give you complete satisfaction for years and years to come.

To our knowledge there are EASY washers in Klamath Falls and Portland which have been used from 12 to 15 years and are still washing clothes. What other washer has that record?

No EASY washer has yet been known to wear out. The sturdiness and long life of the EASY washer is reflected in its resale value. Out of the thousands of EASYS in use, it is very seldom that you ever see an EASY advertised in resale columns of the newspapers. The values they bring testify to their goodness and to the public's belief in them.

### WHY EXPERIMENT?

Buy an EASY and you will get **SATISFACTION**

Sold by **GOLDEN RULE CORPORATION**

### GET YOUR GUNS AND SHELLS HERE

## THE SMOKE

SPORTSMEN'S SUPPLIES

**A. D. LAMBERT, Prop.**



### Song Recital by ELIZABETH SPENCER

This is a golden opportunity for Klamath Falls to hear the famous soprano. Assisting her will be Lucille Collette, well-known pianist.

Miss Spencer's appearance here makes it possible to perform an interesting musical experiment. In some of the numbers, the famous artist will compare her voice with its RE-CREATION by Mr. Edison's new phonograph.

**Saturday, November 21 at 8:15 P. M.**  
**Presbyterian Church**

A number of complimentary invitations are available for this special concert. Call, write, or telephone for them, at once. They will be issued in the order of application.

**Wirtz Music Store**  
122 So. Sixth St.  
Klamath Falls, Ore.  
Phone 125

### Disease of Minded, Say Late Women

Call, Nov. 16.—"Pitting" is a disease which mends dark nights. Girls who practice do not get firm.

the annual conference of college women's line here, charitably getting evil by placing on the men.

was of opinion that was the result of

WANTED  
Sportsmen's association to report to Game Warden Marlon Barnes before Friday morning to investigate conditions in the Tule lake district, with a view to ascertain steps necessary to dispose of the carcasses of ducks in that place. If you can go Friday morning for a three or four day stay phone 554. All arrangements will be made for your supplies.

**L. ASTOR**  
New, Modern  
Private Toilet  
Dances and Theatres  
Tied from \$1.50

## Winter Excursions

REDUCED  
**ROUNDRIP FARES**  
—between Pacific Coast points now effective. Long limits; stopovers.  
Save travel funds—buy round-trip tickets. Substantial reductions in effect throughout the winter season.  
And plan your trips to get most-per-dollar value. Any Southern Pacific agent will gladly help you. Get his advice and aid.

Comfortable trains at convenient hours every day—most everywhere.

### Southern Pacific

J. J. MILLER. Phone 709.  
District Freight & Passenger Agent.  
Room 205 Hopka Bldg. 8th and Main Sts.  
Klamath Falls, Ore.