

# SATURDAY GAMES WILL GIVE LINE ON BIG WARRIORS

NEW YORK, Oct. 21.—(United News)—Although the season is set at that stage when the comparative strength of teams is a matter of guess work, fans this Saturday will have an unusual opportunity to obtain a little light on the great question—Does the east or west produce the best teams?

Pennsylvania has come through the early fall with one of the best records among eastern eleven. The university of Chicago—last year's big ten champion—has demonstrated that the light in the middle western conference this season is likely to be between the maroon and Michigan.

These two teams, representing the "best" in each section, will meet at Philadelphia. Chicago has a heavy line that averages 184 pounds, and a powerful backfield. Coach Stagg has been noted for his defensive teams.

But while the Chicago-Pennsylvania game looms biggest this week, there are several other encounters in the east which will claim attention.

The army, which defeated Notre Dame and destroyed the Rockne myth last Saturday, will entertain St. Louis university. It is hardly likely that the army will find as much opposition in this Catholic institution as it did last week.

Dartmouth, one of the four big undefeated teams of this section, will journey to Cambridge, with the aim of adding an insult to Harvard's injury of last Saturday, when the Holy Cross eleven upset the dope.

Yale meets an old enemy at Providence. She has not yet recovered from the defeat by Pennsylvania last week, and although the game normally would cause little uneasiness at New Haven, the bull dog is training hard, with the idea in mind that defeat by Brown is within the realm of possibility.

The other member of the big three which made the best showing for the trio last Saturday against the navy, will entertain Colgate. Princeton, having held the navy, should be the favorite over the New York eleven, which only was capable of breaking even with Lafayette.

# 10,000 SPIRITS HAVE BUSY BUZZ

MILWAUKEE, Oct. 21.—(United News)—Three hundred earthly individuals and 10,000 spirits are in attendance at the 33rd annual convention of the national spiritual association here.

Thomas Grimshaw, who has just returned from the international convention of spiritualists in Paris, is authority for these remarkable statistics. "The spiritual attendance, of course, is very elastic," said Grimshaw, who is head of an institute where mediums are trained. "I set the figure at 10,000 just to get it in round numbers."

"Our evening services are devoted to the receiving of messages from those who have passed on. There is no way of telling how many spirits may be called. We will communicate principally with former prominent members of the association. They will guide us in our work."

Grimshaw said the convention was in no way a "spook show." The spirits will not appear as "ghosts," he said, but they will be near enough that a score of the country's leading mediums who will conduct the nightly "message" services can converse with them.

One of the principal purposes of the present convention is to stimulate the training of mediums and the work of spiritualistic missionaries throughout the country.

At Tuesday night's meeting James Abbott, editor of the National Spiritualistic Journal, declared spiritualism will outlive all other religions because it is scientific.

"Spiritualism is always in gear, while other religions are out of order," said Abbott. "The church has always stood in opposition to scientific discovery and as a result the minds of its leaders list to starboard. Even evolution is too much for them. Instead of making man from monkey they make a monkey out of a man."

"Spiritualism is the only thing that accepts what nature has to offer. Not until the advent of spiritualism was an organized study of man ever made."

# Japan Erects Great New Parliament on Fire Ruins



A great new home for parliament of modern, and probably Occidental architecture, is being planned by the Japanese government to replace the frame imperial diet buildings destroyed by fire. The house of peers is seen a mass of flames, with sparks igniting its brother house of parliament and spreading over a section of Tokyo, while firemen, soldiers and civilians battle it futilely.

United States Department of Agriculture, Bureau of Biological Survey, Time of Sunrise and Sunset at Lakeview, Oregon, (123rd Meridian Line).

Table showing time of one-half hour before sunrise and sunset, for the purpose of indicating when, each day during lawful open season, the hunting of migratory game birds may begin, or must cease, respectively, to abide by the requirements of the Federal Migratory Bird treaty act regulations.

Add five minutes to sunrise and sunset for the region around Klamath Falls.

Column headed "Start A. M." gives the time when shooting may start, as the half hour has been subtracted from the time of sunrise.

DATE	Start A. M.	Stop P. M.
October 22	5:53	5:19
October 23	5:54	5:19
October 24	5:55	5:17
October 25	5:56	5:16
October 26	5:58	5:14
October 27	5:59	5:13
October 28	6:00	5:12
October 29	6:01	5:10
October 30	6:02	4:59
October 31	6:04	4:55

## Radio Program

KFI—Earle C. Anthony, Inc., Los Angeles. Pacific Standard Time. 467 Meters. Schedules are P. M.

THURSDAY, OCTOBER 22  
5:30—L. A. Examiner Matinee.  
6:00—KFI Nightly Doings and Amusement Information Service.  
6:15—Radio Motorogue Resort service, courtesy of Mr. Hewitt.  
6:45—KFI Radiatorial Period.

7:00—Program arranged by Theron Bennet, composer-pianist, with Theron Bennet's Collegiates and other assisting artists.  
8:00—Program presented by the Artist Students club of Pasadena.  
9:00—Program presented by the Southern California Music company, from Chickering Hall, Los Angeles.  
10:00—Program presented by L. A. Examiner.

FRIDAY, OCTOBER 23  
10:45-11:05 A. M.—Betty Crocker Gold Medal flour home service talk: "Oysters."  
Balance of schedules are p. m.  
5:30—L. A. Examiner Matinee.  
6:00—KFI Nightly Doings and Amusement Information Service.

SATURDAY, OCTOBER 24  
5:30—L. A. Examiner Matinee.

6:00—KFI Nightly Doings and Amusement Information Service.  
6:15—Radio Motorogue Resort service, courtesy of Mr. Hewitt.  
6:45—KFI Radiatorial Period.  
7:00—Program presented by L. A. Examiner.  
8:00—Organ Recital, Dan L. MacFarland at the console of the Aeolian Residence Pipe Organ.  
9:00—Program featuring George Frenger in "Story Songs" and Emma Kimmel, soprano, and Violet Silver, violinist.  
9:30—Program presented by Mutual Motors, Inc., featuring music and "Joke Contest."  
10:00—Myra Belle Vickers presenting monthly program with artist pupils and assisting guest artists.

## ESSEX "4" TOURING

\$188.00 Down

Balance easy payments.

This car is a real buy. Shock absorbers all around, spare tires, lots of other extras.

## HOWIE MOTOR CO.

Phone 379.

12th and Main Sts.

# Never Before Such Dramatic Success

Never has any car enjoyed a more enthusiastic reception. Never have people been more outspoken in their praise of any car.

In many cities sales have multiplied beyond precedent. In some sections, the figures for the first ninety days surpass those of the entire preceding year.

More than 100 improvements and new prices—\$70 to \$350 lower—have created an unexampled nation-wide demand.

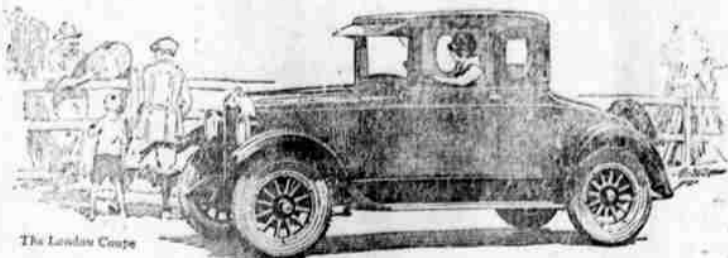
Such popularity is an infallible assurance of value. You can purchase a New Oakland Six with full confidence that you are selecting the preferred investment in the field.

Reader . \$ 975 (Old Price \$1095) Landau Coupe \$1125 (Old Price \$1295)  
Touring Car 1025 (Old Price 1095) Sedan . . . 1175 (Old Price 1545)  
Coach . . . 1095 (Old Price 1215) Landau Sedan 1295 (Old Price 1645)

All prices at factory—General Motors Time Payment Plan. Hereafter the lowest in the industry, have been made still lower. You can now save as much as \$40 to \$60 in your total payment costs.

## R. R. R. GARAGE

Klamath Ave., Between 8th and 9th Streets



The Landau Coupe

WINNING AND HOLDING GOOD WILLS.

# OAKLAND SIX

PRODUCT OF GENERAL MOTORS

6:00—KFI Nightly Doings and Amusement Information Service.  
6:15—Radio Motorogue Resort service, courtesy of Mr. Hewitt.  
6:45—KFI Radiatorial Period.  
7:00—Hollywood Foremaders, under direction of Jack Maguire, with Joey Kay, soloist.  
8:00—Program presented by L. A. Examiner.  
9:00—Program featuring Virginia Flohr, soprano, and Isabel Boyd Quartet.  
10:00—Packard Radio Club, featuring Bobbie Gross, Robert Allen, Marion Burton, Dick Barton, McLaughlin and Barable, Buelah Dunbar, June Lee and others.  
11:00—KFI Midnite Frolic, Don

Meaney presenting stars of the screen and stage. William Beaudine, master of ceremonies. Program until 1:00 a. m.

That Essex 4 touring for \$188 down sure has a lot of extras and is one real buy. See it at the Howie Motor Co., 12th and Main Sts. O21

## HOTEL ASTOR

2nd & 10th Los Angeles  
EVERY ROOM has PRIVATE TOILET.  
50% Baths New, Modern  
Close to Shopping District and Theatres  
FREE GARAGE - Tax'd from \$1.50

## ATTENTION!

### CARPENTERS and BUILDERS

C. D. Long, business representative of Carpenters No. 190, has been called away for a short time. His place will be filled by E. F. Duffey, secretary of the C. L. Council. All carpenters out of work kindly report at the Labor Temple at 9th and Walnut. Contractors and builders call 843-W for competent help. This service is for the employer and the employe.

## Milk and CREAM

Children need plenty of milk if they are going to grow. No mother need worry, her babies will thrive on

## Crater Lake Milk

The baby that gets milk here today walks and plays tomorrow.

Call 74

## KLAMATH FALLS CREAMERY

## THIS BANK AND THE FARMER

The farm that pays a profit must be run by business methods. We are glad to place the resources and services of this bank at the command of our farmer friends. Talk over your financial problems with us.

American National Bank  
Klamath Falls, Oregon

# La Vogue Stores

New Location  
8th and Main Sts

Where you can buy highest grade Mill Coats, Suits, Dresses, etc. Silk Hosiery and underwear for the money. All excess head has been eliminated. This saving we are to our customers. You not afford to buy in millinery or ladies' apparel before visiting store. You will save 25c to 35c on every item. Come and be convinced.

You'll be surprised by the nice velour coats all the popular shades with fur collar, cuffs and bottom. Several rows braided. Lined throughout. The price is only

\$15.00

Another surprising in black Polaire lined throughout with fancy striped material. Furette collar and cuffs. Only

\$12.50

New Balbriggan piece Dresses. Just thing for school or as well as for wear.

\$9.50

Rayon Silk Hosiery, the latest shades. pair for service.

50c

We handle exclusively the nationally advertised Ipswich and Kismet Hosiery. These hose come all the popular shades. We want you to compare them with those which you have been paying from 50c to more. If you once pair you'll never buy other brand.

PRICED AT \$1.00, \$1.65, \$1.95 THE PAIR

Extra heavy Rayon Jersey Vests.

95c

Suedine Silk Slips in popular shades.

\$2.95

Ladies' Felt and Trim Hats from

\$1.95 to \$19.50 A saving of from \$5.00 to \$5.00.

New arrivals every day. Before buying don't visit us in our new store.

EIGHTH and MAIN