

# WILLYS-KNIGHT MOTOR IS SOUND

Records which are being worked out by the engineering department of Willys-Overland Inc. show that there are many of these automobiles which have been driven in excess of 100,000 miles without motor trouble, and that this service is normally expected by the average buyer of a Willys-Knight car.

The investigation is covering the first models built ten years ago, and also covers many instances of extra hard service where cars have been driven up to 50,000 miles in one year.

In the Hood River apple country of Oregon there is a Willys-Knight Coupe-Sedan which has averaged better than 50,000 miles a year for the past two years without a cent spent for motor repairs, despite the fact that the car is put to unusually hard service.

In Central and Eastern California there are Willys-Knight cars which are used daily in mountain driving with mileage piling up to 1,200 miles a week that still have to undergo their first experience with a mechanic's tools.

A recent run by an owner from San Francisco to El Centro, thence to Los Angeles and return required an average of better than 375 miles a day, with the day calling for 472 miles through desert country and over steep mountain grades. The 472 miles were made in 15 hours total elapsed time, with no consideration given to the time spent for meals.

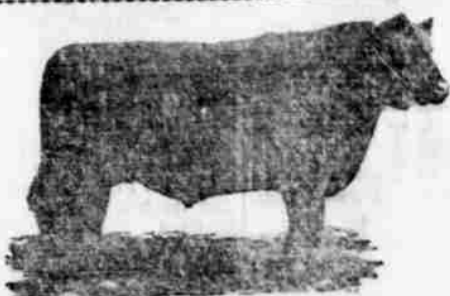
The car which made this trip had already been driven 27,000 miles and the motor has never been touched in any way.

There are instances where Willys-Knight motors have been driven up to as high as 200,000 miles and still maintain their original smoothness and power.

In every case where these old motors have been tested out for power, the results have shown that they develop a higher power rating than that which was considered their best performance when they were new.

The most recent development of Willys-Knight engineers, the addition of the Lancheester balancer to the motor, is expected to have a di-

## "Truth in Meats"



ADERDEEN-ANGUS STEER "QUEENMERE 24TH"

Grand Champion Pacific International Livestock Exposition, 1924. Bred, fed and exhibited by Congdon and Bates, Yakima, Wash.

At the Pacific International Livestock Exposition to be held in Portland this year, October 31st to November 7th, it is proposed to give a demonstration which will carry out the idea of "Truth in Meats."

Assisting in this work will be the Department of Agriculture, colleges of Oregon and the Pacific slope, packing-house people, stock-yard officials and commission men, and retailers as well. Six to eight live animals, nicely bedded down and properly cared for, will be graded from prime to common, and over the head of each will be posted the price on foot at which its kind is selling in the stock-yards that week. Directly back of them, in a refrigerator, will be shown carcasses from animals of a similar lot. These carcasses will also show the selling price

from the packer to the retailer. Further down in the refrigerator, will be shown the regular wholesale cuts of meat usually sold in the trade. These, too, will carry their proper pricing as regards the various grades.

Finally, in a counter will be seen all the retail cuts from these various packing-house lots; they in turn showing exactly what a choice cut from the choicest animal should sell for; bearing in mind all the time that the overhead in the retail store is just as much, pound for pound, on a common animal as it is on a choice one.

The purpose of this entire demonstration will not be to prove that the retailers are getting too little or too much for their meat, but rather to show the relative value of prime as compared with common meat.

## Skeletons Encased in Armor Plate, Are Found by Farmers of Indiana in Mound

SOUTH BEND, Ind., Oct. 9.—United News—Eight skeletons, one of them clad in copper armor, and a hoard of rare war weapons and bits of personal adornment have been found in a mysterious mound on the farm of Grove Vossburg, near Walkerton.

Vossburg, 70-year-old farmer, had long desired to know the secret of the mound, which, according to local tradition, dates back hundreds of years. Secretly excavating the pile of earth, he came upon a strange burial place. The eight skeletons lay in circum-

lar formation, arranged like the spokes of a wheel. Great copper breastplates, hands and other bits of armor adorned the skeleton of one man, who had apparently been of giant stature. Imbedded in this skull was a beautifully chipped flint arrow head.

The soft earth of the mound revealed other treasures. Three pounds of ore, believed to be either silver or white gold, lie with the bones. There were corroded copper bands, which antiquarians here believe were used to bind war clubs. Two pipe bowls, one of smooth black stone and the other carved with the replica of a fantastic monster, were found.

The belief that the bones are not those of Indians, but belong to the ancient and little known race of moundbuilders, has arisen due to the great size of the bones and the fact that skull formations are not those of Indian types.

rect bearing on securing even greater mileages out of the new motors than the abnormally high achievements of the past. An important after effect of the balancer, which does away with all motor vibration, is a direct and appreciable increase of power.



## At these New Low Prices the outstanding quality value among all motor cars

Never before have the great advantages of the Willys-Knight motor been available at such low prices.

Never before has such power, economy and smooth running, been offered in the great field of moderate priced cars.

You who have never tried the Willys-Knight motor, ride in this car—it will be a revelation to you.

No vibration—no valve noises—no valve trouble or adjustments.

Upwards of 100,000 miles of trouble free service proved by the average of thousands of owners.

Here is a motor car that you want.

**NEW PRICES**

**FOUR CYLINDERS**

Touring	\$1195.00
Coupe	1395.00
Coupe-Sedan	1395.00
Sedan	1450.00
Brougham	1595.00

**SIX CYLINDERS**

Touring	\$1750.00
Roadster	1750.00
Coupe	2195.00
Coupe-Sedan	2095.00
Sedan	2295.00
Brougham	2095.00

Whatever may be your notions regarding motor power—see what power we can show you in the Willys-Knight.

Whatever may be your notions of road performance—learn what we have to offer in this car.

Regardless of your preference as to number of cylinders—know what smooth running really is by trying the Willys-Knight.

This unusual motor cannot be judged by other standards. It occupies a position entirely its own.

We will take your present car in trade—and give you terms up to 18 months.

# WILLYS-KNIGHT Overland-Knight Sales Co.

Phone 899

4th and Klamath

## CHURCHES

**CHRISTIAN SCIENCE SOCIETY**  
Library Building  
Third and Main Sts.  
9:45 a. m. Sunday school.  
11:00 a. m. Sunday service.  
8:00 p. m. Wednesday meeting.  
Free reading room and free lending library open from 2:30 to 4:30 p. m. on Tuesdays, Thursdays, and Saturday.

**PRESBYTERIAN CHURCH**  
Merrill, Oregon.  
Rev. Chas. C. Hale, Pastor.  
10:00 a. m. Sabbath school.  
11:00 a. m. Morning worship.  
7:00 p. m. C. E.  
8:00 Evening service.

**GRACE METHODIST CHURCH**  
10th and High Sts.  
Thos. D. Yarnes, Pastor.  
10:00 a. m. Sunday school.  
11:00 a. m. Morning service.  
6:30 p. m. Epworth League.  
7:30 p. m. Evening service.  
Everybody is invited.  
Prayer meeting every Wednesday evening.

**THE SALVATION ARMY**  
Capt. and Mrs. E. Hopper in Charge all.

11:00 a. m. Rev. Osborn will speak.  
2:00 p. m. Sunday School.  
8:00 p. m. Evening service.  
Everybody cordially invited, visitors welcome.

**ST. PAUL'S EPISCOPAL CHURCH**  
Temporary Headquarters  
A. O. U. W. Hall  
10:00 a. m. Church school.

**FIRST BAPTIST CHURCH**  
A. E. Simmons, Pastor.  
9:45 a. m. Bible school.  
11:00 a. m. Morning services.  
6:30 p. m. B. Y. P. U.  
7:30 p. m. Evening worship.  
Prayer meeting every Wednesday evening at 7:30 p. m.

**ZION LUTHERAN CHURCH**  
Chamber of Commerce Rooms  
G. W. Hoffman, Pastor.  
9:30 a. m. Sunday school and Bible class.  
10:30 a. m. Morning service.

**IMMANUEL BAPTIST CHURCH**  
Eleventh and High Sts.  
W. W. Davis, Pastor.  
10:00 a. m. Sunday school.  
7:30 p. m. Evening service.  
A cordial invitation extended to

**SEVENTH DAY ADVENTIST**  
Public Library Bldg.  
Alva W. Walker, Pastor.  
(Sabbath Saturday)  
10 a. m. Sabbath school (Saturday).  
11:00 a. m. Church service.  
7:30 p. m. Prayer meeting Tuesday evenings.

**FIRST PRESBYTERIAN CHURCH**  
Sixth and Pine Sts.  
Arthur L. Rice, Minister.  
10:00 a. m. Church School with classes for all.  
11:00 Morning worship.  
Sermon: "The Christ of the Daily Task." Solo: "Like As A Father." Solo: "Josephine Lucas." Anthem: "God So Loved the World." Solo: "Stalder." Organ numbers: "Vain Cebaste," "Balsate," "Melcay," "Hector."  
6:30 p. m. Intermediate and Young People's C. E.  
7:30 p. m. Evening worship.  
7:30 p. m. "The God to Man Road." Pipe organ program: "Prelude," "Fancies," "Twilight." Final, "Andante." Lullaby. Anthem: "Soft As the Voice." Solo: "Not Ashamed of Christ." Wendell Smith.

**FULL GOSPEL CHURCH**  
Rev. E. A. Hunter, Pastor.

# 2 Weeks of Special Values

"Western Auto," always noted for exceptional values, offers thrifty motorists an opportunity for additional savings on accessories, supplies and repair materials during this Semi-Annual Event. Many articles not listed in this advertisement are included in the "Two Weeks of Special Values," to come early, as the sale ends October 24.

## Standard Quality—Regular Stock

**EXTRA SPECIAL**  
"Schrader" Tire Gauge

73c

Factory List Priced \$1.35

Every car owner should carry one. Buy at this special price. The gauge registers accurately the pressure in each tire—proper attention to this detail will increase the life of your tires. Comes in neat leather case. Limit one to a customer. For high-pressure tires only.

**EXTRA SPECIAL**  
"Comfy" Wind Wings

\$4.45

If you have long desired a pair of wind wings at low cost, here is an opportunity to fulfill your wish. The "Comfy" wing is suitable for all makes of cars—made of crystal plate glass with brackets of baked-on enamel. Can be adjusted to any desired angle.

\$4.45

Special Value Price.

**EXTRA SPECIAL**  
Automatic Windshield Cleaner

\$2.35

This cleaner needs no attention as it is installed, as it works automatically from the intake manifold vacuum tank. Leaves both hands free for driving. Absolutely indispensable for winter driving. Special Value Price, standard make.

**Durable Visors**  
Positively eliminates the glare of the sun and aids in keeping rain off the windshield. Made of rubber cloth material stretched over a light steel frame. The brackets are extra strong. A very serviceable visor at.....

\$1.45

**Genuine**  
**Boyce Motometer**  
With Fancy Cap

Just the cap for a Ford car! The red danger signal of this new style motometer warns the driver the instant motor troubles arise. The handsome wing cap adds to the car's appearance. The regular price of \$2.25 has been reduced, during the sale. (cap and motometer complete).....

\$2.83

Universal Motometer—Genuine Boyce popular size motometer. Special Value Price only.....

\$5.65

Extra Quality Bar Cap—A handsome cap of heavily nickel-plated solid brass, in sizes for all cars. Sell regularly at \$1.15 and \$1.45. Price during the Special Value Event.....

92c and \$1.11

**"Nobby" Locking Radiator Cap**  
With Monogram

The Peer of Radiator Caps Lends distinctiveness to any car. Protects motometer from theft and breakage. Solid brass, handsomely nickel-plated; cannot be broken—will not run. Fitted with three black Bakelite knobs. Furnished with a handsome monogram of your initial. Fits all makes of cars. Regular price, \$5.75. Special at.....

\$4.85

**TOP RECOVERS**  
—at Sale Prices

**Ford Touring Outfit**  
Recover your old Ford top with this low-priced outfit. Heavy black rubber cloth, stitched, ready to slip over frame. Complete with tacks and binding. Special Value Prices:

Ford Roadster, 1914 to 1922	\$3.90
Ford Roadster, 1922 to 1925	4.35
Ford Touring, 1914 to 1922	5.95
Ford Touring, 1922 to 1925	5.95

**De Luxe Recover for All Cars**  
Made of extra heavy weather-proof top material with long grain finish. This cover comes complete with beveled glass rear window and gypsy side wings. Special value prices—

Ford Touring	\$9.20	Chevrolet Touring	\$10.30
Ford Roadster	7.40	Dodge Touring	11.45

Prices on other cars quoted on request.

**Sport Model Locking Cap**  
This cap has many of the features embodied in the Nobby cap, including two black tips. Opens easily, yet cannot be taken off. Cap furnished with monogram of your choice. A very handsome cap at a low cost. Fit Ford and Chevrolet only. Special Value.....

\$2.95

**INTERIOR MIRRORS**

Seven-inch ground edge mirrors for open or closed cars. A clear view of the road behind is reflected in this mirror, thereby preventing many an accident. This is a regular value at 95c. Special at.....

67c

**Liquid X Cement**  
Stop that leaky radiator with a can of this non-falling solution. This is the same cement as carried by the world fliers. Universally recognized as the perfect liquid for sealing radiators. Regular price 70c. Special Value Price.....

52c

**Electric Horn**  
A motor driven horn that is an exceptionally strong tone note. Made by a nationally known manufacturer and guaranteed. Equipped with special bracket. Polished black enamel. Regular at \$3.45. Special Value at.....

\$2.95

**Get a Pair of Running Board**  
at This Low Price

Your car's appearance is greatly improved if these rubber mats are to it. Prevents wear on running board and prevents slipping when entering or leaving the car in wet weather. Especially good value at, each.....

**Aluminum Step Plates**  
Many motorists prefer all-aluminum step plates. Special price on this plate is.....

**The Smithkit Ash Receiver**

The Smithkit serves as a ashtray, holds the match and receives the ash. It is always ready for use. Removably detachable for cleaning. Finished in attractive colors. Special Value Price.....

\$1.45

More than 125 Stores in the West—  
**Western Auto Supply Co.**  
128 No. Seventh Street  
Klamath Falls

For Your Convenience Open Until 9 P. M. Saturday