

Here and There RADIO On the Air

WATER TAMES BATTERY CONTROL LIGHTNING BOLT FAVORED BY FANS

The timid folks tear down their lightning rods with the first rumbling of a storm, yet these same folks will tear down the telegraph wires, rain pipes, and lightning rods, and are the lightning like in radio literature, the mystery of radio that has caused so many apprehensions. However, the popularized radio of this year and lightning work widespread have forests of antenna in the country. It is time that the lightning fable should be put to rest. The question arises, "What is a radio antenna?" First, a conductor of electricity clear and high above the ground. Secondly, a vacuum tube or vacuum lightning arrester. Many of the old time lightning rods had their barbed spikes surmounting the roof of the house, and kept clear of the building. The positive ground connection of the modern antenna is more than a modified lightning rod. And in actual practice it saves much in the same way.

This year marks a progressive step toward battery elimination in radio operation. A number of radio receivers have been announced, which operate solely from the current supply of the 110 volt circuit, giving absolute reproduction without the slightest AC hum which up to the present development, has been the sole menace towards perfect reception, from current supply source.

Battery eliminators have both practical and impractical phases. Taken in the average American home, where current is available they will be no doubt the chief source of current supply before long with the greatest majority of receivers. However, on isolated places, where power cannot be had, the dry cell will always remain the necessary and practical supply of power.

The cost of operation on radio receivers with the battery eliminators is small, and taken in consideration that the voltage from the B source is always up to maximum, the results will always be the best with the very least internal noise, often caused by partially exhausted batteries. Considering the economy in power, and the reasonable price of some new types of eliminators, no doubt many fans will have these features installed in their receivers this year.

More than ever for the 1926 season the console type of receiver is coming into vogue. Beautiful cabinets of period design are housing radio receivers of 11 classes and prices. Manufacturers are incorporating speakers and reproducers in artistic shapes and designs, which are pleasing in appearance and greatly enhance the beauty of any set not having the reproducer built into the cabinet.

It is now possible for those who have bought standard high grade receivers of any type using the exposed speaker to have at a very small cost, their sets fitted into console cabinets and made to equal in appearance to many of the very latest design radio receivers announced this Fall.

DRY CELLS GIVE GREATER POWER

Increased Volume is Possible By Use of Latest of Battery Types

With the introduction of a new power tube for practically every type of dry cell and storage battery receiver, it is now possible to obtain greatly increased volume from either type set with only the addition of several more batteries and the new type of power tube. In the dry cell operated set, using the new and one half volt tube, a special adapter is necessary to accommodate the tube, which requires 135 volt plate potential as compared to regular 90 volts as is regularly used, and also the grid voltage must be about twenty-two volts for greatest efficiency. Only one tube is necessary to each set, and it is used in the second stage of audio amplification.

In some sets, such as the Super Heterodyne, this tube is supplied with power from three small additional batteries carried in the bottom of the cabinet, and the volume obtained with a set equipped with this tube will be greatly in excess of normal, and far away faint stations can be brought out clearly and strongly when used even in the second socket of the super heterodyne, with the amplifying stage cut out, using only one stage of amplification.

Large batteries operated sets will accommodate the new tube without any adapter and require the same plate and grid voltages as described in the dry cell operated sets. The volume will be amplified two or three times with the installation of this tube.

These tubes are constructed with a thorium filament, and have long life with low power consumption and operate under a very low temperature.

Mountaineers' Schools Teach Higher Studies



The famous Moonlight schools of Kentucky, organized by Mrs. Cora Wilson Stewart (above), to teach reading and writing to the mountaineers, now impart advanced education to them. The idea has spread all over the country. Mrs. Stewart has just been awarded the Pictorial Review's \$5,000 award for 1925.

KGO—361.2 METERS

General Electric Company, Oakland
Daily except Sunday:
7:15 to 7:30 a. m.—Health training exercises; Hugh Barrett Dobbs.
7:45 a. m.—"Pop class"; Hugh Barrett Dobbs.
8:15 to 8:30 a. m.—Health training exercises; Hugh Barrett Dobbs.
8:30 a. m.—"Daily strength"—Cherrio.
11:30 a. m. to 1:00 p. m.—Luncheon concert, courtesy Pacific States Electric company.
Daily except Saturday and Sunday:
1:30 p. m.—N. Y. and S. F. stock reports and weather.
7:00 p. m.—News items, baseball scores and final reading of weather and stock reports, and S. F. produce news.
Sunday, October 4
11:00 a. m.—Service of the First Baptist church, Oakland; Rev. John Snape, D.D., pastor.
3:30 p. m.—Concert by KGO Little Symphony orchestra, Carl Rhodehamel conducting; assisted by Arthur S. Garbett and guest artist.
7:15 p. m.—Service of the First Baptist church, Oakland; Rev. John Snape, D.D., pastor.

RADIO RECEIVER CABINET POPULAR

According to Earl Shepherd, who runs one of the biggest radio departments in Klamath, in connection with his music store, there is a distinct trend toward the complete radio receiver, factory built, and installed in an attractive cabinet with an efficient loud speaker or reproducer.

The craze for distance seems to be dying down, and the big demand seems to be for a natural deep, rich tone in reception, and freedom from shrieks, howls, etc., which is pretty well accomplished.

Simplicity is gaining ground rapidly, which is shown by the fact that there were ten times as many one dial sets exhibited at the San Francisco radio show as a year ago.

At the New York radio show last week, Bernays Johnson, wireless inventor, gave several demonstrations of radio power at the armory.

One stunt consisted of trying an egg on a cake of ice. The egg was placed on a frying pan on the ice and immediately became hot when the radio waves penetrated the ice.

The lighting of an incandescent light by radio power was also shown by Mr. Johnson, who stated that an entire house may be illuminated from a radio transmitter, with no wiring at all, and predicted that people will be able to carry electric lights from room to room as they used to carry candles, and as they move about, the radio beam will maintain a strong light.

Mr. Shepherd maintains that radios are as successful today as automobiles were just several years ago, and that the family which does without one under the idea that some day they will be much better are cheating themselves of a real enjoyment in life.

FINED \$20 BY JUDGE

Tom Galloway, farm hand on the George Bratton ranch in the Merrill district pulled down a \$20 fine in the police court yesterday afternoon, when Police Judge Gahagen fined him for drunkenness.

CODE REVISION URGED

WASHINGTON, Oct. 3.—A resolution urging its committee on judicial questions to draft a definite plan for codification of international law, was adopted unanimously today by the inter-parliamentary union, in session here.

TOO LATE TO CLASSIFY

FOR RENT—Three room furnished apartment with garage, \$35. Inquire 212 Michigan. O4*

FOR SALE—4 room modern house, completely furnished, garage, store-room, lawn, trees, woodshed full of wood. Phone 295-J. O4-7*

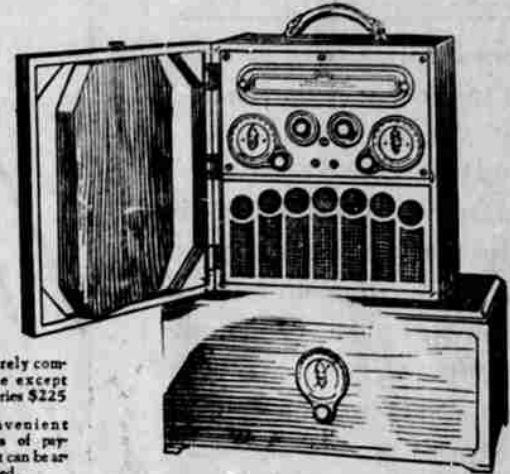
MASONS, ATTENTION!

Work in F. C. degree, Monday nights, 7 o'clock on.

C. E. DENNIS, W. M.

Ask The News About the Radio Programs

Radiola Super-Heterodyne



Entirely complete except batteries \$225
Convenient terms of payment can be arranged.

For Outdoors—just the upper half, with small batteries tucked inside.
For Indoors—the extra cabinet for smarter appearance—and larger batteries. Provision for antenna, if desired.

Convertible to any purpose

Finely finished in walnut—yet sturdily compact for out-of-doors. It is the famous Radiola Super-Heterodyne with a built-in loud-speaker—nothing more than that need be said for its performance and its tone quality! City or country—aboard ship or on land—it works everywhere. Just turn the dials and tune in!

Radio Headquarters
BALDWIN HARDWARE CO.
418 Main. Phone 261

WJZ--KOA--KPO

They're all the same to the
PRESTODYNE
The 5 tube wonder set

Let us make a demonstration. You'll marvel at the efficiency of this remarkable set.

Wirtz Music House

Phone 125 122 So. 6th St.



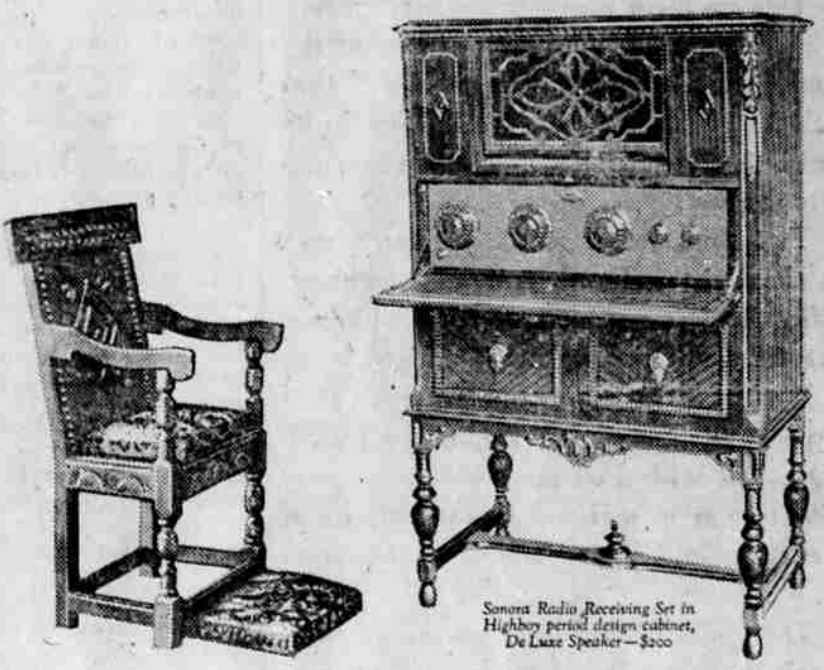
FREE!

A BEAUTIFUL FIVE TUBE REPUBLIC RADIO. HERE'S HOW:

With each 50c purchase we will give the customer a card showing one of the eight letters that spell the word Republic. Save these cards. To the first customer spelling the word Republic in any one color cards we will give this beautiful five tube Republic Radio.

H. J. WINTERS

Jeweler and Optometrist—Phonographs—Radio
714 Main Street Klamath Falls, Ore.



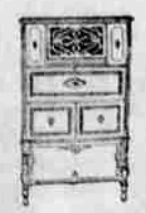
Sonora Radio Receiving Set in Highboy period design cabinet, De Luxe Speaker—\$200

Now in Radio—Sonora's Rich, Mellow Tone and Cabinet Artistry

THROUGH the new Sonora receiving set, radio music is realistically reproduced with that rich, mellow tone enjoyed heretofore only through the Sonora Phonograph. For three years, Sonora's renowned radio engineers worked to build this set that gives true Sonora tone quality.

You'll marvel at the way it brings in distance and its unusually high selectivity. The carved Renaissance period design Highboy cabinet conceals all batteries and wiring, revealing only that the owner has a keen appreciation of artistic beauty.

In the Sonora Highboy radio is the famous Sonora tone chamber—made of many layers of wood, seasoned wood is fitted cross-grained to each other, thereby eliminating all harsh overtones.



EARL SHEPHERD CO.

Phone 282 507 Main St.

RADIO FANS

An interesting announcement will be made soon.

WATCH THE PAPER

UHLIG'S ELECTRIC STORE

Phone 234 1026 Main St.