

# OVERLAND COST ONLY 40 CENTS DAILY OPERATING

for each occupant, assuming that the car carries its full passenger capacity on the majority of its trips.

"The average buyer rarely ever goes into figures of this sort in his consideration of a car, and yet, from the viewpoint of good business, they are the very figures he should base his purchase on.

"And good business houses reduce their overhead figures down to terms of this nature. Each move an employee makes, represents a certain definite cost to the house. The lower this cost, the greater the chance of real profit.

"In the average home, the lower the cost of transportation, the greater amount of money left available for other purposes.

"The decided factor in the low cost of owning an Overland is the sturdiness of the car. Molybdenum steel, generous size frame, Chromovanadium in the springs and other specifications of this nature give it a strength far in excess of that usually expected in a light car. This strength reduced repair charges to such a low point that there are many cases where Overland owners have used their cars for three or four years with no expense for repairs by wear or breakage in the car itself.

"Clutch construction, the sturdiness of the motor supports, and other elements of the general design of the car, all play a very important part in the low average daily cost of ownership."

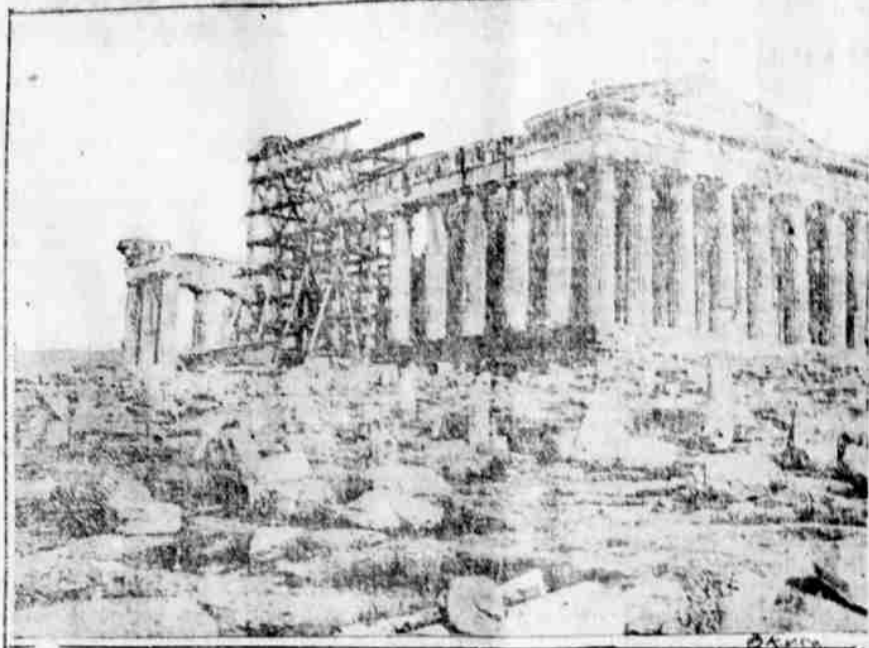
"Basing our figures on the new price of the Overland standard sedan, and our estimates of service on the records of thousands of owners, we can set the average daily cost of ownership of an Overland standard sedan at around 40c per day," says Joe Brett, of the Willys-Knight Sales company, local Overland dealers.

"This does not take into consideration the average costs for fuel, oil, tires and similar items, but it does cover the cost of keeping the car in first class condition, ready for any kind of a trip at any time.

"And for this amazingly small amount of money, transportation is always available for five adults in an enclosed car that incorporates every advanced feature of construction in its general make-up.

"Ten thousand car miles a year is a low average for the service expected of a car of this type in this part of the country and this means that the car costs but little over a cent a mile to own or somewhere around one-fifth of a cent a mile

## Americans Dig Up Treasures of Ancient Greece



● Greatest art treasures of ancient times, relics of the first civilization of the west, that flourished in Athens in the golden days of Plato, Pericles and Demosthenes, will yield to the picks and shovels of American archeologists soon. The Greek government has given permission to a Yankee expedition to excavate the sight of the ancient city. Some of the ruins are seen being dismantled.

### Odd Fellows And Rebekahs Pour To Portland Conclave

PORTLAND, Sept. 19.—While thousands of Odd Fellows and Rebekahs poured into the city from the east today for the annual convention of the I. O. O. F. lodge, hundreds of others were at Seaside enjoying themselves at the beach.

Early arrivals were given an opportunity to take the trip to the seashore for a clam bake, while others toured the scenic Columbia River highway and visited other points of interest.

Official ceremonies of the lodge will begin Monday and the convention will reach a climax with a spectacular parade later in the week.

The wheels can be removed and carried inside a French inventor's wheeled marketing basket when desired, and it can be carried by a top handle.

### Legal Notices

NOTICE FOR PUBLICATION

Department of the Interior, U. S. Land Office at Lewiston, Idaho, September 9, 1925. Notice is hereby given that Frank F. Mullax, of Dorris, California, who, on November 1, 1923, was Additional Homestead Entry No. 612194, for W. 1/4 NW 1/4 of Section 23, Township 48N, Range 2E, Willamette Meridian, has filed Year Proof, to establish title to the land above described, under the Act of March 3, 1909, Chapter 109, Section 2202, U. S. Statutes at Large, 36 Stat. 1033. Claimant names as witnesses Jesse L. Rich, David Smith, William Raymond, Al Cannon, Al Dorris, California.

F. F. LUTZ, Register. \$12—012 Inc. KLAMATH VALLEY HOSPITAL. Money can secure no better confinement.

Phone Johnny-on-the-Spot for Lumber—128



Building up character is a good job for a man or a firm. By supplying our patrons with first class lumber and high grade service we have built a business structure of which we are proud.

## Lakeside Lumber Co.

### COLD WEATHER COMING

"Let Your Glass Troubles Be Ours." All kinds of glass—For all purposes. Estimates gladly furnished for Sash, Doors, Frames and Cabinet Work.

### THE GLASS HOUSE

11th and Pine. Phone 477-W

### Headquarters for Time and Labor Saving McCormick-Deering POTATO MACHINERY

Where a considerable acreage of potatoes is grown a McCormick-Deering two or four-horse potato digger soon pays for itself in the time and labor saved... These diggers are well-built, correctly designed machines that will dig under all workable conditions, and stand up to work in the hardest soil.

Made in six-foot size for two horses, and seven-foot for four horses. The six-foot can be furnished with a rod link elevator, or with bar grate or "riddle" elevator... The seven-foot digger has a rod link elevator.

The rear shaker thoroughly separates the potatoes from the dirt, and the vine turners cause the vines and weeds to be thrown to the side, leaving the potatoes in a neat, clean row behind the digger.

A McCormick-Deering digger means less power required, less labor, and better potatoes. Make ready for digging time by arranging with us now for delivery of a digger later.

Remember: We can furnish both diggers and planters of McCormick-Deering Quality.

'Good Equipment Makes a Good Farmer Better'

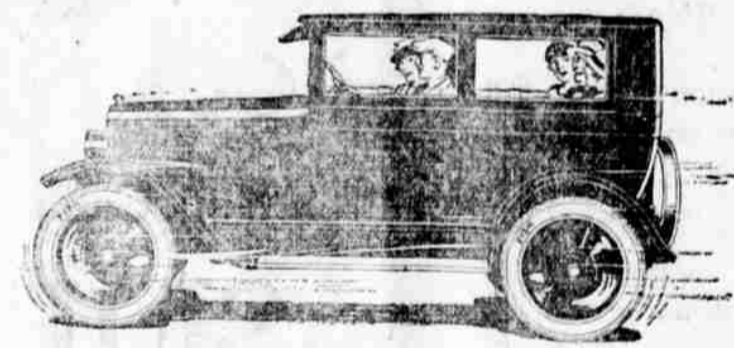


## J. S. Mills & Son

Sixth and Klamath Headquarters for the McCormick-Deering Line

# "no car built will do what this car does for \$595!"

John G. Willys  
President, Willys-Overland, Inc.



Ultra-light 5-passenger Standard Sedan \$595 I. e. b. Toledo

... the Commander-in-Chief of one of the three biggest builders in the world of first-quality automobiles is responsible for that statement. Certainly no one knows better what is back of this extraordinary car-of-tomorrow value. Certainly no one knows better what man-power, and money-power, and big purchasing-and-producing-power have been put into the building of it!

A better car for less money. That is the net of it. Big-car quality. Big-car appearance. Big-car service. And, at less-than-current light-car cost, many new features, many new refinements added!

But let this car speak for itself. These are the facts. In this master-product of Overland you find the answer to what your money-of-today can buy in car-of-tomorrow value.

... A FULL-SIZE 5-PASSENGER SEDAN, with plenty of room for 5 full-grown people to ride in—for the first time in motor car history, a car of this size, with sliding gear transmission, for less than \$600!

... A smart-appearing car, clean-cut, rakish, low, with the elegant lines of a yacht, very swagger-looking! ... polished lacquer finish, rich deep blue, with gleaming black trimmings—as inviting an opportunity of automobile as you would want to look at. Women want it the minute they see it!

... extra big doors, extra wide, easy entrance and exit to both front and rear seats. Like getting in and out of a limousine. No inconvenience, no discomfort. Each door has four extra heavy hinges—treat them as rough as you like, these doors are built to stand punishment!

Wider seats—the widest of any light car built! New single-piece, undivided front seat, 39 inches wide, 19 inches deep. All the elbow-room you want. You know what that means to your driving comfort-and-freedom. No more 100-mile fatigues! Wider back seat—45 inches wide, 18 inches deep. You know what such ample seating capacity means to the comfort and pleasure of your passengers.

Very latest one-piece windshield—very valuable in night-driving. Gives clear, unob-

structed vision. No neck craning. Sit sensibly back of the wheel and you can always see where you're going. More easily adjusted—you don't have to fuss with it. Adds greatly to the car's appearance. Easier to clean and to keep clean. You need this new-day light-car feature and, in this extraordinary car-value, you get it!

Big wide windows—more than 20 square feet of window space—all the air and all the broad, uninterrupted vision of a touring car with closed-car protection, closed-car snugness, closed-car warmth and comfort whenever you want it!

... A 27-horse-power engine, sturdy, fast, reliable, a noble bill-chamber. A quieter engine because it has fewer working parts. 20-to-25 miles to the gallon of gas, often more—light on oil—hundreds of Overland owners report as high as 15,000 miles without a dollar spent for engine up-keep!

Three speed, selective, sliding gear transmission—at the lowest price ever available in a sedan! Borg and Beck disc type clutch—one of the finest clutches made and used in many of the highest priced

cars in this country: Auto-Lite starting, lighting and ignition—again, standard big-car equipment; a rear axle system the equal in size and weight to that used in cars carrying double the weight of this one; Axle shafts of Molybdenum steel, the toughest steel known. In the entire three years in which Overland has used this axle system there is no case on record where an axle has ever been broken.

Chassis, a strong, rigid frame with plenty of bracing; springs of Chrome Vanadium steel, the finest and strongest spring steel known to engineering.

To understand what you're getting in this great light car, at this heretofore unheard-of price, you've got to step in and see it. You've got to compare it, point for point, with other cars you may be considering. Then, and then, only can you form any fair estimate of its outstanding value for so little money.

Easy terms. Only a small amount down. 18 months for the balance. Apply your present car as your down payment and drive this new car home!

# Standard OVERLAND Sedan

## Overland-Knight Sales Co.

Phone 899

4th and Klamath