

**Local Briefs**

**Man Here**—M. Peterson, lumberman of Lakeview, returned to Klamath Falls for a visit after spending the week in the neighboring city.

**from Portland**—Interested in the American Automobile Association which has named Klamath Falls as the next branch of the Oregon Motor Association, C. McHenry has returned from Portland, where he conferred with the organization.

**from Uly**—Mr. and Mrs. Ford, well known ranchers in Uly county, are spending the week in Klamath Falls with friends in the city and attending to business affairs.

**Hall Hotel**—Wilson Wiley, of Wilson Wiley, Klamath Falls, is stopping in the Hall Hotel, the absence of his wife is making an extended visit to Sacramento.

**from Beatty**—Mrs. Elsie of Beatty, where she has spent the past few years, interested in the city store, is spending the week in Klamath Falls, arriving last night.

**for Susanville**—Mr. and Mrs. H. Thompson, well known in Klamath Falls, spent last night in Susanville enroute to Susanville where they will spend the week.

**the South Last Night**—H. H. Moore of Oakland, who is in Klamath Falls for several days, will leave today for New York where he will spend the week.

**Business Visit**—Max J. Kuey, of Pass, who is affiliated with the highway department, is on a brief business visit to Klamath Falls this week-end.

**Place of Barnes**—In the person of Abe Barnes, night clerk at the White Pelican hotel, who is the latter part of the week to go deer hunting, Paul Shasta Springs is located in the White Pelican hotel.

**at the White Pelican**—Rourke, Laura N. Rourke, and Ora F. Black are in a party of Crescent Falls enjoying a brief visit to Klamath Falls while planning a winter Lake. White in the guests in the White Pelican hotel.

**Business Here**—Robert C. and W. H. Pippy, both of Medford, are among the week-end in Klamath Falls from the valley to business affairs.

**Visitors**—J. S. Ragone, known resident of Bonanza, is on a brief time in the city to attend to business affairs.

**Montague**—Miss Vestina of Montague is spending the week in Klamath Falls with friends and shopping home in northern California.

**Business in Klamath**—Jack who makes frequent business to Klamath Falls, is some time here the week from his home in Shasta.

**Visitor in**—Mrs. A. L. of Dairy is visiting in Klamath Falls this week-end to shop and attend to business affairs.

**ArCADE Hotel**—Antonio of Lakeview and E. G. also of Lakeview are in the Arcade hotel this week while making a brief visit to Klamath Falls.

**River Visitor**—W. C. of Sprague River, superior of the Sprague River Lumber Company is making a business visit to Klamath Falls for the week interested in the affairs for the coming week to Mattson affairs lumber game are putting the week-end aspect.

**From Lakeview**—Mr. and Mrs. Barry and William Ben Lane, all residents of Lakeview, have arrived in Klamath Falls to spend the remainder of the city visiting and attending to business.

**From Albany**—Mr. and Mrs. Hall and Myrtle Dixon, Albany, have enjoyed a visit to Klamath Falls, from their home in Albany. The party will visit to Crater lake while in Klamath Falls.

**The Fort**—Mr. and Mrs. of Fort Klamath are in the city, to call on friends.

**Nevada**—Among the visitors from the state to visit for some time is G. A. party from Austin, Nev.

October Delineator and late fall Butterick Fashion Plates are in, and the new Butterick Patterns with Better Guide. Good fiction and home decoration ideas in Delineator

Mother, wife, daughters, sweethearts, are your men folks well dressed economically?

You women folks should insist on the men having an equal pride in appearance.

**Fashions In MensClothes**

Style changes for fall have radical differences from last spring. The most noticeable difference is a shaping of clothes to adhere closer to lines of the body. Tweed, for suits, except real Scotch ones, is not called for except in sport fraternity circles.

**Coats**—Modelling of coat lines for the most part is along the wedge-shaped line to a trimness and neatness to meet the lines of the ample top trousers. Coats will have fairly broad lapels, fairly short length and waist effect. Three-button models, with two buttoning, form the bulk of style.

**Trousers**—To conform to the body line styling, trousers the coming fall and winter are being cut narrower than the past season's separate pants style fashion. American accents are to novelties, but not to freakish appearance as some European firms had advanced—bottoms wide enough to sweep the streets and never neat. Narrower trousers means the drape of the trousers is much neater than before, and will always be capable of holding a crease.

**Colors**—In fall and winter fabrics colors have a decided tendency to return to darker shades of new blended tones. Not meaning blacking and real dark colors, but a return to normal variety of shades from the bleached tones of the past summer.



**The American Accent**

in MEN'S AUTUMN CLOTHES

**\$18 to \$35**

**Full of Action, Life and Color For WELL DRESSED MEN**

Who Have Pride In Appearance

Featuring **\$32.50** Suits with **2-Pair** Pants — **Sport Shirts For Men \$6.95---\$7.85**

- Cassimeres
- Serges
- Worsteds
- Cheviots

**Bluestone Grey 2 Button Sack \$32.50**

One of the bright spots in the men's clothing spectacle is this suit of bluestone grey wool with large modest blue overplaid check in two-button sack coat in the favored lapel; an extra pair of trousers adds to the value of this fine suit at \$32.50. Others in lighter shade.

**Young Men's Double Breasted \$20.00**

Novelty brown, heavy, soft finish wool suit; two-button double breasted coat, deep notched popular long, wide lapel, for the high school youth who wants snap and action, with trousers in the medium bottom now being cut by all American suitmakers. Ages 15 to 18 at \$20—others at \$18.

**Bluesteel Grey 2 Button Sack \$25.00**

This suit is made of a dark blue wool cloth in a practically solid color, with the very faintest stripe suggesting an overplaid, so acceptable to those favoring the more novelty weaves and patterns. In the neat two-button sack style with two pairs of trousers.

**Extra Sizes For Big Men \$35.00**

Included in this display of fall clothing for men are extra sizes for the big men, those who require sizes from chest measure of 44 to 48 inches. In these are some hard finish wools which are much preferred by these men and in dark colors and conservative styles.

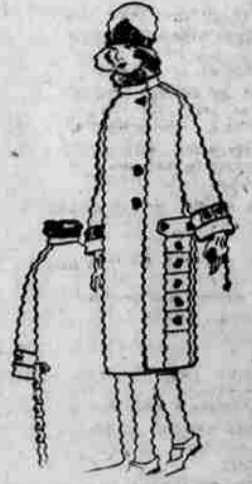
This initial showing of fall and winter suits meets the expectations of all those who are wanting new suits of new fall shades, fabrics and styles. Shades include brown checks, overplaid suggestions, blue, grey and brown serges, some with stripes, and novelty mixtures. Trousers mostly are the reversion to the medium bottom leg favored by American suit designers for neat appearance and good taste. You'll find the Golden Rule Corporation name, assuring style-at-a-price, quality apparent and economy—on the inside pocket of each coat. Prices range \$18.00, \$20.00, \$25.00, \$27.50, \$29.50, \$32.50, \$35.00, \$37.50.



And Chilcoquin

New "Mellowfit" Hats, new Hose, new Shirts, new Shoes, new Underwear to completely clothe the men who must have good clothes, correct style, at a price for long service.

**COATS For Misses and Growing Girls \$5.50—\$19.50**



"Sterling" coat No. 8776, 14 year size—\$14.50

Lovely and beautifully luxurious fall and winter dress coats for young ladies and younger girls—coats made in fabrics and styles as exact in fashion as for their elders, and as delightfully trimmed. Sizes 6 to 16 years, \$5.50 to \$19.50.

**Rayon Crepe Dress Patterns \$4.50**

Novelty autumn rayon crepe dress patterns, 54-inch width, one and three-quarters yards to pattern, in blue, tan and orange, with border stripe effects. Only one dress to each pattern motif. \$4.50 pattern.

**Balgrigian Dress Suiting \$2.95**

Lovely knit dress goods in fall weight and shades, for dresses, sport dresses and suits; brown, green and blue mixture tones. Width 54 inches, \$2.95 yard.

**New Tweeds In Heathers \$2.95**

Novelty fall weight tweeds in mixt tan and mixt grey heathers, 54 inches wide; delightfully useable for smart tailored modes and travel and street wear. Width 54 inches, \$2.95 yard.

**New Woolen Dress Goods \$5.85 to \$11.85**

Novelty and plain fall woolen dress patterns in stripes, bordered effects and overplaid suggestions in exclusive designs. For the fall and winter season's smartest dresses. Width 54 inches, \$5.85 to \$11.85 the yard. Wool and cotton mixture crepes, 36-inch width, stripes and checks of satin stripe. \$10.00 and \$11.00 the yard.

**New Art Silks Beatrice Krinkle \$1.50**

Charmingly different, with fine, lustrous sheen, Beatrice Krinkle Art Silks, 48 inches wide, with shirred pleating effects, useable for bed spreads, upholstery and drapes. Width 48 inches, in luxurious colors of rose, lavender, blue and old gold. \$1.50 the yard.