

## CALIF. PICKS UP KLAMATH'S IDEA

Another section of the coast has picked up the idea fostered by the Klamath county chamber of commerce in the Stop Forest Fires campaign, according to a communication received by Lynn P. Sabin, secretary of the chamber, yesterday afternoon.

California is now adopting the campaign work, and has set a period of the campaign for July 1 to July 15, inclusive, according to a letter received from S. R. Black, secretary of the California Forest Protective association, who was here in the city several weeks ago, conferring with Jack Kimball, head of the Klamath association.

Each chamber of commerce in California is to appoint a campaign committee, announce the communication, and members of the press are included in the group. Pledges are to be signed, and to the boy or girl in California, obtaining the greatest number of pledges, a prize of \$25 is offered.

The campaign is endorsed by the United States forest service, state board of forestry, California Cattle association and the California Wool Growers' association.

## Klamath's New High School Principal Is Here Making Ready

Paul T. Jackson, principal for the coming year of Klamath county high school, arrived in Klamath Falls Saturday morning at 11:30 a. m. to begin the outlining and work for the coming school year. He was accompanied by Mrs. Jackson.

Mr. Jackson served as vice-principal in the Olympia high school, in Olympia, Wash., last year, a school whose attendance passed the 800 mark. Many of the interesting features of the work done in the larger school will be incorporated in Klamath county high school, and several new features for the institution will be inaugurated during the coming year.

According to Mr. Jackson, the trip to Klamath Falls was made this early in the school year in order to make conditions thoroughly familiar and between the course of 10 a. m. and 3 p. m. the principal's office in the high school will be open in order to receive all students who wish assistance with the outlining of their schedules or the re-arranging of the high school course.

Mrs. Jackson will not teach this year, although she was head of the home economics department of the Olympia school last year. A number of teachers are being negotiated with for the occupancy of vacancies in the faculty of Klamath county high school, and the school year of 1925-26 is expected to be the most complete of any during the past history. Dwight French, university of Oregon football letterman, who has accepted the position as athletic coach, will arrive in the near future to take up active work

## Omaha Suffers From Supper-Hour Tornado



Omaha, Neb., was just sitting down to supper when a tornado swept through a section of the town, wrecking homes and trapping the occupants. Seven persons were injured in the houses shown here, and a score of others hurt in nearby residences.

ath county high school, and several new features for the institution will be inaugurated during the coming year.

According to Mr. Jackson, the trip to Klamath Falls was made this early in the school year in order to make conditions thoroughly familiar and between the course of 10 a. m. and 3 p. m. the principal's office in the high school will be open in order to receive all students who wish assistance with the outlining of their schedules or the re-arranging of the high school course.

Mrs. Jackson will not teach this year, although she was head of the home economics department of the Olympia school last year.

A number of teachers are being negotiated with for the occupancy of vacancies in the faculty of Klamath county high school, and the school year of 1925-26 is expected to be the most complete of any during the past history. Dwight French, university of Oregon football letterman, who has accepted the position as athletic coach, will arrive in the near future to take up active work

In the outlining of athletic curriculum.

According to Mr. Jackson, registration will probably be required a week before the opening of school by resident students in order to outline the work with as little friction as possible.

### WOMEN NOW PERMITTED TO SMOKE ON N. P. TRAINS

OAKLAND, June 13.—The spectacle of fair stenogs puffing gaily at cigarettes may soon be common in rush hours on trains which carry commuters to work in San Francisco.

Officials of the two leading local transport companies have announced that in lieu of separate smoking compartments for women tobacco

users, the sections used by men will be made available for women smokers.

### GOVERNOR PIERCE ISSUES FOREST FIRE PROCLAMATION

SALEM, June 13.—A proclamation was issued today by Governor Pierce, calling the attention of the public to the great need for protection of Oregon forests from fires. He set aside the week of June 29 to July 4 as a time for making a concerted effort for increasing the membership in the "Stop Forest Fires association."

In another proclamation he called on the citizens to participate in the observance of national defense test day, July fourth.

# HECTOR'S

## The Fashion Center

The smoke, resulting from our recent fire, damaged a small percentage of our stock, for which the insurance company has allowed us a reasonable adjustment. We have made a thorough inspection of the stock, and never merchandise was affected by the smoke, and goods exposed, however slightly, to damage, we have decided to offer the public at BARGAIN PRICES, listing only a few of the many items reduced.

## Sale Opens Tomorrow at 9 a. m.

### Millinery

Our entire stock of millinery reduced in price. Hats that were marked to sell from \$5 to \$15 now selling from—

**\$2.95 to \$6.95**

### Hats

Special lot of hats. We bought for a special \$5 seller—

**Now \$2.95**

### Princess Slips

Satinett Princess slips. Peach and orchid, you can use a few at these low prices—

**98c each**

### Cotton Crepe Bloomers

Cotton crepe bloomers. Flesh colored only. A sure bargain—

**48c each**

### Black Sateen Bloomers

Children's black sateen bloomers. Good quality sateen and well made—

**48c each**

### Percales

36 in. percales, medium, light and dark colors—

**14c yard**

### Novelty Dresses

All silk, voile, linen and novelty dresses are decided bargains, now—

### Sport Dresses

Silk Sport dresses in crepe and fancy prints—

**\$8.40**

### Linen Dresses

All linen dresses, in various colors to \$15—

**\$3.95**

### Gingham Dresses

One lot of Gingham dresses in checks of medium and bright colors—

**\$1.98**

### Silk Sweaters

Rayon silk sweaters, style in gay bright colors—

**\$1.65**

### Coats

Our entire stock of coats, including the popular Wales type—

**\$8.90 to \$11.95**

### Neckwear

All neckwear bargain. Our entire stock of neckwear will be offered for—

**1/2 Price**

### Cotton Crepe Gowns

Fancy cotton crepe gowns, colors or orchid and peach—

**98c each**

### Dress Gingham

32 in. dress gingham, plaids and checks, all patterns to select from—

**16c yard**

### Crepe

Everfast Crepe, 36 in. desirable street shades—

**48c yard**

### Dress Linen

Everfast dress linen. The you can buy, about 6-8 colors to choose from—

**89c yard**

### French Flannel

Wool French flannel, in popular shades now in demand—

**98c yard**

### Belfast Suitings

Colors pink and blue, wide—

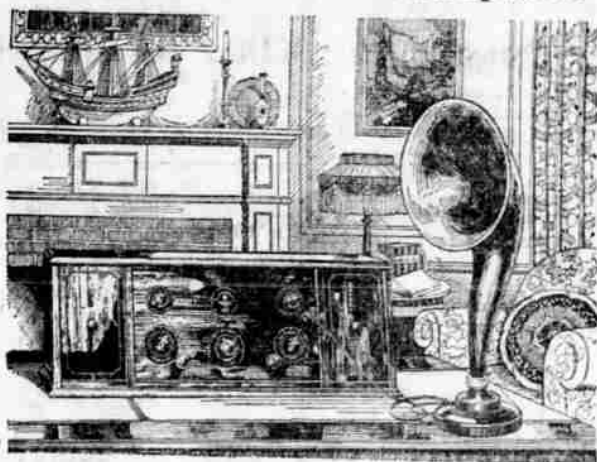
**18c yard**

### Ratine Suitings

Three colors to select from, 36 in. wide—

**24c yard**

## \$120 With Tubes and Loud Speaker



### Latest in Radio

The above shows one of the latest and most satisfactory Radiolas—the Regenoflex.

Among others in our varied stock will be found the Superheterodyne in the Super Eight and Portable, the Grebe, the Ware Neutrodyne, Freshman Masterpiece, One Dial Magnavox and Radiolas as low as \$35.00.

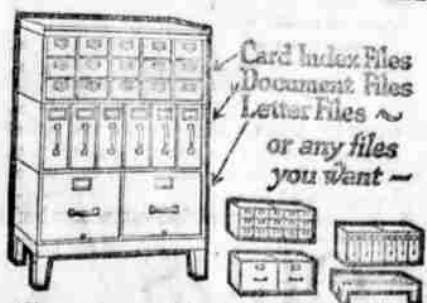
Where else can you find so representative a line? Convenient terms.

### EARL SHEPHERD CO.

Radios, Batteries, Supplies.  
507 Main St. Phone 282

## Globe-Wernicke

Steel Filing Cabinet Sections



Southwell Stationery Co.

626 1/2 Main St. Phone 602

Globe-Wernicke AGENCY.

## Klamath Falls, Westwood, Susanville Stage Line

Geo. A. Scott, Owner.

Starting Thursday, May 21st, 1925

Leaving Klamath Falls

Tuesday, Thursday and Saturday, 7:30 A. M.

Arriving at Klamath Falls

Monday, Wednesday and Friday, 6:00 P. M.

Leaving Susanville

Monday, Wednesday and Friday, 7:30 A. M.

Arriving at Susanville

Tuesday, Thursday and Saturday, 6:00 P. M.

Making through trip in one day.

Connecting at Klamath Falls for Ashland, Medford, Portland, Bend, and points north. Connecting at Susanville for Reno, and points east and south, also Fruit Growers camps.

New comfortable stages will be used on this line.

Best of Service Guaranteed.