

# Bonanza Area Proud Of Youth Activities

BOVANZA—Among the activities and progress during the past year has been the accent on youth and youth accomplishments in the Bonanza area.

Edwin "Eddie" Ferlund of Langell Valley won sixth place in a national welding competition sponsored by the James F. Lincoln Arc Welding Foundation of Cleveland, Ohio.

Ferlund, a Bonanza High School graduate, designed and constructed a cattle feeder under the guidance of John Lundberg, industrial arts instructor at the high school, as his entry in the competition. For his achievement, Ferlund was awarded \$55.

**Essay Winner**

Shirley Bechold, a 16-year-old Bonanza High School senior, was announced this last September as the winner of the Bonanza Town Council's Inform the Nation contest and was awarded \$10 for her efforts.

The contest was originated to collect data and accurate facts concerning the town of Bonanza in an effort to answer the constant flow of letters requesting information about the community.

Shirley will have the privilege of having her essay printed and sent to the many inquirers across the nation.

Linda McFall, another Bonanza High School senior, was one of the princesses of the 1964 Klamath Basin Potato Festival held in Merrill during October.

**Who's Who**

John Lundberg, industrial arts instructor at Bonanza High School, received the highest honor conferred by his profession when his name was catalogued in August in the "Who's Who Among Young Men of America."

The honor was accorded him by Epistol Pi Tau, an international fraternal movement of the industrial arts profession for high scholastic achievement.

Judi Randall, daughter of Mr. and Mrs. Louis Randall and a senior at Bonanza High School, was selected as one of 39 teenagers sponsored by state Rebekah and Odd Fellow lodges to participate in the "United Nations Youth Pilgrimage."

In a trip encompassing July 15 through Aug. 10, the teenagers toured Washington, D.C., New York and the United Nations, plus spending one day at the World's Fair.

**FAIR OUTPOST**

The farthest outpost of education in Klamath County is Gilchrist. The town boasts both elementary and high school education, serving the far northern portion of the county. The school includes apartments for teachers.



**TWICE VANDALIZED** — The Lost River Cemetery at Merrill, one of the oldest in Klamath County, which vandals heavily damaged twice, has been restored with donated help and cash from descendants of persons buried there for many years. Max Hartlerode, chairman of a restoration committee, stands between two headstones that had been tipped over.

# Potato Festival Highlights 1964 Activities In Merrill

MERRILL—The horror of vandalism in the Lost River Cemetery in the early part of 1964 was the leading news for the residents of Merrill and then, October ushered in the 28th annual Klamath Basin Potato Festival, marking it as one of the best held.

No grave was spared in old Lost River pioneer cemetery when vandals, still unknown, struck. Newly repaired fences removed the thought from investigating authorities that the damage could have been done by cattle, and also since many family plots, enclosed in high iron fencing, were heavily damaged. Just previous to the attack on the cemetery, farmers and private citizens had worked to restore the grave sites and to repair damaged gravestones, but the work had been in vain. Damage estimates were "around \$1,000."

**District Formed**

As an upshot of the vandals' huge amount of malicious damage, and from past damage, voters of the Merrill district went to the polls on July 14 of last year to ballot on a proposal to form a cemetery district which would incorporate both the early Lost River Cemetery and the Odd Fellows Cemetery. Needless to say, the voting was affirmative providing a full-time caretaker to handle maintenance of both cemeteries.

**Championship Won**

Junior varsity cheer leaders of Merrill High School, Karen Chapman, Nancy Merriess and Marlene Moore, won the small squad grand championship during a June 28 to July 2 Squaw Valley cheerleaders' clinic held in Squaw Valley.

**Festival Success**

Six young ladies from high schools of areas surrounding the community of Merrill competed for the title of queen of the 28th annual Klamath Basin Potato Festival held in Merrill on Oct. 23 and 24. Coronation ceremonies at the Potato Festival Banquet on Oct. 23 saw Loudean Lyon of Main High School crowned with Candy Kamira of Merrill, Linda McFall of Bonanza, Helen Penster of Tulelake, Linda Nelson of Chiloquin and Alice Horeley of Henty reigning as her princesses. Secretary of State Howell Appleby Jr., was the speaker at the banquet.

**Harvest Flower Show, exhibits**

of home grown foods, potatoes, fruits, canned foods and grain, plus junior divisions all with cash prizes for all categories.

J. Leland Pope was marshal for the Festival Parade held Saturday, Oct. 24, with an estimated crowd of 4,000 on hand to see the long line march through Merrill. The parade was followed by a free barbecue for the public with 2,500 reported as being served.

**Proceeds of over \$1,700 were collected by the Chiloquin Chamber of Commerce:** from the tournament and was given to the Klamath Indian Memorial Museum to further the preservation of Indian artifacts.

The 1965 World Champion All-Indian Basketball Tournament was begun this year with the Elimination Tourney held on Feb. 17, 18, and 19. The main tournament is scheduled for March 25, 26 and 27.

# Cemetery Scene Of Rehabilitation Work

MERRILL — The Lost River Cemetery in Merrill, twice vandalized in one year, has been restored and fenced through the efforts of families who have relatives buried in early day plots when the town of Merrill was young.

Some unknown persons overturned head stones, broke many, including those with protective iron fences. Weeds had grown and the barbed wire and net fences had fallen into disrepair. Cattle had roamed over the graves.

Today extensive rehabilitation work has been completed under the guidance of Max Hartlerode of Merrill, who heads a cemetery committee.

Donations of cash and work offers poured in after newspaper reports indicated the damage done.

The cemetery lies on the banks of Lost River in the rear of St. Augustine Catholic Church.

Those assisting with the restoration program were Vic Shuck, Claude Shuck, Vernon Shuck, and Otis Muno.

The Lost River Cemetery, established in 1889, is on ground donated by pioneer Nathan Merrill for whom the town is named.

Lost River Cemetery and the Odd Fellows Cemetery were incorporated under one district in recent months by vote of taxpayers in the areas involved.

# Serving the Merrill Area for Over 30 Years!

**Dorris Builds Sewer System**

**Custom Slaughtering Cutting and Wrapping!**

**DORRIS**—A total of \$107,125 was spent during 1964 in Dorris on new home and building construction, this figure includes home and business remodeling.

Business licenses issued in the city proper amounted to a total of \$1,210.

The Sanitary Collection and Sewage Disposal System of Dorris was completed during the latter part of the year. The sewer system cost was \$224,500, of which amount, \$92,500 was given the city in federal grants through the agencies of the Department of Health, Education and Welfare and the Housing and Home Financing Agency as a part of both federal agencies' accelerated public work program.

The rest of the systems' mortgage was obtained through the sale of bonds completed in 1963 as the city's portion of the sewer system and sewer connection fees money.

On the main Pacific Flyway, the Klamath Basin is a principal stopover for some four million ducks and geese each year.



**MERRILL MEAT CO.**  
Klamath Highway, Merrill, Oregon 798-5924

# KLAMATH FALLS BUILDS WITH BUTLER!



**PLY LOGGING CO.** **NOR-CAL PRODUCTS, INC.**



**VALLEY PUMP & EQUIPMENT CO.**

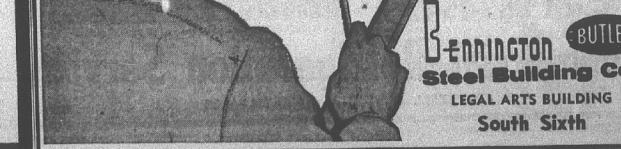


**RANCH WHOLESALE SUPPLY**

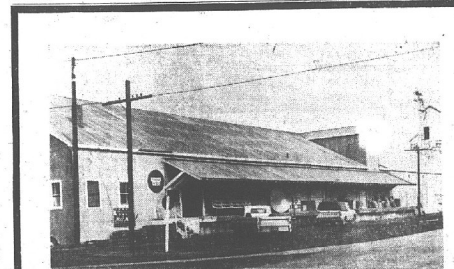
# are you... PLANNING A BUILDING FOR BUSINESS? then... SEE YOUR BUTLER BUILDER!

One call does it all! Bennington Steel — Your Butler Builder — handles the entire job. Costly planning time is minimized (and construction time drastically reduced, too!) with the Butler Building System, America's highly pre-engineered building form.

We take the worry out of your hands — delivering a complete package. Just tell us what your building needs are... we plan and build it to suit your requirements. It's easy (and economical) the Butler Building Way.



**BENNINGTON BUTLER Steel Building Co.**  
LEGAL ARTS BUILDING South Sixth



# Offering New & Expanded Lines to Farmers & Ranchers...

- ★ Complete Line Mt. Shasta Feeds
- ★ Wide Selection Ranch Supplies
- ★ Animal Health Supplies & Equipment
- ★ Fertilizers & Farm Chemicals
- ★ Grain, Pasture & Alfalfa Seeds

**SEED CLEANING!**

Grain Buyers & Bonded Grain Storage.

**Mt. Shasta Milling Co.**  
Merrill, Ore. Ph. 798-5811

# ARROW FUEL CO.

350 Spring St. — Klamath Falls, Ore.



**Shell Heating Oil Distributor**  
Immediate Fuel-Oil Delivery from our Radio-Dispatched Trucks — Day or Night  
PHONE 884-6661