

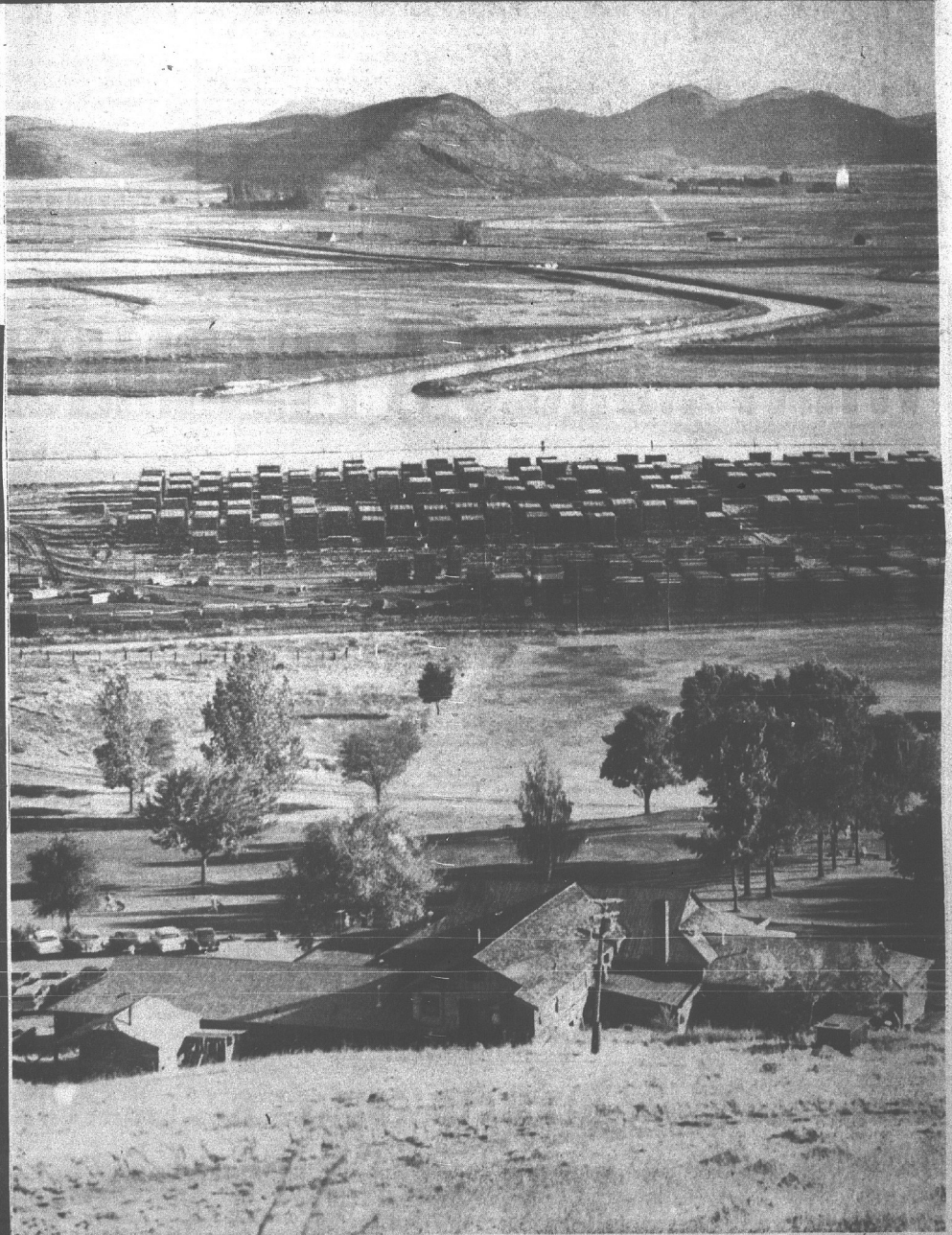
KLAMATH FALLS, OREGON

Herald and News

FEBRUARY 26, 1965

Community Basin Areas To Build Progress

CAVALCADE of PROGRESS



Important economic factors of the Klamath Basin are included in this view taken from the high hill adjacent to the clubhouse at Reames. This view shows stacks of lumber in the immediate foreground, and the Lost River Diversion Channel that diverts water from the Klamath River past the Miller Hill, visible in background and on into Lost River. The econ-

omy of the Klamath Basin is built on lumbering, agriculture and such recent additions as the military forces at Kingsley Field and Keno, and the budding new campus of Oregon Tech. From Gilchrist to Tulelake, from Lakeview and Alturas to Dunsuir, Mount Shasta and Weed, this is the greater community in which we live.