

NEW SUPER MARKET RISING — Construction is moving to the near completion stage on this new building in the Town and Country Shopping Center which will house the Three C Market. It provides 24,000 square feet of floor space. Plans call for the newest, most modern super-market of the area when completed. The construction work is being done by Wilson and Dean, Portland contractors. This building and the new Payless Drug building

above are just two of the many new changes currently underway and planned for the future in the rapidly expanding Town and Country Shopping Center. Expansion plans are the keyword along South Sixth Street as many additional new buildings are being constructed and others expanded. The street itself is being widened and improved.



GIGANTIC NEW DRUG STORE — These spacious accommodations are being prepared in the Town and Country Shopping Center for the Payless Drug Store. The building, providing over 20,000 square feet of floor space, is nearing completion and is being constructed by

the Brosterhus Construction Company. Payless Drug will continue to operate its downtown location and this building will house the operation currently in the Town and Country with room for great expansion.

Electricity Usage Up During '64

Householders in the area continued to boost usage of electricity during the past year according to Pacific Power & Light Company, with the average annual household consumption reaching a new record level.

Noting the system-wide residential usage increased by 455 kilowatt-hours on the average, the company reported the average annual consumption was 9,727 kilowatt-hours but that the higher standard of "electric living" and greater usage in the local area placed the average annual consumption at 11,144.

Looking at the New Year's construction program needed to improve and expand the system, PP&L reported it plans to expend \$41,150,000 during 1965, of which \$20-million will be in local districts, a record amount for this category of work.

"During the past year the company's construction program required the outlay of \$42,745,000. Of this amount, \$28 million went into so-called regular district projects and maintenance work and \$14 million went for large-capacity transmission circuits needed to move energy from power plants to load centers and the completion of a coal-fired steam electric generating unit expanding the company's big power plant supplying Wyoming," according to PP&L's district manager, Sam Ritchey.

"The work kept our district line crews and servicemen busy throughout the year and the next year's program calls for the construction of even more local area distribution and other facilities," he added.

PAPERS BY MULE

HOUSTON (UPI)—Newspaper carrier Don McKnight had a problem—he had to break in a team of mules for a trail ride, but he had little free time left after his daily delivery job and school hours.

The enterprising 17-year-old decided to combine the paper delivery and breaking-in. He hitched up the mules to a covered wagon and covered his route daily in the unlikely vehicle, delighting the children of his newspaper customers.

Telephone Utilities Plan Improvements

MERRILL — The substantial investments in plant improvements to be made during 1965 by the United Utilities Corporation in the Klamath Basin will indicate the great faith the corporation has in the Klamath Basin, it has been announced by district manager Richard W. Ackerman.

The United Utilities Corporation operates two companies in this area: the Oregon-Washington Telephone Co., and the California Oregon Telephone Company.

The combined 1965 budget for these two companies to be invested in plant improvement is \$195,000. The major amount will be invested in outside cable pole line and wire facilities. There will be some additions also in central office switching equipment in all areas. The company will also install a mobile radio system. Ackerman reports, with radios in all vehicles. This will improve the overall operation and efficiency of the corporation and will reduce service time to all subscribers.

Engineering was also recently started on the complete re-vamping of service to subscribers in the Bonanza-Dairy-Lorella area. This study will possibly require the remainder of the year to finish. As soon as completed the program will get underway with all new plant and cable to be added in the Bonanza-Dairy area, arranged to fit into the overall engineering study, Ackerman explained.

Both the immediate and long-range planning to improve service in all areas is now underway. The program will improve the economics of the Klamath Basin for many years, Ackerman pointed out.



1905 - 1965
60 YEARS OF
PROGRESS!



ROBERT VEATCH
President & Manager

Personal Service By
Local People Who Know
The Klamath Basin!

TITLE INSURANCE
ABSTRACTS
ESCROW SERVICE

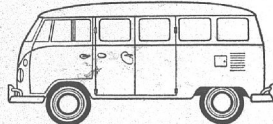
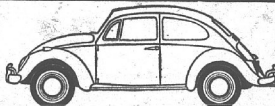
Klamath County Title Co.

"Klamath County's Only Home-Owned Title Co."

422 Main Street

Phone 884-5155

We Sell Volkswagens

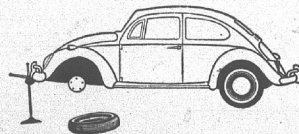


We Sell Station Wagens

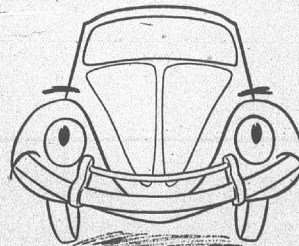
We Trade Volks and Wagens



We Service Volkswagens
and Station Wagens



WE'VE BEEN
DOING THIS
LONGER THAN
ANYONE ELSE
IN THE STATE
OF OREGON.

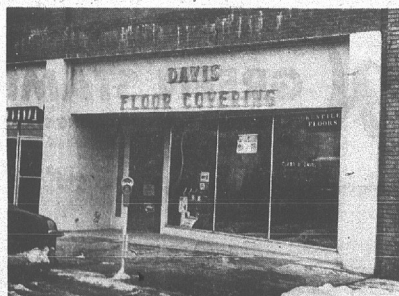


HOW ABOUT THAT?

MAURY'S Foreign Cars

2727 So. 6th St.

Klamath Falls, Oregon



Claud H. Davis



Rex Davis

1916 to 1965 . . .

Almost Half a Century of Service
to Klamath Basin Homeowners!

- ★ Linoleum and Vinyl Floor Coverings
- ★ Quality Carpeting Sales & Installation
- ★ Window Shades Made to Order
- ★ Large Stock of Draperies & Drapery Rods

CLAUD H. DAVIS FLOOR COVERING & WINDOW SHADE HOUSE

426 MAIN STREET

PHONE 884-4684