

## \$800,000 Program Nears End

An \$800,000 capital improvement program will be completed at Klamath Plywood Corporation in a few months. The extensive modernization program began more than a year ago when a log haul, bark and block hauling system was constructed at a cost of about \$150,000. Phase two of the revamping which includes addition of new equipment and buildings and alterations in plant layout commenced in March, 1964, when work began on a 15,000 square foot building addition. This structure now houses a 16-section Moore gas fired veneer dryer. Changes were also made in plant layout. Cost of this portion of the plan was about \$250,000. In December, the last phase work began. This will include a complete new green end consisting of a Coe automatic charger and lathe, an automatic tippie and tray system, two veneer clippers and green veneer off-bearing tables. A new veneer clipper is also being installed. Veneer clips are presently being sold to Weyerhaeuser Company.

Cost of this phase, scheduled for completion sometime in May, is approximately \$350,000. Brosterhus Construction Company was awarded the new building and alteration contracts. Klamath Iron Works is presently fabricating the tippie and tray system. The electrical and lighting contracts were awarded to East Side Electric. Many other local business firms and construction personnel furnished materials and labor during the modernization program.

Andy Hanzel, general manager of the corporation, said completion of the third phase will mark almost total renovation of the mill facilities that began operations in 1957 as Klamath Plywood Corporation with a annual payroll of about \$1.2 million.

Today, approximately 165 men are employed at Klamath Plywood Corporation with a annual payroll of about \$1.2 million.

### More Comfort Wearing FALSE TEETH

Here is a pleasant way to overcome loose plate discomfort. Fastart is an improved powder, spritzed on upper and lower plates holds them firmly so that they feel more comfortable. No denture adhesive (paste or acid). Does not sour. Checks plates and dentures. Call 824-7400 at drug counters everywhere.

## Reunions! Should be Planned Now!

If your class, club, organization, or family is due for a reunion this spring or summer, now is the time to start making plans. The "reunion experts" at the Winema Motor Hotel have the experience and the "know how" to help you in every step of the planning.

## Winema Motor Hotel

1111 Main Street

## TILE WORK

## 28 Years of Progress in the Klamath Basin!

Fine building calls for fine tile work, and Corkery Tile is proud to have been called upon for such important projects as the Presbyterian Intercommunity Hospital, U.S. National Bank, Equitable Savings & Loan, O'Hair's Memorial Chapel, and many others!



CECIL B. CORKERY  
Owner & Manager

## Ceramic Tile - Marble - Terrazzo

COMMERCIAL - RESIDENTIAL

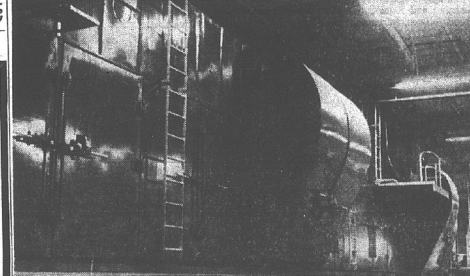
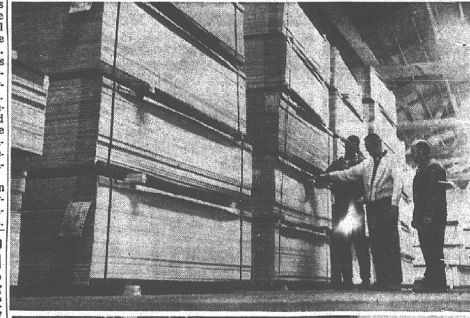
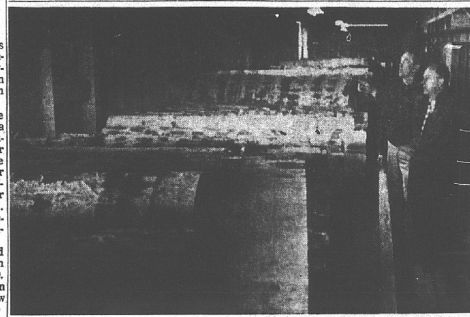
- ★ Bathrooms
- ★ Kitchens
- ★ Floors
- ★ Store Fronts
- ★ Patios
- ★ Table Tops

For Quality Tile Work... there is no Substitute for Experience!

## Corkery Tile & Marble Co.

5548 South 6th

Phone 882-4366



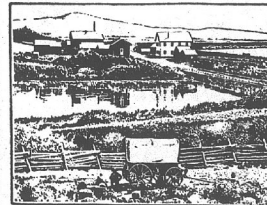
**IMPROVEMENT PROGRAM NEARS COMPLETION** — An extensive capital improvement program that began at Klamath Plywood Corporation more than a year ago is scheduled for completion in three months. Total cost of the improvement program will be almost \$800,000. First phase of the program was the installation of a log haul, bark and block hauling system. In view at top, Dick Newman, left, and Aaron Abbs check out some of this equipment. Center view, left to right, Bill Snyder, Andy Hanzel, and Abbs look over some of the plywood production. At bottom, a view of the new 15,000 square foot building addition and the 16-section Moore gas fired veneer dryer which was phase two of the improvement plan. The third phase will include a complete new green end with an automatic tippie and tray system, two veneer clippers and green veneer off-bearing tables. Hanzel is general manager of the corporation.

**KF Firm Tops Bidders** — Thompson & Silver Lake was the only Warne of Klamath Falls were successful bidders on the \$39 million board feet offering for the Bly Ranger District, Fremont National Forest. The high bid was \$27 per million board feet for Ponderosa Pine and \$7.15 for Lodgepole Pine for a total of \$9,934.50. The appraised value of the timber was \$9,764.50. Emery Logging Company is May.

**NEW ROUTE** — British United Airways said Thursday it will operate a London to Leningrad air service starting in May.

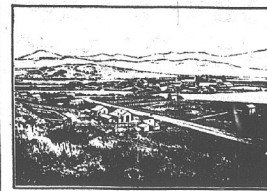
**LONDON (UPI)** — British United Airways said Thursday it will operate a London to Leningrad air service starting in May.

## First Federal presents 'Klamath's 100 Years of PROGRESS'



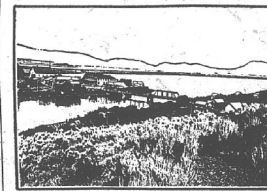
1874

Within a decade after George Nurse built his store on the east bank of Lake Drive he was a busy log operator. In 1874 he built the first small building cluster about the covered wagon and horse-drawn saw mill. These buildings were the first of many that were built in the area. Nurse's store was a log house with a porch. It was built on a hillside overlooking the river. The store was built in 1874 and was the first of many that were built in the area. Nurse's store was a log house with a porch. It was built on a hillside overlooking the river. The store was built in 1874 and was the first of many that were built in the area.



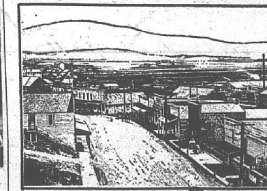
1884

A second ten years of growth marks the beginning of the lumber industry in the Klamath Basin. In 1884 the first saw mill was built on the west side of Lake Drive. Telephone calls indicate progress in construction, with the log haul and block hauling system being built. The first saw mill was built on the west side of Lake Drive. Telephone calls indicate progress in construction, with the log haul and block hauling system being built. The first saw mill was built on the west side of Lake Drive. Telephone calls indicate progress in construction, with the log haul and block hauling system being built.



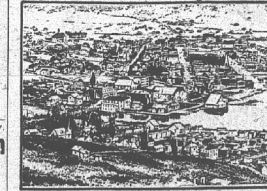
1894

The close of a third decade shows much to be proud of in the history of the Klamath Basin. In 1894 the first saw mill was built on the west side of Lake Drive. Telephone calls indicate progress in construction, with the log haul and block hauling system being built. The first saw mill was built on the west side of Lake Drive. Telephone calls indicate progress in construction, with the log haul and block hauling system being built.



1904

At the end of the fourth decade nearly completely new in evidence. In 1904 the first saw mill was built on the west side of Lake Drive. Telephone calls indicate progress in construction, with the log haul and block hauling system being built. The first saw mill was built on the west side of Lake Drive. Telephone calls indicate progress in construction, with the log haul and block hauling system being built.



1914

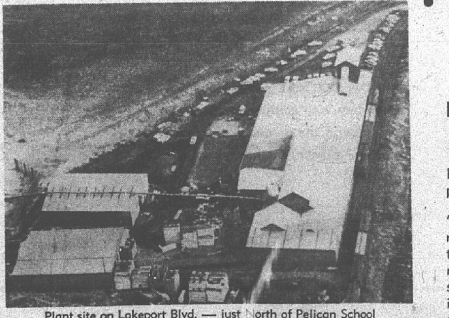
During Klamath's first half century, the construction of many dams, bridges, and other structures was completed. In 1914 the first saw mill was built on the west side of Lake Drive. Telephone calls indicate progress in construction, with the log haul and block hauling system being built. The first saw mill was built on the west side of Lake Drive. Telephone calls indicate progress in construction, with the log haul and block hauling system being built.



TODAY

THIS AERIAL PHOTO, made during the summer of 1964, near a century after George Nurse made his courageous effort to begin development to this area, shows an amazing growth. Klamath Falls has spread across one-time farm lands and into the foothills. The vast south suburban area which can't be seen in this picture, pushes southward and eastward along the valley. All of this is the result of thinking and planning by men who sacrificed and worked for progress men who got by on so little to build so much. FOR THE LAST THIRD of this century of progress First Federal Savings and Loan has been a vigorous and important part of planning and building. Today, with assets of more than \$32 million, First Federal is a mutual association of folks like you, and you, and you, and you, planners and savers who have their money working to begin a second CENTURY OF PROGRESS for our wonderful Klamath area.

**FIRST FEDERAL**  
Savings and Loan Association  
540 MAIN STREET  
4.50% PER ANNUM



Plant site on Lakeport Blvd. — just north of Pelican School Klamath Falls, Ore. Phone 862-3451

## JELD-WEN, INC.

Manufacturing Ponderosa Pine Window Frames Door Frames and Sash!

Four years ago, when only four months old, we stated in the first progress edition as follows: "It is the intention of Jeld-Wen, Inc. to be aggressive in obtaining new customers and expanding its business. It is also its intention to make the terms "quality" and "service" synonymous with the name Jeld-Wen, for it knows that these two factors are most essential to growth. We, at Jeld-Wen, Inc., promise to do our share in bringing continued growth and prospects to the Klamath Basin." The following is a capsule report of our progress to date:

- Production and sales have been increased over 350%.
  - Usage of Ponderosa Pine shop lumber and cutstock have increased proportionately. (All lumber and cutstock comes from the Klamath Basin and surrounding area.)
  - Employment has increased from 15 to over 100 men with an annual payroll of over a half million dollars.
  - Sizable capital improvements have been made to our plant and equipment facilities — over four times the original investment.
- WE AT JELD-WEN, INC. EXPECT TO CONTINUE A HIGH RATE OF GROWTH DURING THE COMING YEARS THUS HELPING TO MAINTAIN A PROSPEROUS KLAMATH BASIN.