

Progressive Firms Boost Basin With Payroll, Construction

Dr. T. E. COLFORD
Dental Office
& Laboratory
*GENERAL DENTISTRY
Dentures & extractions
Dentures Refined, Re-
paired while you wait.
NO APPOINTMENT
NECESSARY
1033 Main 884-3284

Tree Pruning
BAKER'S NURSERY
6200 So. 6th 882-2553

Information was furnished by the firms listed below:
A. A. Auto Lease Inc. 728 Klamath Avenue. Founded Jan. 29, 1959.
Owners: Elbert Sikes, George Duran, Bob Mast, Elton Baltzer, Stewart Baltzer, A. V. Moore. Manager, Steve Wabner.
Spent 164 for new plant; equipment: \$15,000.

250 Spring and 318 Quarry. Owners: Elbert Sikes, George Duran. Employees: Average 45. 1964 season. Amount spent in new equipment: \$45,000.
A. A. Auto Lease Inc. 728 Klamath Avenue. Founded Jan. 29, 1959.
Owners: Elbert Sikes, George Duran, Bob Mast, Elton Baltzer, Stewart Baltzer, A. V. Moore. Manager, Steve Wabner.
Spent 164 for new plant; equipment: \$15,000.

Market Basket Store. 112 North Ninth, South Sixth at Shasta St. Founded 1955. Norm Duran. Employees: Twenty eight full and part-time. New equipment: \$20,000. Amount spent in new equipment: \$20,000. In 1964 added new equipment: \$20,000. In 1965 added new equipment: \$20,000. Shows feature two of the remaining 1964 equipment service department.
Matter Bros. Millwork. 228 South Sixth. Founded 1935.
Owners: Bill Everett, George and Jack Matter and Charles J. Jones. New equipment: \$27,746. New equipment added in 1964: two new machines, valued at \$15,000.

Owners: Elbert Sikes, George Duran, Bob Mast, Elton Baltzer, Stewart Baltzer, A. V. Moore. Manager, Steve Wabner.
Spent 164 for new plant; equipment: \$15,000.
A. A. Auto Lease Inc. 728 Klamath Avenue. Founded Jan. 29, 1959.
Owners: Elbert Sikes, George Duran, Bob Mast, Elton Baltzer, Stewart Baltzer, A. V. Moore. Manager, Steve Wabner.
Spent 164 for new plant; equipment: \$15,000.

Owners: Elbert Sikes, George Duran, Bob Mast, Elton Baltzer, Stewart Baltzer, A. V. Moore. Manager, Steve Wabner.
Spent 164 for new plant; equipment: \$15,000.
A. A. Auto Lease Inc. 728 Klamath Avenue. Founded Jan. 29, 1959.
Owners: Elbert Sikes, George Duran, Bob Mast, Elton Baltzer, Stewart Baltzer, A. V. Moore. Manager, Steve Wabner.
Spent 164 for new plant; equipment: \$15,000.

Watch for it!
MERIT'S

LAKE COUNTY'S OLDEST COMPLETE AIR SERVICE

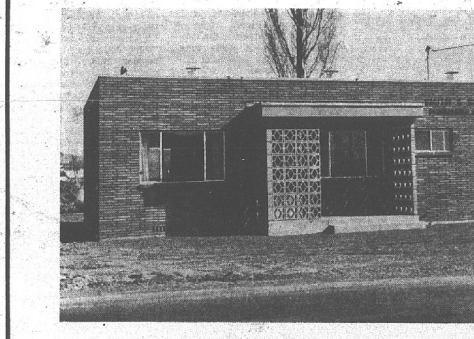


Shown above are Myron and Jeanne Buswell along with two of the aircraft available at Buswell Flying Service.

SERVING THE ENTIRE WEST from Klamath Valley with a most complete air taxi service. For example; San Francisco is just 2 1/2 hrs. away by charter . . . Portland is just 2 hrs. Convenient main line connections to Klamath Falls, Reno and other points. Call for prices. We are now celebrating our 15th year of service in Lakeview. Myron and Jeanne Buswell, along with daughters Annette and Lisa, welcome your visit. Call us for . . .

- AIR TAXI SERVICE • AIR AMBULANCE SERVICE • SCENIC RIDES
- AIRCRAFT SALES AND SERVICE • We have UNICOM, lighted runways and Shell Oil Products

BUSWELL Flying Service
Lake County — Lakeview Airport
PHONE WH1tehol 7-8240



Professional Engineering & Surveying
For
Land Development

We are proud to have played a part in the progress of the Klamath Basin. Our new headquarters building at the corner of South 6th and Summers Lane is just one example of this progress. During recent years one of our major projects has been the subdivision of over 25,000 acres of recreational land.

- Registered in Oregon and California**
- SUBDIVISIONS
 - PROPERTY BOUNDARIES
 - DRAINAGE SYSTEMS
 - LAND LEVELING
 - ROADS, STREETS
 - IRRIGATION SYSTEMS
 - DAMS, WATERWAYS
 - CONSTRUCTION PROJECTS

Smith and Westvold
Lyle C. Smith and Joseph S. Westvold
2333 Summers Lane
Phone 884-3691

‘Just Normal Folks’ Find Themselves In Columns

By ANN LANDERS
Dear Ann Landers: I began to read your column nine years ago — for I laugh, I stopped laughing for the first two months when I saw my wife, my children, my mother and my brothers. The boss, the family next door then finally myself.

Your column is a compendium of psychology, philosophy, English composition, sociology and social justice. And I think there is the humor. It is incomparable. But this is not what I started out to say.

I'm writing today about the letter signed "Just Normal Folks." They can't understand why there are so many screwballs in the world, much less why lives are all lashed up. I have known people like that and they make me sick. They are so proud of themselves, as if they fashioned their good fortune with their own two hands. They congratulate each other daily on how well they are handling their lives.

By their standards I am not normal because I have had a great deal of trouble in my life. I did not arrange to have my father die under the wheels of a truck when I was 15. Nor was I responsible for my mother's heart attack two years later. I was not to blame for my brother's divorce or his suicide which followed. It is not my fault that my wife and I have lost two of our four children to polio and that a fifth child was still-born.

I don't know what luck is, and I don't know how much bad luck people bring on themselves, but I do know that some folks have a tougher time than others. I hope nothing unfortunate ever strikes Just Normal Folks. They would go down without a trace. — BATTLE SCARRED

Dear Battle Scarred: Trouble is an inevitable part of living. Voltaire wrote, "A man who says 'I have no troubles' is a liar or an idiot." And I'm with him.

Dear Ann Landers: My husband insists the next time he hears our 15-year-old daughters say on the telephone "What are you gonna wear to school today?" he is going to hit her on the seat with a hairbrush.

It's annoying to hear her confer with girl friends every morning about clothes but I don't feel this is particularly bad.

Please pour a little oil on the troubled waters — BALANCE WHEEL

Dear Ann Landers: I'm going to disguise my letter by changing some of the initials, because I don't want to embarrass anyone.

My uncle was the attorney general of this state 10 years ago. Every time my husband introduced me it went like this, "Meet my wife, Betty. She's the niece of the attorney general."

I never cared for this introduction, and I told my husband, but it's his help.

He still introduces me as the niece of the attorney general, although my uncle has been out of office since 1959. My husband

First telephone directory was issued at New Haven, Conn., on Feb. 21, 1878, and contained the names of 59 subscribers.

Owners: Elbert Sikes, George Duran, Bob Mast, Elton Baltzer, Stewart Baltzer, A. V. Moore. Manager, Steve Wabner.
Spent 164 for new plant; equipment: \$15,000.
A. A. Auto Lease Inc. 728 Klamath Avenue. Founded Jan. 29, 1959.
Owners: Elbert Sikes, George Duran, Bob Mast, Elton Baltzer, Stewart Baltzer, A. V. Moore. Manager, Steve Wabner.
Spent 164 for new plant; equipment: \$15,000.

Owners: Elbert Sikes, George Duran, Bob Mast, Elton Baltzer, Stewart Baltzer, A. V. Moore. Manager, Steve Wabner.
Spent 164 for new plant; equipment: \$15,000.
A. A. Auto Lease Inc. 728 Klamath Avenue. Founded Jan. 29, 1959.
Owners: Elbert Sikes, George Duran, Bob Mast, Elton Baltzer, Stewart Baltzer, A. V. Moore. Manager, Steve Wabner.
Spent 164 for new plant; equipment: \$15,000.

Owners: Elbert Sikes, George Duran, Bob Mast, Elton Baltzer, Stewart Baltzer, A. V. Moore. Manager, Steve Wabner.
Spent 164 for new plant; equipment: \$15,000.
A. A. Auto Lease Inc. 728 Klamath Avenue. Founded Jan. 29, 1959.
Owners: Elbert Sikes, George Duran, Bob Mast, Elton Baltzer, Stewart Baltzer, A. V. Moore. Manager, Steve Wabner.
Spent 164 for new plant; equipment: \$15,000.

Owners: Elbert Sikes, George Duran, Bob Mast, Elton Baltzer, Stewart Baltzer, A. V. Moore. Manager, Steve Wabner.
Spent 164 for new plant; equipment: \$15,000.
A. A. Auto Lease Inc. 728 Klamath Avenue. Founded Jan. 29, 1959.
Owners: Elbert Sikes, George Duran, Bob Mast, Elton Baltzer, Stewart Baltzer, A. V. Moore. Manager, Steve Wabner.
Spent 164 for new plant; equipment: \$15,000.

Owners: Elbert Sikes, George Duran, Bob Mast, Elton Baltzer, Stewart Baltzer, A. V. Moore. Manager, Steve Wabner.
Spent 164 for new plant; equipment: \$15,000.
A. A. Auto Lease Inc. 728 Klamath Avenue. Founded Jan. 29, 1959.
Owners: Elbert Sikes, George Duran, Bob Mast, Elton Baltzer, Stewart Baltzer, A. V. Moore. Manager, Steve Wabner.
Spent 164 for new plant; equipment: \$15,000.

Owners: Elbert Sikes, George Duran, Bob Mast, Elton Baltzer, Stewart Baltzer, A. V. Moore. Manager, Steve Wabner.
Spent 164 for new plant; equipment: \$15,000.
A. A. Auto Lease Inc. 728 Klamath Avenue. Founded Jan. 29, 1959.
Owners: Elbert Sikes, George Duran, Bob Mast, Elton Baltzer, Stewart Baltzer, A. V. Moore. Manager, Steve Wabner.
Spent 164 for new plant; equipment: \$15,000.

Owners: Elbert Sikes, George Duran, Bob Mast, Elton Baltzer, Stewart Baltzer, A. V. Moore. Manager, Steve Wabner.
Spent 164 for new plant; equipment: \$15,000.
A. A. Auto Lease Inc. 728 Klamath Avenue. Founded Jan. 29, 1959.
Owners: Elbert Sikes, George Duran, Bob Mast, Elton Baltzer, Stewart Baltzer, A. V. Moore. Manager, Steve Wabner.
Spent 164 for new plant; equipment: \$15,000.

Owners: Elbert Sikes, George Duran, Bob Mast, Elton Baltzer, Stewart Baltzer, A. V. Moore. Manager, Steve Wabner.
Spent 164 for new plant; equipment: \$15,000.
A. A. Auto Lease Inc. 728 Klamath Avenue. Founded Jan. 29, 1959.
Owners: Elbert Sikes, George Duran, Bob Mast, Elton Baltzer, Stewart Baltzer, A. V. Moore. Manager, Steve Wabner.
Spent 164 for new plant; equipment: \$15,000.

Owners: Elbert Sikes, George Duran, Bob Mast, Elton Baltzer, Stewart Baltzer, A. V. Moore. Manager, Steve Wabner.
Spent 164 for new plant; equipment: \$15,000.
A. A. Auto Lease Inc. 728 Klamath Avenue. Founded Jan. 29, 1959.
Owners: Elbert Sikes, George Duran, Bob Mast, Elton Baltzer, Stewart Baltzer, A. V. Moore. Manager, Steve Wabner.
Spent 164 for new plant; equipment: \$15,000.

Owners: Elbert Sikes, George Duran, Bob Mast, Elton Baltzer, Stewart Baltzer, A. V. Moore. Manager, Steve Wabner.
Spent 164 for new plant; equipment: \$15,000.
A. A. Auto Lease Inc. 728 Klamath Avenue. Founded Jan. 29, 1959.
Owners: Elbert Sikes, George Duran, Bob Mast, Elton Baltzer, Stewart Baltzer, A. V. Moore. Manager, Steve Wabner.
Spent 164 for new plant; equipment: \$15,000.

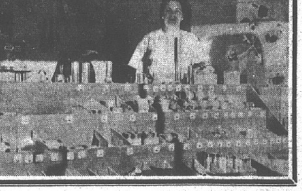
Owners: Elbert Sikes, George Duran, Bob Mast, Elton Baltzer, Stewart Baltzer, A. V. Moore. Manager, Steve Wabner.
Spent 164 for new plant; equipment: \$15,000.
A. A. Auto Lease Inc. 728 Klamath Avenue. Founded Jan. 29, 1959.
Owners: Elbert Sikes, George Duran, Bob Mast, Elton Baltzer, Stewart Baltzer, A. V. Moore. Manager, Steve Wabner.
Spent 164 for new plant; equipment: \$15,000.

Owners: Elbert Sikes, George Duran, Bob Mast, Elton Baltzer, Stewart Baltzer, A. V. Moore. Manager, Steve Wabner.
Spent 164 for new plant; equipment: \$15,000.
A. A. Auto Lease Inc. 728 Klamath Avenue. Founded Jan. 29, 1959.
Owners: Elbert Sikes, George Duran, Bob Mast, Elton Baltzer, Stewart Baltzer, A. V. Moore. Manager, Steve Wabner.
Spent 164 for new plant; equipment: \$15,000.

Owners: Elbert Sikes, George Duran, Bob Mast, Elton Baltzer, Stewart Baltzer, A. V. Moore. Manager, Steve Wabner.
Spent 164 for new plant; equipment: \$15,000.
A. A. Auto Lease Inc. 728 Klamath Avenue. Founded Jan. 29, 1959.
Owners: Elbert Sikes, George Duran, Bob Mast, Elton Baltzer, Stewart Baltzer, A. V. Moore. Manager, Steve Wabner.
Spent 164 for new plant; equipment: \$15,000.

DON'T LET MONEY GO DOWN THE DRAIN!

You're "PLUMB RIGHT" When You Deal With...
Stites PLUMBING CO.
2011 OREGON AVE.
19 YEARS OF SERVICE TO THE KLAMATH BASIN
DO-IT-YOURSELF!
Bring Your Plumbing Problems To Art & Pat



PICTURE OF NEW SHOWROOM AND OFFICE GOES HERE!

Actually our new showroom and offices at the corner of Center & Klamath Ave., (Across from Veterans's Memorial Park) just aren't ready to have their picture taken. You can see them yourself when you attend our Grand Opening. Watch for it!

Biggest Progress in Linkville Since Link River Bridge Was Built!

J. W. Copeland adds new facilities & new lines to Serve You Better!

Watch for the big Grand Opening . . . coming soon! It's Klamath's newest, most modern home building center! New lines are being added including power tools, plumbing supplies, and many do-it-yourself features! And you can depend on the same Copeland quality and low prices that have made your Copeland Lumber Yards the building material leaders in the State of Oregon for over 50 years. Come see us soon, won't you?

Buy on Copeland's Revolving Charge Plan or Build or Remodel on Long, Low, Easy Terms!

J. W. Copeland Lumber
66 Main to 66 Klamath and Center
Phone 884-3197