

# United Grocers Group Shows Big Expansion

In 1954 a group of 51 Portland retailers formed a so-called "buying exchange" named United Grocers of Oregon. The earliest available record indicates that purchases for the members amounted to about \$360,000 in 1917. From this humble beginning has developed the only retailer owned grocery wholesaler in the state of Oregon.

At the annual meeting of United Grocers, Inc. (its present name) held at the Sheraton Motor Inn, more than 500 members and employees were told by Harry Thyges, general manager, of the great year in the company's 50-year history. Sales exceeded \$64.4 million, a gain of 10.7 per cent over the previous fiscal year. Bob Lille, retiring from a three-year term on the board of directors, and as president for 1964, urged the members at the meeting to continue the combined efforts that have enabled the 330-member stores in Oregon, Southwest Washington and Northern California to grow and prosper so successfully in an increasingly competitive market.

United's main plant on Lake Road in Milwaukie, was enlarged during 1964 and now consists of an area of almost seven acres under one roof. From this huge facility member stores are served with groceries, fresh produce, health and beauty aids, housewares and perishable products. In addition, a complete frozen food department is operated at Terminal Ice & Cold Storage Company on McLoughlin Blvd., and a bakery department is operated in Gresham. A new venture was begun in 1964 when an egg production plant was started in Newberg.

Besides the Portland area facilities United also maintains a



# Business Review

By Floyd L. Wynne

HERALD AND NEWS, Klamath Falls, Ore. Sunday, February 21, 1965 PAGE-3B

## Education Benefits From Big Business

NEW YORK (UPI)—Make a telephone call: buy a gallon of gasoline or a new car in which to put it; take a picture of the new buggy to send to the young ones at school—and, indirectly, one helps defray the costs of higher education.

The extent to which colleges and universities rely upon revenue from business giants of the United States and Canada has been demonstrated anew in the 1964 study of endowment funds made by the Boston Fund. It examined the endowments of 67 institutions of higher learning, ranging from McGill University and Queen's University in Canada to Stanford and Pomona on this nation's West Coast.

Harvard Leads Endowments studied ranged from about \$7.5 million (Colorado College) to more than \$823 million (Harvard University). Boston Fund said that it believed the selections "represent a reasonable cross-section of such institutions, varied with respect to educational purpose, size of endowment, age and geographical diversification."

Resources in cash, bonds, preferred and common stocks, and other investments totaled \$5,243,550,335, with 58.2 per cent of the funds' total represented in common stocks. Sixty-six

## Sugar Firm Advances Local Man

Charles Heilbroner has been promoted to the position of plant engineer at the Spreckels Sugar Company's Manteca factory. It was announced today by Al K. Boyden, factory manager.

Heilbroner will fill a vacancy created by the transfer of former plant engineer Charles Gassaway to a similar position on the staff of the company's new Arizona installation currently under construction.

A native of this city, Heilbroner graduated with a B.S. degree in engineering from Oregon State University. He served with the Air Force immediately after graduation and upon his release in 1952 joined the Weyerhaeuser Co. here.

Heilbroner was also associated with the U.S. Steel Co. in Pittsburg, Calif., prior to joining Spreckels in 1964.

## Chard Takes Shell Course

Kenneth Chard, who will operate the Shell service station located at 728 South Sixth, recently returned from a four-week Shell Oil Company Training School in Tacoma.

The school features advanced retailing techniques with primary emphasis on business management. Training is also given in salesmanship, Shell lubrication, product knowledge, and in-bus service.

The school is designed to assist the dealer in gaining greater knowledge of his role as a businessman, as well as to prepare him to provide greater quality service to satisfy the needs of his customers.

## Anniversary Recalls Value Of Electricity

NEW YORK (UPI)—To most people today electricity is so familiar a commonplace we think little of it. How it is generated, or in what form it reaches us, is unimportant—as long as the lights go on when we snap the switch.

However, the 118th anniversary recently of Thomas A. Edison's birth recalls an interesting history in the evolution of electric power, the so-called battle of the currents—AC vs. DC.

To his dying day, Edison was the champion of direct current (DC), electricity which flows continuously in one direction. Edison invented the incandescent lamp in 1879 and three years later put the world's first central steam electric station on line to supply power economically to the homes.

Edison Electric Illuminating Co. serviced the highly populated Wall Street area in New York.

Opposition to Edison was rising to him were such prominent adversaries as George Westinghouse, who, backed by the genius of Nicola Tesla, promoted alternating current (AC), electricity which reverses its direction at regular intervals, some 60 times per second. In August, 1885, power generators at Niagara Falls supplied electricity to their first customer, Pittsburgh Reduction Co., now the Aluminum Company of America. By 1890 at least 90 per cent of the electricity generated and transmitted throughout the world was alternating current.

Although it would seem that Thomas Edison had lost the battle, we find that direct current soon will be returning to the United States on a large scale—thanks to Swedish electrical engineers and to ASEA, Sweden's largest electrical manufacturer.

In the 1930s, just when it seemed AC had proved its superiority for the great majority of uses, Swedish engineers, faced with the problem of transporting power generated in northern waterfalls to the industrial south, discovered electricity could be transmitted most advantageously over long distance—say 300 miles or more—via Edison's DC. DC transmission lines carried more power, were cheaper to build and their smooth electrical stream was cheaper to control and to blend with current from other sources. DC also was more advantageous for transmitting power under water.

It remained only for ASEA technicians to develop the mercury arc valve to convert DC for transmission and back into AC again. In 1954, the first high-voltage DC power link was commissioned—from Vastervik in Sweden to the island of Gotland, 60 miles offshore. In 1961, a high voltage DC (HVDC) link beneath the English Channel was commissioned, using the largest jonic valves in the world and connecting the British and French power systems.

More DC projects This year, four more HVDC systems go into operation—in Northern Europe, New Zealand, Italy and Japan. And direct current is on its way back to the United States.

The \$700 million Pacific Inter-Link, already authorized by the Pacific Northwest where electric power is abundant and cheap, with the Pacific Southwest where power is neither.

Five extra-high voltage transmission lines, with capacity to handle more than 5 million kilowatts, will be built to carry power from the Columbia River in Oregon to California, Nevada and Arizona. Three of the proposed long-distance transmission lines—the longest 830 miles—will be the first in the United States to carry extra high voltage direct current.



## SEARS OFFICIALS VISIT

This special planeload of officials from Sears, Roebuck and Company arrived in Klamath Falls Tuesday for a one-day visit. They reviewed the operations and merchandising of the local store. Shown here, from left, William E. Genter, manager of the Klamath Falls store; Ralph D. Carpenter, Don Bode, George L. Wallenberg, Pacific Northwest Zone

manager; Dula McCarty; R. H. Baird, William Jay, R. A. Fraidenrich, John Reid, Gordon Harfenricher, R. D. Sundby and W. Schubel, manager of the Sears' outlet in Medford. The visiting group is known as the Pacific Northwest Zone Merchandise Supervisory Staff. They left Wednesday afternoon in the special Sears plane shown in background.

## Trucking Firm Tries 'Purr-fect' Shipping

Perfect shipping is a universal goal at Pacific International Express Co. — but "purr-fect" shipping is another matter, claim Seattle and Los Angeles employees of the trucking firm after their recent encounter with a live cat from the great Northwest.

Hero of the tale is "Sir Thomas," a Seattle tomcat who overnight became one of PIE's most celebrated LTL (less-than-truckload) shipments after he unwittingly stowed away for a 1,174-mile ride on one of the California-bound trailers. "villain" was an innocent-looking packing case which Sir

Thomas mistook for a nice, cozy napping place.

Sir Tom's vagabond trek began when his owner, Mrs. Josephine Lewis, Seattle, had some personal effects packed in a pi-an box for shipment to relatives in Whittier, Calif. When the packer had finished and the box had been nailed shut, PIE was called to pick up the crate and ship it to California. Away it went — and, unknown to anyone, so did Sir Thomas.

The errant feline wasn't missed until late in the day. After searching high and low, Mrs. Lewis wondered if Sir Thomas, didn't appear to be inside. If he were, he was being as quiet — into the piano box while no one was looking and snuggled down for a pleasant snooze.

She quickly called the Seattle terminal and explained her plight to the evening dock crew which was getting freight ready — for shipment included — for outbound loading.

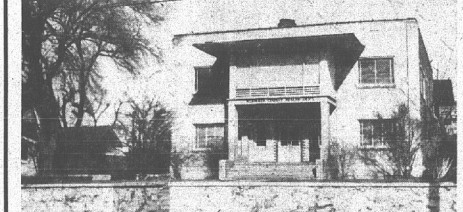
When delivery had been accomplished, an air of suspense prevailed as the lid was hastily pried away. Moments later, out crawled Sir Thomas, slightly charged, but none the worse for his unexpected adventure.

Back home in Seattle after a much more comfortable return trip, Sir Thomas is the undoubted "top dog" — oops! "top cat" — in his neighborhood.

"It was quite a pad," purrs Tom these days as he regales his feline friends with recollections about his journey. "Some day maybe I'll take you with me on a fast-rip in a PIE rig down to sunny California."



UNITED GROCERS OFFICERS — Shown here are new officials of the United Grocers of Oregon. From left, they are Willard Durst, Portland, president, and Eugene Love, Astoria and Seaside, vice president. Board members, Henry Haring, Cornelius, Walter Southwell, Lake Oswego; George Muramatsu, Oak Grove, and Richard Hicks, Grants Pass. Not present for picture was Kenneth Cuse of Hillsboro.



## FOR SALE By KLAMATH COUNTY

Klamath County is offering for sale the above pictured building which was formerly the Klamath County Health Dept.

This Bldg. is in a Zone C1 (Restricted Commercial) area which allows it to be used for many different purposes. The location & size of the Bldg. lends itself to be used for office space, apartments, and possibly even a school dorm on a conditional use basis with permission of the city council.

This Bldg. is located at 1949 Main St. which enjoys a convenient location to the downtown area. Its 12,672 square feet of floor space is economically heated by a hot water well.

Prospective buyers may see the Bldg. during week days from 8:00 to 5:00 by contacting the Purchasing Agent Dept. in the County Court House.

Scaled bids clearly marked "Health Dept. Bid" may be mailed or delivered to the Klamath County Clerk's office, not later than 10:00 A.M., March 3, 1965, at which time they will be publicly opened.

All bids must be accompanied by a certified check in the amount of ten per cent of the bid.

## What Kind of a "Nut" Is He?

- He wants to run his own business.
- He wants to satisfy his own doctor.
- He wants to make his own bargains.
- He wants to buy his own insurance.
- He wants to select his own trading matter.
- He wants to provide for his own old age.
- He wants to make his own contracts.
- He wants to educate his own children as he wishes.
- He wants to make his own investments.
- He wants to select his own friends.
- He wants to enjoy his own recreation.
- He wants to compete freely in the market place.
- He wants to prove by his own efforts.
- He wants to profit from his own errors.
- He wants to compete with ideas.
- He wants to be a man of good will.

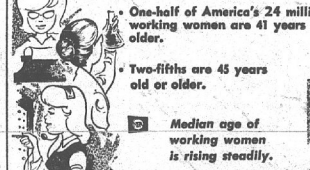
What kind of a nut is he? Not an American who understands and believes in the Declaration of Independence, that's what kind.

And don't you wonder why in many of our fellow Americans are trying to have us destroy the very things that have made us the aim and the envy of every other people on earth? The question is: WHAT KIND OF NUTS ARE THEY?

(Dallas, Texas, America)

Carter-Jones Collection Service, Inc. Pay your bills promptly and keep your credit good.

## Report on the Working Woman



One-half of America's 24 million working women are 41 years old or older.

Two-fifths are 45 years old or older.

Median age of working women is rising steadily.

THE FACTS, MA'AM — One of the big subjects of conversation involves a woman's chances of getting a job later in life after the children are grown. The figures, above, show a large percentage of jobs held by women in the higher-age brackets.

**Office Space**  
Built to suit your needs.  
Lots of parking.  
Call 884-9445

## Wright Joins PPL Salesmen

Patrick Wright, recently of the University where he was affiliated with Theta Chi fraternity, has joined Pacific Power & Light Company in this area. He has been employed by PPL&K for nearly two years after graduation from Oregon State University at Oregon State.

## THE FUTURE BELONGS TO THE FIT

In teaching or television, nursing or news reporting, the future belongs to the fit. The future belongs to those vigorous enough to live it and shape it. Are your schools providing for physical fitness as part of a sound education? You parents can help see that they do. Write The President's Council on Physical Fitness, Washington, D. C. for information.

**LET US HELP YOU BUILD A COMPLETE ROOF OF PLANNED PROTECTION**

BE SAFER WITH LIFE'S AUTO POLICY

(You'll save money too!) Safeco insures preferred risks only, so you save. What's more, we can show you how to fit your auto insurance into a careful plan, to prevent dangerous gaps and costly overlaps. For the most complete roof of planned protection, call us today!

**ART GRIGG, AGENT**  
**KLAMATH VALLEY Insurance Agency**  
2631 Tower Theater Bldg.  
882-6339

**PRESIDENT'S COUNCIL ON PHYSICAL FITNESS**

Published as a public service in cooperation with The Advertising Council and the Newspaper Advertising Executives Association.