

Oregon House, Senate Work Well Together



CHECKING A POINT — Gene Favell, left, Klamath Falls businessman, visits with Sen. Harry Bovin, president of the Senate, and they check out a point on a chart. Favell and his family were in Salem for a Kiwanis Club meeting. His daughter, Alice, was an honorary page in the Senate.



HOUSE AT WORK — This view, taken from the balcony in the House of Representatives, shows Klamath County Representative George Filcraft and Mrs. Filcraft at work. Both are seated in lower left hand corner. No unauthorized persons are permitted access to the floor of either the House or the Senate once the official session has opened. The center door is locked and both side doors are entered only by those with official passes.

New Process Speeds Lamination

TACOMA, Wash. (UPI)—A new process for laminating lumber on a continuous basis is being utilized here.

Presses installed at the Weyerhaeuser Company's Longview Wash., plant will produce roof and floor decking at speeds five

times greater than conventional methods of lamination.

A similar press for continuous production of decking and vertically laminated beams has been installed at the company's Cottage Grove, Ore., plant.

Conventional laminating methods require that lumber be held stationary in a press or hand-clamped while the glue cures.

This method permits an uninterrupted flow of decking or

Lamination produces greater beams to pass through the strength and rigidity.

The lumber is preheated, glue is spread onto the hot surface and the lumber is pressed between two moving steel bands while the glue cures.

This method permits utilization of more forest products because the best lumber can be put on the outside of the wood sandwich where appearance and strength are important and inferior lumber can be used for filling.

Got a Crack?

Call Smilin' Jack

for ALL GLASS NEEDS

- Sheet-Roof Auto Glass
- Libby-Owens Ford
- Saint Gobain
- All Domestic Glass

"the best place to replace"

RIMBALL GLASS CO.

521 Walnut 882-2533
 Free Customer Parking

Hundreds in the Pacific Northwest prefer Capp-Homes because...

No Other Home is so Easy to Own!

Free delivery from our Spokane plant. We offer the most liberal home finance plan in America. With or without down payment. — at low interest rates.

Can we include and finance your existing home? We'll take care of that too. We'll take care of that too. We'll take care of that too.

CAPP HOMES

delivers and erects your home and furnishes:

EXTERIOR: Paired shutters or entry bay doors and thick shutters. INTERIOR: Checkered or polished, dark, polished or light oak flooring, wall-to-wall carpeting, built-in kitchen, built-in bath, built-in linen closet, built-in broom closet, built-in coat closet, built-in closet, built-in wardrobe, built-in linen closet, built-in broom closet, built-in coat closet, built-in closet, built-in wardrobe.

HERE'S A CAPP-HOME MEAN YOU

Can we show it to you? Do you want to see it? Do you want to see it? Do you want to see it?

LOW COST, HONEST FINANCING — AT A FIRM PRICE!

Contact us at our local representative:

RAY HANNAH
 1111 N. 1st St. Bldg. 10
 Klamath Falls, Ore. 97601

MAIL THIS COUPON TODAY TO: Capp Homes, 1111 N. 1st St. Bldg. 10, Klamath Falls, Ore. 97601. We would like to see a Capp Home. If you have one, please call us at 882-2533. If you don't, please call us at 882-2533. We'll be glad to help you. We'll be glad to help you. We'll be glad to help you.

NAME: _____ ADDRESS: _____ CITY: _____ STATE: _____

Committees Lead Effort At Session

(Con. from Previous Page)

portion to your size county." They may be right, but it's also a tribute to the ability of the three legislators we sent up there.

Our interest also was attracted by the lobbyists who occupy an important place in the legislative picture. Backdoor communications have made the word "lobbyist" sound like a modern day monster, but from what I could see they were all fine gentlemen, intent on doing a good job.

Having talked with a number of them, I found that if you wanted the facts on a certain measure, they had them, both pro and con. They knew exactly what effect a certain bill would have.

Irv Luiten, Weyerhaeuser representative, could well be called the "pool laureate" of the legislature. He has turned out a number of classes.

Rep. Grace Peck, Portland, is another character study. Her desk in the corner of the House is a favorite stopping place for those with a sweet tooth. She stocks several shelves of candy and nuts, available to the legislators with her compliments.

Senator Bovin's office is the command post of that body. Mrs. Bovin provides the extra special touch that endears her to everyone, whether she's playing host to other legislators, lending a special hand to honorary pages or just providing feminine balance to the senator himself.

The balconies are generally full of interested spectators. Many schools within driving range bring entire classes to watch the legislature in action. This brings us back to our original premise. It would be good if every person in the state could visit at least one session in either the House or the Senate. One would then more greatly appreciate the time-consuming, hard-working role of our legislators.

Fags Hard On Clothes

HEMPSTEAD, N.Y. (UPI)—American smokers are burning holes in their clothes faster than people can be trained to reweave them.

The national shortage of skilled reweavers was cited by Morton Malin, founder and director of the Eastern School of Reweaving in Hempstead.

"Material that goes to our mills is only about 2,000 qualified reweavers in the U.S. who make their services available to the public. Several hundred more are capable but make repairs only for friends or relatives.

Cigarette and cigar butts, plus much damage, account for more than 60 per cent of the work brought to reweavers.

Malin estimates the trade volume of reweaving done in the U.S. at about \$20 million a year.

The families of Malin and his wife, Gloria, were reweavers for generations. She assists him in grading the work of students who require a great deal of practice.

"Theory is fine," he said, "but experience is more important."

"OFFENDERS" WASHINGTON (UPI)—Rep. Paul Rogers, D-Fla., says that 200 free world ships carried cargo to North Viet Nam during the last six months of 1964.

In a statement Thursday, Rogers said that "these ships continue calling at North Vietnamese ports) even though Americans were being killed in increasing numbers by Communist Viet Cong guerrillas."

Septic Tank

HEALTHY SEPTIC TANKS

CLEAN AND DRAIN

EXPERIENCE IN ALL TYPES OF SEPTIC TANKS

Use SEPTIC Regularly!

Keeps tank working, odor-free, and prevents clogging. Costs less than pumping. Money back guaranteed. 2 treatments. All Year Order or Reorder

149

Impressions Of A Page

By STEVEN E. WYNN

If you ever get a chance to be an Honorary Page in the State Legislature, don't turn it down for it could lead to one of the most memorable experiences in a lifetime. I had this opportunity recently, being a page in both the Senate and the House.

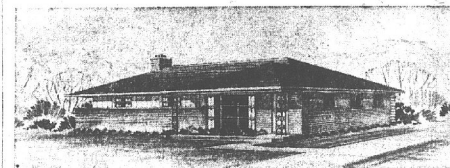
The beginning of a wonderful day was when I reported to Senator Bovin's office to be a Senate Honorary Page, sponsored by Senator Bovin. It was a busy morning and Don Schollander was to be guest of the Legislature. I wasted no time in getting his autograph and observing his medals.

After the session adjourned, Mrs. Bovin provided me with a most enjoyable lunch hour. In order to get to our restaurant, we had to go through a tunnel that led under the street. After lunch, we took a grand tour of the Governor's office. The rest of the afternoon I toured the capital grounds.

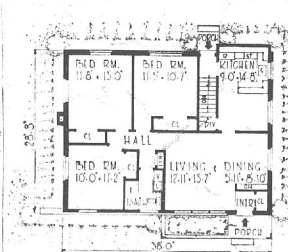
Tuesday I was an Honorary Page in the House of Representatives. I had a very enjoyable morning. After lunch I visited the State Library and an education hearing. Mrs. Howe showed me how a bill is introduced, progresses through the Legislature, and is passed or vetoed.

I spent two days at our State capital, but, in some ways, it seemed like more. I hated to leave.

FAMILY HOMES



DESIGN 404
 1,102 Sq. Ft.
 20,000 Cb. Ft.



BUILDING PLANS • PLAN BOOKS • ORDER FORM

Herald and News Plan Dept.
 FAMILY HOMES
 2800 Lanika St.
 LaPorte, Mich.

I want items checked: _____ Design No: _____

4 sets of Building Plans & Specifications, with Material List \$29.75

1 set of Building Plans & Specifications, with Material List 7.75

Family Homes Plan Book, postpaid 3.00

Enclosed find \$..... for items checked.

NAME
 ADDRESS
 CITY STATE

Young Couples Study Furniture For Homes

DALLAS (UPI)—Every member of a group of young people who took part in a panel discussion of home furnishing and decorating at a regional furniture market here planned to start married life in an apartment.

At least 85 per cent of the panelists intended to start with a furnished apartment. And about 90 per cent thought their parents' homes were badly decorated and they could do better.

The panel, of six young men and 19 girls, was sponsored by the Kroehler (Furniture Manufacturers) Co., in Decorators' Center of the Dallas Market Center, while the white furniture market was underway.

The young people were college students, high school seniors and working people. 16-22 was the age range. Kroehler has held similar panels in Chicago.

Although most of the panelists expected to start married life in furnished apartments, they said they will start buying furniture of their own as soon as possible and change it in five to 10 years.

Furniture's Changed

"Whatever happened to that old idea that you bought furniture for a lifetime?" the furniture company's moderator asked.

"It's not made that well," one woman replied.

About 90 per cent wanted dining rooms in their future homes but 95 per cent planned to do only casual entertaining. In the Chicago panel; a larger percentage favored formal entertaining.

The Dallas panelists said they had learned what they knew about furniture and decorating from their mothers, magazines and the houses and apartments of friends.

Although none of the panelists indicated he was wealthy and most thought \$250 was a good price for a sofa, 60 per cent said they planned to buy their first furniture at the most expensive store in town.

"Planned Obsolescence"

One young man said he thought planned obsolescence was a part of modern furniture manufacturing. The moderator asked why they planned to buy furniture from a furniture store rather than a department store, because a furniture store had a larger selection.

"If someone gave you \$50 to spend on anything you wanted when you went on your honeymoon, how would you spend it?" the moderator asked.

Only one panelist said she would spend it on furniture.

Snug Harbor Appearance Featured

The exterior styling of the home design featured today presents a cozy "snug harbor" appearance mainly because of its close to the ground look.

Exterior construction of brick veneer has vertical siding in front and cantilever siding at the rear corner of the building for contrast and eye appeal. Ornamental wrought iron posts are a nice change from the usual wood posts seen on the average home.

Chin cabinet faces the dining area and separates front entry with its guest wrap closet from the spacious living-dining portion of the home.

Elimination of a fireplace reduces construction cost and provides additional wall area for variety in furniture placement. The large picture window overlooking planter plus high windows in dining area will provide plenty of light and ventilation.

"U" shape work center in the kitchen has suspended cabinets with "pass-thru" into sunny breakfast nook which will accommodate complete breakfast furniture. Pantry is a nice bonus item. Built-in oven and range with conveniently located storage cabinets complete the layout of this easy to work in food preparation center. Kitchen features sliding door access to service entrance and breakfast stairs.

Sleeping wing consists of three extra large bedrooms for a home this size. Closets are plenty and have sliding doors. Full bath has vanity. The linen closet has excellent location in that it is convenient to bedrooms and bath.

Be modern with MOEN

FAUCET WITH A FUTURE
 Saves Work...Time...Water

CARD
 Plumbing & Heating Co.
 4820 So. 6th 882-2288

TV Schedule

- 2 — KOTI
 5 — KTYM
 7 — KRCC
 10 — KMED
- SUNDAY**
- 7:30—(1) Living World
 8:00—(2) Lamp Oil My First
 8:30—(3) Faith For Today
 9:00—(4) Ball Hockey
 9:30—(5) Face The Nation
 10:00—(6) Faith For Today
 10:00—(7) Peter Potamus
 10:30—(8) Faith For Today
 10:30—(9) Benny and Cecil
 11:00—(10) Salt In Your Tears
 11:00—(11) Bullwinkle
 11:30—(12) Newswatch
 12:00—(13) Discovery
 12:00—(14) Bullwinkle
 12:00—(15) Bullwinkle
 12:00—(16) Bullwinkle
 12:00—(17) Bullwinkle
 12:00—(18) Bullwinkle
 12:00—(19) Bullwinkle
 12:00—(20) Bullwinkle
 12:00—(21) Bullwinkle
 12:00—(22) Bullwinkle
 12:00—(23) Bullwinkle
 12:00—(24) Bullwinkle
 12:00—(25) Bullwinkle
 12:00—(26) Bullwinkle
 12:00—(27) Bullwinkle
 12:00—(28) Bullwinkle
 12:00—(29) Bullwinkle
 12:00—(30) Bullwinkle
 12:00—(31) Bullwinkle
 12:00—(32) Bullwinkle
 12:00—(33) Bullwinkle
 12:00—(34) Bullwinkle
 12:00—(35) Bullwinkle
 12:00—(36) Bullwinkle
 12:00—(37) Bullwinkle
 12:00—(38) Bullwinkle
 12:00—(39) Bullwinkle
 12:00—(40) Bullwinkle
 12:00—(41) Bullwinkle
 12:00—(42) Bullwinkle
 12:00—(43) Bullwinkle
 12:00—(44) Bullwinkle
 12:00—(45) Bullwinkle
 12:00—(46) Bullwinkle
 12:00—(47) Bullwinkle
 12:00—(48) Bullwinkle
 12:00—(49) Bullwinkle
 12:00—(50) Bullwinkle
 12:00—(51) Bullwinkle
 12:00—(52) Bullwinkle
 12:00—(53) Bullwinkle
 12:00—(54) Bullwinkle
 12:00—(55) Bullwinkle
 12:00—(56) Bullwinkle
 12:00—(57) Bullwinkle
 12:00—(58) Bullwinkle
 12:00—(59) Bullwinkle
 12:00—(60) Bullwinkle
 12:00—(61) Bullwinkle
 12:00—(62) Bullwinkle
 12:00—(63) Bullwinkle
 12:00—(64) Bullwinkle
 12:00—(65) Bullwinkle
 12:00—(66) Bullwinkle
 12:00—(67) Bullwinkle
 12:00—(68) Bullwinkle
 12:00—(69) Bullwinkle
 12:00—(70) Bullwinkle
 12:00—(71) Bullwinkle
 12:00—(72) Bullwinkle
 12:00—(73) Bullwinkle
 12:00—(74) Bullwinkle
 12:00—(75) Bullwinkle
 12:00—(76) Bullwinkle
 12:00—(77) Bullwinkle
 12:00—(78) Bullwinkle
 12:00—(79) Bullwinkle
 12:00—(80) Bullwinkle
 12:00—(81) Bullwinkle
 12:00—(82) Bullwinkle
 12:00—(83) Bullwinkle
 12:00—(84) Bullwinkle
 12:00—(85) Bullwinkle
 12:00—(86) Bullwinkle
 12:00—(87) Bullwinkle
 12:00—(88) Bullwinkle
 12:00—(89) Bullwinkle
 12:00—(90) Bullwinkle
 12:00—(91) Bullwinkle
 12:00—(92) Bullwinkle
 12:00—(93) Bullwinkle
 12:00—(94) Bullwinkle
 12:00—(95) Bullwinkle
 12:00—(96) Bullwinkle
 12:00—(97) Bullwinkle
 12:00—(98) Bullwinkle
 12:00—(99) Bullwinkle
 12:00—(100) Bullwinkle

Streetcars Make Homes

SAN FRANCISCO (UPI)—Most persons have seen an old streetcar that was converted into a restaurant. But not very many have visited an entire suburb built from discarded streetcars, cable cars and horse-drawn buses.

San Francisco has its Carville on the outskirts of town at the turn of the century. The area was just sand dunes then and the city made it a graveyard for its outmoded vehicles.

One day someone with a strong need for shelter converted one of the streetcars into living quarters. Soon others followed. Curtains were put over windows and flowerboxes were added. A windmill was erected and the village had fresh water from under the dunes.

Carville has all but disappeared. But a sharp-eyed tourist can go out to the present Sunset District and among the neat rows of homes can see the streetcar shapes in a few of the houses.

WARSAW (UPI)—An outbreak of Asian-flu was reported in Warsaw and the port city of Gdansk. Press reports expressed fear of a nationwide epidemic.

BEEBE'S TV AND RADIO Service

Black & White, Color
 1820 Oregon Ave. Ph. TU 4-3232

DAY OR NIGHT SERVICE

Phone 884-4197
J. W. KERNS

TV Service

• Pick Up and Delivery.
 • All Makes, All Kinds
 Service up to 8 pm daily
 24 years of service to the Klamath Basin. Phone TU 4-3121

Deerby's Music

126 No. 7th
 4-3121 or 4-7241.

B & B RADIO & ELECTRIC

Complete Service
 TV's — Radios
 Record Players

316 So. 6th TU 2-4434
 Plenty of Free Parking

FEBRUARY SPECIAL \$400

Service Only
 Includes: Rejuvenation of picture tube, cleaning all controls and tuner, Trips to Merrill, Melin and Bonanza Turkeys.

Billy Golden
 Phone 882-1259

ACE TV

1140 Riverside Dr.
 Factory Authorized Service for PHILCO, GE, ZENITH Black & White or Color CALL 884-2581

ZENITH DEALER FOR THE FINEST TV-RADIO SERVICE!

NELSON'S TV

• Pocket-Ball TV & Radio
 • Channel Master
 • Transistor Radios

We Service All Makes of Radios and TVs!
 —DAY OR NIGHT!
 (Except Sunday)
 • All Work Guaranteed
 3005 State Way TU 2-3479

MONTGOMERY WARD

B & B RADIO & ELECTRIC

Complete Service
 TV's — Radios
 Record Players

316 So. 6th TU 2-4434
 Plenty of Free Parking

RADIO, HI-FI TV SERVICE

Part, dependable, satisfaction guaranteed!
 Let Words put new life in your soul. Save on Super Alpha replacement tubes. Parts available for most makes. Phone Ward.

SERVICE DEPARTMENT
 TU 4-3188 9th & Pine