

Herald and News

Features

HERALD AND NEWS, Klamath Falls, Ore.
Sunday, February 21, 1965

Features

Day At Legislature:

House, Senate Working Well Together; Committee Work Proves Very Important

By FLOYD L. WYNNE
Every resident of Oregon should visit the legislature at some time while it is in session. Impressions would no doubt vary greatly.

At first glance, you wonder how they get anything done. If you arrive before the formal sessions open, you find legislators in various stages of activity. Some sitting around opening their mail, others reading papers from home, still others studying on the problems of one bill or another. Others are somewhere else other than their desks.

It's an office type atmosphere with interested citizenry plying around and a scene of subdued but varied action.

The impression of a casual approach to legislation, however, is entirely erroneous.

On a recent trip to the legislature, our first of this session, we carefully analyzed the appearances of both houses throughout the day.

The old phrase that a good legislator "does his committee work" is tremendously apt. The work of the legislature at this stage, anyway, is strictly a committee affair.

A board posted at the entrance to each of the bodies, situated on opposite sides of the capitol, lists all the committee meetings. On early morning arrival, there are only a few listed, but by about 11 o'clock when the formal sessions open, the board is pretty full.

We attended two of these. The House Ways and Means Committee meeting chaired by Rep. George Filcraft, and a Senate Education hearing chair-

maned by Sen. Al Flegel of Rusburg.

The first committee met at 8 a.m. and recessed in time for the opening of the House session at 11 a.m. The Senate hearing opened at 1 p.m. and recessed at 3 p.m. for a session

It is here that the public is given an opportunity to be heard on any particular measure. Committee members have the opportunity to hold a particular bill up for examination and debate its merits.

Later, when the houses convene, the business affairs move rapidly. A clerk reads the measure to be voted on in a rapid-fire jargon that perhaps the members of the body can understand. At any rate, they all seem to know what it's about and cast their votes with conviction, either pro or con. Also, speakers grab convenient microphones to express their opinions on any measure.

Some are passed, some go back to committee, and some are defeated.

Those that go back to committee may stay there, in many cases.

It's an interesting sight and Speaker of the House Monte Montgomery and President of the Senate Harry Boivin wield the gavels wisely and well.

Both men reflect the polish of experienced campaigners. Both Boivin and Montgomery expressed deep satisfaction with the harmony that has prevailed at the current session. In the past, the House and Senate many times staged a verbal

shoot-out across the long capitol rotunda.

The cooperative spirit is pleasantly visible in the workings of committees.

It is more and more apparent that the election of Boivin as President of the Senate avoided a split along party lines and enabled both houses to proceed smoothly with the necessary business of proper legislation.

Most important issues facing the legislature appear to be re-districting for congressional areas, bills governing work-

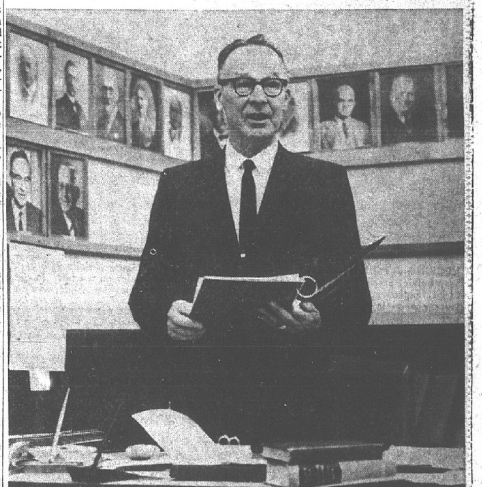
men's compensation and unemployment and the school re-districting measures.

Other than these, the sessions should proceed smoothly. Rep. Carrol Howe indicated that he wishes to study the school problem extremely well before it ever comes out of his education committee to the House floor. "We want to know exactly what effect the various provisions of the bill will have," he said. It was his feeling that some compromises would make the workman's compensation bill acceptable when it finally came up for a vote, and he was withholding judgment on the congressional re-districting.

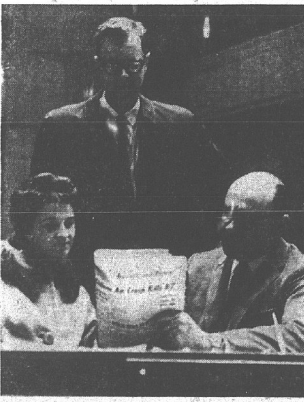
Purely a note of local pride

—there was a great deal of praise from a number of persons at the legislature on the caliber of the Klamath County delegation. One person commented, "You have power here all out of proportion."

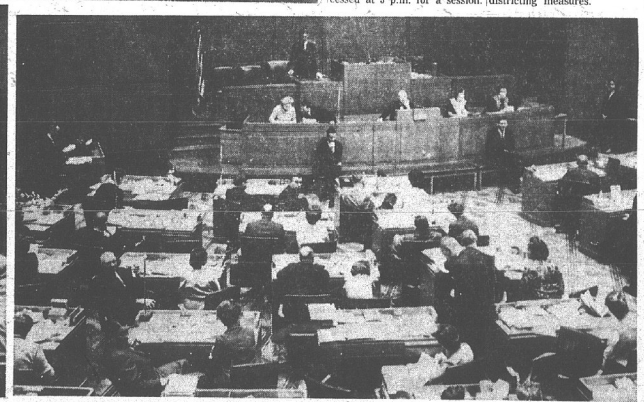
(Continued on Next Page)



SETS TONE OF HARMONY — Sen. Harry Boivin, Klamath Falls, president of the Senate, provides a harmonious note of compromise to the current session of the Legislature. He is shown here in his office, command post center of the Senate. Behind him can be seen photos of previous Senate presidents. Boivin's portrait is on the far left at bottom.



VISITORS FROM HOME — Rep. Carrol Howe, seated right, is visited by Mr. and Mrs. Leonard Jones of Carter-Jones Collection Service in regard to a bill being considered by the Legislature. Here, they discuss an item appearing in an edition of the Herald and News, another visitor for the legislators.



HOUSE IN SESSION — This overall view of a portion of the floor of the House of Representatives shows a virtually full slate on hand for the beginning of the formal session at 11 a.m. House Speaker Monte Montgomery can be seen in upper center. Klamath-Lake County Representative Carrol Howe can be seen in the second row from the front, second desk left from the center aisle. Representative George Filcraft occupies a backrow desk to the right of the aisle.



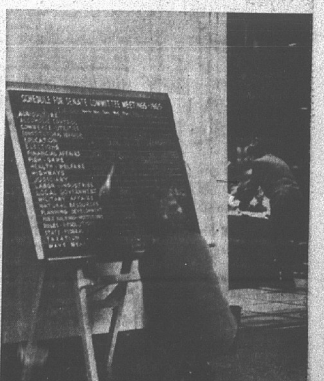
COMMITTEE HEARINGS — The work of the committees is vital to smooth operation of both bodies of the Legislature. It is here that both sides of any particular bill get an airing. Here, Representative George Filcraft is framed by two persons testifying at a subcommittee meeting of the House Ways and Means Committee of which Filcraft is a member.



HONORARY PAGES — A first-hand look at the Legislature in action is gained by those youths fortunate enough to be selected as honorary pages. Here, Steven Wynne, seventh grader at Roosevelt School, son of Mr. and Mrs. Floyd Wynne, is shown with Mrs. Harry Boivin outside the entrance to the Senate chambers. He served as honorary page of the Senate on a Monday and in the House on Tuesday. His impressions of being a page are carried on page two of this section. Alice Favell, daughter of Mr. and Mrs. Gene Favell was also an honorary page in the Senate on a Monday.



INTERESTED SPECTATORS — The galleries are well-used at both bodies of the Legislature during the formal sessions. Here, a group of students intently observe the actions of the Senate. This particular day was Don Schol-



CALENDAR OF ACTIVITY — Roadmap for committee work of both bodies of the Legislature is the blackboard outside the entranceways to both chambers. Here, each committee hearing is logged so legislators as well as visitors can attend those that most closely concern them. A secretary is busy logging new committee hearings.

