

**MONTGOMERY  
WARD**

# DIVIDEND

**soft cotton snap-side shirt  
adjusts as your baby grows**

**EASY-ON-AND-OFF SLEEVES FIT SMOOTHLY**

**54¢**

**"CHARGE IT"**

- Fine combed rib knit cotton
- Adjustable snap fasteners
- Flatlock seams add comfort
- In dust-free plastic pack

Mom, just snip the clearly marked blue thread on the expansion tape, and presto, Wards Tiny World white cotton snap shirt actually grows with your baby! Diaper pinning tapes are water-repellent. Washable. 3, 6, 12, 18 months.



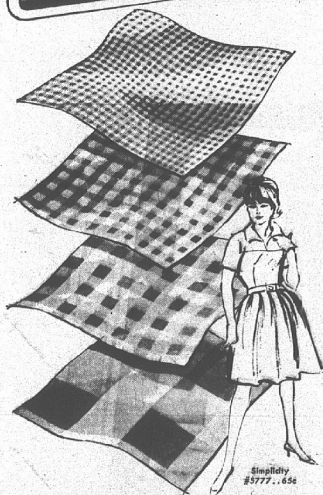
**GAUZE DIAPERS**  
Extra absorbent cotton machine washes, dries fast. Two layers that resist wrinkles. Reg. 2.79 **2.17**



**CRIB BLANKETS**  
88% rayon, 12% acrylic is soft, fluffy and washable. Deep binding on 4 sides. Pastels. Gift Boxed. Reg. 2.98 ..... **2.38**



**31 PRINT SHEETS**  
Sanforized® cotton for standard cribs. Snug, fitted corners. Gay, whimsical prints. .... **80¢**



**WASH-WEAR**  
COLOR-FAST GINGHAM CHECKS  
LOOK FASHION-FRESH ALWAYS

**48¢**  
REG. 69¢  
1/16, 1/8, 1/4 and 1" checks

You'll want to choose Wards combed cotton checks for all your Spring season sewing. They are so versatile in soft pastels, smart darks or vibrant colors. For dresses, skirts, blouses, home decorating. 36" wide.



**25% SAVINGS**  
CHOICE OF CAROL BRENT BRA  
OR LONG LEG PANTY GIRDLE

EACH **2.96**  
REGULARLY 3.99

New Adjustable Stretch Strap Bra for perfect fit. Nylon-Lycra® Spandex; Dacron® polyester lined undercups. A 32-36; B-C 32-40.  
Extra Long Leg Panty flattens tummy, trims thighs. Rayon-nylon-acetate-cotton with shape-making Lycra® Spandex. Sizes S, M, L, XL.

**dainty  
floral  
applique**

**CAROL BRENT DUSTER  
FOR CAREFREE LIVING**

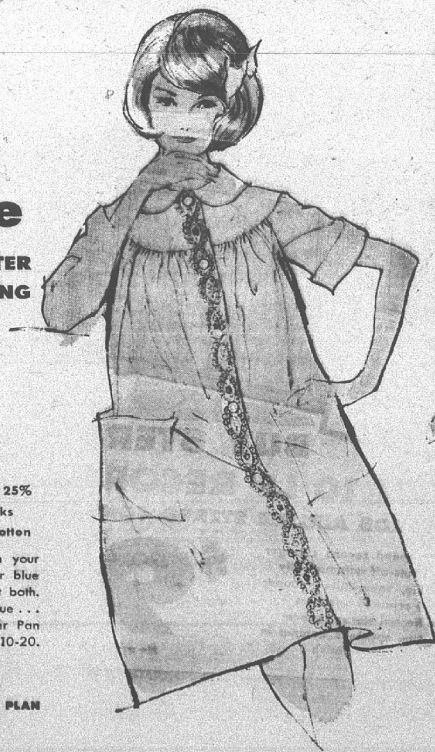
**\$3**

REGULARLY 3.99

- Priced at Wards now to save you 25%
- Styled for comfortable good looks
- Easy-care, machine washable cotton

Relax in picture-pretty fashion in your Carol Brent duster. Pastel pink or blue color choice is so right you'll want both. Each has multi-color schiffli applique... each has contrast piping on Peter Pan collar, sleeves and patch pockets. 10-20.

**"CHARGE IT" ON WARDS  
CONVENIENT CHARGE-ALL CREDIT PLAN**



**EASY CARE**  
SAVE 1/3 ON CAROL BRENT  
NYLON TRICOT SLIP, PETTI

**\$2**  
REGULARLY 2.99

Classic-style Slip of nylon tricot has dainty eyelet embroidered trim. Shadow paneled. White, in sizes 12 to 20.  
Satin Tricot Petti, truly luxurious—with an exquisite nylon lace trim. In white or black in proportioned lengths. Sizes S-M-L.