

Stable Thailand Fosters Friendly Relations With Feuding Neighbor Nations in Asian Area

BANGKOK, Thailand (UPI)—While the nations of Southeast Asia have been exchanging angry threats and bullets, stable Thailand has managed to maintain good relations with its feuding neighbors.

Thailand's relations are friendly with Laos, Burma, South Viet Nam, Malaysia and even Indonesia, which has threatened to "crush" Malaysia.

This Thailand is one of the Western World's great hopes in Southeast Asia. Thailand, the ancient kingdom of Siam, has outlawed communism and allied itself to the United States in the Southeast Asia Treaty

Organization (SEATO). Thailand is one of the few nations in the area which has managed to remain neutral. Thailand's relations are friendly with Laos, Burma, South Viet Nam, Malaysia and even Indonesia, which has threatened to "crush" Malaysia.

This Thailand is one of the Western World's great hopes in Southeast Asia. Thailand, the ancient kingdom of Siam, has outlawed communism and allied itself to the United States in the Southeast Asia Treaty

Thailand maintains constant trade with war-torn, Red-throated Laos. And Laos has received limited aid from Thailand which, with the United States, backs theodian central government of Prince Suvanna Phouma.

The greatest growth of friendship during the past year was in Malaysia. The two countries cooperated in a joint program to curb Chinese terrorists along their common border in the south, and Thailand tried with genuine interest to mediate the trouble between Indonesia and Malaysia.

Singapore, one of the states

in the Malaysian Federation, remained one of the most important markets for Thai rice. Thailand was one of the first countries to recognize Malaysia when the British-backed federation was formed in 1963 and the two countries swapped visas by their highest leaders last year.

Thailand is supplying medical and construction supplies and moral support to South Viet Nam to help in the war against the Communists there.

Thailand remained on good terms with President Sukarno's Indonesia, a major buyer of Thai rice, despite official regrets at Indonesia's withdrawal from the United Nations.

In her only real feud, Thailand accused Cambodia of carrying out barbaric acts of terrorism. Thailand tried with genuine interest to mediate the trouble between Indonesia and Malaysia.



FRIENDLY NEIGHBOR — Thailand occupies top position in war torn area as can be seen on above newmap. However, it is one of the Western world's greatest hopes in Southeast Asia for it enjoys good relations with almost all of its neighbors.

With 15 million television sets in operation, Japan ranks second only to the United States in television ownership, says the National Geographic.

Be modern with MOEN

NEW SHOWER HEAD For Bathing Luxury

JUST PUSH THE BUTTON TO CLEAN

FRIESEH-WELMAN CO.
1715 Main St. Ph. 882-6333

AMPEX STEREO TAPE RECORDERS

Automatic Reverse — Plays tape left to right, reverses automatically by then plays right to left — lets you play complete albums (both sides) without changing reels.

Automatic Threading — So simple, anyone can load and thread the famous Amplex in two seconds! No fumbling with take-up reels.

Automatic Shut-Off — When tape is finished playing, an automatic shut-off switch turns off the entire recorder — motor, amplifier, everything!

AMPEX Model 2070
\$199

AMPEX Model 1016 features:
• 5 1/2" Mid-Range Speaker
• Cross-over tone and treble
• 2000 CPS
• 8900 WGS-81 800 CPS

AMPEX 2000 SERIES SPEAKERS

For superb hi-fi reproduction...
• Extended Range Speaker
• 3" Tweeter
• Cross-over Network
• 2000 CPS
• 8900 WGS-81 800 CPS

LEO'S CAMERA SHOP
836 Main Ph. 23331

Federal Aviation Agency Considers Runway Arresting Gear For Airlines

WASHINGTON (UPI)—Some 2,000 feet from either end of the runway. A pilot would drop his belly hook if he wanted to abort a landing, says a FAA spokesman. The gear is similar to the device long used on aircraft carriers — a steel cable unreeled gradually in a powerful and relatively swift braking action.

In commercial use, the arresting gear would be located about 2,000 feet from either end of the runway. A pilot would drop his belly hook if he wanted to abort a landing, says a FAA spokesman. The gear is similar to the device long used on aircraft carriers — a steel cable unreeled gradually in a powerful and relatively swift braking action.

It works, but... There is no doubt that this gear is a major safety device. It would allow a pilot to abort a landing safely, even though they concede the efficiency of the arresting gear, doubt whether it really is warranted.

A recent study of jet accidents throughout the world since 1958 disclosed that an arresting gear actually would have saved lives in only one fatal crash.

That was the accident involving an Air France jet at Orly Field, Paris, June 13, 1963. The plane was on the runway when it ran into a taxiway, killing 120, including many prominent residents of Atlanta, Ga. Presumably, the pilot could have gotten an arresting gear which he realized the jet was not going to get off the ground.

But there have been about 30 other jet accidents, most of them fatal, which occurred under circumstances in which an arresting gear would have been as useless as a third wing jet operated by U.S. airlines to accommodate the hook device.

The cost factor leads to the question: Would it be all worth while in terms of lives and equipment saved? Many air safety experts, even though they concede the efficiency of the arresting gear, doubt whether it really is warranted.

Hundreds in the Pacific Northwest prefer Capp-Homes because...

No Other Home is so Easy to Own!

100% of OTHER PLANS OR USE YOUR OWN

capphomes
delivers and erects your home and furnishes:

EXTERIOR: Painted shingles or cedar lap siding and brick half-shingles.
INTERIOR: Stained or oiled, double insulation, impact cut flooring, vinyl tile, drop ceiling, kitchen and bathroom cabinets, and architectural masonry included.

THERE'S A CAPP-HOME NEAR YOU
Can we show it to you? We'll be glad to. A Capp-Home near you. A Capp-Home near you. A Capp-Home near you.

LOW COST, HONEST FINANCING... AT A FIRM PRICE

Make an appointment to see our Capp-Homes today by telephoning...
RAY MANHARTL
1000 S. W. 10th St.
N.W. Ste. B-104
Seattle, Wash. 98104

Big Garage Joins House Via 'Wing'

Instead of the typical "boxy" outline of a colonial, this house has a projecting wing for the garage. The garage is fitted with shutters and a window box to balance the picture window of the house. The wing of the house is carried across the front of the house to make a porch.

As with most colonials, this house has lots of living space. There are four bedrooms and two bathrooms. On the first floor there is a den, a separate dining room and an extra large kitchen.

This kitchen is one of the best features of the house. It is laid out in the efficient U-shaped plan and has a large window over the sink. Almost half of the kitchen area is devoted to a breakfast nook.

Side door off the kitchen is only a few steps from the garage service door. A lavatory is tucked into the kitchen den, which could serve as a guest room if needed. At the rear of the house, the den opens onto a terrace.

Entrance hall leads to all the main centers of the house, including the kitchen, dining room, den, living room and stairway. There is a large closet for guests' wraps.

Upstairs, the front bedroom is placed between two bedrooms, with a built-in vanity. Master bedroom has one of the largest closets possible to build in a home, about 100 feet long. There is a large closet in this room, too. A linen closet is also included.

The revised figures show that the building industry set a new sales record last year, topping the eight-year old record of \$43 billion wholesale, set in 1956.

COMFORT AIM OF BUILDERS

CROFTON, Md. (UPI)—Rising on a 1.28-acre site here between Baltimore and Washington is a scientifically planned community. The homes are built to "total comfort."

Standard equipment for each of the 2,000 medium-priced homes in the new town is a "one-package," furnace, central air conditioning system, power handiwork and electronic air cleaner.

The Crofton project, expected to be completed in about 1,000 town houses, a medical center, shopping center, and even a golf pro shop.

The complete heating-cooling demulchifying system in each of the medium-priced homes consists of a G.E. 120,000 BTU gas-fired furnace, a 2 1/2 or 3-ton central air conditioning unit providing 31,000 or 34,000 BTU cooling, a power atomizing-type humidifier and a 1-cell electronic air cleaner.

Owners of Crofton homes, which range in price from \$22,000 to \$28,000, are given a guarantee by the insulation manufacturer that if the heating bill goes over the guaranteed amount, the manufacturer pays 50 per cent of the additional cost.

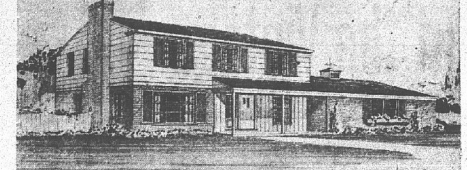
SHOP TODAY
9:00 A.M. TO 7:00 P.M.
AT MARKET BASKET NO. 2
SOUTH 6th & SHASTA WAY

Open Till Midnight Mon. thru Sat.

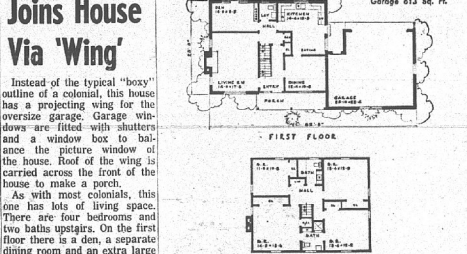
All Grocery Specials from last Thursday
of good thru Wednesday!

MARKET BASKET
9th & Pine So. 6th & Shasta Way

FAMILY HOMES



DESIGN 214
House, 1,500 Sq. Ft.
28,000 Cu. Ft.
Garage 432 Sq. Ft.



BUILDING PLANS • PLAN BOOKS • ORDER FORM
Herald and News Dept.
FAMILY HOMES
2900 Alpha St.,
Lansing, Mich.

I want items checked:
• 4 sets of Building Plans & Specifications, with Material List \$29.75
• 1 set of Building Plans & Specifications, with Material List 17.95
• Family Homes Plan Book, postpaid75
Enclosed find \$ for items checked.

NAME _____
ADDRESS _____
CITY _____ STATE _____

Satellite Still Orbits After 7 Years In Space

By JOSEPH L. MYLER
United Press International
WASHINGTON (UPI)— Tomorrow is the seventh birthday of the world's oldest satellite still in orbit.

The satellite is Explorer 1, an 18-pound spacecraft launched by the U.S. Army on Jan. 31, 1958.

Explorer 1 ceased transmitting information from space long ago, but will continue to keep circling the earth for years to come. In addition to its longevity, its great claims to fame are its radio messages.

It was the first satellite ever launched into orbit by the United States. Satellites placed in orbit around the sun, along with six pieces of U.S. space junk.

These probes include America's Mariner 4 spacecraft, destined to pass Mars on July 14, and Russia's Zond 2, a Mars craft which apparently lacks the radio transmitting power to make its mission successful.

Not all the voiceless satellites are scientifically useful. By photographing many of them and thus keeping watch on their orbits, scientists can deduce many vital facts about such things as the shape of the earth, the pressure of sunlight, and the effects of the "solar wind."

But most of the stuff up there is worthless debris. Conceivably, in the course of decades or centuries, it could build up into a serious problem for spacecraft trackers.

The time may well come when the number of man-made objects in orbit will exceed the number of stars visible to the naked eye. So it may some day be necessary to devise spacecraft specially built to rid the skies of this "space garbage" just as maritime nations now go about destroying derelict vessels which menace sea navigation.

It may be wondered why so much of the matter in orbit is junk. In one successful launch, pieces of scrap go into orbit along with the spacecraft. These consist of deliberately jettisoned devices which have served their turn, along with parts of rockets broken up by tumbling or other stresses at the time the payload was inserted in orbit.

For example, in two 1961 U.S. launches 24 metal pieces went into orbit along with the spacecraft. In October, 1963, a Soviet spacecraft broke into 24 separate pieces after it had achieved orbit.

To date, hundreds of such scraps have fallen out of orbit. More than 350 are still aloft.

Former hoster Jack Donohue, producer-director of "The Lucy Show," danced on Broadway in the "Ziegfeld Follies," "Good News" and "Follow Thru."

TV Schedule

1:00-2:00	Red Cross Nursing
2:00-2:30	Shy King
2:30-3:00	TV Question Box
3:00-3:30	Johnny Carson
3:30-4:00	Annals of the
4:00-4:30	Question Box
4:30-5:00	Annals of the
5:00-5:30	Annals of the
5:30-6:00	Annals of the
6:00-6:30	Annals of the
6:30-7:00	Annals of the
7:00-7:30	Annals of the
7:30-8:00	Annals of the
8:00-8:30	Annals of the
8:30-9:00	Annals of the
9:00-9:30	Annals of the
9:30-10:00	Annals of the
10:00-10:30	Annals of the
10:30-11:00	Annals of the
11:00-11:30	Annals of the
11:30-12:00	Annals of the

BEER'S TV and Radio, Color Black & White, Color

1929 Oregon Ave. Ph. TU 2-6252

TV Service

• Pick Up and Delivery
• All Makes, All Kinds
Service up to 8 pm daily
24 years of service to the Klamath Basin, Phone TV

Derby's Music

126 N. 7th
4-5121 or 4-7241.

NELSON'S TV

• Packard-Bell TV & Radio
• Channel Master
• Remote Radios

We Service All Makes of Radios and TVs
— DAY OR NIGHT!
(Except Sunday)
• All Work Guaranteed
3005 Shasta Way TU 2-3479

B & B RADIO & ELECTRIC

Complete Service on
TV's — Radios
Record Players

316 S. 6th TU 2-4434
Plenty of Free Parking

ACE TV

1140 Riverside Dr.
Factory Authorized Service for
PHILCO, G.E., ZENITH
Black & White or Color
CALL 884-3581

LBj Seeks House Unit in Cabinet

WASHINGTON (UPI)—President Johnson once more is asking Congress to set up a new cabinet level department of housing and urban development.

In his state of the union message, Johnson is asking for "improving the quality of American life."

The federal government's many programs of mortgage insurance, public housing, urban renewal, community facilities, and mass transit already are drawn together in the Housing and Home Finance Agency. But Johnson feels these programs could get a boost if he had a spokesman in the cabinet.

Further reorganization of the executive branch might bring in other programs intended primarily for cities but now being performed elsewhere in government.

COMPARE OUR RATES EXPERT TV SERVICE

COLOR — BLACK & WHITE
No Extra Charge For:
• Cleaning all controls, tuner and picture tube.
• Evening and Sunday Calls, daily trips 15 mile radius of Klamath Falls.

BILLY GOLDEN TV 882-1259
Merrill, Malin, Bonanza - Thursdays