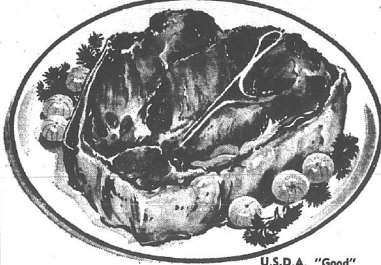


SAVE AT LOW COST SAVE AT LOW COST SAVE AT LOW COST SAVE AT LOW COST SAVE AT LOW COST SAVE AT LOW COST SAVE AT LOW COST



U.S.D.A. "Good" Grade Tender

**Chuck Steaks** 49<sup>c</sup> lb.

Swift's Spiced

**Luncheon Meat** 39<sup>c</sup> lb.

Boneless Top

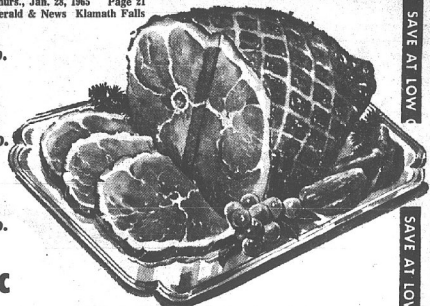
**Sirloin Steak** 98<sup>c</sup> lb.

U.S.D.A. "Good"

Swift's Country

**Sausage** 37<sup>c</sup>

1-lb. Pkg.



OREGON CHIEF OLD FASHIONED SMOKED SHANK PORTION

**HAM** 43<sup>c</sup> lb.

BUTT PORTION 49<sup>c</sup> lb.

HAM ROAST 69<sup>c</sup> lb.

CENTER SLICES 79<sup>c</sup> lb.

**POT ROASTS**  
Round Bone Boneless

Blade Cut

**38<sup>c</sup>** lb.

53<sup>c</sup> lb.  
63<sup>c</sup> lb.

SAVE • SAVE  
**SWISS CHEESE** 69<sup>c</sup> lb.

SAVE • SAVE  
**OYSTERS** 56<sup>c</sup> 12-oz.

SAVE • SAVE  
**BACON** 53<sup>c</sup> lb. Willow Slab

SAVE • SAVE  
**BEEF PACK** 9<sup>95</sup>

SAVE AT LOW COST SAVE AT LOW COST SAVE AT LOW COST SAVE AT LOW COST SAVE AT LOW COST SAVE AT LOW COST SAVE AT LOW COST

U and I **SUGAR**  
1st 10-lb. Bag **87<sup>c</sup>**  
Additional Bags  
Reg. Price

Pillsbury **CAKE MIXES**  
**4<sup>F</sup> 1<sup>00</sup>**

Cottage **MILK**  
Tall Tins **9<sup>F</sup> 1<sup>00</sup>**

Hills Bros. **COFFEE**  
2-lb. Tins  
1st 2-lb. Tin **1<sup>29</sup>**  
Additional at Reg. Price

**Tomato Sauce**  
**Lumberjack Syrup**

Buffet Tins Premium Brand

**6<sup>F</sup> 29<sup>c</sup>**  
21-oz. **3<sup>F</sup> 1<sup>00</sup>**

LOWEST PRICES IN TOWN ON ...  
U&I Powdered or Brown **SUGAR** ??  
Delrich **MARGARINE** ??

Krusteaze Buttermilk **Pancake Mix** Reg. 75c 3 1/2-lb. **59<sup>c</sup>**

Krusteaze Buckwheat **Pancake Mix** 2-lb. Box Reg. 59c **49<sup>c</sup>**

Low Cost Old Fashioned **Peanut Butter** 17-oz. **49<sup>c</sup>**

**Frozen Dinners**

Banquet Ravioli, Italian, Franks & Beans, Macaroni & Cheese **3<sup>F</sup> 1<sup>00</sup>**

Lindsay Select Pitted **Ripe Olives** No. 1 Tall Tin **4<sup>F</sup> 1<sup>00</sup>**

**POST CEREALS**  
9-oz. Sugar Crisps  
12-oz. Toasties  
8-oz. Alpha Bits  
8-oz. Crispy Critters  
**3<sup>F</sup> 89<sup>c</sup>**

Columbia Pickles **CUCUMBER SLICES** 48-oz. **69<sup>c</sup>**

Gebhardt's **Tamales** 2 1/2 tins **3<sup>F</sup> 1<sup>00</sup>**

IXL **Chili Con Carne** With Beans 40-oz. **49<sup>c</sup>**  
**Bif Luncheon Meat** 12-oz. Tins **3<sup>F</sup> 1<sup>00</sup>**

Cottage Short Cut **GREEN BEANS** 1st 6 303 tins **10<sup>c</sup>** ea.  
Cottage **APPLE SAUCE** 1st 6 303 tins **10<sup>c</sup>** ea.

U.S. No. 1 **POTATOES** 10-lb. Bag **79<sup>c</sup>**  
**Grapefruit** Pink or White **10<sup>F</sup> 98<sup>c</sup>**

Rippon Good Ass. **Sandwich Cookies** 2-lb. Bag **59<sup>c</sup>**

Instant Orange Drink **TANG** Big 18-oz. Size **79<sup>c</sup>**

**ORANGES** Sweet Navels **10<sup>c</sup> lb.**  
**CAULIFLOWER** Snow White Heads **19<sup>c</sup> ea.**  
**CUCUMBERS** Fancy Slicers **2<sup>F</sup> 19<sup>c</sup>**

**Low Cost market**  
OUR SPECIALS START THURSDAY MORNING  
TOWN & COUNTRY SHOPPING CENTER