

BEAUTIFUL PINEAPPLE PATIO SANDWICHES

A Dream Recipe For Summer

Sandwiches take on a new look when they are open faced and glazed. These pineapple crowned sandwiches were designed for luncheon in elegance on the patio. Although you cater them yourself, their finished appearance has a professional look that is delightful to behold. A golden slice of canned pineapple adorns each top before they are finished with a glossy lemon wine gelatin glaze.

Round bread slices are the basis for these beautiful party sandwiches. Spread with mayonnaise, then with savory ham salad for heartiness before stacking the pineapple on top. If the day is warm refrigerate the sandwiches to set the glaze. This topping keeps them fresh and moist. When guests arrive add the potato chips and olives and lunch is ready to be served.

- PINEAPPLE CROWN SANDWICHES, REGAL**
- 1 (3-ounce) package lemon gelatin
 - 1/2 cup boiling water
 - 1 (1-pound 14-ounce) can pineapple slices
 - 1/4 cup dry sherry
 - 2 tablespoons strained lemon juice
 - Ham Filling
 - 8 round slices bread
 - Mayonnaise
 - Ripe olives and potato chips for garnish

WATERING REMINDER

For healthy house plants, water from the top at least once a week to wash down harmful salt accumulations through the bottom and porous walls of the clay pots, so no excessive amounts of these salts will remain within the soil ball to weaken or kill your plants.

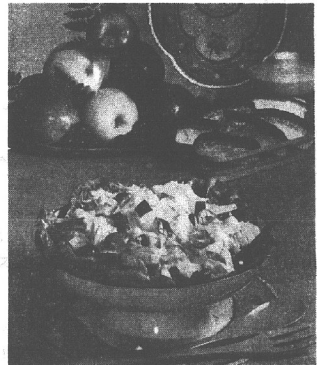
Cover with an even layer of slowly over each sandwich with slice on top of each. Arrange sandwiches on wire rack with waxed paper underneath. When gelatin begins to thicken, spoon into tins. Makes 8 sandwiches.

Ham Filling: Blend together 1/2 cup finely chopped celery, 1/4 cup finely chopped green onion, 1 1/2 teaspoons dry mustard, and 1/4 cup mayonnaise.

Specialties in Gourmet

By RUTH KING

HERALD AND NEWS, Klamath Falls, Oregon Thursday, January 28, 1965 PAGE 17



ESPECIALLY GOOD—Chicken combines well with fruits. Try Apple-Chicken Salad... two cups diced unpeeled red apple, two cups diced cooked or canned chicken, one cup drained canned pineapple tidbits, one cup halved, seeded toky grapes. Combine and mix with enough mayonnaise to hold together, chill and serve on lettuce leaves.

BATHROOM COLOR

While gay splashes of bright colors are becoming increasingly popular throughout the home, there is still a need for soft pastels. In the bathroom, for example, soft pastels are always in good taste. Pink and gray ceramic tile continue to be among the most popular bathroom colors, says the Tile Council of America. Small bathrooms should use light colored ceramic tile, and no matter what the size of the room, never use more than three colors, the Tile Council advises.

Of the non-foam type of pillow down is the most luxurious, with goose feathers a close second.

FLAVOR'S HERE

In special flavor-saver cans!

SWEET 'N GOOD

WEATHER BULLETIN!

COMING-A WINTER HEAT WAVE IN YOUR HOME!

the exciting new **SIEGLER GAS HOME HEATER**

PUSH BUTTON CONTROLS! Just push a button and this Siegler obeys your command—automatically!

now gives you amazing **SWEEPING SUPER HEAT**

The golden louvers in the floor heat outlet are motor driven to rotate back and forth—sweeping the heat over the floor. All new in performance, styling and exciting color, this new SIEGLER gives you a new dimension in heating comfort. See it soon!

Klamath Gas

205 Riverside Dr. In Tulelake, NORCAL GAS

Ph. 882-2541 Ph. 667-2697

Just in **BRAND NEW 1965 ZENITH**

23" **LO-BOY CONSOLE**

ALL 82-CHANNEL TV

The BURGUNDY • Model M2733 U Beautiful Contemporary styled lo-boy console in grained Walnut color or grained Mahogany color. Vivid Spotlite Dial. Built as only Zenith would build it!

HANDCRAFTED CHASSIS

NO PRINTED CIRCUITS...

Every chassis connection in Zenith TV is handcrafted for the utmost in dependability.

ZENITH QUALITY PERFORMANCE FEATURES

- Zenith's New Custom Video Range 82-Channel Tuning System
- 21,000 Volts Picture Power
- Big 6 1/2" x 2 1/4" Speaker
- Automatic "Fringe-Lock" Circuit
- Peak Picture Control
- Zenith "Fin Cooled" Power Transformer

You Can Buy A Zenith Color TV Set For As Little As \$15 Monthly

Special! Rebuilt Black & White 21" PICTURE TUBES \$30

J.W. KERNS

734 So. 6th Phone 884-4197

JANUARY WHITE TAG

COFFEE Maxwell House 2 lb. Tin **1.35**

BEER 79¢ 6 PACK FISHER by Lucky 11 oz. Bottles

DOG FOOD 2.69 Friskies - Cube or Meal 25-lb. BAG

INSTANT Big, 6-oz. Jar **95¢**

Quality MEATS

1-LB. TINS **HERSHEY CHOCOLATE SYRUP** 2 For 39¢

Alber's Pancake **Flour** 4 lb. bag **39¢**

TIDE 59¢ GIANT PACKAGE

NALLEY'S - No. 1 Tall CHILI CON CARNE 4 Cans **99¢**

Mild OR Hot

Ex. Fancy Washington Red Delicious **APPLES** 4-lb. bag **49¢**

New Solid Crisp **CABBAGE** lb. **7¢**

Sweet - Juicy **ORANGES** 5 lb. **49¢**

New Red **POTATOES** 5 lb. **49¢**

M.D. **Napkins** White, Colors 60 Count **10¢** Pkg.

DiUllo's ALL-GUERNEY MILK GAL **79¢** JUG

KLAMATH 100% FRESH EGGS 29¢ ONE DOZEN EGGS Grade 'AA' Small D O Z.

We're having a JANUARY WHITE TAG SALE this month at BUY LOW. All items bearing a special white tag are marked down, down, down! Here's your opportunity of the new year to save on your family's favorite foods.

COFFEE Maxwell House 2 lb. Tin **1.35**

INSTANT Big, 6-oz. Jar **95¢**

Quality MEATS

FRESH PORK BOSTON BUTTS ROLLED or STEAKS **Roast** lb. **49¢**

Whole-Shoulder Butt lb. **39¢**

Bockwurst SAUSAGE Sure Sign of Spring **BUY NOW**

USDA 'Good' Beef **RIB STEAKS** lb. **69¢**

USDA 'Good' Beef **CHUCK ROASTS** lb. **43¢**

Pork 'n Beans Van Camp's Giant 52 oz. Tins **3:51**

Pie Cherries Dundee, Sour Pitted, No. 303 Tins **2:45¢**

Peaches Hunt's - Sliced or Halves No. 2 1/2 Tins **4:98¢**

Pineapple Juice Dundee - 46-oz. Tins **29¢**

Peas Hudson House Fancy, Small, No. 303 Tins **6:51**

Corn CREAM OR W. KERNEL Extra fancy! Hudson House, Quality Guaranteed, No. 303 Tins **6:51**

Asparagus LIBBY'S All Green No. 300 Tall SPEARS **3:100**

Prunes SWEET DATE SUNRAY 2 LB. BAG **39¢**

Sunbeam - 1/2 White, 1/2 Wheat or All White 12 in. Pkg. **35¢**

Brown & Serve Rolls or Fruit Gelatin **JELLO** All Flavors **2:19¢**

Puddings Lady Hudson 2 lbs. **39¢**

Margarine Lady Hudson 2 lbs. **39¢**

BUY LOW

FOOD CENTER

GROCERIES • VARIETY • POST OFFICE

1338 OREGON